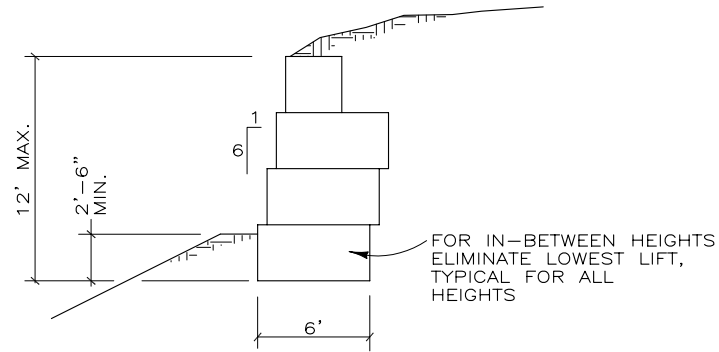
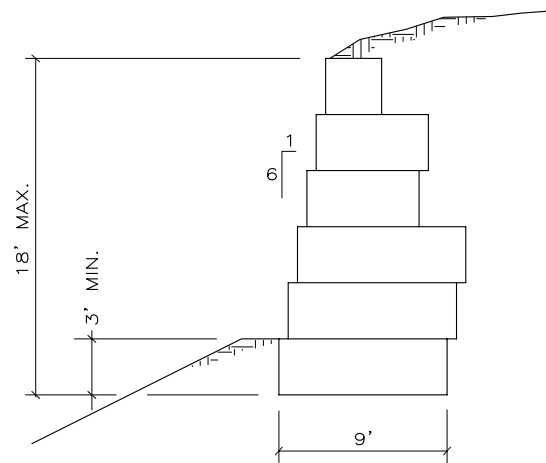


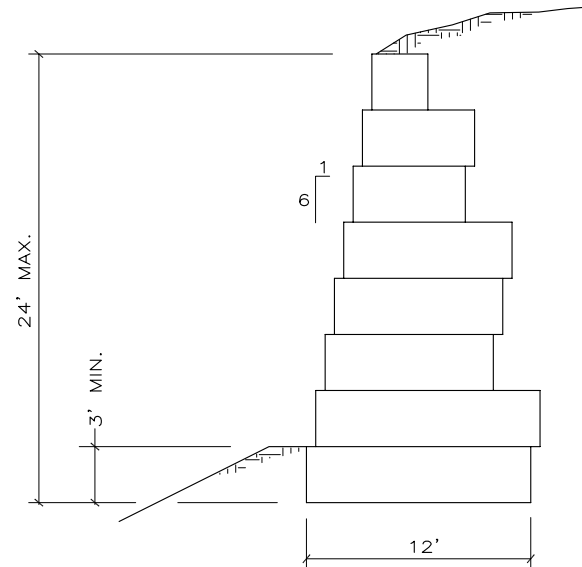
TYPE 1



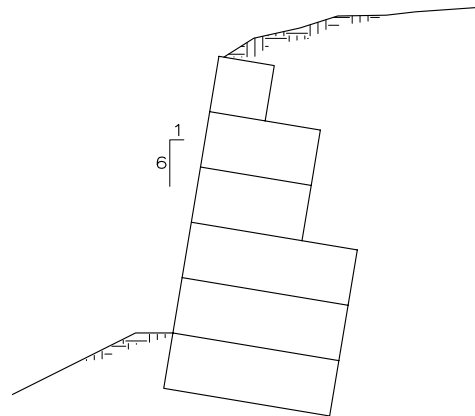
TYPE 2



TYPE 3



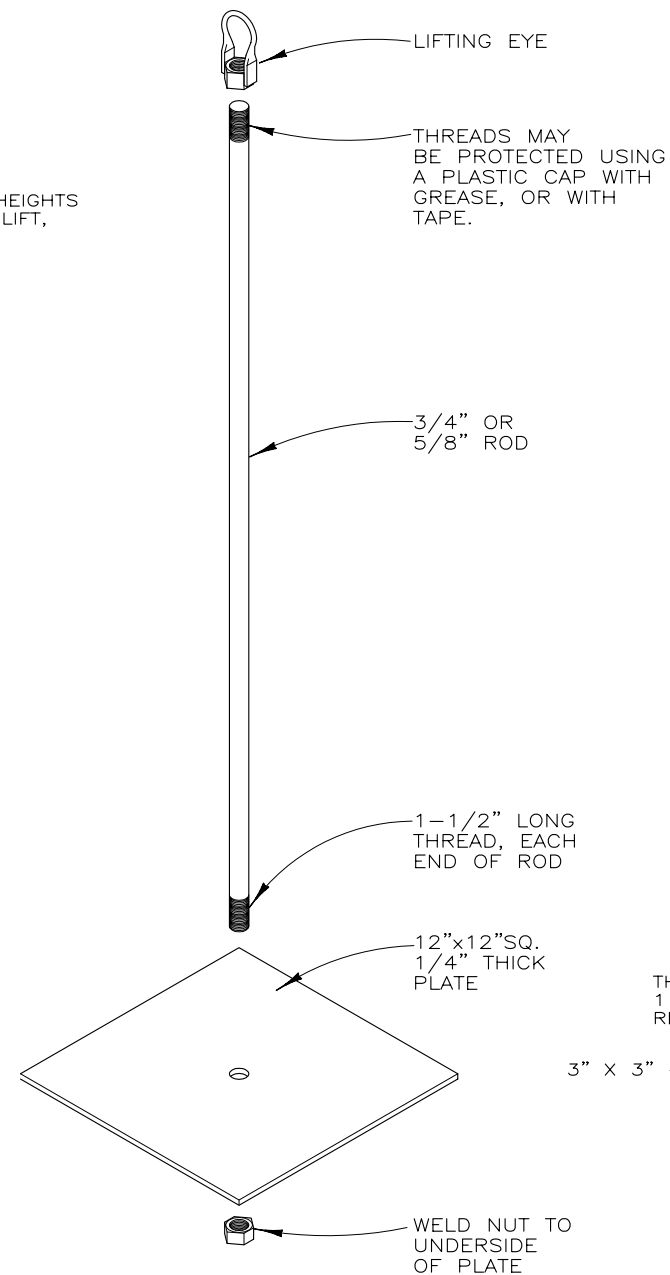
TYPE 4



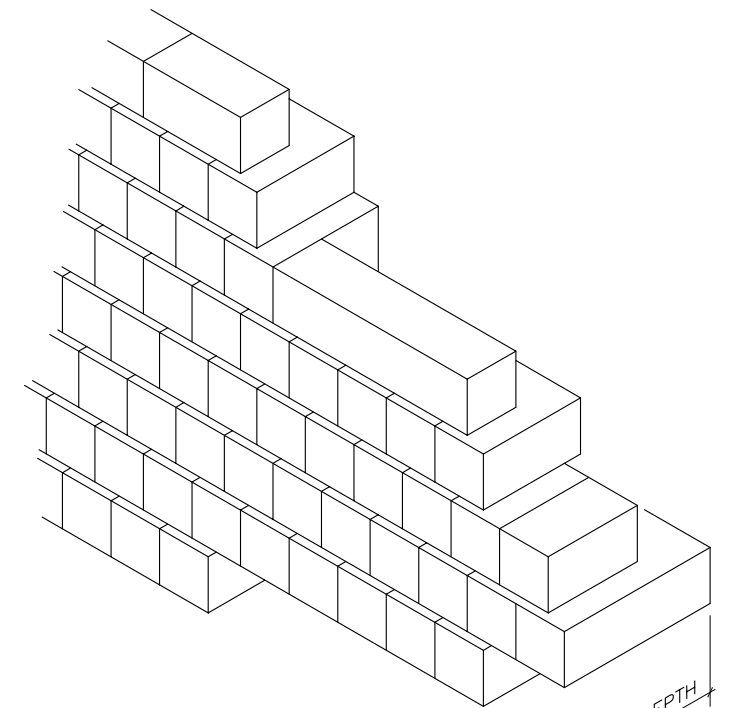
ALTERNATE BATTER

**MATERIALS:**

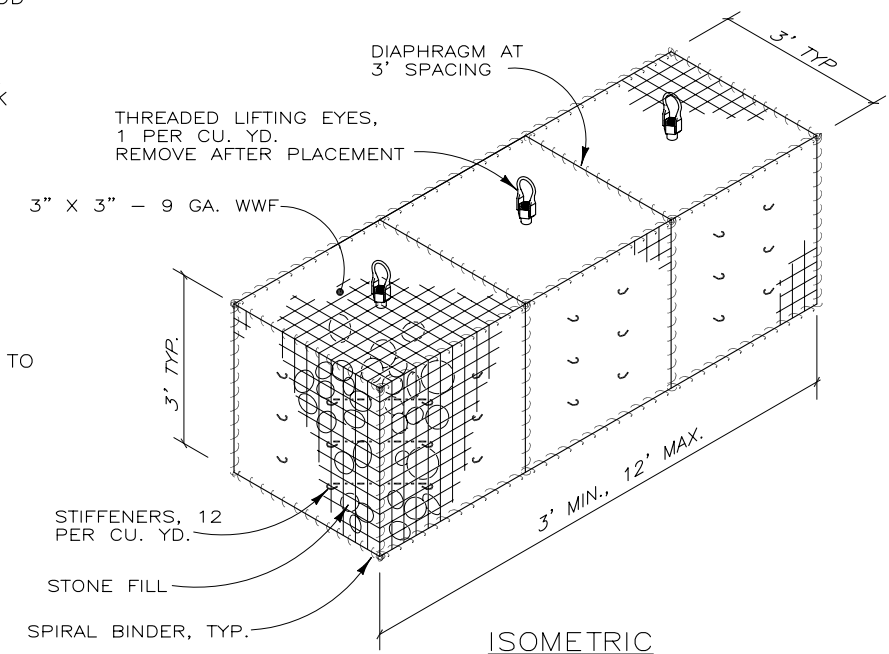
- SIDES AND DIAPHRAGMS:  
3" X 3" - 9GA. WELDED WIRE FABRIC
- SPIRAL BINDERS AND STIFFENERS:  
9 GA. WIRE
- ALL WWF AND WIRE GALVANIZED 0.8 OZ./SQ. FT.
- WIRE AND GALVANIZING PER ASTM A-185 AND ASTM A-123
- STONE FILLING SHALL VARY IN SIZE IN GREATEST DIMENSION FROM 3 1/2" MINIMUM TO 12" MAXIMUM.



STONECRIB LIFTING DEVICE



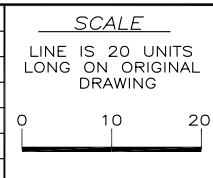
TYPICAL END SECTION



ISOMETRIC

THIS DRAWING IS FURNISHED SOLELY FOR THE USE OF OR IN CONNECTION WITH THIS PROJECT, AND THE PROPRIETARY INFORMATION SHOWN HEREON IS NOT TO BE TRANSMITTED TO ANY OTHER ORGANIZATION WITHOUT SPECIFIC AUTHORIZATION BY THE HILFIKER COMPANY. HILFIKER RETAINING WALLS ARE PROTECTED BY ONE OR MORE OF THE FOLLOWING PATENTS: 243,613, 243,697, 288,616, 4,117,686, 4,329,089, 4,324,508, 4,391,557, 4,505,621, 4,643,618, 4,661,023, 4,856,939, 5,076,735, 5,647,695, 5,722,799, 6,357,870 AND OTHERS. OTHER PATENTS PENDING (2004)

REV. NO.	DATE	BY	DESCRIPTION
1	08/20/98	DR	UPDATE, MINOR REVISIONS
2	08/06/99	DR	UPDATED BORDER



PROJ. MGR.	
ENGINEER	
CADD BY	DR

**HILFIKER RETAINING WALLS**  
 3900 Broadway Eureka, CA 95503  
 P.O. Box 2012 Eureka, CA 95501  
 707-443-5093 Fax 707-443-2891  
 Toll-Free 800-762-8962  
 Web: <http://hilfiker.com> email: [info@hilfiker.com](mailto:info@hilfiker.com)

DWG DATE	7 OCT 92
REVISION DATE	6 AUG 99
SCALE	NOTED

STANDARD DRAWING
STONE CRIB RETAINING WALL
DETAILS

PROJECT NO.	
SHEET	1
OF	1