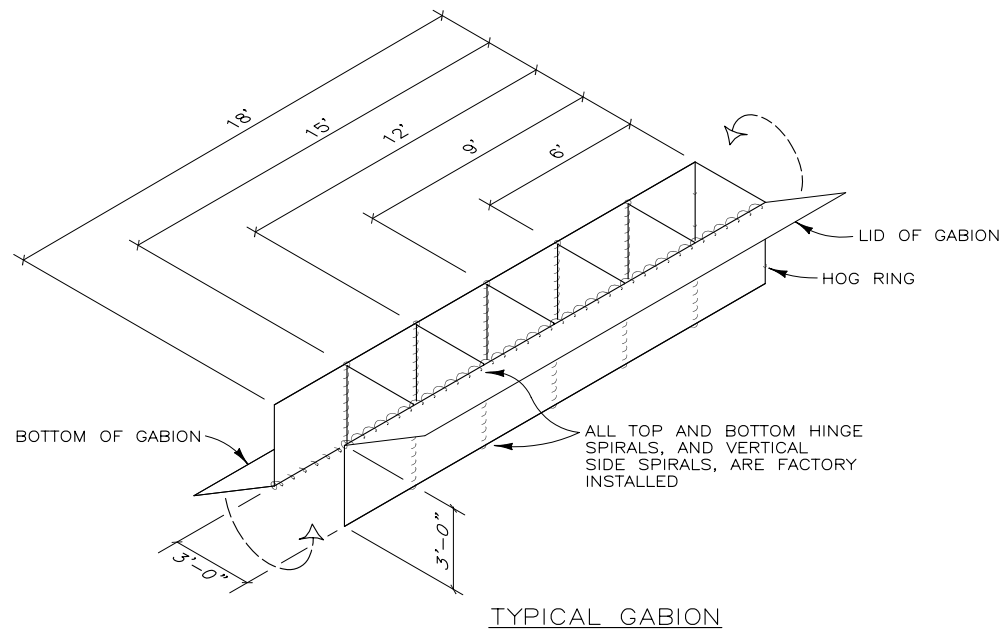
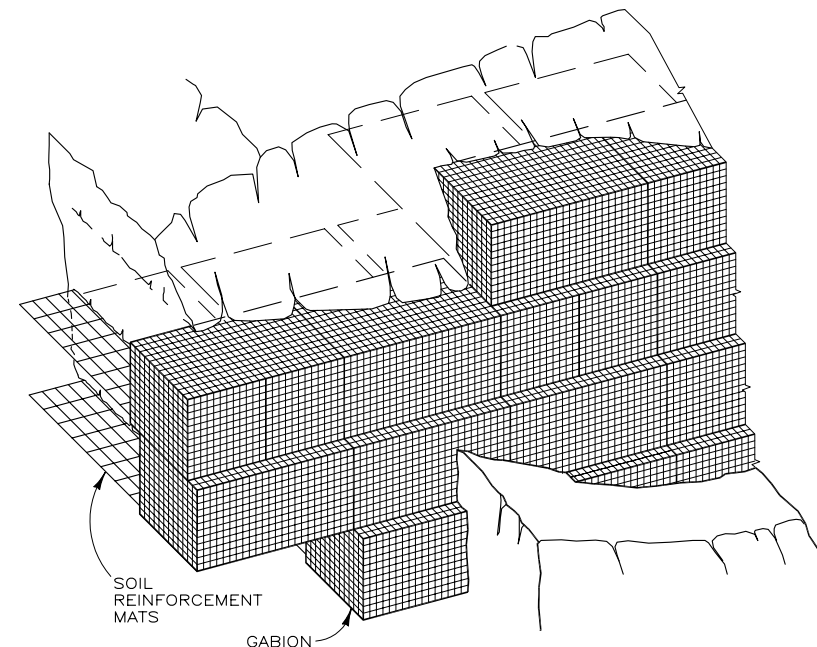


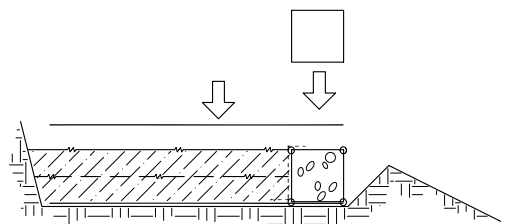
- STEP 1. PLACE SOIL REINFORCEMENT MATS ON PREPARED FOUNDATION.
2. PLACE THE FIRST LIFT OF GABIONS AND PERMANENTLY CONNECT THE FRONT EDGES TO THE SOIL REINFORCEMENT MATS WITH SPIRAL BINDERS.
3. INSTALL FILTER FABRIC, IF REQUIRED.
4. PLACE AND COMPACT THE FIRST COURSE OF BACKFILL ON THE SOIL REINFORCEMENT MATS. BACKFILL TO BE OF SUFFICIENT DEPTH TO PROTECT SOIL REINFORCEMENT MATS FROM DAMAGE OR MOVEMENT BY EQUIPMENT DURING DELIVERY OF ROCK TO THE GABIONS.
5. FILL THE GABIONS WITH SUITABLE ROCK.
6. CLOSE LID AND SECURE WITH SPIRAL BINDERS.



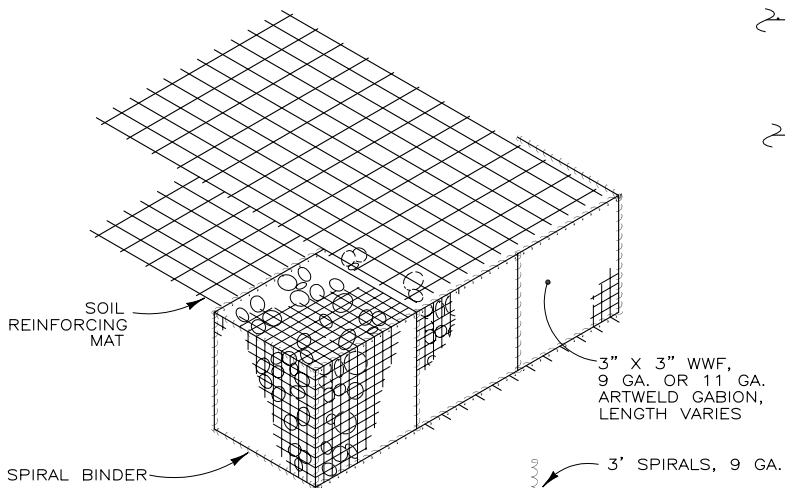
TYPICAL GABION



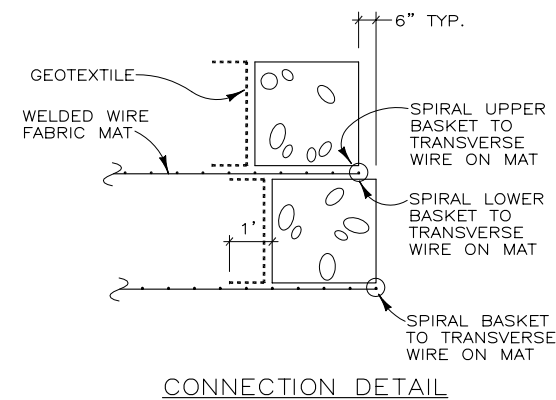
PICTORIAL ELEVATION



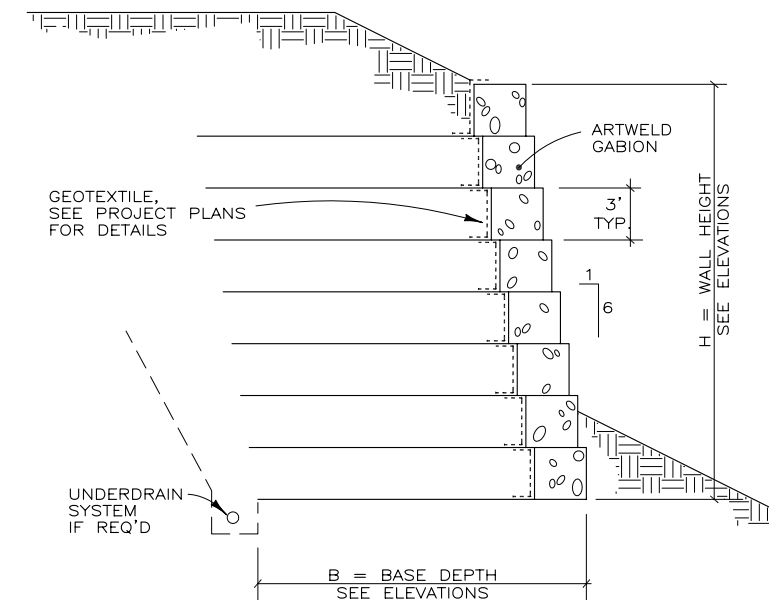
- STEP 7. PLACE AND COMPACT THE REMAINING BACKFILL IN UNIFORM LIFTS OVER THE SOIL REINFORCING MAT.
8. PLACE SOIL REINFORCEMENT MATS ON THE BACK-FILL AND THE TOP OF THE GABION.
9. PLACE THE SECOND LIFT OF GABIONS OVER THE FIRST LIFT AND CONNECT THE GABIONS AND THE SOIL REINFORCEMENT MATS TOGETHER PERMANENTLY AS IN STEP 2, WITH SPIRAL BINDERS.
10. PLACE AND COMPACT BACKFILL AT THE TOE OF THE WALL PER YOUR PROJECT PLANS.



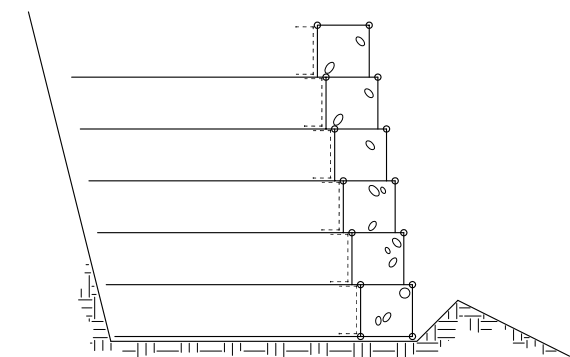
ISOMETRIC OF WALL COMPONENTS



CONNECTION DETAIL



TYPICAL SECTION



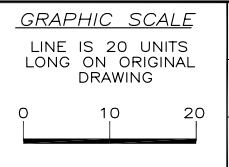
- STEP 11. CONTINUE STEPS 3 THRU 8 TO THE TOP LIFT OF GABIONS.
12. PLACE THE FINAL LIFT OF BACKFILL PER YOUR PROJECT PLANS.

CONSTRUCTION SEQUENCE

GABFACE.DWG

THIS DRAWING IS FURNISHED SOLELY FOR THE USE OF OR IN CONNECTION WITH THIS PROJECT, AND THE PROPRIETARY INFORMATION SHOWN HEREON IS NOT TO BE TRANSMITTED TO ANY OTHER ORGANIZATION WITHOUT SPECIFIC AUTHORIZATION BY THE HILFIKER COMPANY. HILFIKER RETAINING WALLS ARE PROTECTED BY ONE OR MORE OF THE FOLLOWING PATENTS: 243,613, 243,697, 288,616, 4,117,686, 4,329,089, 4,324,508, 4,391,557, 4,505,621, 4,643,618, 4,661,023, 4,856,959, 5,076,735, 5,647,695, 5,722,799, 6,357,970 AND OTHERS. OTHER PATENTS PENDING (2004)

REV. NO.	DATE	BY	DESCRIPTION
1	9/24/98	DR	MINOR REVISIONS
2	4/12/02	DR	UPDATE BORDER



PROJ. MGR.
ENGINEER
CADD BY
DR

HILFIKER RETAINING WALLS
3900 Broadway Eureka, CA 95503
P.O. Box 2012 Eureka, CA 95501
707-443-5093 Fax 707-443-2891
Toll-Free 800-762-8962
Web: <http://hilfiker.com> email: info@hilfiker.com



DWG DATE
8 APRIL 93
REVISION DATE
12 APR 02
SCALE
NOTED

STANDARD DRAWING	PROJECT NO.
ArtWeld GABION FACED M.S.E. WALL	SHEET 1 OF 1
SECTION AND DETAILS	