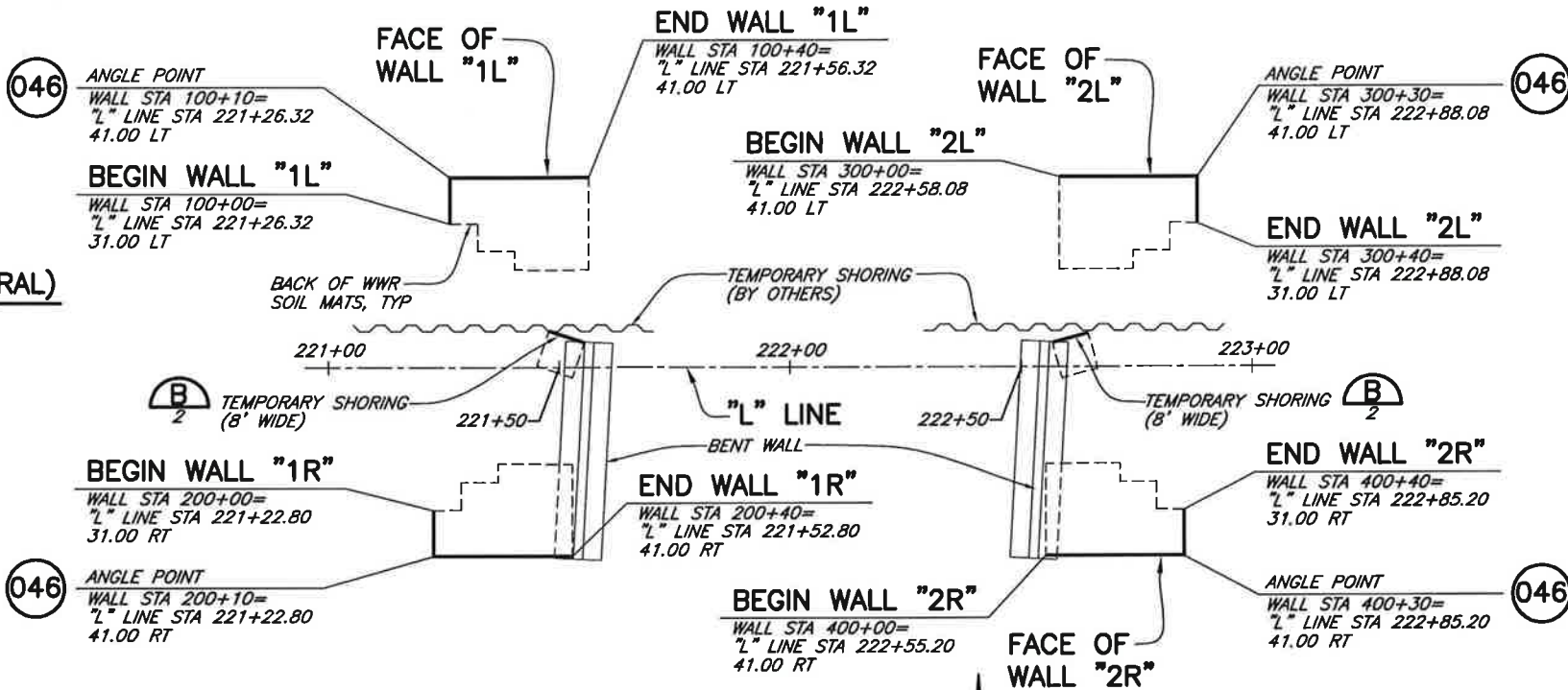


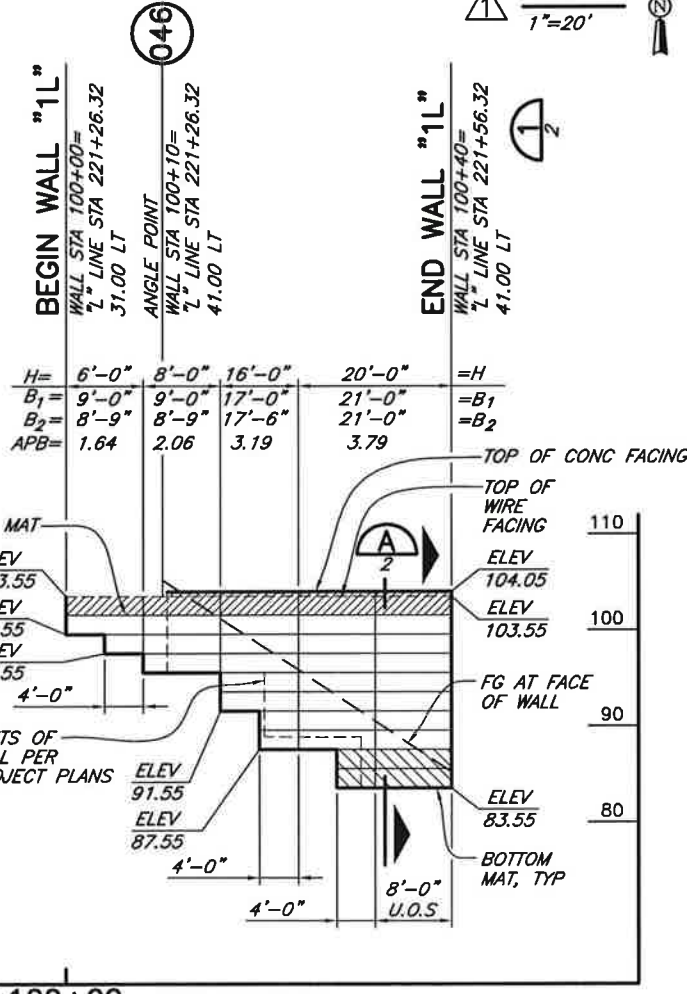
CAD: \\ZING\PROJECTS\2011\011002\010-I-84-HOOD-RIVER-DWGS\011002-010-HOOD-RIVER-R2.DWG
(HRW 091002 BE)

"L" LINE (SPIRAL)

TS= STA 217+77.77
 $\Theta = 4' 59' 09''$
 LS= 1000.00'
 LT= 666.93'
 ST= 333.57'

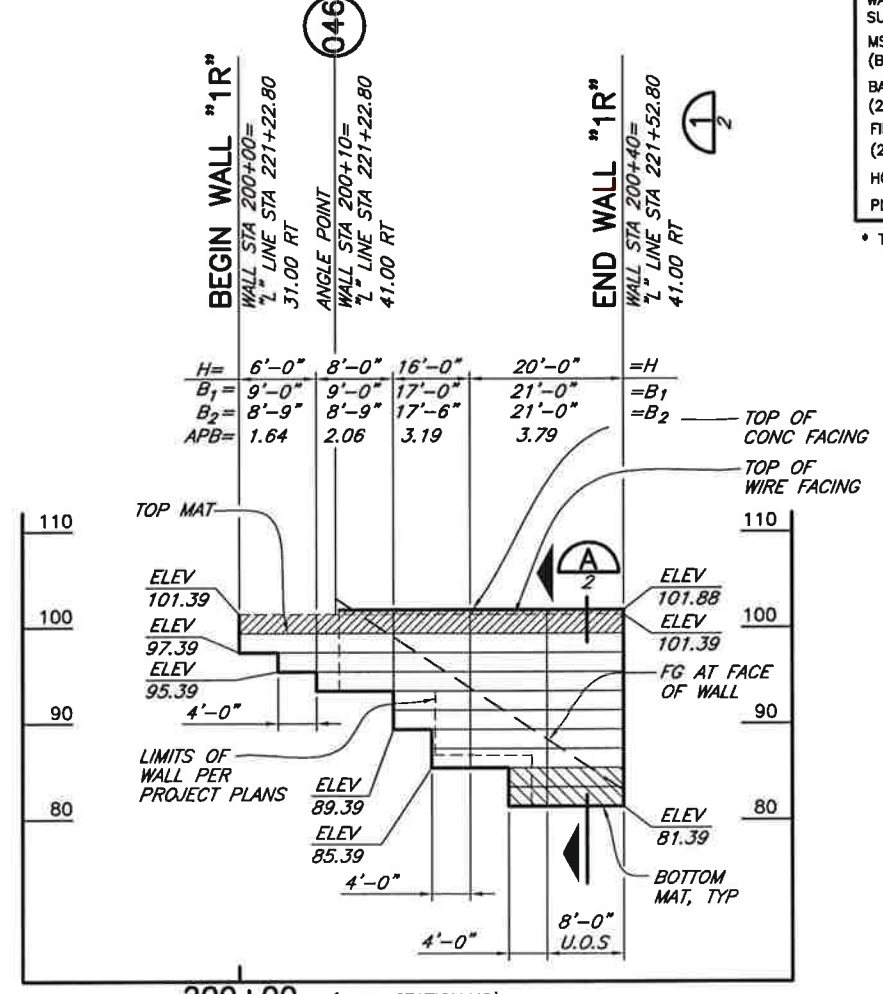


PLAN
1"=20'



WALL "1L" DEVELOPED WALL ELEVATION (BACKFACE)

1"=10' HORIZ AND VERT
 U.O.S.= UNLESS OTHERWISE STATED
 APB= APPLIED BEARING PRESSURE IN KSF (D.L.+L.L.)



WALL "1R" DEVELOPED WALL ELEVATION

1"=10' HORIZ AND VERT
 U.O.S.= UNLESS OTHERWISE STATED
 APB= APPLIED BEARING PRESSURE IN KSF (D.L.+L.L.)

DESIGN NOTES

- DESIGN IS BASED ON THE ASSUMPTION THAT BACKFILL WITHIN THE REINFORCED SOIL MASS, METHODS OF CONSTRUCTION AND QUALITY OF MATERIALS CONFORM TO THE REQUIREMENTS OF HILFIKER RETAINING WALLS.
- ASSUMED SOIL CHARACTERISTICS:
 WALL BACKFILL:
 UNIT WEIGHT: 130 PCF
 INTERNAL FRICTION ANGLE: 35°
 COHESION: 0 PSF
 RANDOM BACKFILL:
 UNIT WEIGHT: 125 PCF
 INTERNAL FRICTION ANGLE: 35°
 COHESION: 0 PSF
 COEFFICIENT OF ACTIVE SOIL PRESSURE: 0.260
 FOUNDATION SOILS:
 FRICTION ANGLE FOR SLIDING: 32°
 COHESION: 0 PSF
 MAXIMUM APPLIED BEARING PRESSURE: 3.79 KSF (D.L.+L.L.)
 IF ACTUAL CHARACTERISTICS, GRADES OR DIMENSIONS OF SOIL MATERIALS DIFFER FROM THOSE LISTED ABOVE OR SHOWN ON THE PLANS HILFIKER RETAINING WALLS SHALL BE NOTIFIED TO EVALUATE THE NEED TO REDESIGN.
- THE DESIGN REQUIRES A NON-SATURATED BACKFILL TO PREVENT HYDROSTATIC PRESSURES AND ACCELERATED CORROSION OF THE SOIL REINFORCEMENT.
 DRAINAGE CONTROL SHALL BE AS SPECIFIED IN THE PROJECT PLANS AND SPECIFICATIONS OR AS DIRECTED BY THE OWNER'S ENGINEER. PAYMENT FOR DRAINAGE SHALL BE AS SPECIFIED IN THE PROJECT SPECIFICATIONS.
- REFERENCE DOCUMENTS:
 PLANS AND SPECIFICATIONS PROVIDED IN PDF PREPARED BY THE OREGON DEPARTMENT OF TRANSPORTATION, DATED OCTOBER 2009.
- WALL DESIGN IS IN CONFORMANCE WITH AASHTO STANDARD SPECIFICATIONS FOR HIGHWAY BRIDGES, 17TH EDITION-2002, CHAPTER 5 FOR MSE WALL DESIGN.

SHORING MATERIAL LIST

BASE DEPTH	CAP MAT W4.5xW3.5	PRONGLESS MAT W4.5xW3.5	STANDARD MAT W4.5xW4	STANDARD MAT W7xW4
16'-0"	2	2	-	-
15'-9"	-	-	12	8
WALL FACE SUPPLIED	352 SQ. FT.			
MSE BACKFILL (BY OTHERS)	*206 C.Y.			
BACKING MATS (2'-0" HIGH)	46 EA			
FILTER FABRIC (2'-6" WIDE)	368 LIN FT			
HOG RINGS	600 EA			
PLIERS	1 EA			

* TOP MAT TO BOTTOM MAT, NEAT

ERS MATERIAL LIST

BASE DEPTH	PRONGLESS MAT W4.5xW3.5	STANDARD MAT W7xW4	STANDARD MAT W9.5xW4
21'-0"	8	56	12
17'-6"	-	24	-
17'-0"	4	-	-
9'-0"	8	-	-
8'-9"	-	18	-
WALL FACE SUPPLIED	2,080 SQ. FT.		
MSE BACKFILL (BY OTHERS)	*1,371 C.Y.		
BACKING MATS (2'-0" HIGH)	170 EA		
FILTER FABRIC (2'-6" WIDE)	1,360 LIN FT		
HOG RINGS	3,200 EA		
PLIERS	3 EA		
FORM ANCHORS	130 EA		

* TOP MAT TO BOTTOM MAT, NEAT

WWR MAT LEGEND

- 8x12, W4.5xW3.5 WWR SOIL REINFORCING MATS
- 8x21, W7xW4 WWR SOIL REINFORCING MATS
- 8x21, W9.5xW4 WWR SOIL REINFORCING MATS

ERS WALLS HILFIKER RETAINING WALLS

HilfiKER
 1902 HilfiKER Lane
 Eureka, CA 95503-5711
 TOLL-FREE 800.762.8962
 PH 707.443.5093 FAX 707.443.2891
 WEB SITE www.hilfiKER.com E-MAIL info@hilfiKER.com



THE DESIGN CONTAINED ON THESE DRAWINGS IS BASED ON INFORMATION PROVIDED BY THE OWNER. ON THE BASIS OF THIS INFORMATION, THE HILFIKER COMPANY HAS DESIGNED, AND IS RESPONSIBLE FOR THE INTERNAL STABILITY OF THE STRUCTURE ONLY. EXTERNAL STABILITY, INCLUDING FOUNDATION AND SLOPE STABILITY, IS THE RESPONSIBILITY OF THE OWNER.

VERIFY SCALES
 BAR IS ONE INCH ON ORIGINAL DRAWING
 0 1"
 IF NOT ONE INCH ON THESE SCALES, ACCORDING TO SCALES ACCORDING TO ORIGINAL DRAWING

CONSULTING ENGINEERS & GEOLOGISTS, INC.
 1212 W. Webster
 Eureka, CA 95501 FAX (707)441-8877
 (707)441-8855

SAW

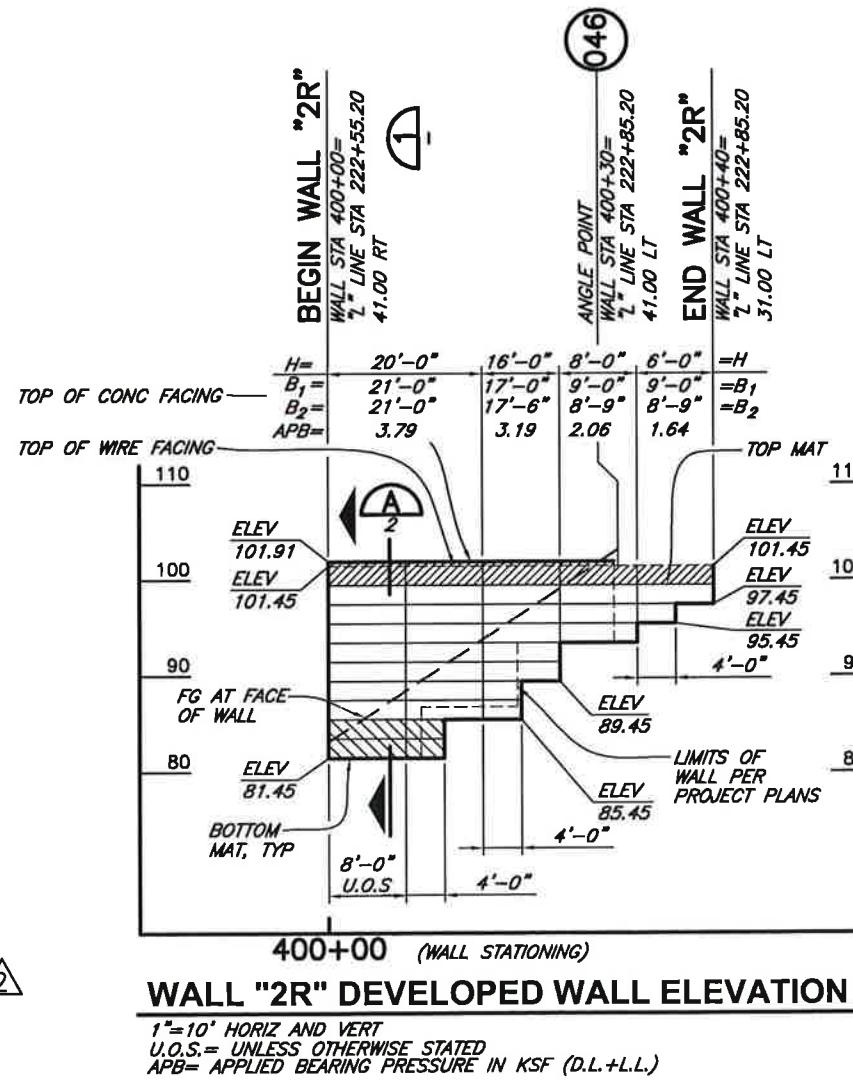
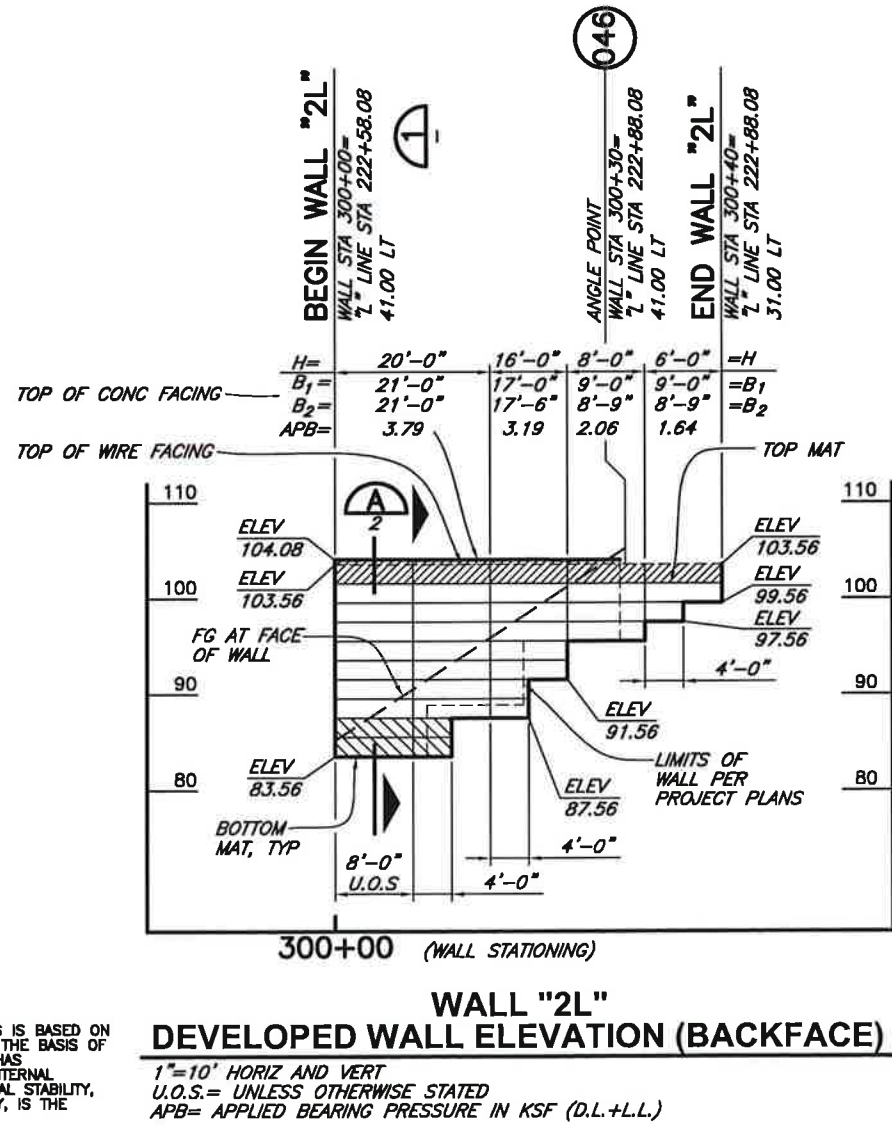
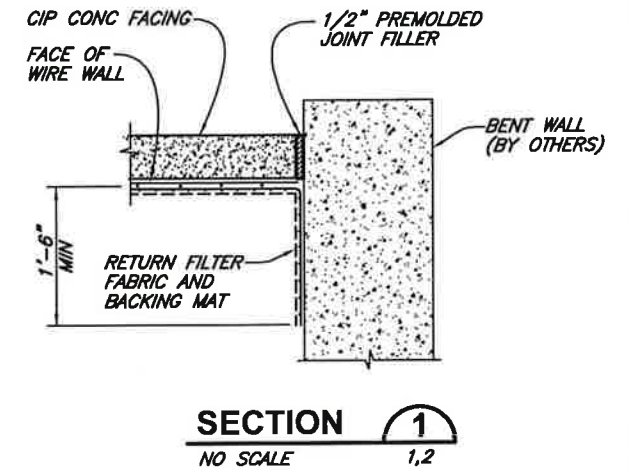
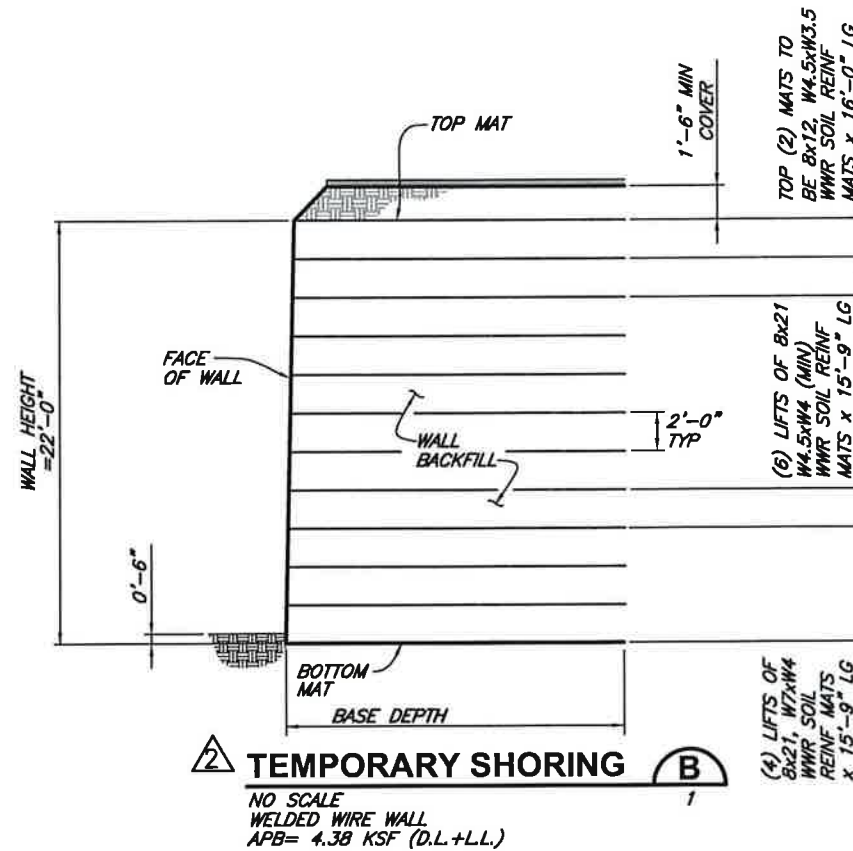
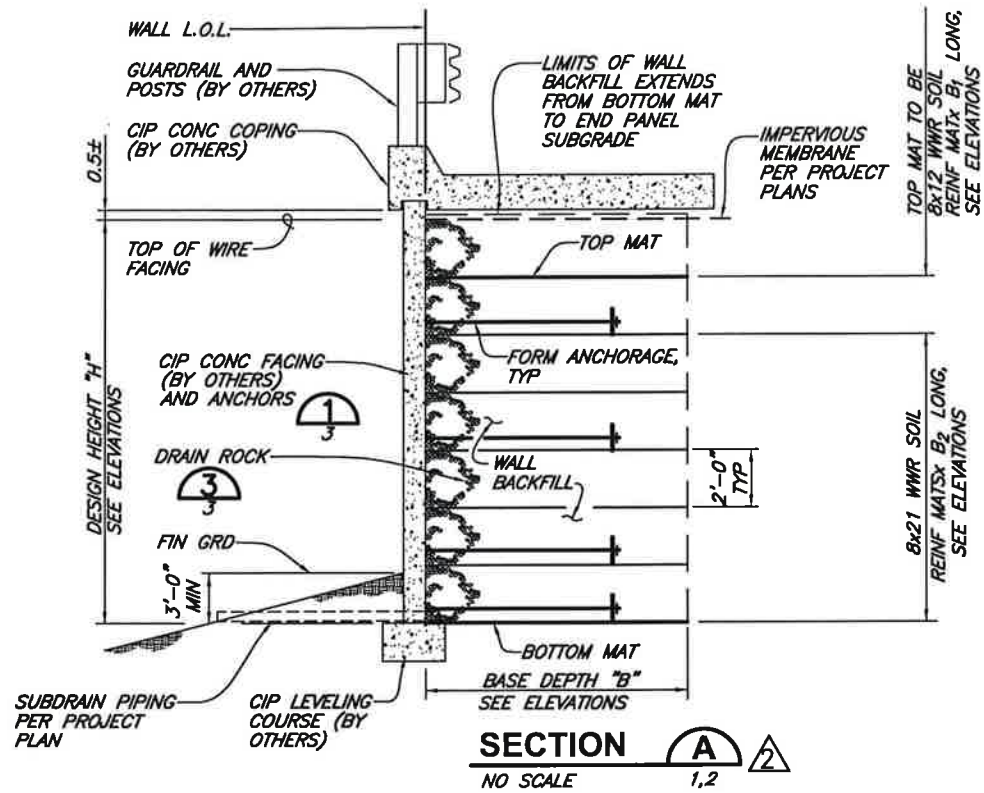
REVISION
 REVIEW COMMENTS
 DATE
 NO.
 DRG
 CHK
 APVD
 DATE
 REVIEW COMMENTS

1-84 EXIT 64 (HOOD RIVER)
 OREGON DEPARTMENT OF TRANSPORTATION
 HOOD RIVER COUNTY, OREGON

WALL PLANS & ELEVATIONS

SHEET 1 OF 4
 DATE 1/17/11
 PROJ. NO. 011002.010

CAD: \\ZING\PROJECTS\2011\011002\010-1-84-HOOD-RIVER\DWGS\011002-010-HOOD-RIVER-RZ.DWG
(HRW 091002 BE)



WWR MAT LEGEND

	8x12, W4.5xW3.5 WWR SOIL REINFORCING MATS
	8x21, W7xW4 WWR SOIL REINFORCING MATS
	8x21, W9.5xW4 WWR SOIL REINFORCING MATS



ERS HILFKER RETAINING WALLS

1902 Hilfker Lane
Eureka, CA 95503-5711
TOLL-FREE 800.762.8962
PH 707.443.5093 FAX 707.443.2891
WEBSITE www.hilfker.com E-MAIL info@hilfker.com

1902

VERIFY SCALES
BAR IS ONE INCH ON ORIGINAL DRAWING
IF NOT ONE INCH ON THIS SHEET, VERIFY SCALES ACCORDINGLY

CONSULTING ENGINEERS & GEOLOGISTS, INC.
812, W. Webster
Eureka, CA 95501 FAX (707)441-8877

SAW

DESIGN	KUN	BY	
DR	KUN		
CHK	KUN		
APVD			

DATE: 02/23/11
REVISION: 02/07/11

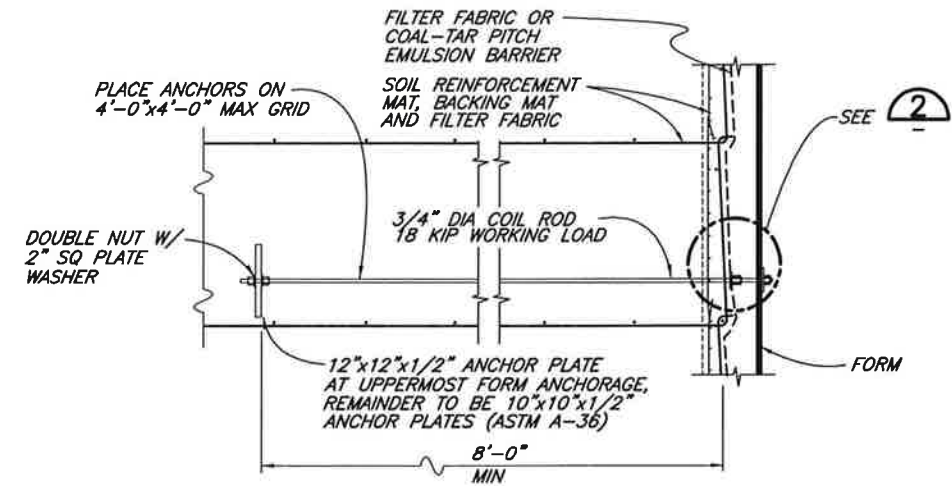
REVIEW COMMENTS: Review comments

1-84 EXIT 64 (HOOD RIVER)
OREGON DEPARTMENT OF TRANSPORTATION
HOOD RIVER COUNTY, OREGON
ELEVATIONS (CONT).
SECTIONS AND DETAILS

SHEET 2 OF 4
DATE 1/17/11
PROJ. NO. 011002.010

THE DESIGN CONTAINED ON THESE DRAWINGS IS BASED ON INFORMATION PROVIDED BY THE OWNER. ON THE BASIS OF THIS INFORMATION, THE HILFKER COMPANY HAS DESIGNED, AND IS RESPONSIBLE FOR THE INTERNAL STABILITY OF THE STRUCTURE ONLY. EXTERNAL STABILITY, INCLUDING FOUNDATION AND SLOPE STABILITY, IS THE RESPONSIBILITY OF THE OWNER.

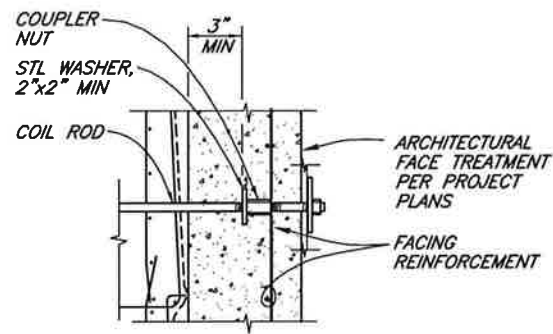
CAD: \\ZING\PROJECTS\2011\011002\010-1-84-HOOD-RIVER\DWGS\011002-010-HOOD-RIVER-R2.DWG
(HRW 091002 BE)



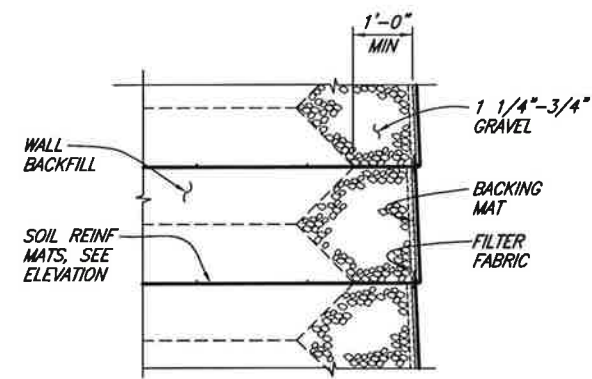
NOTES:

1. UPPERMOST ANCHORS TO BE INSTALLED IMMEDIATELY ABOVE THE SECOND MAT DOWN.
2. 4'-0"x4'-0" INSTALLATION GRID PROVIDES FOR A 3' PER HOUR CONCRETE POUR RATE AT 60' F; EXCEPT POUR RATE ABOVE UPPERMOST ANCHORS IS TO BE SLOWED TO 1' PER HOUR.
3. BACK FORM AND FORM TIES TO BE INSTALLED ABOVE TOP MATS.
4. 10x10"x6" (12"x12"x6" FOR UPPERMOST ANCHORS) CONCRETE BLOCKS MAY BE SUBSTITUTED FOR THE ANCHOR PLATES.
5. METHOD OF ATTACHING FORMS MAY VARY FROM THIS DETAIL. SEE PROJECT PLANS FOR OTHER DETAILS.

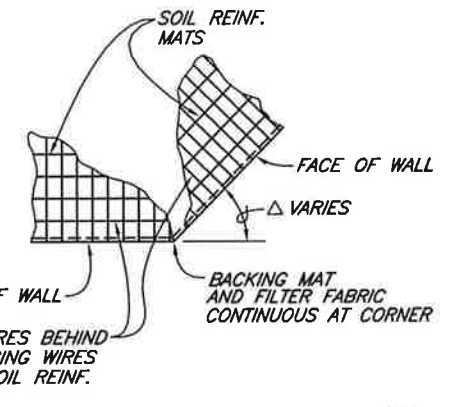
DETAIL 1
NO SCALE



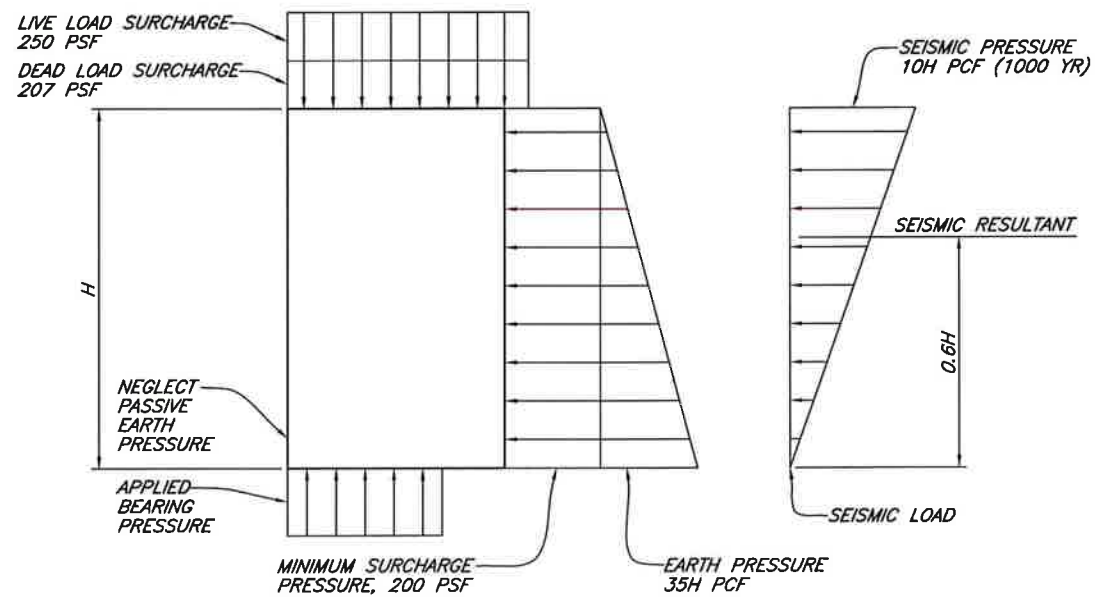
DETAIL 2
NO SCALE



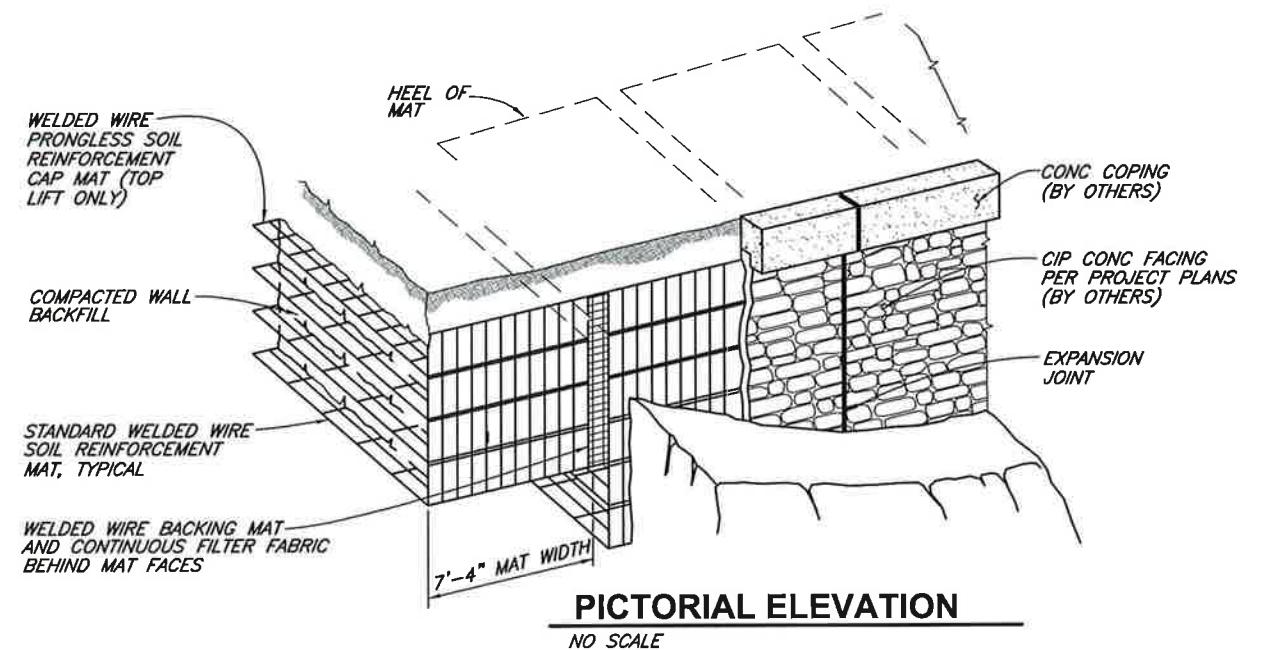
DETAIL 3
NO SCALE



CONVEX ANGLE POINT
NO SCALE



WALL LOADING CONDITIONS
NO SCALE



PICTORIAL ELEVATION
NO SCALE

THE DESIGN CONTAINED ON THESE DRAWINGS IS BASED ON INFORMATION PROVIDED BY THE OWNER, ON THE BASIS OF THIS INFORMATION, THE HILFIKER COMPANY HAS DESIGNED, AND IS RESPONSIBLE FOR THE INTERNAL STABILITY OF THE STRUCTURE ONLY. EXTERNAL STABILITY, INCLUDING FOUNDATION AND SLOPE STABILITY, IS THE RESPONSIBILITY OF THE OWNER.



ERS
HILFIKER RETAINING WALLS

1902 Hilfiaker Lane
Eureka, CA 95503-5711
TOLL-FREE 800.762.8962
PH 707.443.5093 FAX 707.443.2891
WEB SITE www.hilfiaker.com E-MAIL info@hilfiaker.com

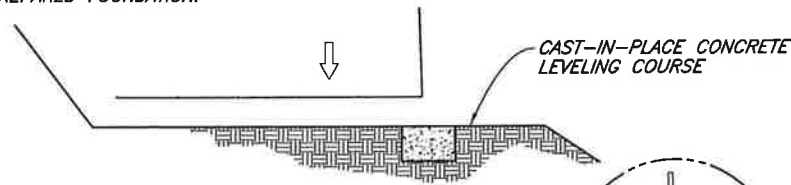
HW

SINCE 1902
QUALITY PRODUCTS

VERIFY SCALES		BAR IS ONE INCH ON ORIGINAL DRAWING		IF NOT ONE INCH ON THIS SHEET, ADJUST SCALES ACCORDINGLY	
CONSULTING ENGINEERS & GEOLOGISTS, INC.		812 W. Wabasha Eureka, CA 95501		TEL 707/441-8855 FAX 707/441-8877	
S&W		K/JN		BY	
REVISION		DATE		REVIEW COMMENTS	
02/23/11		02/07/11		Review comments	
NO.		NO.		NO.	
DSGN K/JN		CHK K/JN		APVD	
DR AMD		CHK K/JN		APVD	
1-84 EXIT 64 (HOOD RIVER)		OREGON DEPARTMENT OF TRANSPORTATION		HOOD RIVER COUNTY, OREGON	
SHEET		3 OF 4		DATE 1/17/11	
PROJECT NO.		011002.010		DETAILS	

STEP 1

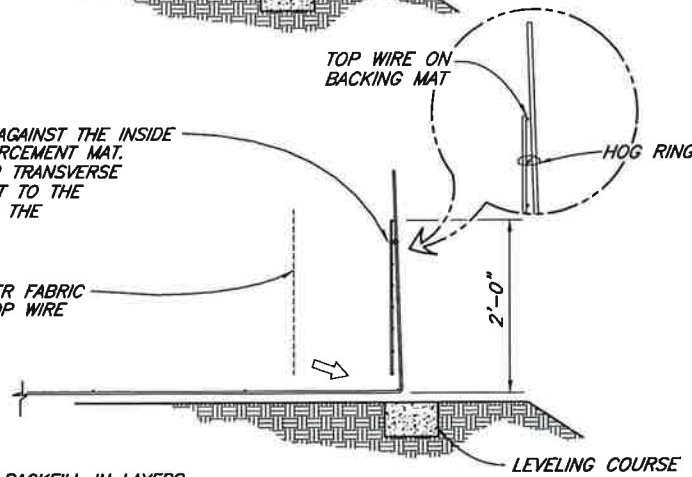
PLACE THE FIRST COURSE OF SOIL REINFORCEMENT MATS ON PREPARED FOUNDATION.



STEP 2

PLACE THE BACKING MAT AGAINST THE INSIDE FACE OF THE SOIL REINFORCEMENT MAT. CLIP THE SECOND-TO-TOP TRANSVERSE WIRE ON THE BACKING MAT TO THE TOP TRANSVERSE WIRE ON THE SOIL REINFORCEMENT MAT.

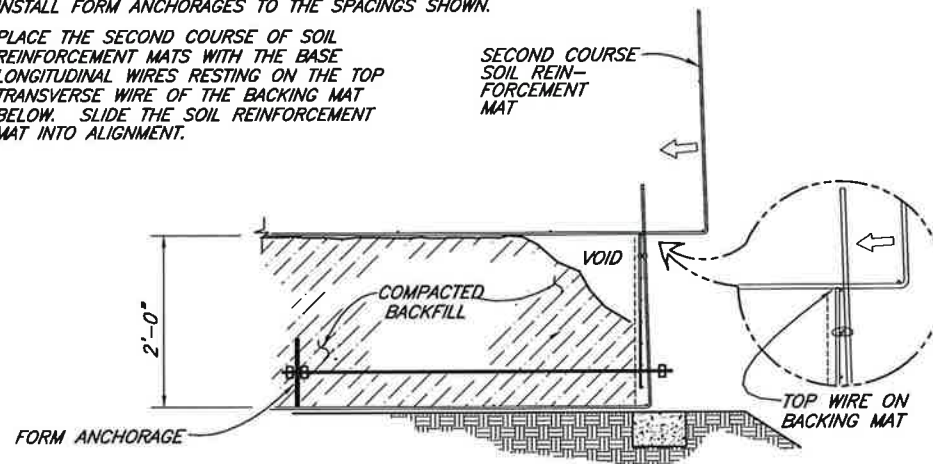
INSTALL CONTINUOUS FILTER FABRIC AND HOG-RING TO THE TOP WIRE ON THE BACKING MAT.



STEP 3

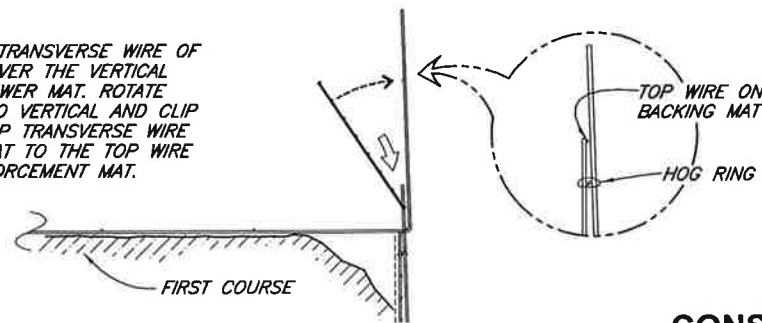
PLACE AND COMPACT THE BACKFILL IN LAYERS AND DENSITIES AS SPECIFIED IN THESE PLANS. LEAVE A VOID AT THE FACE AS SHOWN. INSTALL FORM ANCHORAGES TO THE SPACINGS SHOWN.

PLACE THE SECOND COURSE OF SOIL REINFORCEMENT MATS WITH THE BASE LONGITUDINAL WIRES RESTING ON THE TOP TRANSVERSE WIRE OF THE BACKING MAT BELOW. SLIDE THE SOIL REINFORCEMENT MAT INTO ALIGNMENT.



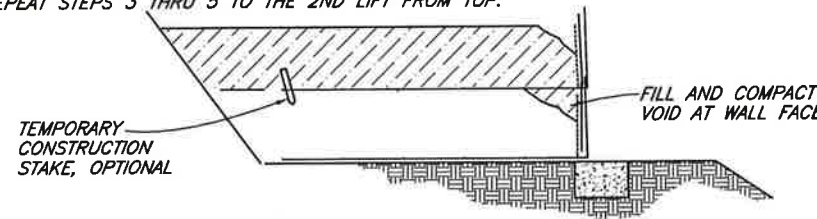
STEP 4

HOOK THE BOTTOM TRANSVERSE WIRE OF THE BACKING MAT OVER THE VERTICAL PRONGS ON THE LOWER MAT. ROTATE THE BACKING MAT TO VERTICAL AND CLIP THE SECOND-TO-TOP TRANSVERSE WIRE ON THE BACKING MAT TO THE TOP WIRE ON THE SOIL REINFORCEMENT MAT.



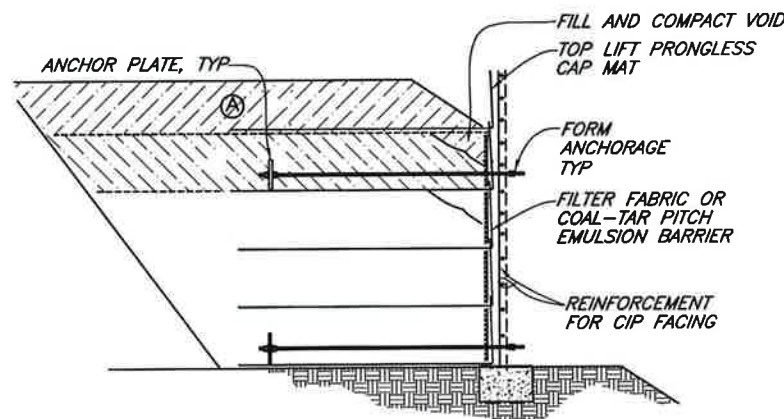
STEP 5

INSTALL THE FILTER FABRIC. PLACE AND COMPACT THE BACKFILL TO THE BASE ELEVATION OF THE NEXT MAT. REPEAT STEPS 3 THRU 5 TO THE 2ND LIFT FROM TOP.



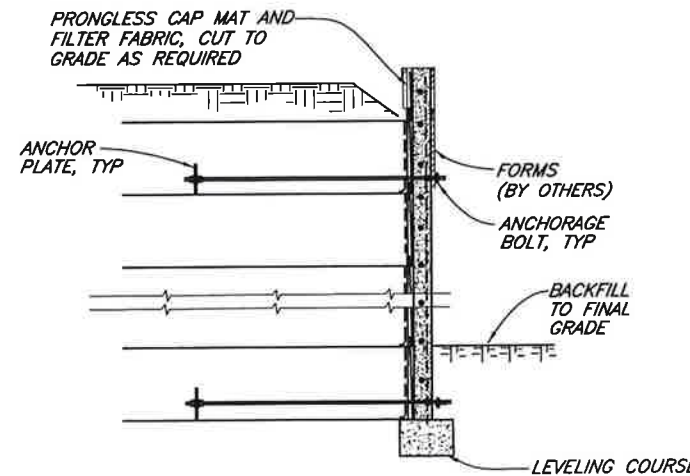
STEP 6 TOP LIFT

PLACE THE 2ND LIFT MAT, BACKING MAT AND FILTER FABRIC. INSTALL ANCHOR BLOCKS AND COIL RODS. PLACE BACKFILL AND COMPACT. PLACE THE TOP LIFT PRONGLESS CAP MAT AND FILTER FABRIC. BACKFILL "A" TO 2'-0" MINIMUM COVER OVER THE CAP. MONITOR SETTLEMENT PER PROJECT SPECIFICATIONS SPO0596.46 (b-4) AND SPO0596.46 (f). INSTALL FILTER FABRIC OR COAL-TAR PITCH EMULSION BARRIER AT FACE OF WALL. INSTALL REINFORCING FOR CAST-IN-PLACE FACE.



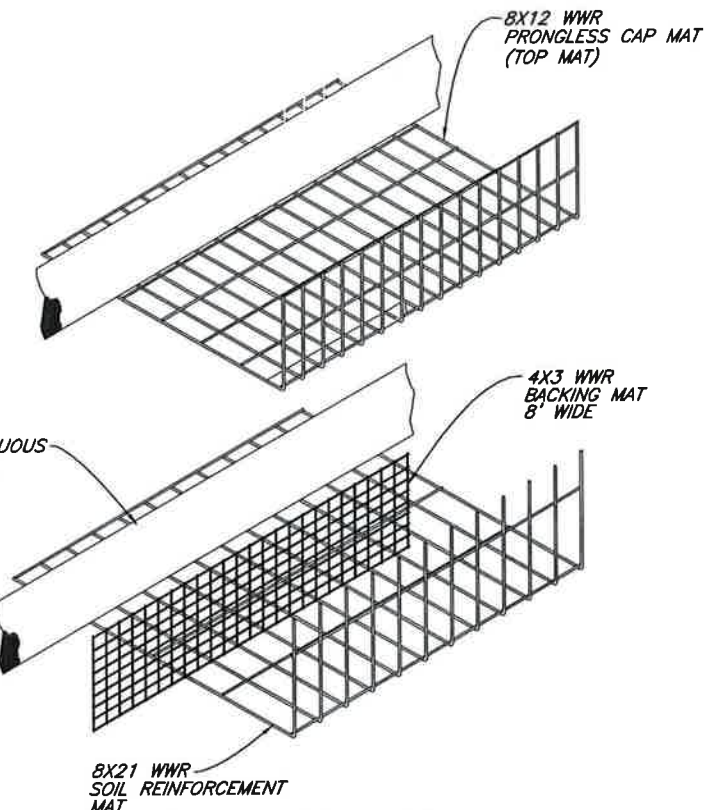
STEP 7

ATTACH THE FORMS TO THE FORM ANCHORAGE BOLTS. CAST CONCRETE FACING. STRIP FORMS AND BACKFILL AT TOE TO FINAL GRADE. FINISH TOP OF WALL PER PROJECT PLANS.



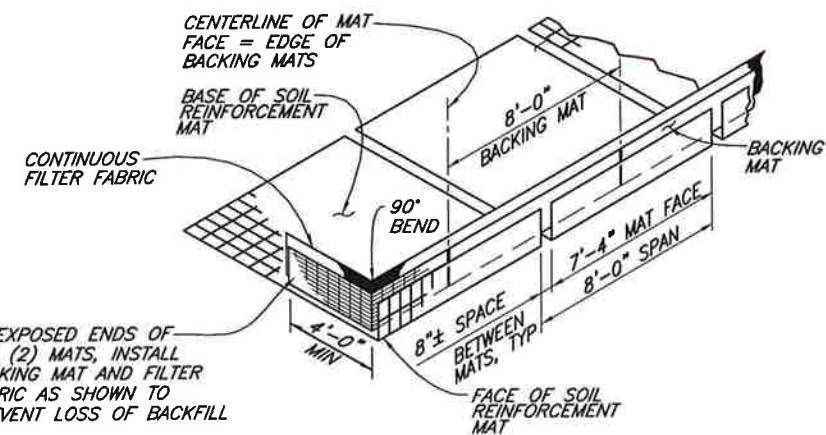
CONSTRUCTION SEQUENCE

NO SCALE



WALL COMPONENTS

NO SCALE



ASSEMBLED WALL COMPONENTS DETAIL

NO SCALE

THE DESIGN CONTAINED ON THESE DRAWINGS IS BASED ON INFORMATION PROVIDED BY THE OWNER. ON THE BASIS OF THIS INFORMATION, THE HILFIKER COMPANY HAS DESIGNED, AND IS RESPONSIBLE FOR THE INTERNAL STABILITY OF THE STRUCTURE ONLY. EXTERNAL STABILITY, INCLUDING FOUNDATION AND SLOPE STABILITY, IS THE RESPONSIBILITY OF THE OWNER.



ERS
HILFIKER RETAINING WALLS

 1902 Hilfiker Lane
 Eureka, CA 95503-5711
 TOLL-FREE 800.762.8962
 PH 707.443.5093 FAX 707.443.2891
 WEB SITE www.hilfiker.com E-MAIL info@hilfiker.com

VERIFY SCALES		BAR IS ONE INCH ON ORIGINAL DRAWING		IF NOT ONE INCH ON THIS SHEET INDUSTRY SCALES APPLY	
CONSULTING ENGINEERS & GEOLOGISTS, INC.		612 W. Webber Ave. Eureka, CA 95501		(707) 441-8855 FAX (707) 441-8877	
SEW		K/JN		BY	
Review comments		K/JN		DATE	
02/23/11		02/07/11		NO.	
1-84 EXIT 64 (HOOD RIVER)		OREGON DEPARTMENT OF TRANSPORTATION		HOOD RIVER COUNTY, OREGON	
WALL COMPONENTS AND CONSTRUCTION SEQUENCE		SHEET		4 OF 4	
DATE 1/17/11		PROJ. NO.		011002.010	

CAD: \\ZING\PROJECTS\2011\011002\10-1-84-HOOD-RIVER\DWGS\011002-010-HOOD-RIVER-RZ.DWG (1/17/11 09:10:02 BE)