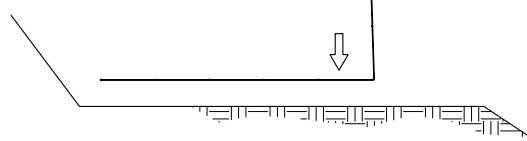
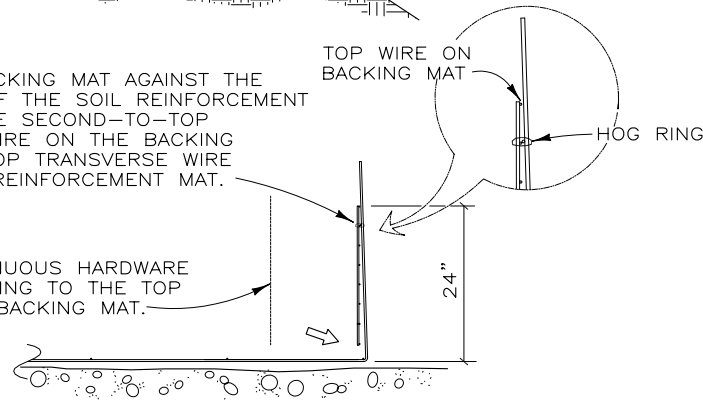


STEP 1
PLACE THE FIRST COURSE OF SOIL REINFORCEMENT MATS ON PREPARED FOUNDATION



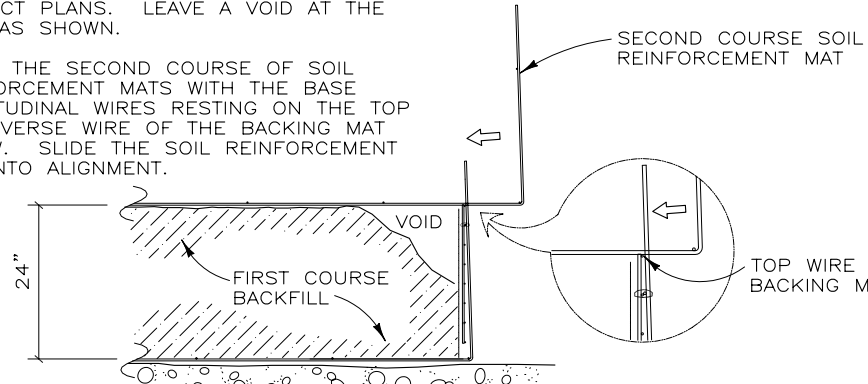
STEP 2
PLACE THE BACKING MAT AGAINST THE INSIDE FACE OF THE SOIL REINFORCEMENT MAT. CLIP THE SECOND-TO-TOP TRANSVERSE WIRE ON THE BACKING MAT TO THE TOP TRANSVERSE WIRE ON THE SOIL REINFORCEMENT MAT.

INSTALL CONTINUOUS HARDWARE CLOTH, HOG-RING TO THE TOP WIRE ON THE BACKING MAT.

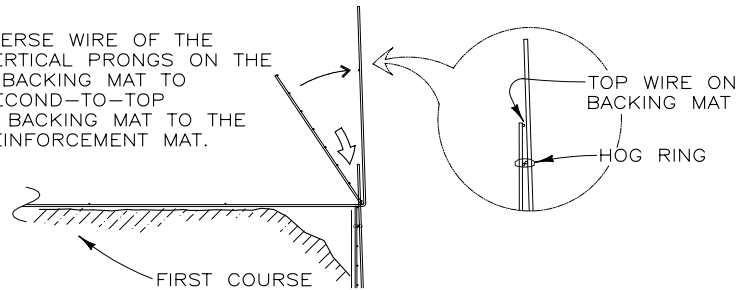


STEP 3
PLACE AND COMPACT THE BACKFILL IN LAYERS AND DENSITIES AS SPECIFIED IN THE PROJECT PLANS. LEAVE A VOID AT THE FACE AS SHOWN.

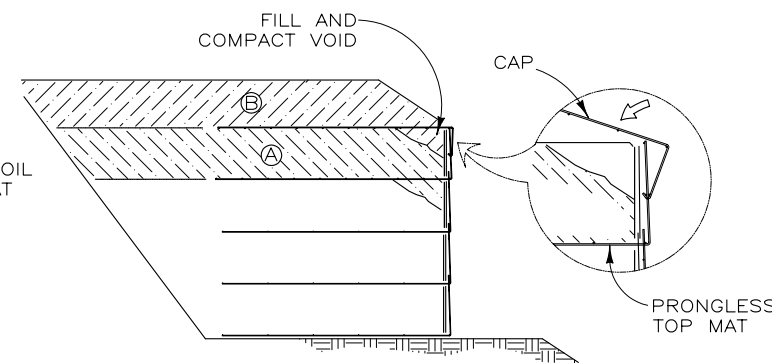
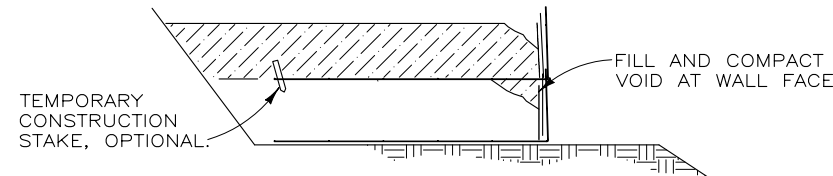
PLACE THE SECOND COURSE OF SOIL REINFORCEMENT MATS WITH THE BASE LONGITUDINAL WIRES RESTING ON THE TOP TRANSVERSE WIRE OF THE BACKING MAT BELOW. SLIDE THE SOIL REINFORCEMENT MAT INTO ALIGNMENT.



STEP 4
HOOK THE BOTTOM TRANSVERSE WIRE OF THE BACKING MAT OVER THE VERTICAL PRONGS ON THE LOWER MAT. ROTATE THE BACKING MAT TO VERTICAL AND CLIP THE SECOND-TO-TOP TRANSVERSE WIRE ON THE BACKING MAT TO THE TOP WIRE ON THE SOIL REINFORCEMENT MAT.



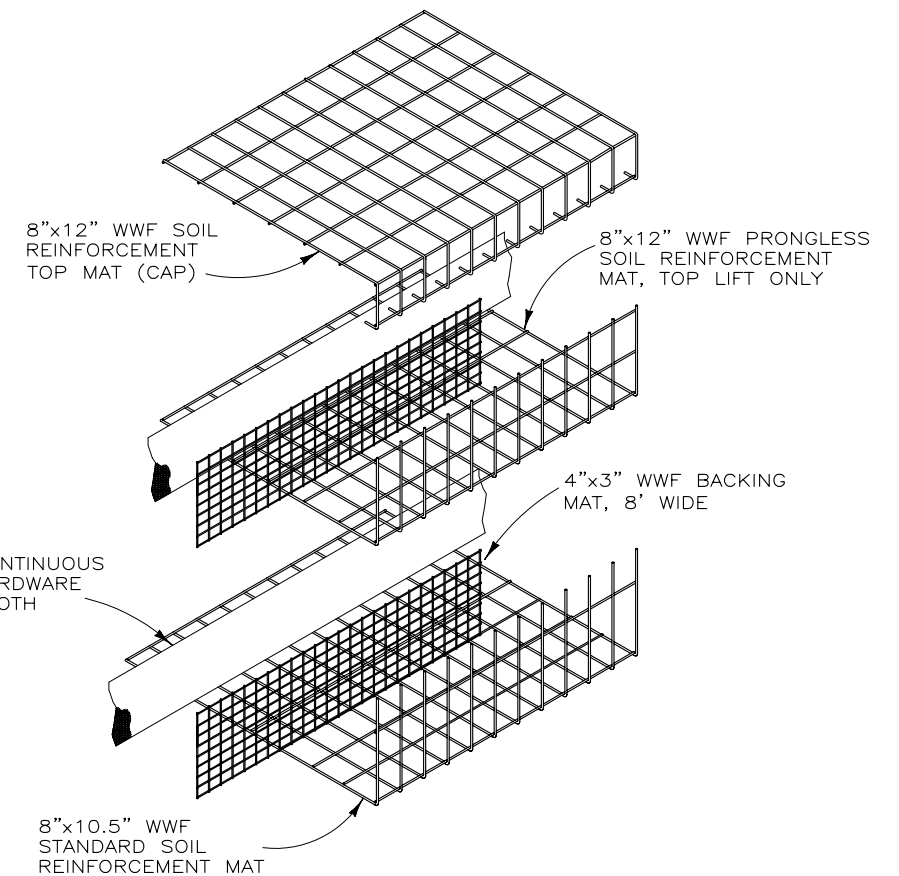
STEP 5
INSTALL THE CONTINUOUS HARDWARE CLOTH. PLACE AND COMPACT THE BACKFILL TO THE BASE ELEVATION OF THE NEXT MAT. REPEAT STEPS 3 THROUGH 5 TO THE TOP LIFT.



STEP 6: TOP LIFT
PLACE THE TOP LIFT PRONGLESS MAT, BACKING MAT AND CONTINUOUS HARDWARE CLOTH. PLACE AND COMPACT BACKFILL IN AREA "A". HOOK THE CAP OVER THE MIDDLE TRANSVERSE WIRE ON THE PRONGLESS MAT, AND ROTATE INTO PLACE. BACKFILL "B" TO 1'-6" MIN. COVER OVER THE CAP.

CONSTRUCTION SEQUENCE

NOT TO SCALE

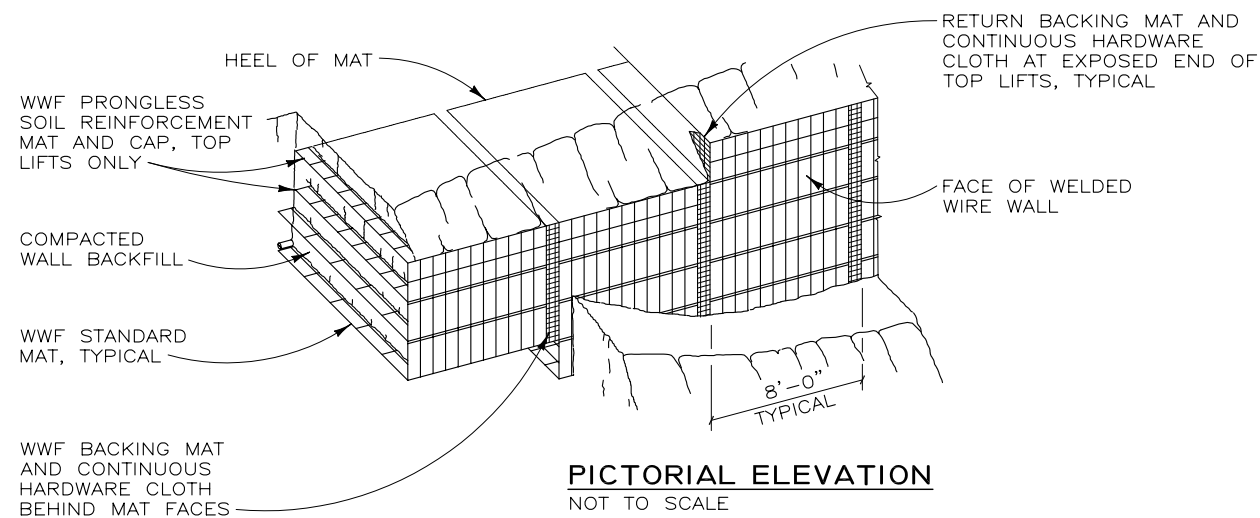


WALL COMPONENTS

NOT TO SCALE

PROJECT-SPECIFIC NOTES:

1. REFERENCE DRAWINGS: BASED ON PLANS FROM MUNSELLE CIVIL ENGINEERING DATED JULY 2011, SHEETS 1 THROUGH 10 AND A SKETCH FROM TOM LEADER STUDIO RECEIVED 30 JUNE 2011.
2. IT IS ASSUMED THAT ALL MATERIALS, BACKFILL AND CONSTRUCTION METHODS FOR HILFIKER M.S.E. WALLS AND/OR GABIONS WILL CONFORM TO HILFIKER'S SPECIFICATIONS AND/OR THOSE OF THE HILFIKER ENGINEERING CONSULTANT.
3. THIS IS NOT AN ENGINEERED SUBMITTAL. ALL INFORMATION HEREON IS DERIVED FROM THE REFERENCE DRAWINGS, AND IS SUBJECT TO GEOMETRIC AND GEOTECHNICAL CONFIRMATION. THE APPLICABLE HILFIKER CONSTRUCTION GUIDE AND SPECIFICATIONS ARE AN INTEGRAL PART OF THIS SUBMITTAL.
4. UPON ENGINEERED DESIGN, HILFIKER RETAINING WALLS SHALL BE RESPONSIBLE ONLY FOR THE INTERNAL STABILITY OF THE RETAINING WALL, AND NOT FOR GLOBAL STABILITY OR FOUNDATION BEARING CAPACITY. THE OWNER/CONTRACTOR SHALL BE RESPONSIBLE FOR ALL JOB SITE DRAINAGE, SAFETY AND FALL PROTECTION PROVISIONS FOR WORKERS IN COMPLIANCE WITH OSHA AND ANY OTHER APPLICABLE REQUIREMENTS.
5. WALL DESIGN SHALL REQUIRE A NON-SATURATED BACKFILL. SURFACE AND SUBSURFACE DRAINAGE CONTROL MAY BE REQUIRED TO PREVENT SATURATION OF THE BACKFILL OR TO RELIEVE HYDROSTATIC PRESSURES. DRAINAGE CONTROL SHALL BE AS SPECIFIED IN THE OWNER'S PROJECT PLANS AND SPECIFICATIONS, OR AS DIRECTED BY THE OWNER'S ENGINEER.



PICTORIAL ELEVATION

NOT TO SCALE

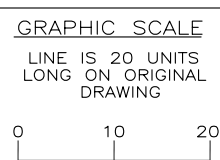
SUPPLIED QUANTITIES

WELDED WIRE WALL		FACE AREA	
NORTH WALL		752 SQ. FT.	
SOUTH WALL		752 SQ. FT.	
WALL AT STA. 17+74.35		944 SQ. FT.	
TOTALS		2,448 SQ. FT.	
GABIONS			
LxWxH	CY	QTY	TOTAL CY
6x2x2	0.89	55	48.89
4'x2'x2'	0.59	1	0.59
2'x2'x2'	0.30	1	0.30
TOTALS			49.78

110630BW CHALK HILL ROAD

THIS DRAWING IS FURNISHED SOLELY FOR THE USE OF OR IN CONNECTION WITH THIS PROJECT AND THE PROPRIETARY INFORMATION SHOWN HEREON IS NOT TO BE TRANSMITTED TO ANY OTHER ORGANIZATION WITHOUT SPECIFIC WRITTEN PERMISSION.

REV. NO.	DATE	BY	DESCRIPTION
1	11 AUG 11	LC	WALL AT STA. 17+74.35 ADDED TO DRAWINGS



PROJ. MGR.
HKH
ENGINEER
CADD BY
AMJ/LC

HILFIKER RETAINING WALLS

1902 Hilfiker Lane
Eureka, CA 95503-5711
TOLL-FREE 800.762.8962
PH 707.443.5093 FAX 707.443.2891
WEBSITE www.hilfiker.com E-MAIL info@hilfiker.com

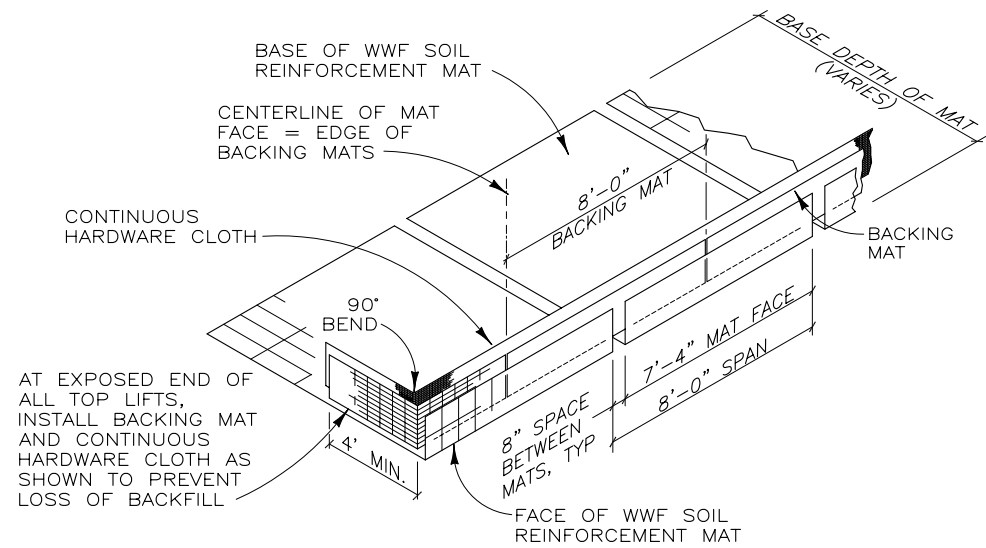
DWG DATE
29 JUL 11
REVISION DATE
11 AUG 11
SCALE
NOTED

FOR BIDDING PURPOSES ONLY

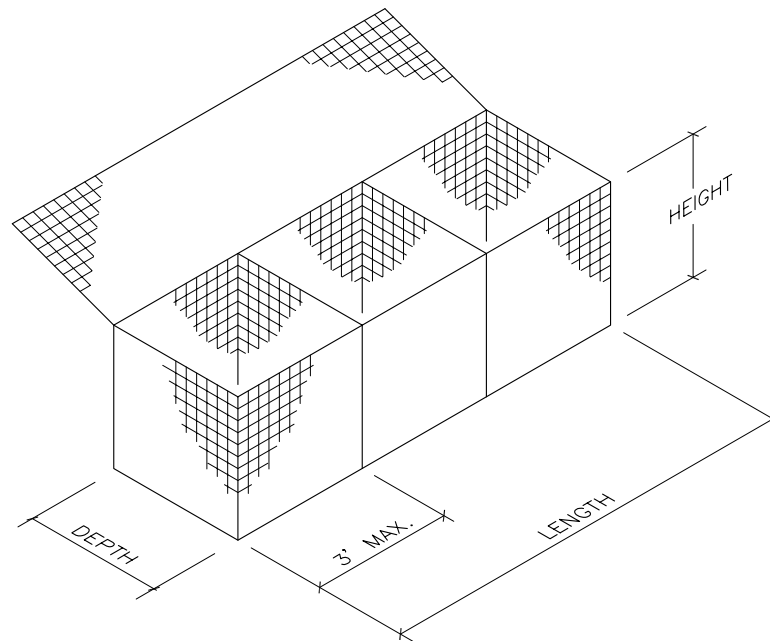
WELDED WIRE RETAINING WALL
CHALK HILL ROAD
HARTMAN/O'BRIEN RESIDENCE
HEALDSBURY, CALIFORNIA

DETAILS AND NOTES

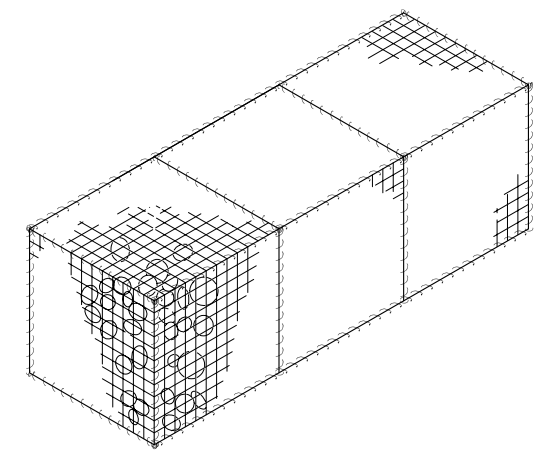
PROJECT NO.
110630BW
SHEET
1
OF 4



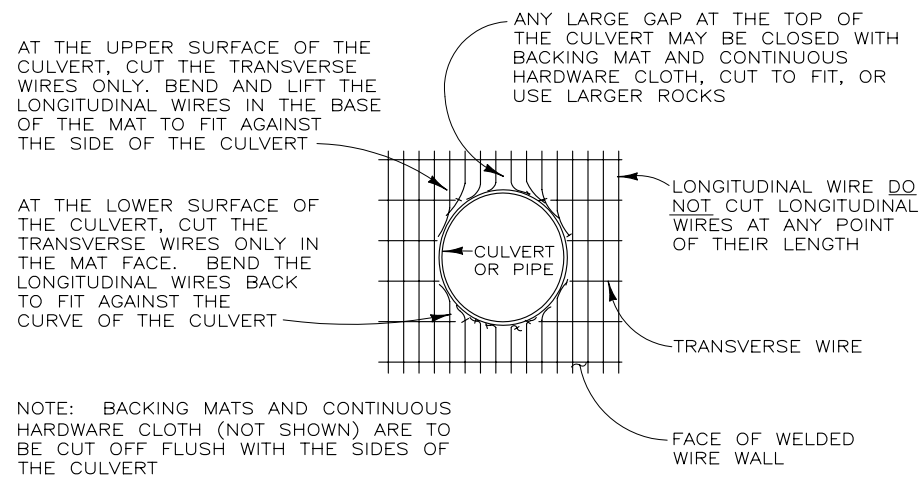
ISOMETRIC VIEW
WELDED WIRE WALL COMPONENTS WITH RETURN MAT
 NOT TO SCALE



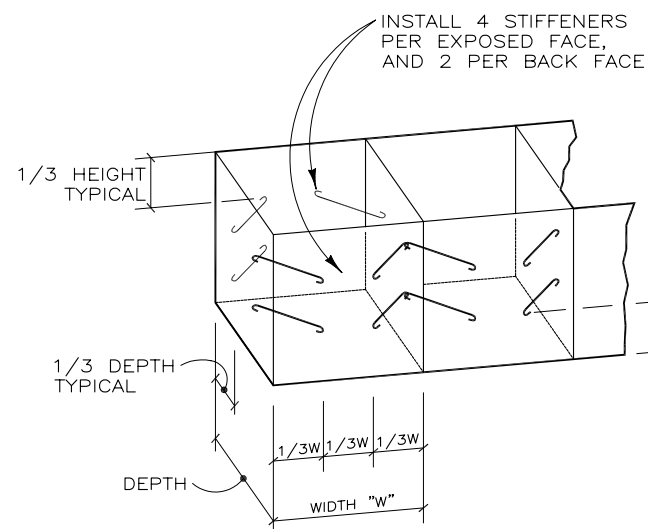
TYPICAL GABION
 NOT TO SCALE



TYPICAL ASSEMBLED GABION
 NOT TO SCALE

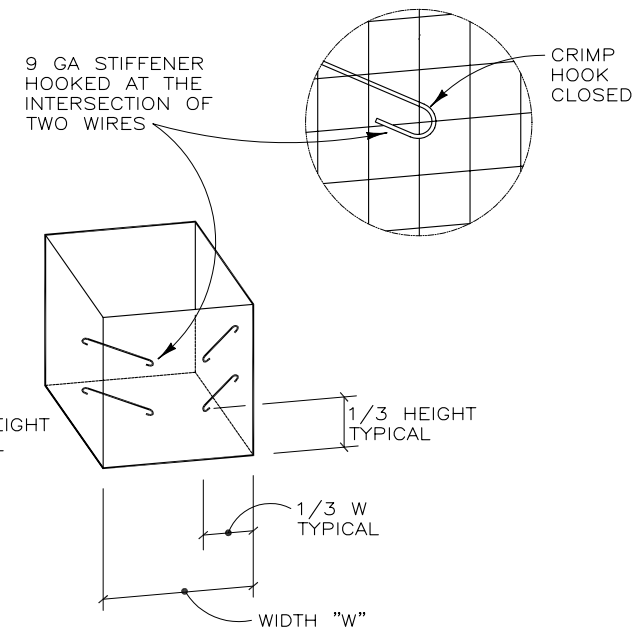


ELEVATION
CULVERT THRU WALL FACE
 NOT TO SCALE



WHERE HEIGHT OF GABION IS 18" OR LESS, INSTALL 2 STIFFENERS PER FACE
 WHERE HEIGHT IS 12", NO STIFFENERS REQUIRED

END CELLS

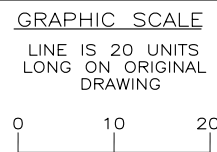


STIFFENER DETAILS
 NOT TO SCALE

110630BW CHALK HILL ROAD

THIS DRAWING IS FURNISHED SOLELY FOR THE USE OF OR IN CONNECTION WITH THIS PROJECT AND THE PROPRIETARY INFORMATION SHOWN HEREON IS NOT TO BE TRANSMITTED TO ANY OTHER ORGANIZATION WITHOUT SPECIFIC AUTHORIZATION BY THE HILFIKER COMPANY. HILFIKER RETAINING WALLS ARE PROTECTED BY ONE OR MORE OF THE FOLLOWING PATENTS: 243,613; 243,697; 288,616; 4,117,686; 4,329,089; 4,324,506; 4,391,557; 4,505,621; 4,343,318; 4,661,023; 4,856,939; 4,929,125; 5,076,735; 5,647,695; 5,722,799; 5,733,072; 6,357,970B1; 6,874,975B2; 7,033,118B2; AND OTHERS. OTHER PATENTS PENDING (2008)

REV.NO.	DATE	BY	DESCRIPTION
1	11 AUG 11	LC	WALL AT STA. 17+74.35 ADDED TO DRAWINGS



PROJ. MGR.
 HKH
 ENGINEER
 CADD BY
 AMJ/LC

HILFIKER RETAINING WALLS

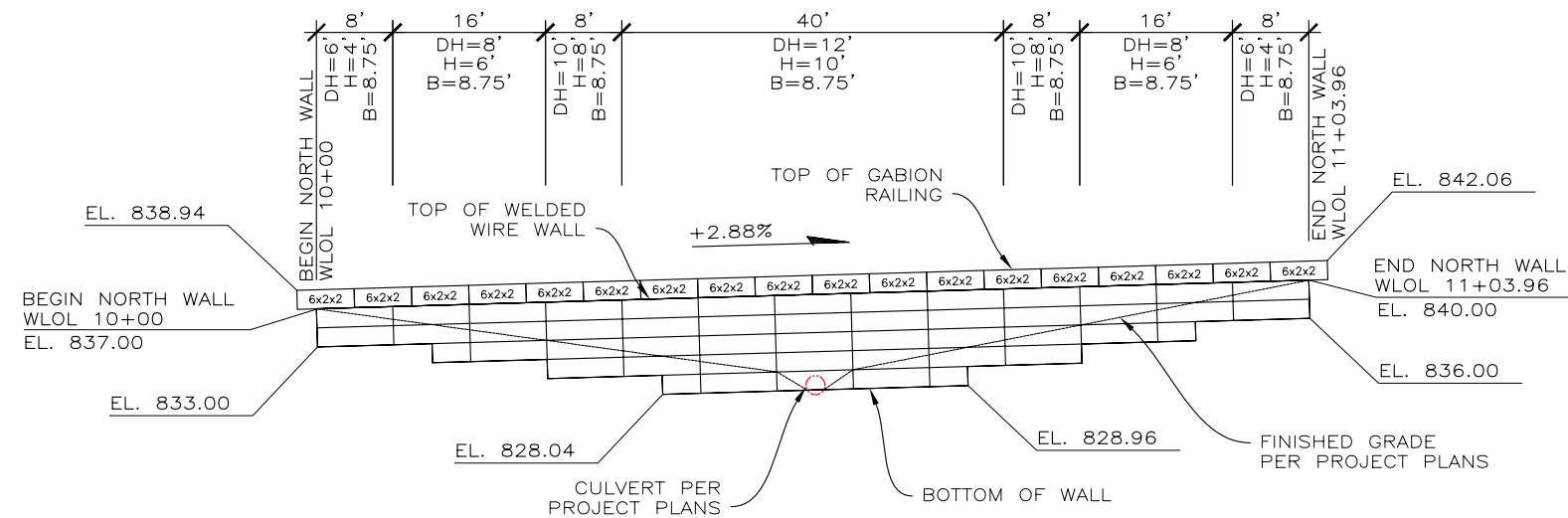
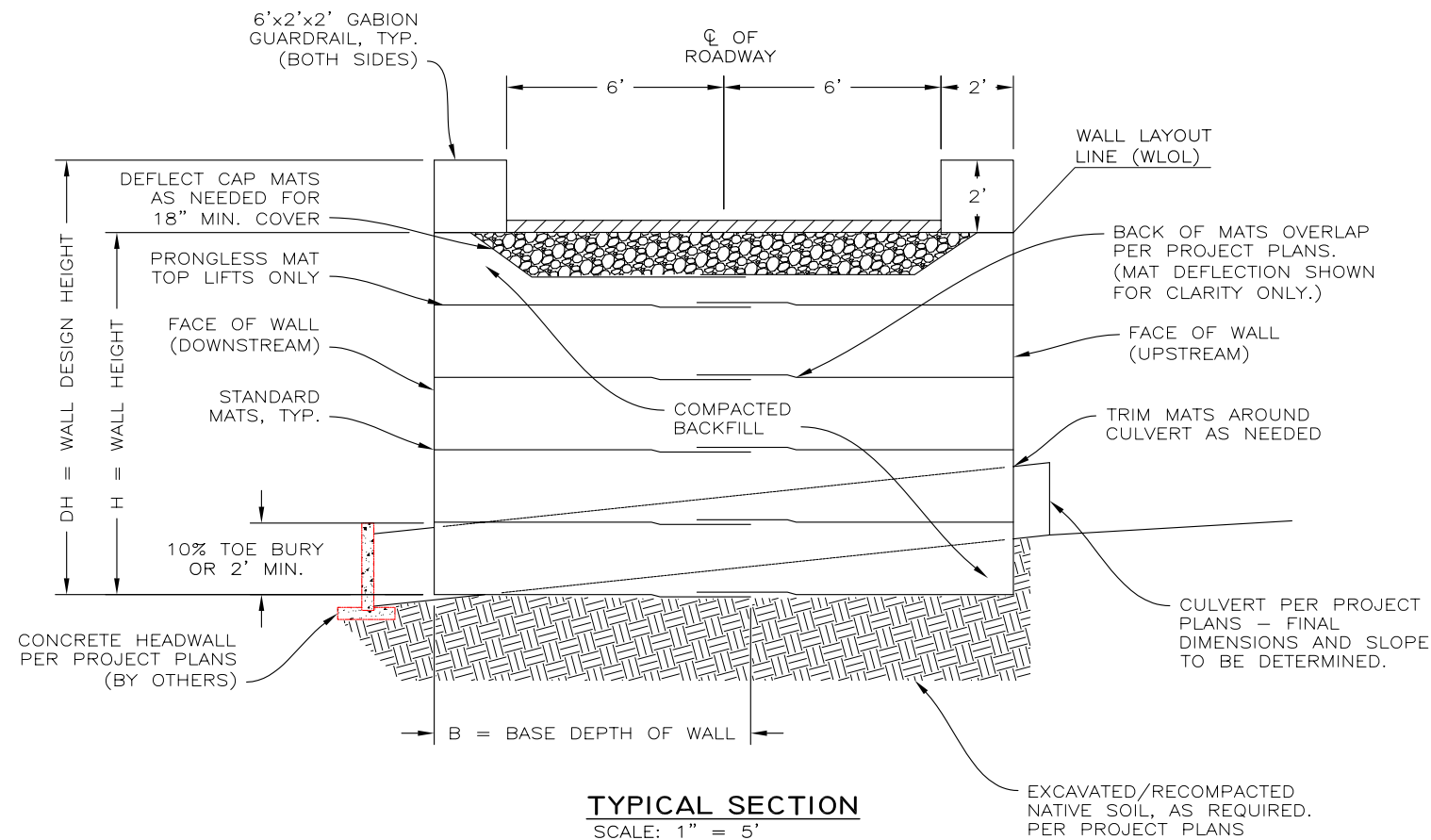
1902 Hilfiker Lane
 Eureka, CA 95503-5711
 TOLL-FREE 800.762.8962
 PH 707.443.5093 FAX 707.443.2891
 WEBSITE www.hilfiker.com E-MAIL info@hilfiker.com

1902
 QUALITY PRODUCTS

DWG DATE
 29 JUL 11
 REVISION DATE
 11 AUG 11
 SCALE
 NOTED

FOR BIDDING PURPOSES ONLY
 WELDED WIRE RETAINING WALL
CHALK HILL ROAD
 HARTMAN/O'BRIEN RESIDENCE
 HEALDSBURY, CALIFORNIA
 GABION AND WWW DETAILS

PROJECT NO.
 110630BW
 SHEET
2
 OF 4



THIS DRAWING IS FURNISHED SOLELY FOR THE USE OF OR IN CONNECTION WITH THIS PROJECT AND THE PROPRIETARY INFORMATION SHOWN HEREON IS NOT TO BE TRANSMITTED TO ANY OTHER ORGANIZATION WITHOUT SPECIFIC AUTHORIZATION BY THE HILFIKER COMPANY. HILFIKER RETAINING WALLS ARE PROTECTED BY ONE OR MORE OF THE FOLLOWING PATENTS: 243,613; 243,697; 288,616; 4,117,686; 4,329,089; 4,324,506; 4,391,557; 4,505,621; 4,343,318; 4,661,023; 4,856,939; 4,929,125; 5,076,735; 5,647,695; 5,722,799; 5,733,072; 6,357,970B1; 6,874,975B2; 7,033,118B2; AND OTHERS. OTHER PATENTS PENDING (2008)

TO DRAWINGS

HILFIKER RETAINING WALLS

HW

1902 Hilfiker Lane
Eureka, CA 95503-5711
TOLL-FREE 800.762.8962
PH 707.443.5093 FAX 707.443.2891
WEBSITE www.hilfiker.com E-MAIL info@hilfiker.com

SINCE 1902
QUALITY PRODUCTS

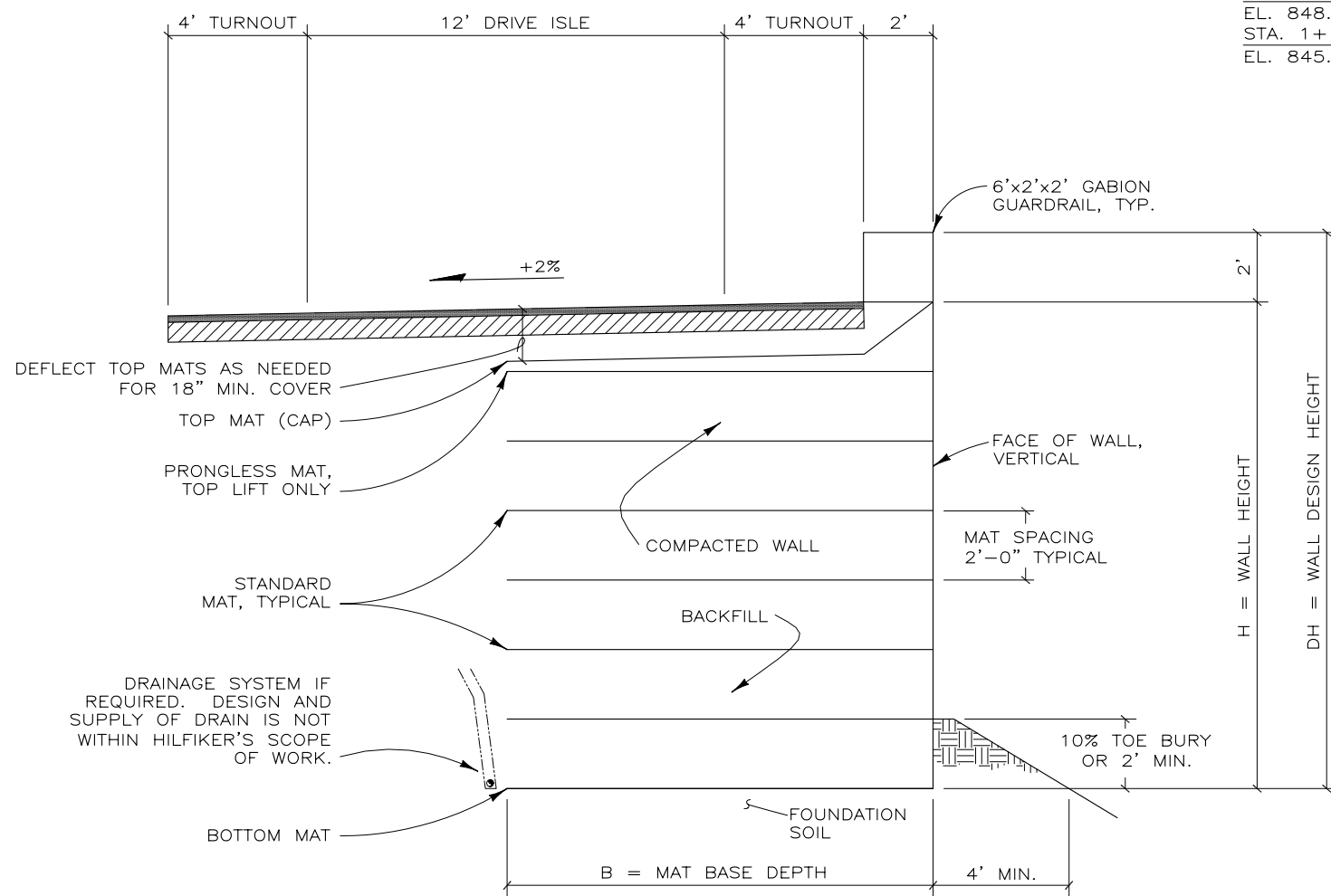
11 AUG 11

FOR BIDDING PURPOSES

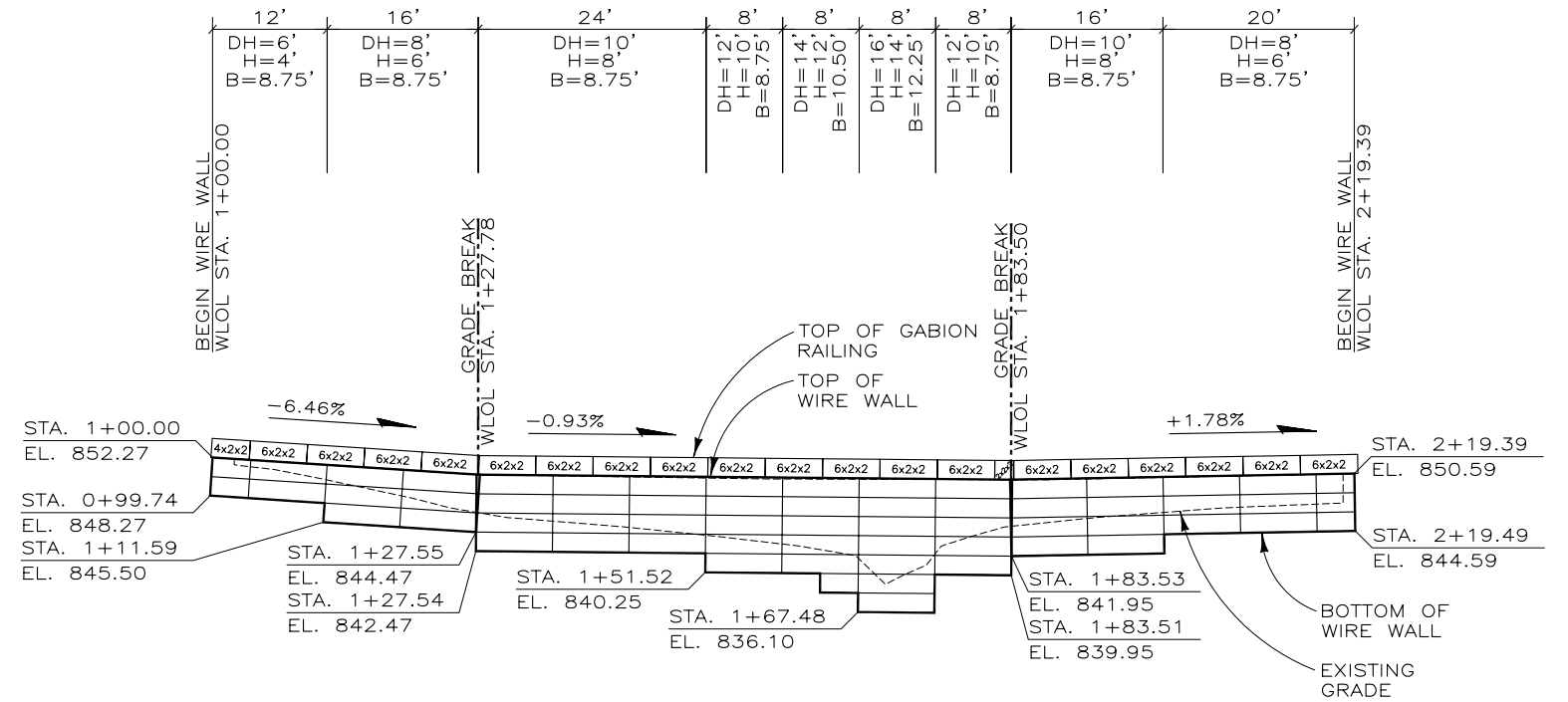
WELDED WIRE RETAINING WALL
CHALK HILL ROAD
HARTMAN/O'BRIEN RESIDENCE
HEALDSBURY, CALIFORNIA

TYP. SECTION & DEVELOPED ELEVATION

110630BW CHALK HILL ROAD



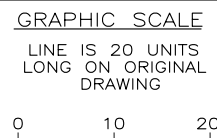
TYPICAL SECTION - WALL AT STA. 17+74.35
SCALE: 1" = 5'



DEVELOPED ELEVATION - WALL AT STA. 17+74.35
SCALE: 1" = 20' FRONT FACE

THIS DRAWING IS FURNISHED SOLELY FOR THE USE OF OR IN CONNECTION WITH THIS PROJECT AND THE PROPRIETARY INFORMATION SHOWN HEREON IS NOT TO BE TRANSMITTED TO ANY OTHER ORGANIZATION WITHOUT SPECIFIC AUTHORIZATION BY THE HILFIKER COMPANY. HILFIKER RETAINING WALLS ARE PROTECTED BY ONE OR MORE OF THE FOLLOWING PATENTS: 243,613; 243,697; 288,616; 4,117,686; 4,329,089; 4,324,508; 4,391,557; 4,505,621; 4,343,318; 4,661,023; 4,856,939; 4,929,125; 5,076,735; 5,647,695; 5,722,799; 5,733,072; 6,357,970B1; 6,874,975B2; 7,033,118B2; AND OTHERS. OTHER PATENTS PENDING (2008)

REV. NO.	DATE	BY	DESCRIPTION
1	11 AUG 11	LC	WALL AT STA. 17+74.35 ADDED TO DRAWINGS



PROJ. MGR.
HKH
ENGINEER
CADD BY
AMJ/LC

HILFIKER RETAINING WALLS

1902 Hilfiker Lane
Eureka, CA 95503-5711
TOLL-FREE 800.762.8962
PH 707.443.5093 FAX 707.443.2891
WEBSITE www.hilfiker.com E-MAIL info@hilfiker.com

DWG DATE
29 JUL 11
REVISION DATE
11 AUG 11
SCALE
NOTED

FOR BIDDING PURPOSES ONLY

WELDED WIRE RETAINING WALL
CHALK HILL ROAD
HARTMAN/O'BRIEN RESIDENCE
HEALDSBURY, CALIFORNIA

WALL STA. 17+74.35 ELEVATION & TYP. SECTION

PROJECT NO.
110630BW
SHEET
4
OF 4