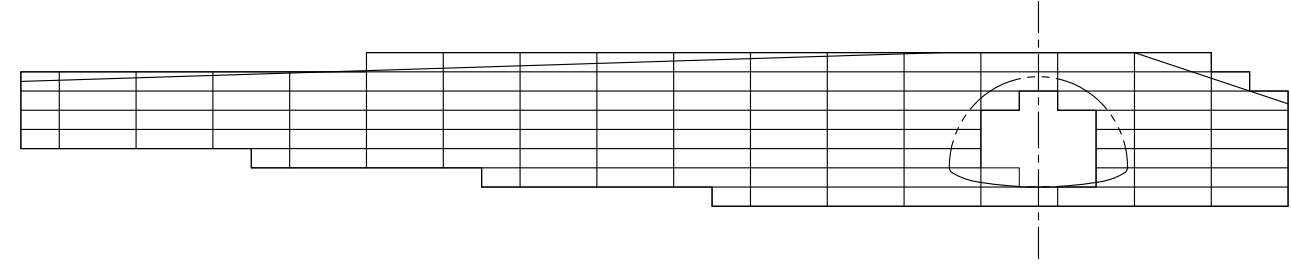
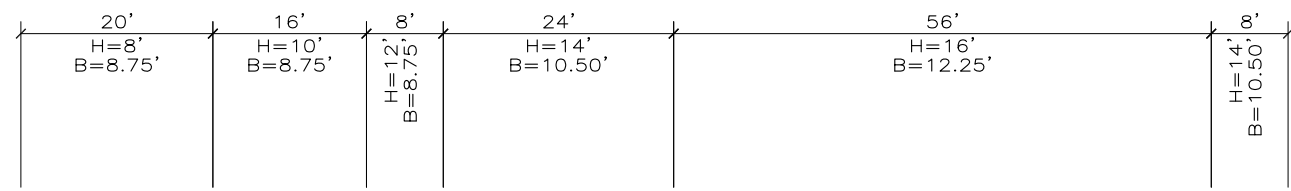
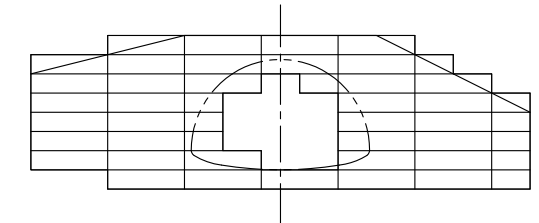
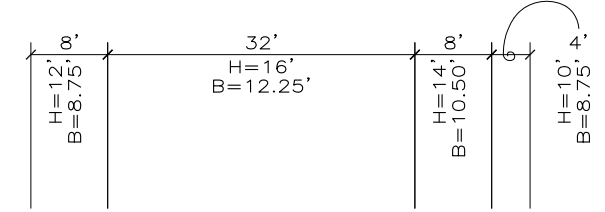


150409DW BOGARD ROAD EXTENSION EAST PHASE II



WALL 1 FACE AREA:	1,728 SQ. FT.
MINUS CULVERT AREA:	96 SQ. FT.
<b>TOTAL FACE AREA:</b>	<b>1,632 SQ. FT.</b>



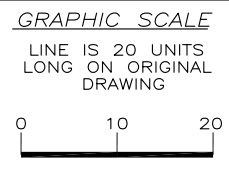
WALL 2 FACE AREA:	752 SQ. FT.
MINUS CULVERT AREA:	96 SQ. FT.
<b>TOTAL FACE AREA:</b>	<b>656 SQ. FT.</b>

150409DW BOGARD ROAD EXTENSION  
EAST PHASE II

WALL 1 FACE AREA:	1,632 SQ. FT.
WALL 2 FACE AREA:	656 SQ. FT.
<b>TOTAL FACE AREA:</b>	<b>2,288 SQ. FT.</b>

THIS DRAWING IS FURNISHED SOLELY FOR THE USE OF OR IN CONNECTION WITH THIS PROJECT AND THE PROPRIETARY INFORMATION SHOWN HEREON IS NOT TO BE TRANSMITTED TO ANY OTHER ORGANIZATION WITHOUT SPECIFIC AUTHORIZATION BY THE HILFIKER COMPANY. HILFIKER RETAINING WALLS ARE PROTECTED BY ONE OR MORE OF THE FOLLOWING PATENTS: 243,613; 243,697; 288,616; 4,117,686; 4,329,089; 4,324,506; 4,391,557; 4,505,621; 4,343,318; 4,661,023; 4,856,939; 4,929,125; 5,076,735; 5,647,695; 5,722,799; 5,733,072; 6,357,970B1; 6,874,975B2; 7,033,118B2; AND OTHERS. OTHER PATENTS PENDING (2008)

REV.NO.	DATE	BY	DESCRIPTION



PROJ. MGR.  
HH  
ENGINEER  
CADD BY  
AMJ

**HILFIKER RETAINING WALLS**

1902 Hilfiker Lane  
Eureka, CA 95503-5711  
TOLL-FREE 800.762.8962  
PH 707.443.5093 FAX 707.443.2891  
WEBSITE www.hilfiker.com E-MAIL Info@hilfiker.com

SINCE 1902 QUALITY PRODUCTS

DWG DATE  
22 APR 15  
REVISION DATE  
SCALE  
NOTED

FOR BIDDING PURPOSES ONLY  
WELDED WIRE WALL  
BOGARD ROAD EXTENSION EAST  
PHASE II  
CONTECH ALASKA  
HILFIKER RETAINING WALL VIEWS

PROJECT NO.  
150409DW  
SHEET  
1  
OF  
1