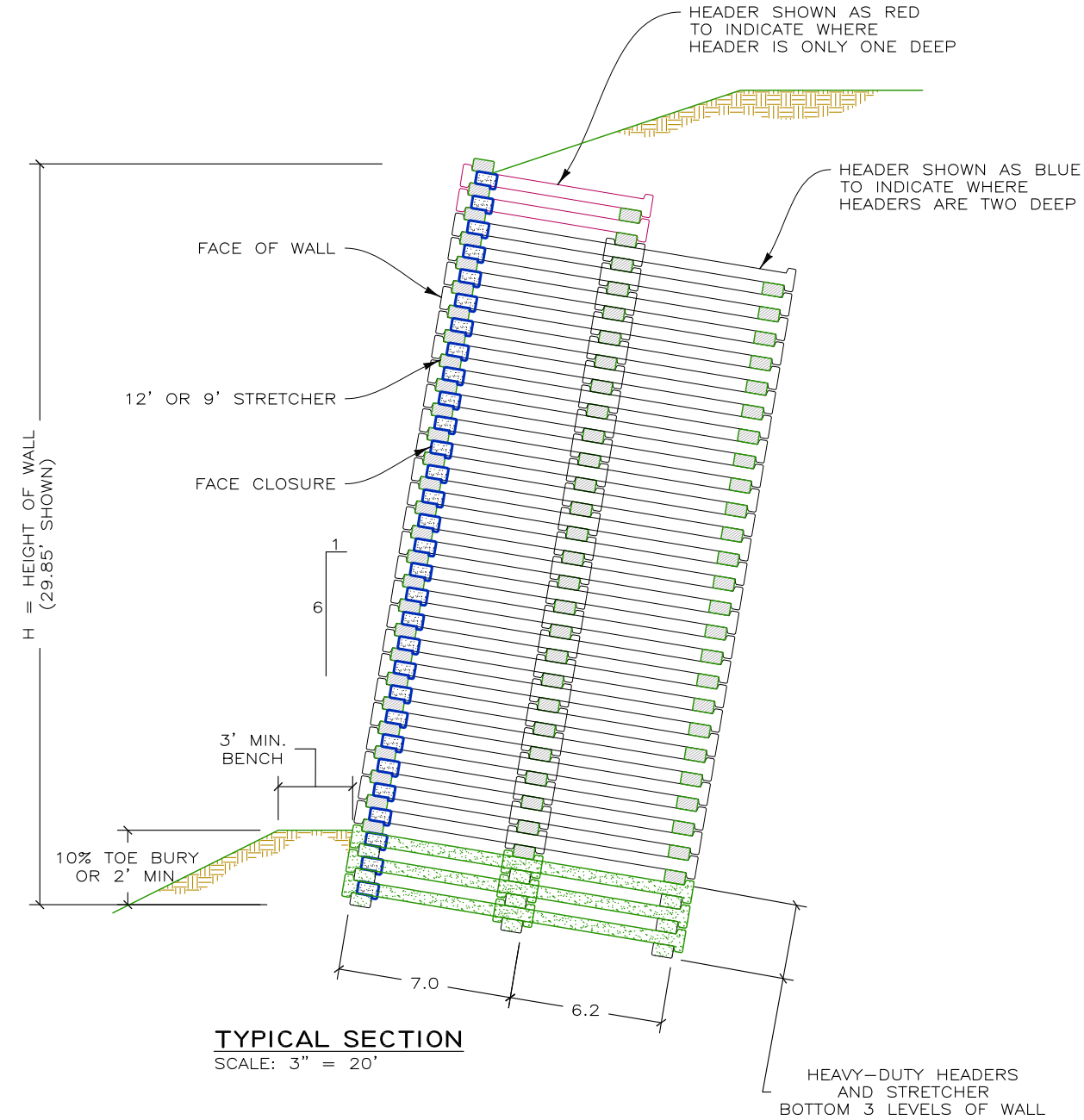


160929CC CALTRANS 01-OB5104



TYPICAL SECTION
SCALE: 3" = 20'

HILFIKER PROJECT-SPECIFIC NOTES:

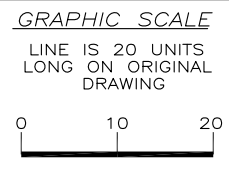
1. REFERENCE DRAWINGS: CALIFORNIA DEPT. OF TRANSPORTATION (CALTRANS) DRAWINGS APPROVED 2 MAY 2016. CONTRACT NO. 01-OB5104, PROJECT NO. 0112000134. SHEET 6 OF 40.
2. BLACK AND WHITE REPRODUCTION OF THIS COLOR ORIGINAL MAY REDUCE ITS EFFECTIVENESS AND LEAD TO INCORRECT INTERPRETATION.

CALTRANS DESIGN NOTES

4. CONCRETE TO CONCRETE BEARING SURFACES SHALL BE FINISHED TO A SMOOTH PLANE. THE GAP BETWEEN BEARING SURFACES SHALL NOT EXCEED 1/8 INCH. WHERE A GAP OF 1/8 TO 1/4 INCH EXISTS, A 1/8 INCH PAD OF ASPHALT FELT OF SHEET NEOPRENE SHALL BE PLACED BETWEEN THE BEARING SURFACES. FOR WALL TYPES B AND C, A 1/8 INCH ASPHALT FELT PAD OR SHEET NEOPRENE SHALL BE PLACED BETWEEN ALL CONCRETE BEARING SURFACES BELOW THE 29'-10" LEVEL.
5. ALL MEMBERS MAY BE MANUFACTURED TO DIMENSIONS 1/8 INCH GREATER IN THICKNESS AND STRETCHERS 1/2 INCH LESS IN LENGTH.
6. WHERE AN OPENING IS SPECIFIED IN THE FACE OF A WALL, SPECIAL LENGTH STRETCHERS AND ADDITIONAL HEADERS MAY BE REQUIRED.
7. FOR NON-TANGENT WALL ALIGNMENT, SPECIAL LENGTH STRETCHERS MAY BE REQUIRED.
8. FOR NON-TANGENT WALL ALIGNMENT AND AT LOCATIONS WHERE FILLER BLOCKS ARE REQUIRED, SPECIAL LENGTH FRONT FACE CLOSURE MEMBERS MAY BE REQUIRED.
9. THE THICKNESS OF THE LOWEST STEP FOR EACH WALL TYPE SHALL NOT BE LESS THAN THE DIMENSION SHOWN ON THESE PLANS.
10. USE "FRONT FACE CLOSURE MEMBER" ONLY WHEN SPECIFIED ON PROJECT PLANS OR IN THE SPECIAL PROVISIONS.
11. ALL STRETCHERS ARE 12'-0" EXCEPT AS NOTED.
12. PLACE 2 FILLER BLOCKS MIDSPAN BETWEEN STRETCHERS IN THE BOTTOM 2 LEVELS OF WALLS 9' HIGH AND HIGHER.

THIS DRAWING IS FURNISHED SOLELY FOR THE USE OF OR IN CONNECTION WITH THIS PROJECT AND THE PROPRIETARY INFORMATION SHOWN HEREON IS NOT TO BE TRANSMITTED TO ANY OTHER ORGANIZATION WITHOUT SPECIFIC AUTHORIZATION BY THE HILFIKER COMPANY. HILFIKER RETAINING WALLS ARE PROTECTED BY ONE OR MORE OF THE FOLLOWING PATENTS: 243,613; 243,697; 288,616; 4,117,686; 4,329,089; 4,324,508; 4,391,557; 4,505,621; 4,343,318; 4,661,023; 4,856,939; 4,929,125; 5,076,735; 5,647,695; 5,722,799; 5,733,072; 6,357,970B1; 6,874,975B2; 7,033,118B2; AND OTHERS. OTHER PATENTS PENDING (2008)

REV.NO.	DATE	BY	DESCRIPTION



PROJ. MGR.
HKH
ENGINEER
CADD BY
AMJ

HILFIKER RETAINING WALLS

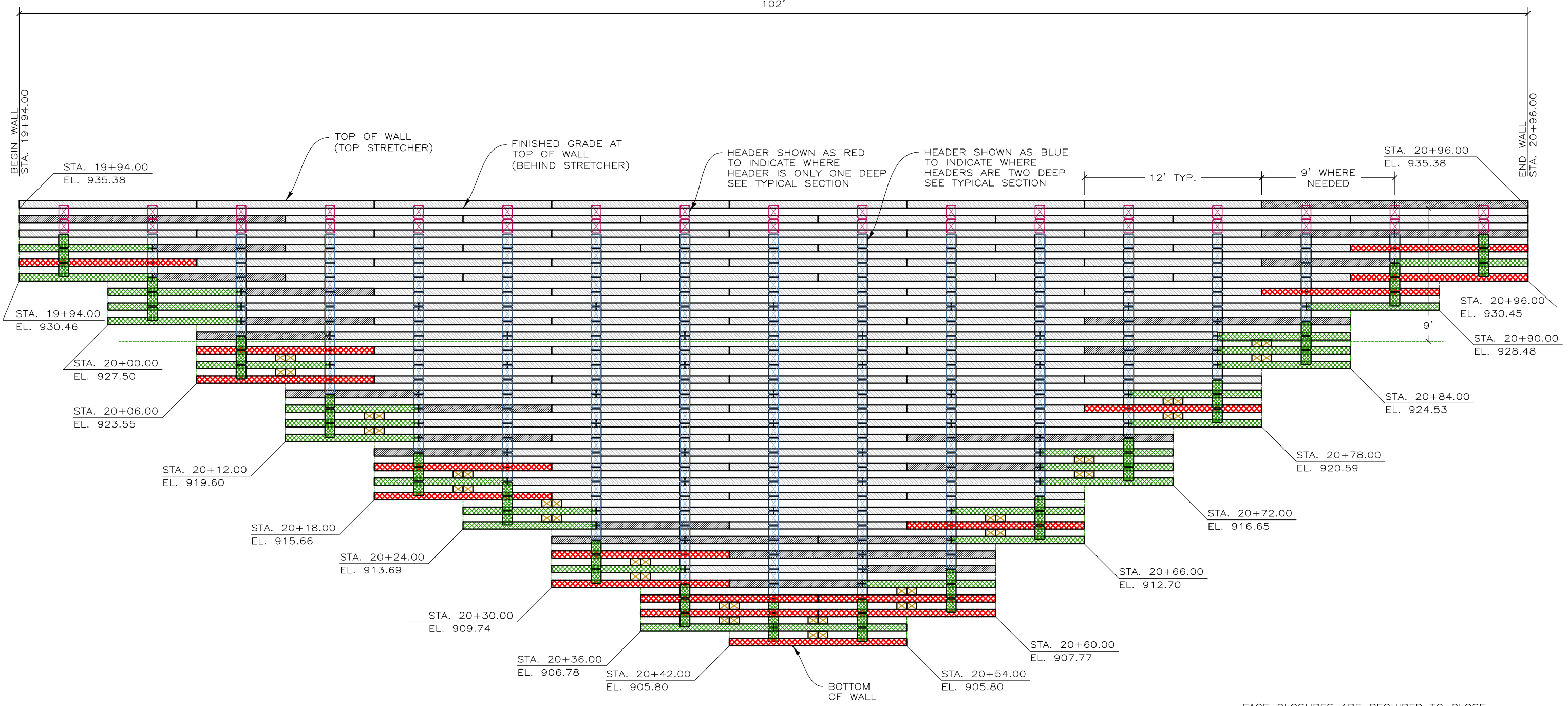
1902 Hilfiker Lane
Eureka, CA 95503-5711
TOLL-FREE 800.762.8962
PH 707.443.5093 FAX 707.443.2891
WEBSITE www.hilfiker.com E-MAIL info@hilfiker.com

DWG DATE
10 MAR 17
REVISION DATE
SCALE
NOTED

SHOP DRAWING
CRIBWALL
CALTRANS 01-OB5104
PROJECT ID: 0112000134
HWY 101 near LEGGET, MENDOCINO COUNTY, CALIFORNIA
DETAILS AND NOTES

PROJECT NO.
160929CC
SHEET
1
OF 3

102'



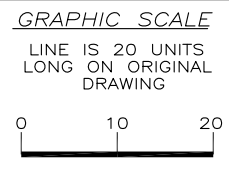
DEVELOPED ELEVATION
SCALE: 3" = 20'

FACE CLOSURES ARE REQUIRED TO CLOSE THE SPACES BETWEEN STRETCHERS ON THE TOTAL FACE OF WALL AS SHOWN IN TYPICAL SECTION.
FACE CLOSURES ARE NOT SHOWN ON THE DEVELOPED ELEVATION FOR CLARITY ONLY.

160929CC CALTRANS 01-OB5104

THIS DRAWING IS FURNISHED SOLELY FOR THE USE OF OR IN CONNECTION WITH THIS PROJECT AND THE PROPRIETARY INFORMATION SHOWN HEREON IS NOT TO BE TRANSMITTED TO ANY OTHER ORGANIZATION WITHOUT SPECIFIC AUTHORIZATION BY THE HILFIKER COMPANY. HILFIKER RETAINING WALLS ARE PROTECTED BY ONE OR MORE OF THE FOLLOWING PATENTS: 243,613; 243,697; 288,616; 4,117,686; 4,329,089; 4,324,508; 4,391,557; 4,505,621; 4,343,318; 4,661,023; 4,856,939; 4,929,125; 5,076,735; 5,647,695; 5,722,799; 5,733,072; 6,357,970B1; 6,874,975B2; 7,033,118B2; AND OTHERS. OTHER PATENTS PENDING (2008)

REV.NO.	DATE	BY	DESCRIPTION



PROJ. MGR.
HKH
ENGINEER
CADD BY
AMJ

HILFIKER RETAINING WALLS

1902 Hilfiker Lane
Eureka, CA 95503-5711
TOLL-FREE 800.762.8962
PH 707.443.5093 FAX 707.443.2891
WEBSITE www.hilfiker.com E-MAIL info@hilfiker.com

SINCE 1902
QUALITY PRODUCTS

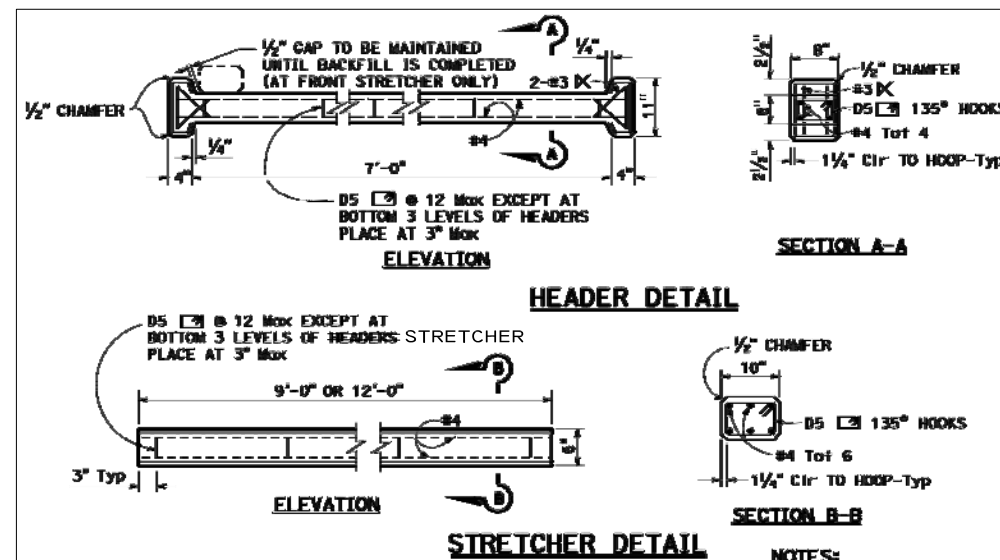
DWG DATE
10 MAR 17
REVISION DATE
SCALE
NOTED

SHOP DRAWING
CRIBWALL
CALTRANS 01-OB5104
PROJECT ID: 0112000134
HWY 101 near LEGGET, MENDOCINO COUNTY, CALIFORNIA
DEVELOPED ELEVATION

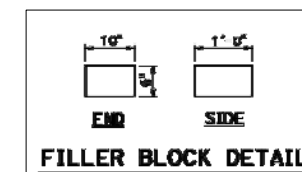
PROJECT NO.
160929CC
SHEET
2
OF 3

MATERIALS KEY

RED HEADER (SINGLE DEEP)	
BLUE HEADER (TWO DEEP)	
HEAVY-DUTY HEADER	HD
12' STRETCHER	
HEAVY-DUTY 12' STRETCHER	HD
9' STRETCHER	
HEAVY-DUTY 9' STRETCHER	HD
FACE CLOSURE	
BLOCK	



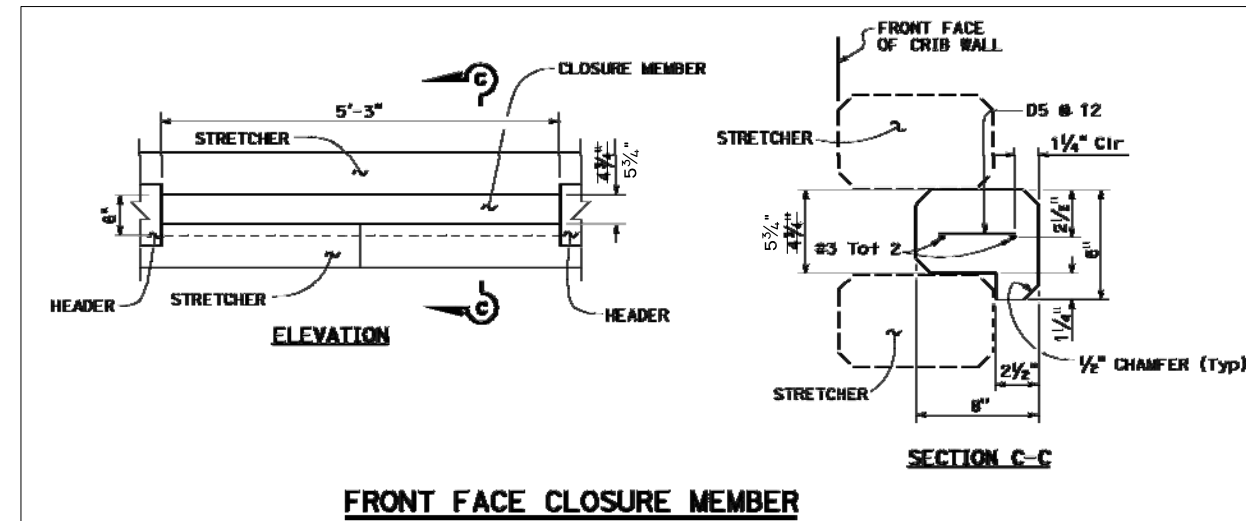
CALTRANS DETAIL FOR HEADERS AND STRETCHERS
NOT TO SCALE



CALTRANS DETAIL FOR FILLER BLOCK
NOT TO SCALE

SUPPLIED QUANTITIES

STANDARD 7' HEADERS:	476
HEAVY-DUTY HEADERS:	102
TOTAL HEADERS:	578
12' STANDARD STRETCHERS:	275
12' HEAVY-DUTY STRETCHERS:	51
TOTAL 12' STRETCHERS:	326
9' STANDARD STRETCHERS:	82
9' HEAVY-DUTY STRETCHERS:	84
TOTAL 9' STRETCHERS:	166
5.25' FACE CLOSURE:	252
2.5' FACE CLOSURE:	60
1.875' FACE CLOSURE:	48
BLOCKS:	144



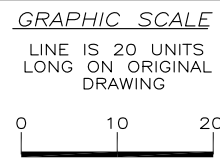
CALTRANS DETAIL FOR FRONT CLOSURE MEMBER
NOT TO SCALE

NOTE: THE FACE CLOSURES ARE 5.25' (5'-3") LONG, EXCEPT AT THE END OF WALL WHERE THEY ARE 2.5' (2'-6") LONG.
WHERE BLOCKS ARE REQUIRED, THE FACE CLOSURES ARE 1.875' (1'-10.5") LONG.

160929CC CALTRANS 01-OB5104

THIS DRAWING IS FURNISHED SOLELY FOR THE USE OF OR IN CONNECTION WITH THIS PROJECT AND THE PROPRIETARY INFORMATION SHOWN HEREON IS NOT TO BE TRANSMITTED TO ANY OTHER ORGANIZATION WITHOUT SPECIFIC AUTHORIZATION BY THE HILFIKER COMPANY. HILFIKER RETAINING WALLS ARE PROTECTED BY ONE OR MORE OF THE FOLLOWING PATENTS: 243,613; 243,697; 288,616; 4,117,686; 4,329,089; 4,324,508; 4,391,557; 4,505,621; 4,343,318; 4,661,023; 4,856,939; 4,929,125; 5,076,735; 5,647,695; 5,722,799; 5,733,072; 6,357,970B1; 6,874,975B2; 7,033,118B2; AND OTHERS. OTHER PATENTS PENDING (2008)

REV.NO.	DATE	BY	DESCRIPTION



PROJ. MGR.
HKH
ENGINEER
CADD BY
AMJ

HILFIKER RETAINING WALLS

1902 Hilfiker Lane
Eureka, CA 95503-5711
TOLL-FREE 800.762.8962
PH 707.443.5093 FAX 707.443.2891
WEB SITE www.hilfiker.com E-MAIL info@hilfiker.com

DWG DATE
10 MAR 17
REVISION DATE
SCALE
NOTED

SHOP DRAWING
CRIBWALL
CALTRANS 01-OB5104
PROJECT ID: 0112000134
HWY 101 near LEGGET, MENDOCINO COUNTY, CALIFORNIA
TYPICAL SECTION AND CALTRANS DETAILS

PROJECT NO.
160929CC
SHEET
3
OF 3