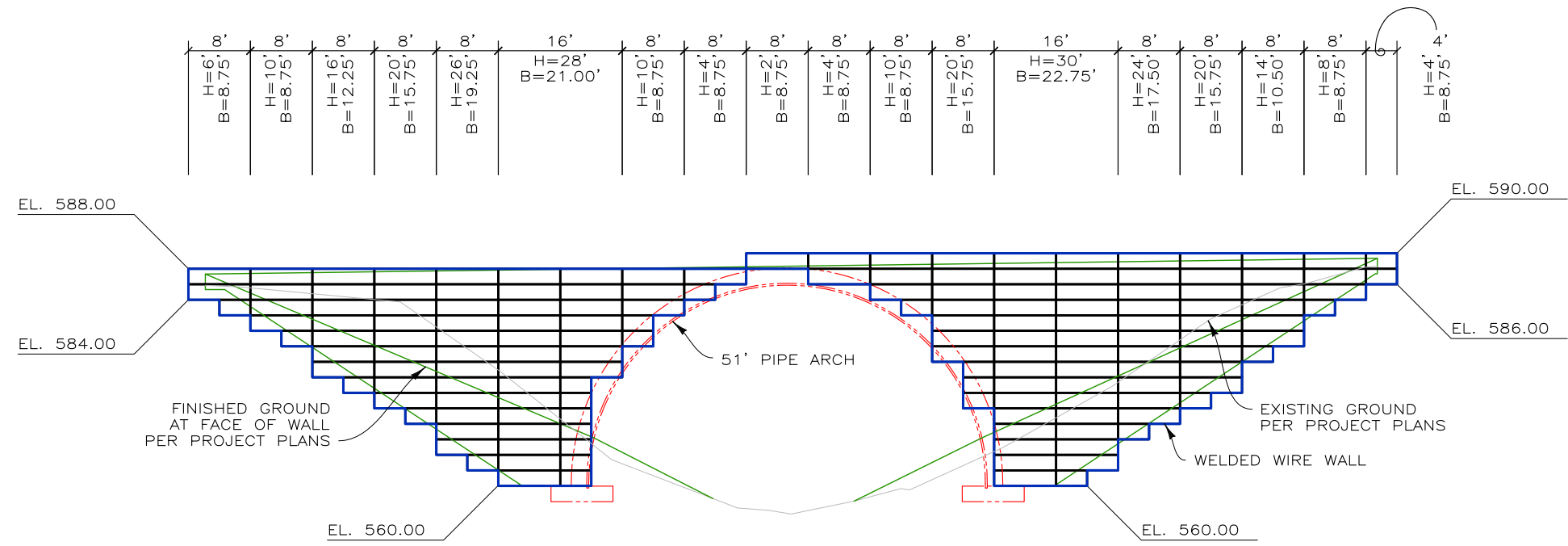


161108BW PIERCE COUNTY FOOTHILL TRAIL SWITCHBACK BRIDGE



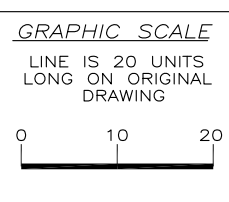
DEVELOPED ELEVATION - INLET WALL
SCALE: 1" = 20' (FRONT FACE)

ESTIMATED QUANTITIES:

INLET WWW FACE AREA:	2,304 SQ. FT.
OUTLET WWW FACE AREA:	3,296 SQ. FT.
OUTLET WIRETRUSS FACE AREA:	240 SQ. FT.
TOTAL FACE AREA:	5,840 SQ. FT.

THIS DRAWING IS FURNISHED SOLELY FOR THE USE OF OR IN CONNECTION WITH THIS PROJECT AND THE PROPRIETARY INFORMATION SHOWN HEREON IS NOT TO BE TRANSMITTED TO ANY OTHER ORGANIZATION WITHOUT SPECIFIC AUTHORIZATION BY THE HILFIKER COMPANY. HILFIKER RETAINING WALLS ARE PROTECTED BY ONE OR MORE OF THE FOLLOWING PATENTS: 243,613; 243,697; 288,616; 4,117,686; 4,329,089; 4,324,508; 4,391,557; 4,505,621; 4,343,318; 4,661,023; 4,856,939; 4,929,125; 5,076,735; 5,647,695; 5,722,799; 5,733,072; 6,357,970B1; 6,874,975B2; 7,033,118B2; AND OTHERS. OTHER PATENTS PENDING (2008)

REV.NO.	DATE	BY	DESCRIPTION
1	26 MAY 17	DH	UPDATE LAYOUT OF BOTH WALLS AND SECTION BASED ON NEW PROJECT PLANS



PROJ. MGR.	BH
ENGINEER	
CADD BY	DH

HILFIKER RETAINING WALLS

1902 Hilfiker Lane
Eureka, CA 95503-5711
TOLL-FREE 800.762.8962
PH 707.443.5093 FAX 707.443.2891
WEBSITE www.hilfiker.com E-MAIL Info@hilfiker.com

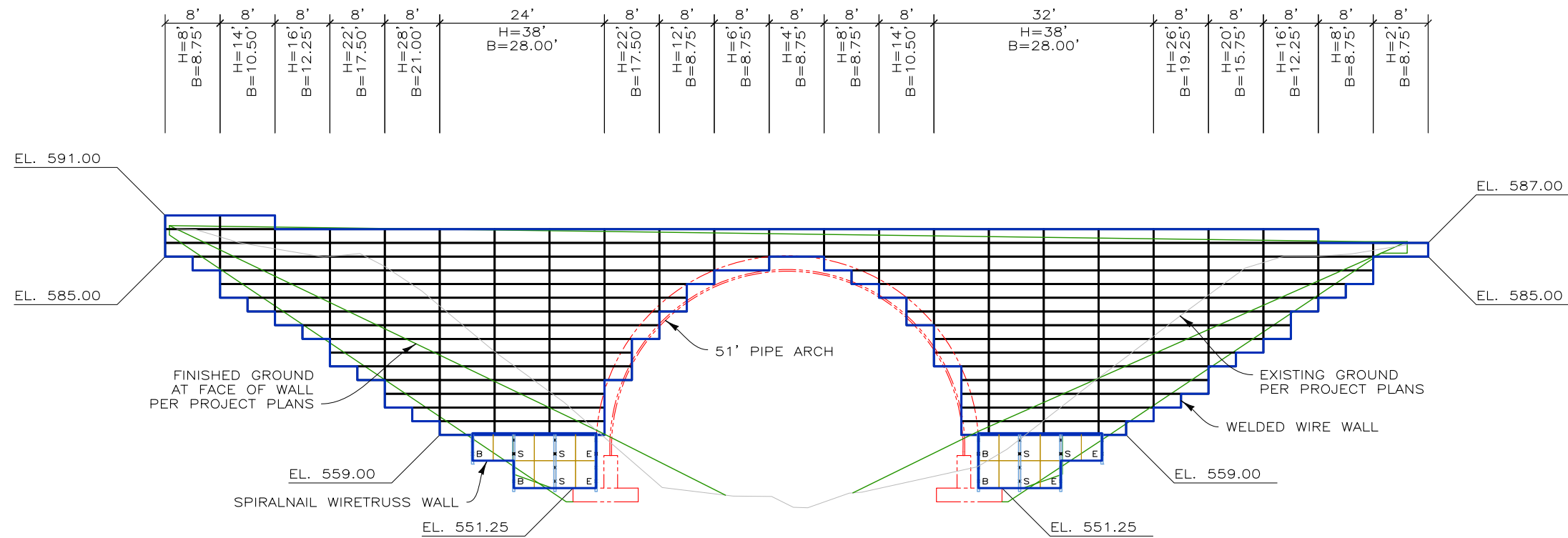
SINCE 1902
QUALITY PRODUCTS

DWG DATE	17 NOV 16
REVISION DATE	26 MAY 17
SCALE	NOTED

FOR BIDDING PURPOSES ONLY	
WELDED WIRE WALL	
PIERCE COUNTY FOOTHILL TRAIL SWITCHBACK BRIDGE	
PIERCE COUNTY PUBLIC WORKS	PIERCE COUNTY, WA
DEVELOPED ELEVATION-INLET	

PROJECT NO.	161108BW
SHEET	1
OF	3

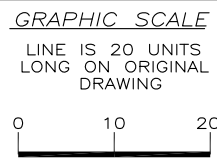
161108BW PIERCE COUNTY FOOTHILL TRAIL SWITCHBACK BRIDGE



DEVELOPED ELEVATION - OUTLET WALL
SCALE: 1" = 20'
(BACK FACE)

THIS DRAWING IS FURNISHED SOLELY FOR THE USE OF OR IN CONNECTION WITH THIS PROJECT AND THE PROPRIETARY INFORMATION SHOWN HEREON IS NOT TO BE TRANSMITTED TO ANY OTHER ORGANIZATION WITHOUT SPECIFIC AUTHORIZATION BY THE HILFIKER COMPANY. HILFIKER RETAINING WALLS ARE PROTECTED BY ONE OR MORE OF THE FOLLOWING PATENTS: 243,613; 243,697; 288,616; 4,117,686; 4,329,089; 4,324,508; 4,391,557; 4,505,621; 4,343,318; 4,661,023; 4,856,939; 4,929,125; 5,076,735; 5,647,695; 5,722,799; 5,733,072; 6,357,970B1; 6,874,975B2; 7,033,118B2; AND OTHERS. OTHER PATENTS PENDING (2008)

REV.NO.	DATE	BY	DESCRIPTION
1	26 MAY 17	DH	UPDATE LAYOUT OF BOTH WALLS AND SECTION BASED ON NEW PROJECT PLANS



PROJ. MGR.
BH
ENGINEER
CADD BY
DH

HILFIKER RETAINING WALLS

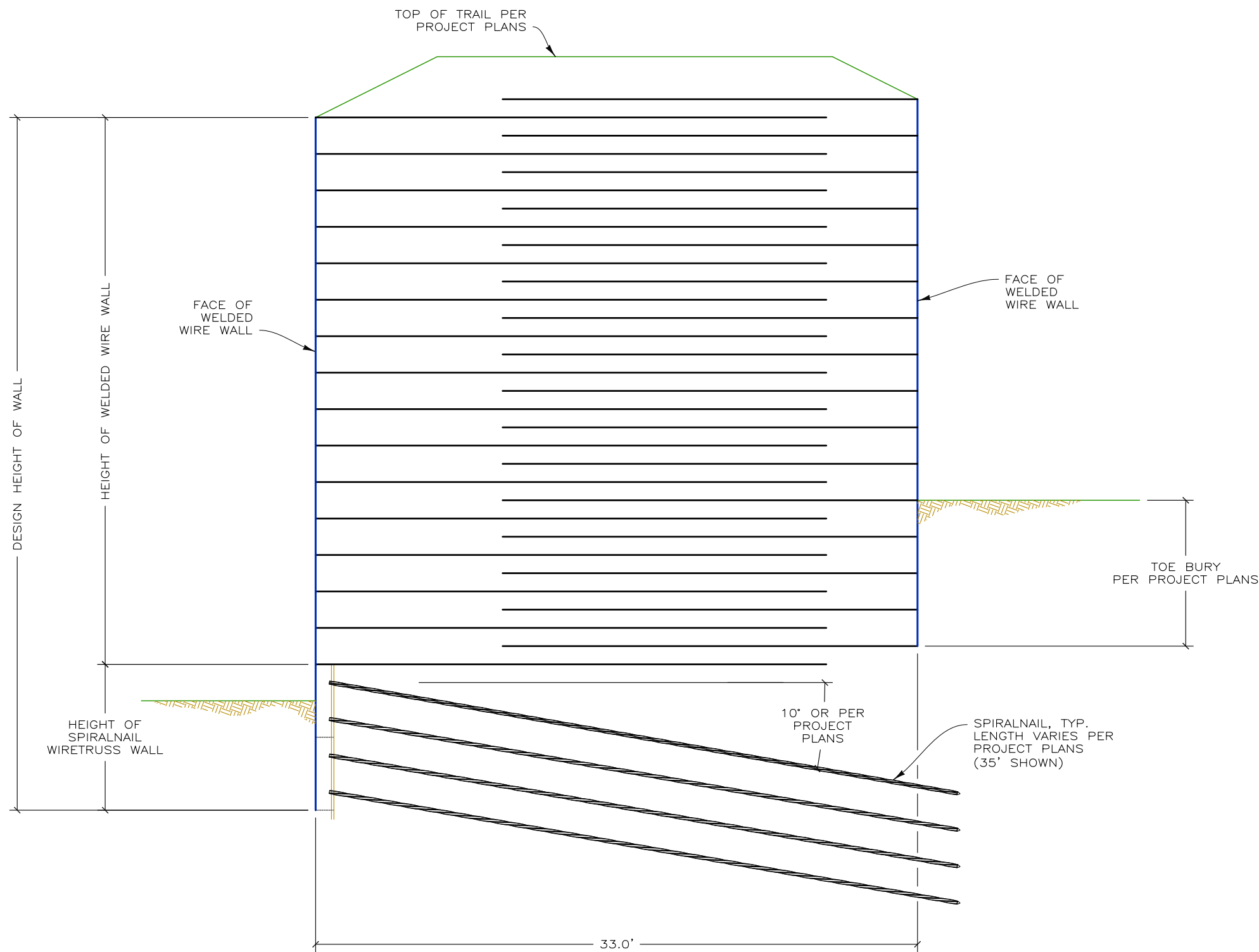
1902 Hilfiker Lane
Eureka, CA 95503-5711
TOLL-FREE 800.762.8962
PH 707.443.5093 FAX 707.443.2891
WEBSITE www.hilfiker.com E-MAIL Info@hilfiker.com

DWG DATE
17 NOV 16
REVISION DATE
26 MAY 17
SCALE
NOTED

FOR BIDDING PURPOSES ONLY
WELDED WIRE WALL
PIERCE COUNTY FOOTHILL TRAIL SWITCHBACK BRIDGE
PIERCE COUNTY PUBLIC WORKS PIERCE COUNTY, WA
DEVELOPED ELEVATION-OUTLET

PROJECT NO.
161108BW
SHEET
2
OF 3

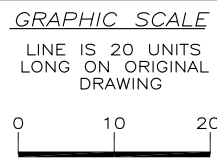
161108BW PIERCE COUNTY FOOTHILL TRAIL SWITCHBACK BRIDGE



TYPICAL SECTION - BOTH WALLS
SCALE: 3"=20'

THIS DRAWING IS FURNISHED SOLELY FOR THE USE OF OR IN CONNECTION WITH THIS PROJECT AND THE PROPRIETARY INFORMATION SHOWN HEREON IS NOT TO BE TRANSMITTED TO ANY OTHER ORGANIZATION WITHOUT SPECIFIC AUTHORIZATION BY THE HILFIKER COMPANY. HILFIKER RETAINING WALLS ARE PROTECTED BY ONE OR MORE OF THE FOLLOWING PATENTS: 243,613; 243,697; 288,616; 4,117,686; 4,329,089; 4,324,508; 4,391,557; 4,505,621; 4,343,318; 4,661,023; 4,856,939; 4,929,125; 5,076,735; 5,647,695; 5,722,799; 5,733,072; 6,357,970B1; 6,874,975B2; 7,033,118B2; AND OTHERS. OTHER PATENTS PENDING (2008)

REV.NO.	DATE	BY	DESCRIPTION
1	26 MAY 17	DH	UPDATE LAYOUT OF BOTH WALLS AND SECTION BASED ON NEW PROJECT PLANS



PROJ. MGR.
BH
ENGINEER
CADD BY
DH

HILFIKER RETAINING WALLS

1902 Hilfiker Lane
Eureka, CA 95503-5711
TOLL-FREE 800.762.8962
PH 707.443.5093 FAX 707.443.2891
WEB SITE www.hilfiker.com E-MAIL Info@hilfiker.com

DWG DATE
17 NOV 16
REVISION DATE
26 MAY 17
SCALE
NOTED

FOR BIDDING PURPOSES ONLY

WELDED WIRE WALL
PIERCE COUNTY FOOTHILL TRAIL SWITCHBACK BRIDGE
PIERCE COUNTY PUBLIC WORKS PIERCE COUNTY, WA

TYPICAL SECTION

PROJECT NO.
161108BW
SHEET
3
OF 3