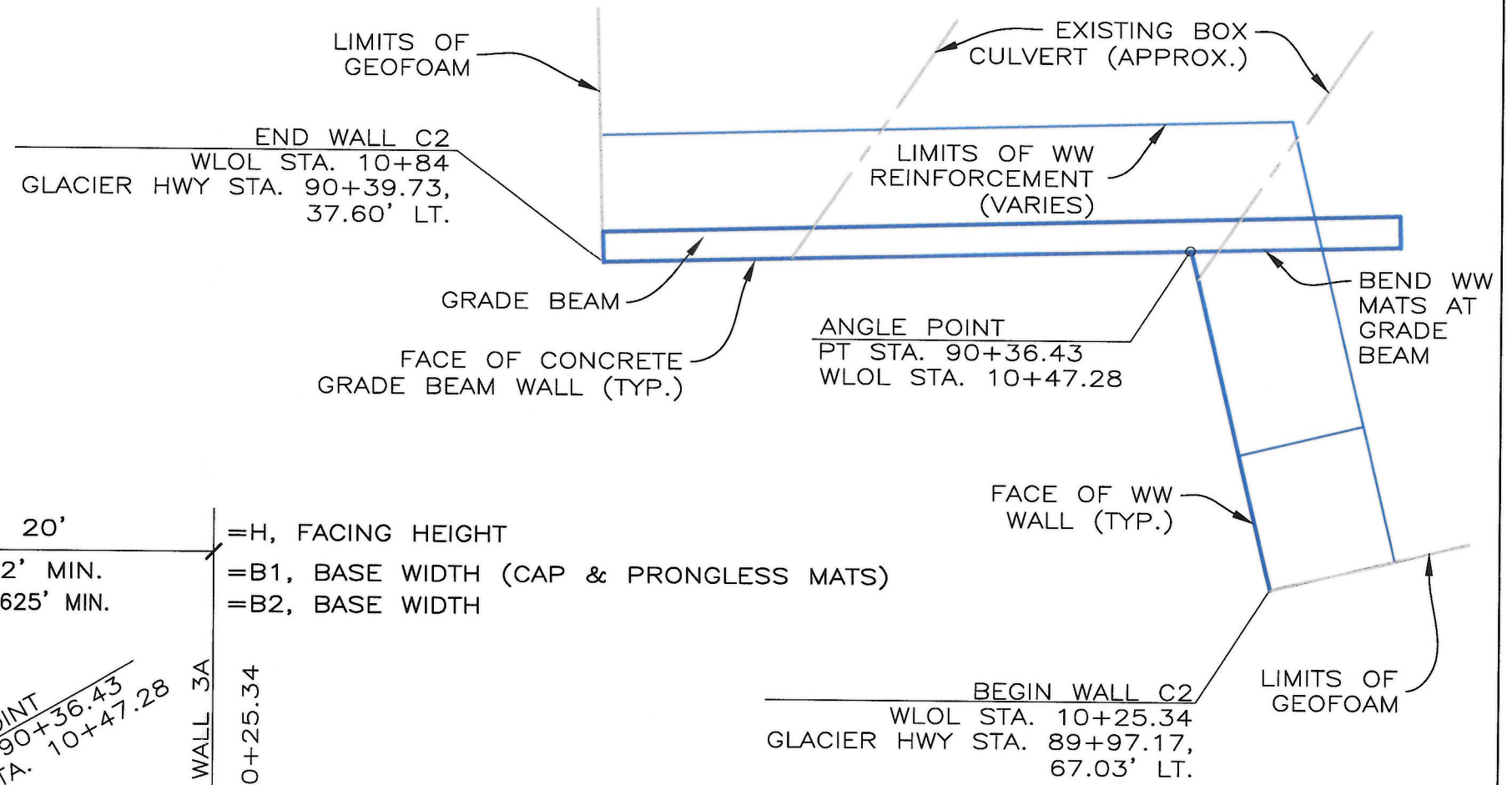


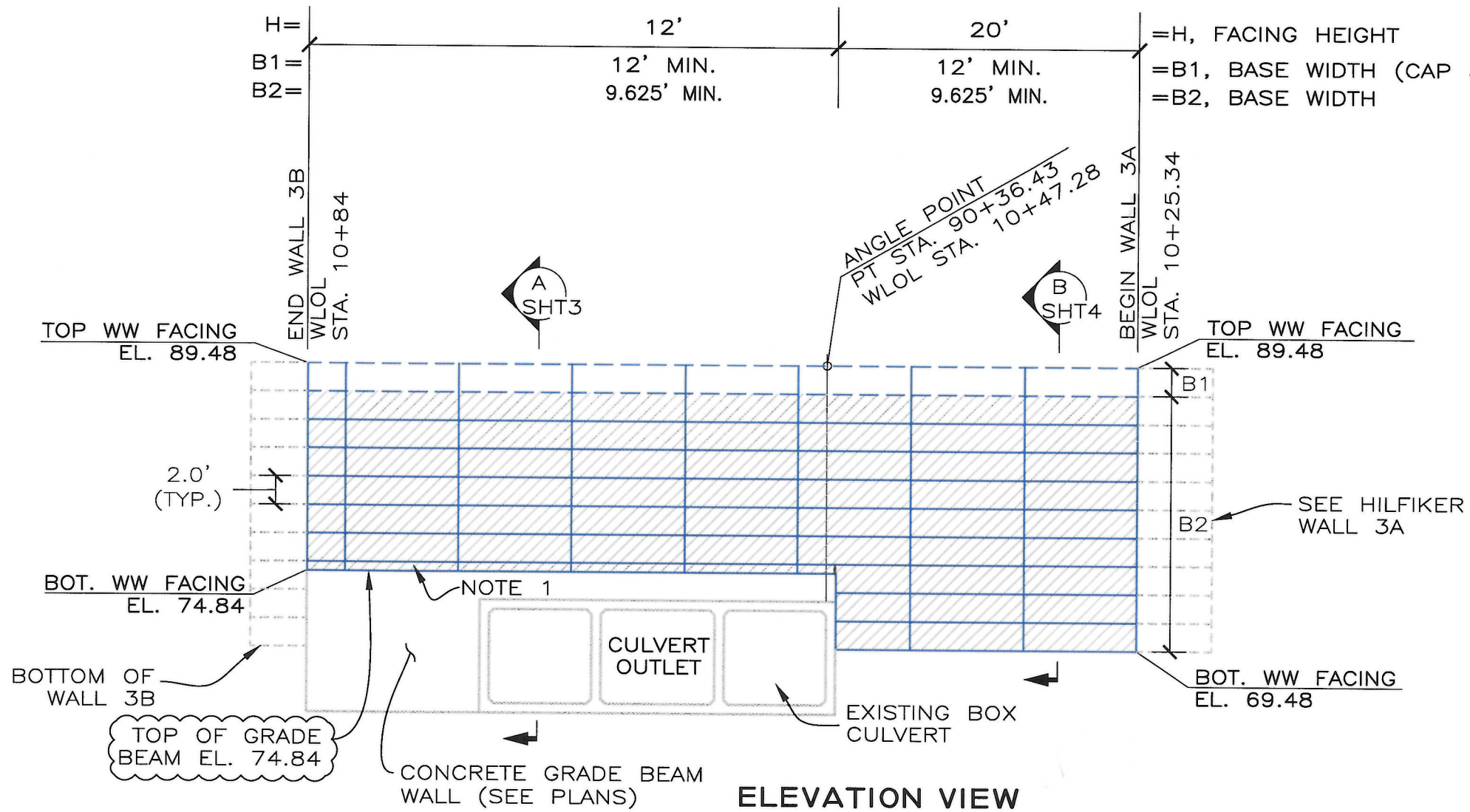
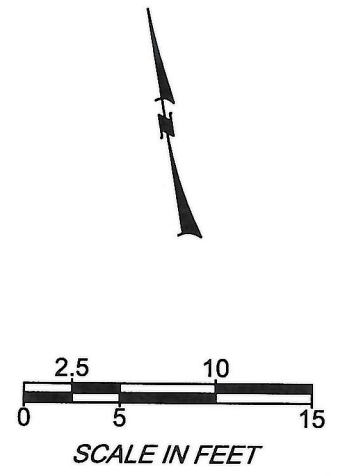
**NOTE 1:**

TRIM BOTTOM MAT SUCH THAT VERTICLE PRONGS EXTEND INTO OVERLYING MAT. ALTERNATIVELY, CAST THE GRADE BEAM SUCH THAT THE TOP ELEVATION IS 74.84 FEET.

SGC



**PLAN VIEW**  
GRAPHIC SCALE



**ELEVATION VIEW**  
**WELDED WIRE FACING (FRONT FACE)**  
GRAPHIC SCALE

02955.1 Glacier Hwy MSE Walls Prepared 7-31-2017.dwg

7/31/2017 3:19 PM

THIS DRAWING IS FURNISHED SOLELY FOR THE USE OF OR IN CONNECTION WITH THIS PROJECT AND THE PROPRIETARY INFORMATION SHOWN HEREON IS NOT TO BE TRANSMITTED TO ANY OTHER ORGANIZATION WITHOUT SPECIFIC AUTHORIZATION BY THE HILFIKER COMPANY. HILFIKER RETAINING WALLS ARE PROTECTED BY ONE OR MORE OF THE FOLLOWING PATENTS: 243,613; 243,697; 288,616; 4,117,698; 4,329,089; 4,324,508; 4,391,557; 4,505,821; 4,343,318; 4,881,023; 4,856,839; 4,928,125; 5,076,735; 5,847,895; 5,722,799; 5,733,072; 6,357,970B1; 6,874,975B2; 7,033,118B2; AND OTHERS. OTHER PATENTS PENDING (2008)

REV.	DATE	BY	DESCRIPTION

CADD:  
HWR

DESIGNED:  
HWR

CHECKED:  
SGC

**HILFIKER RETAINING WALLS**

1902 Hilfiker Lane  
Eureka, CA 95503-5711  
TOLL-FREE 800.762.8962  
PH 707.443.5093 FAX 707.443.2891  
WEB SITE www.hilfiker.com E-MAIL info@hilfiker.com

**HW**

SINCE 1902

**AMERICAN GEO TECHNICS**

American Geotechnics  
5260 Chinden Blvd.  
Boise, ID 83714  
(208) 658-8700  
Fax: (208) 658-8703

WW FACING PLAN & ELEVATION	DWG DATE: 27 JUL 2017
FACING	HRW NO.:
GLACIER HWY RECONSTRUCTION	161129BW
FRITZ COVE RD TO SEAVIEW	SHEET
AK DOT	1
JUNEAU, AK	OF 7

STATE OF ALASKA

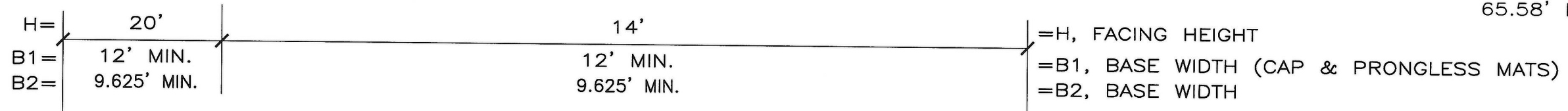
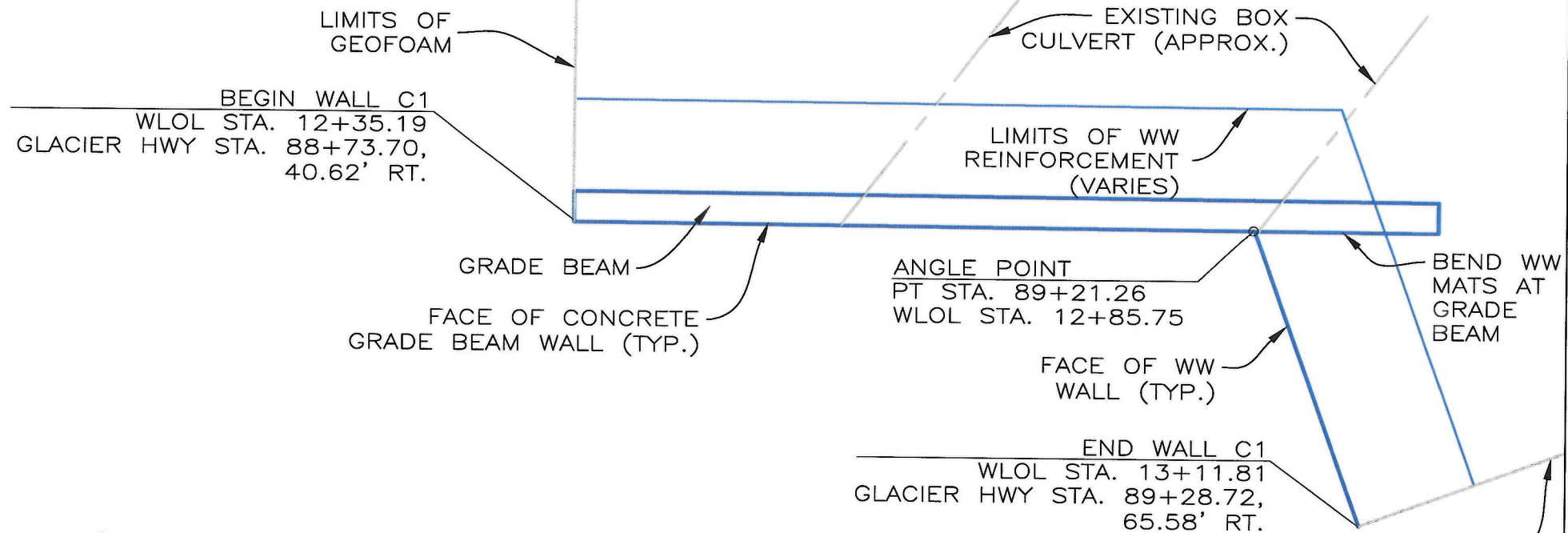
8-16-17

49TH

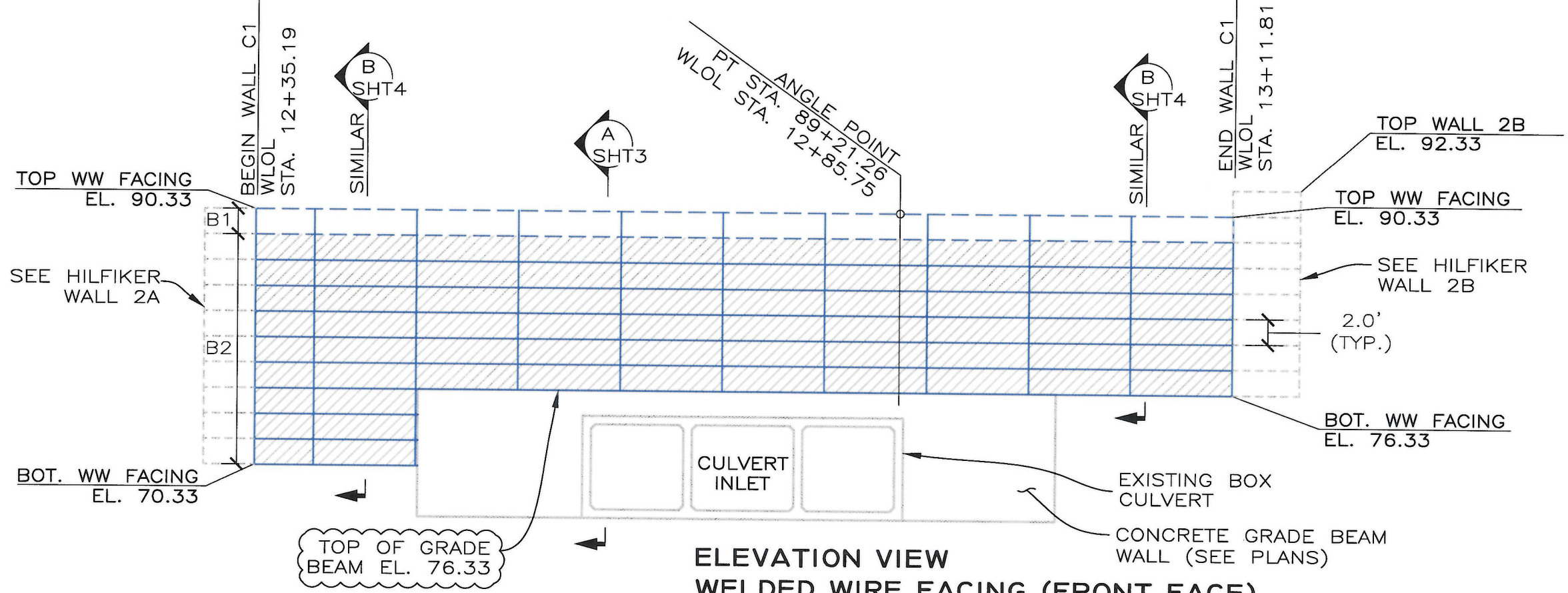
STANLEY G. CRAWFORTH

No. CE13063

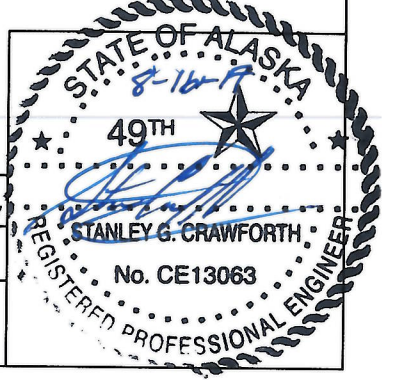
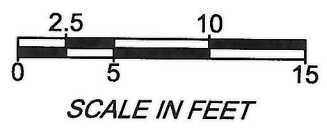
REGISTERED PROFESSIONAL ENGINEER



**PLAN VIEW**  
GRAPHIC SCALE



**ELEVATION VIEW**  
**WELDED WIRE FACING (FRONT FACE)**  
GRAPHIC SCALE



REV.	DATE	BY	DESCRIPTION	CADD:
				HWR
				DESIGNED: HWR
				CHECKED: SGC

**HILFIKER RETAINING WALLS**  

 1902 Hilfiker Lane  
 Eureka, CA 95503-5711  
 TOLL-FREE 800.762.8962  
 PH 707.443.5093 FAX 707.443.2891  
 WEB SITE www.hilfiker.com E-MAIL info@hilfiker.com

**AMERICAN GEO TECHNICS**  

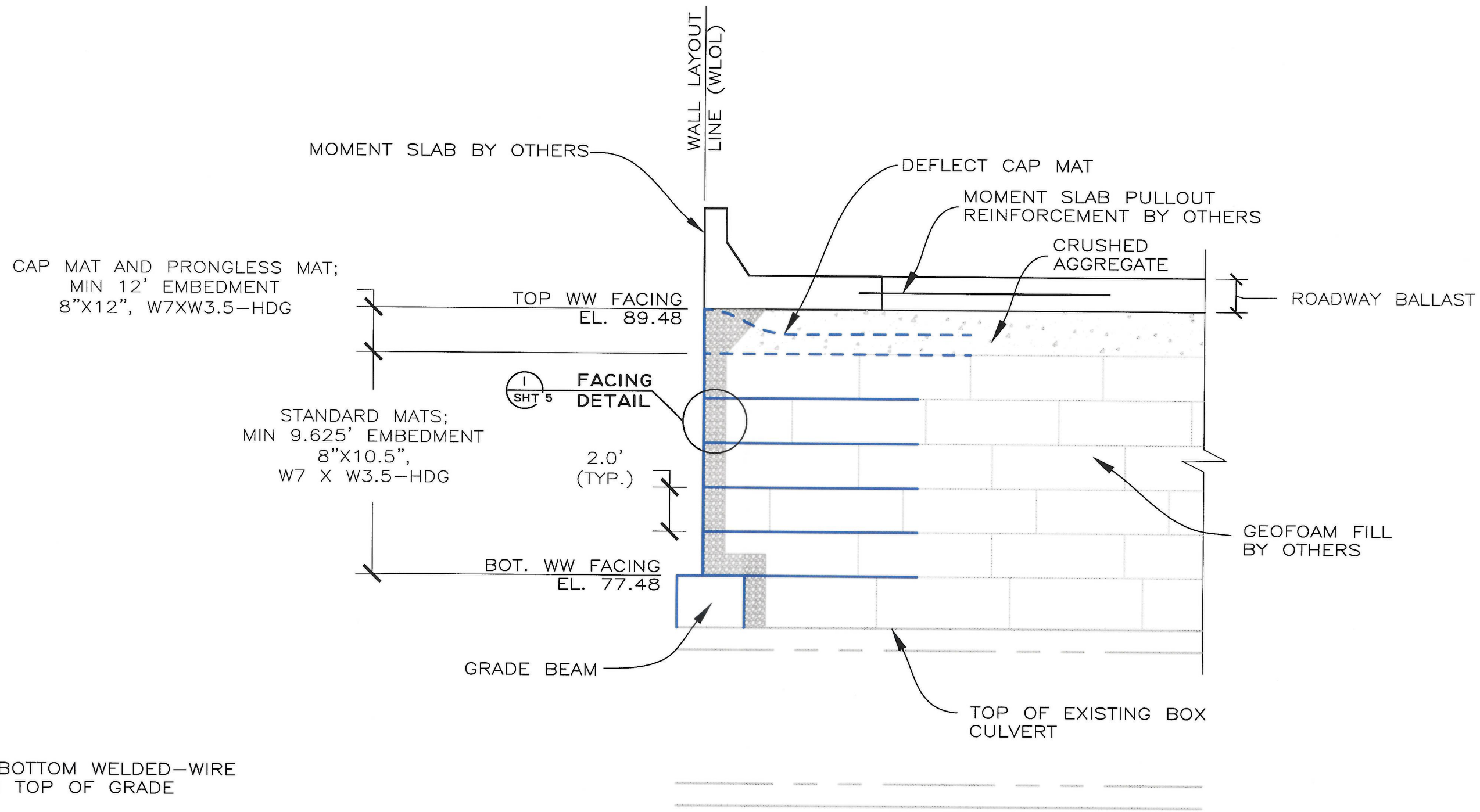
 American Geotechnics  
 5260 Chinden Blvd.  
 Boise, ID 83714  
 (208) 658-8700  
 Fax: (208) 658-8703

WW FACING PLAN & ELEVATION	DWG DATE: 27 JUL 2017
FACING	HRW NO.: 161129BW
GLACIER HWY RECONSTRUCTION	SHEET 2 OF 7
FRITZ COVE RD TO SEAVIEW	
AK DOT	JUNEAU, AK

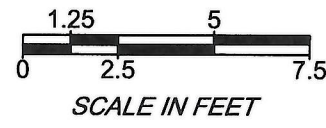
090531 Glacier Hwy MSE Walls - Prepared 7-31-2017.dwg

7/31/2017 3:19 PM

09055.1 Glacier Hwy MSE Walls - Prepared 7-31-2017.dwg  
7/31/2017 3:19 PM

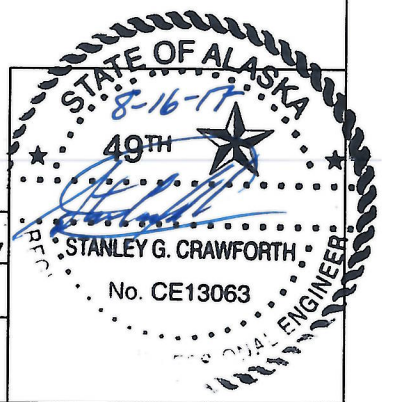


**NOTE:**  
PLACE BOTTOM WELDED-WIRE MAT ON TOP OF GRADE BEAM.



**TYPICAL SECTION**  
GRAPHIC SCALE

A  
SHT 1 & 2



REV.	DATE	BY	DESCRIPTION	CADD:
				HWR
				DESIGNED:
				HWR
				CHECKED:
				SGC

**HILFIKER RETAINING WALLS**

1902 Hilfiaker Lane  
Eureka, CA 95503-5711  
TOLL-FREE 800.762.8962  
PH 707.443.5093 FAX 707.443.2891  
WEB SITE www.hilfiaker.com E-MAIL info@hilfiaker.com

**AMERICAN GEO TECHNICS**

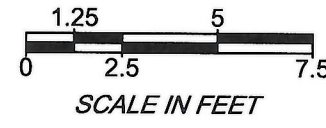
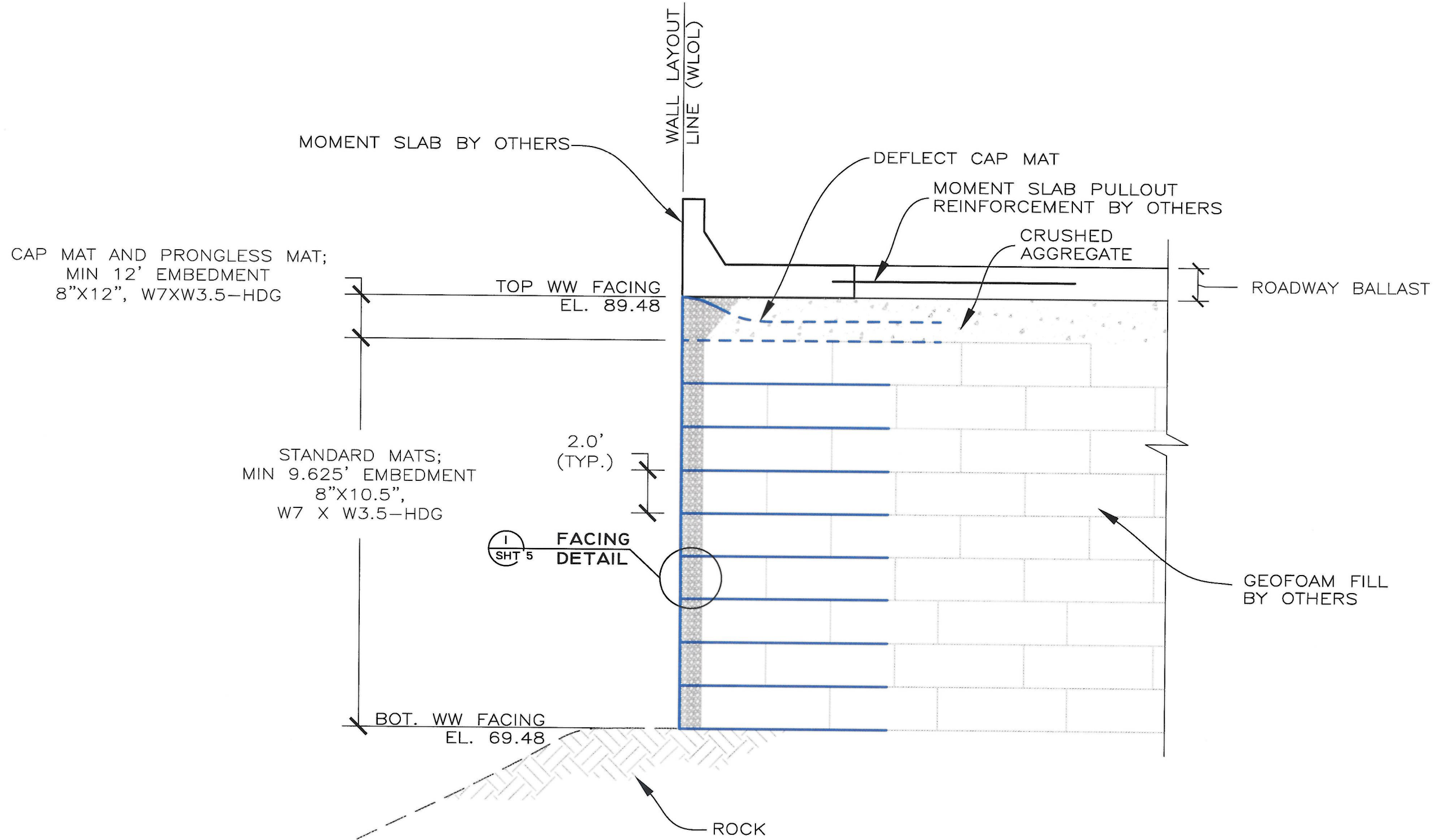
American Geotechnics  
5260 Chinden Blvd.  
Boise, ID 83714  
(208) 658-8700  
Fax: (208) 658-8703

WW FACING - SECTION
WELDED WIRE WALL
GLACIER HWY RECONSTRUCTION
FRITZ COVE RD TO SEAVIEW
AK DOT
JUNEAU, AK

DWG DATE:	27 JUL 2017
HRW NO.:	161129BW
SHEET	3
OF	7

02055.1 Glacier Hwy MSE Walls, Prepared 7-31-2017.dwg

7/31/2017 3:19 PM



**TYPICAL SECTION B**  
GRAPHIC SCALE  
SHT 1 & 2

THIS DRAWING IS FURNISHED SOLELY FOR THE USE OF OR IN CONNECTION WITH THIS PROJECT AND THE PROPRIETARY INFORMATION SHOWN HEREON IS NOT TO BE TRANSMITTED TO ANY OTHER ORGANIZATION WITHOUT SPECIFIC AUTHORIZATION BY THE HILFIKER COMPANY. HILFIKER RETAINING WALLS ARE PROTECTED BY ONE OR MORE OF THE FOLLOWING PATENTS: 243,613; 243,697; 288,616; 4,117,886; 4,329,089; 4,324,508; 4,391,557; 4,505,621; 4,343,318; 4,661,023; 4,656,938; 4,929,126; 5,076,735; 5,647,895; 5,722,799; 5,733,072; 6,357,970B1; 6,874,975B2; 7,033,118B2; AND OTHERS. OTHER PATENTS PENDING (2008)

REV.	DATE	BY	DESCRIPTION

CADD:  
HWR  
DESIGNED:  
HWR  
CHECKED:  
SGC

**HILFIKER RETAINING WALLS**  

 1902 Hilfiker Lane  
 Eureka, CA 95503-5711  
 TOLL-FREE 800.762.8962  
 PH 707.443.5093 FAX 707.443.2891  
 WEBSITE www.hilfiker.com E-MAIL info@hilfiker.com

**AMERICAN GEOTECHNICS**  

 American Geotechnics  
 5260 Chinden Blvd.  
 Boise, ID 83714  
 (208) 658-8700  
 Fax: (208) 658-8703

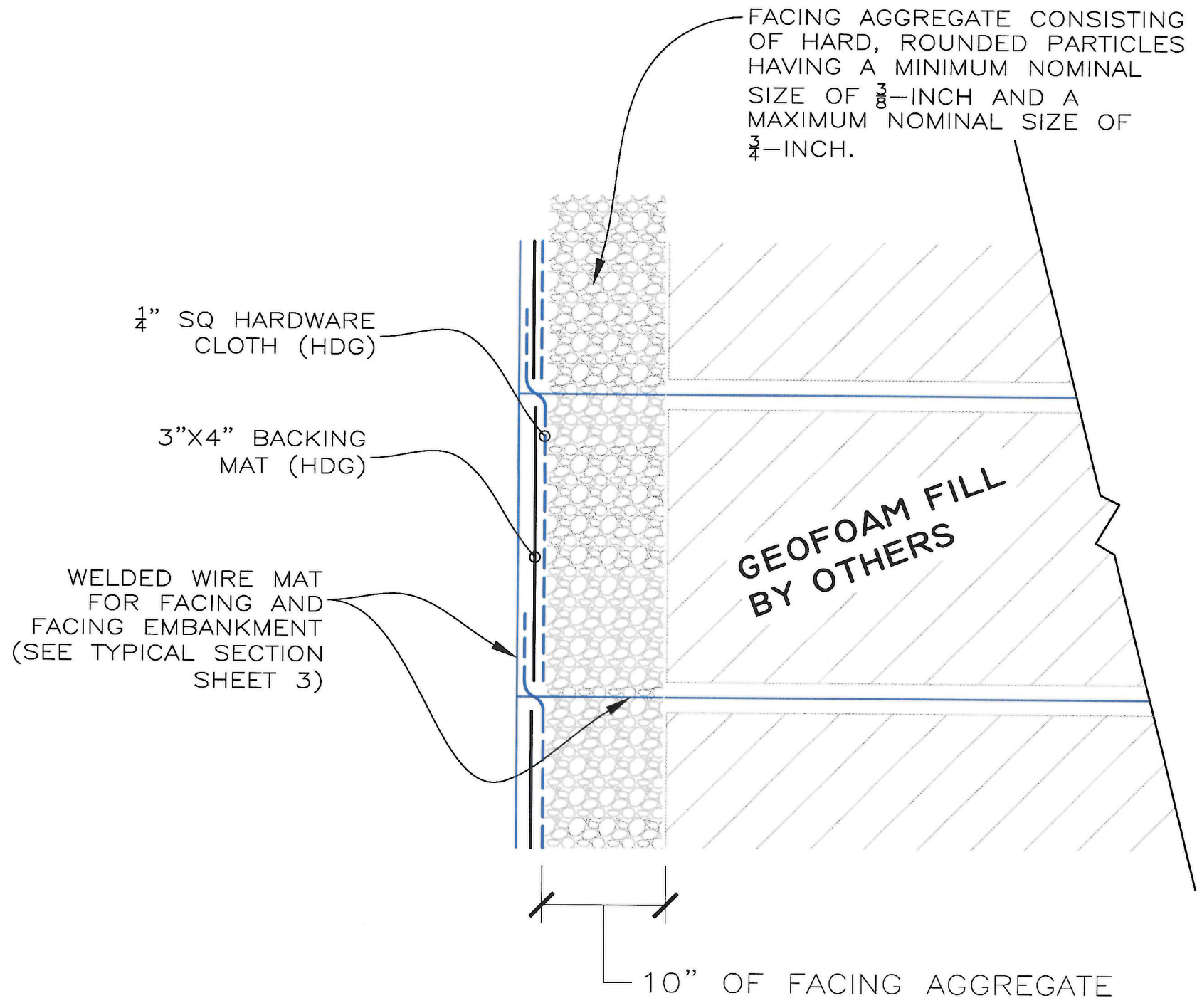
WW FACING - SECTION  
 WELDED WIRE WALL  
 GLACIER HWY RECONSTRUCTION  
 FRITZ COVE RD TO SEAVIEW  
 AK DOT JUNEAU, AK

DWG DATE:  
27 JUL 2017  
 HRW NO.:  
161129BW  
 SHEET  
4  
 OF 7

STATE OF ALASKA  
 8-16-17  
 49TH  
  
 STANLEY G. CRAWFORTH  
 No. CE13063  
 CIVIL ENGINEER

02955.1 Glacier Hwy MSE Walls Prepared 7-31-2017.dwg

7/31/2017 3:19 PM



**FACING DETAIL**  
NOT TO SCALE

1  
SHT 3 & 4

THIS DRAWING IS FURNISHED SOLELY FOR THE USE OF OR IN CONNECTION WITH THIS PROJECT AND THE PROPRIETARY INFORMATION SHOWN HEREON IS NOT TO BE TRANSMITTED TO ANY OTHER ORGANIZATION WITHOUT SPECIFIC AUTHORIZATION BY THE HILFIKER COMPANY. HILFIKER RETAINING WALLS ARE PROTECTED BY ONE OR MORE OF THE FOLLOWING PATENTS: 243,613; 243,697; 288,616; 4,117,686; 4,329,089; 4,324,508; 4,391,557; 4,505,621; 4,343,318; 4,661,023; 4,656,939; 4,828,125; 5,076,735; 5,647,895; 5,722,799; 5,733,072; 6,357,970B1; 6,674,975B2; 7,033,118B2; AND OTHERS. OTHER PATENTS PENDING (2008)

REV.	DATE	BY	DESCRIPTION

CADD:	HWR
DESIGNED:	HWR
CHECKED:	SGC

**HILFIKER RETAINING WALLS**

**HW**

1902 Hilfiaker Lane  
Eureka, CA 95503-5711  
TOLL-FREE 800.762.8962  
PH 707.443.5093 FAX 707.443.2891  
WEB SITE www.hilfiaker.com E-MAIL info@hilfiaker.com

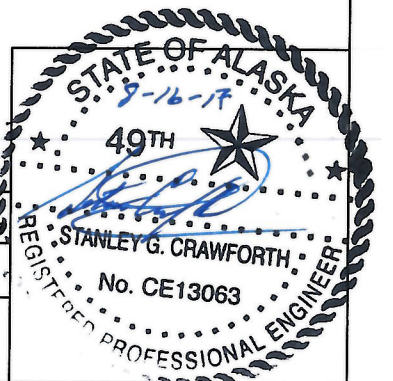
SINCE 1902  
QUALITY WALLS

**AMERICAN GEO TECHNICS**

American Geotechnics  
5260 Chinden Blvd.  
Boise, ID 83714  
(208) 658-8700  
Fax: (208) 658-8703

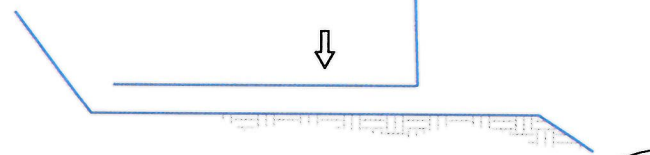
WW FACING - DETAIL	
WELDED WIRE WALL	
GLACIER HWY RECONSTRUCTION	
FRITZ COVE RD TO SEAVIEW	
AK DOT	JUNEAU, AK

DWG DATE:	27 JUL 2017
HRW NO.:	161129BW
SHEET	5
OF	7



**STEP 1**

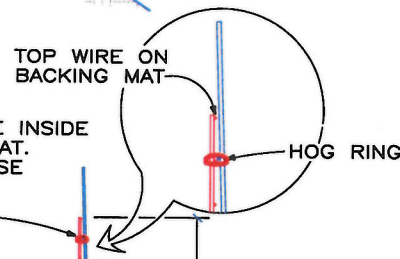
PLACE THE FIRST COURSE OF SOIL REINFORCEMENT MATS ON PREPARED FOUNDATION



**STEP 2**

PLACE THE BACKING MAT AGAINST THE INSIDE FACE OF THE SOIL REINFORCEMENT MAT. CLIP THE SECOND-TO-TOP TRANSVERSE WIRE ON THE BACKING MAT TO THE TOP TRANSVERSE WIRE ON THE SOIL REINFORCEMENT MAT

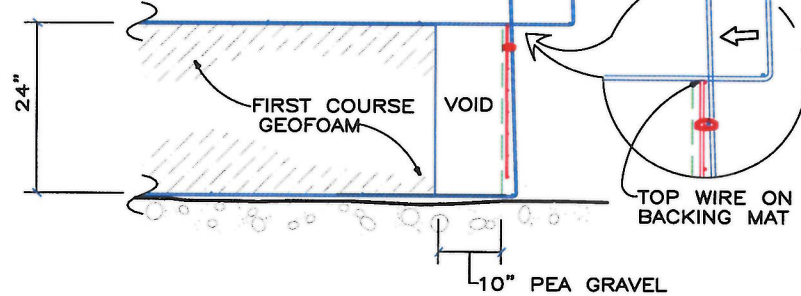
INSTALL CONTINUOUS HARDWARE CLOTH, HOG-RING TO THE TOP WIRE ON THE BACKING MAT



**STEP 3**

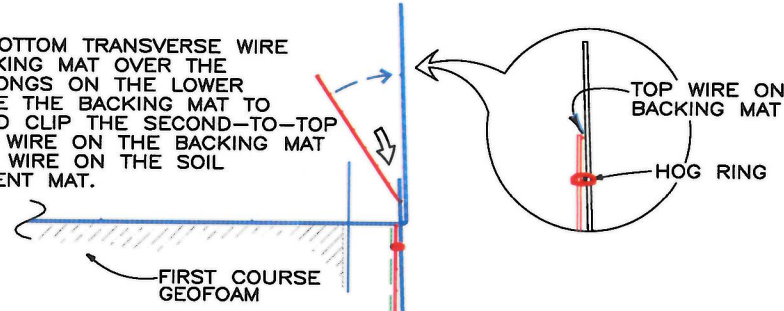
PLACE AND COMPACT THE BACKFILL IN LAYERS AND DENSITIES AS SPECIFIED IN THE PROJECT PLANS. LEAVE A VOID AT THE FACE AS SHOWN.

PLACE THE SECOND COURSE OF SOIL REINFORCEMENT MATS WITH THE BASE LONGITUDINAL WIRES RESTING ON THE TOP TRANSVERSE WIRE OF THE BACKING MAT BELOW. SLIDE THE SOIL REINFORCEMENT MAT INTO ALIGNMENT



**STEP 4**

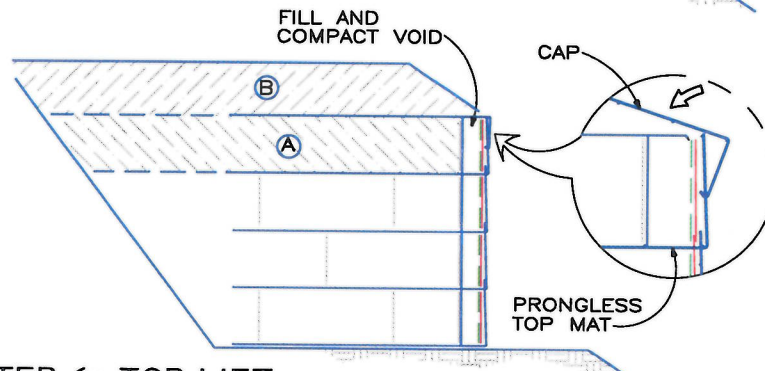
HOOK THE BOTTOM TRANSVERSE WIRE OF THE BACKING MAT OVER THE VERTICAL PRONGS ON THE LOWER MAT. ROTATE THE BACKING MAT TO VERTICAL AND CLIP THE SECOND-TO-TOP TRANSVERSE WIRE ON THE BACKING MAT TO THE TOP WIRE ON THE SOIL REINFORCEMENT MAT.



**STEP 5**

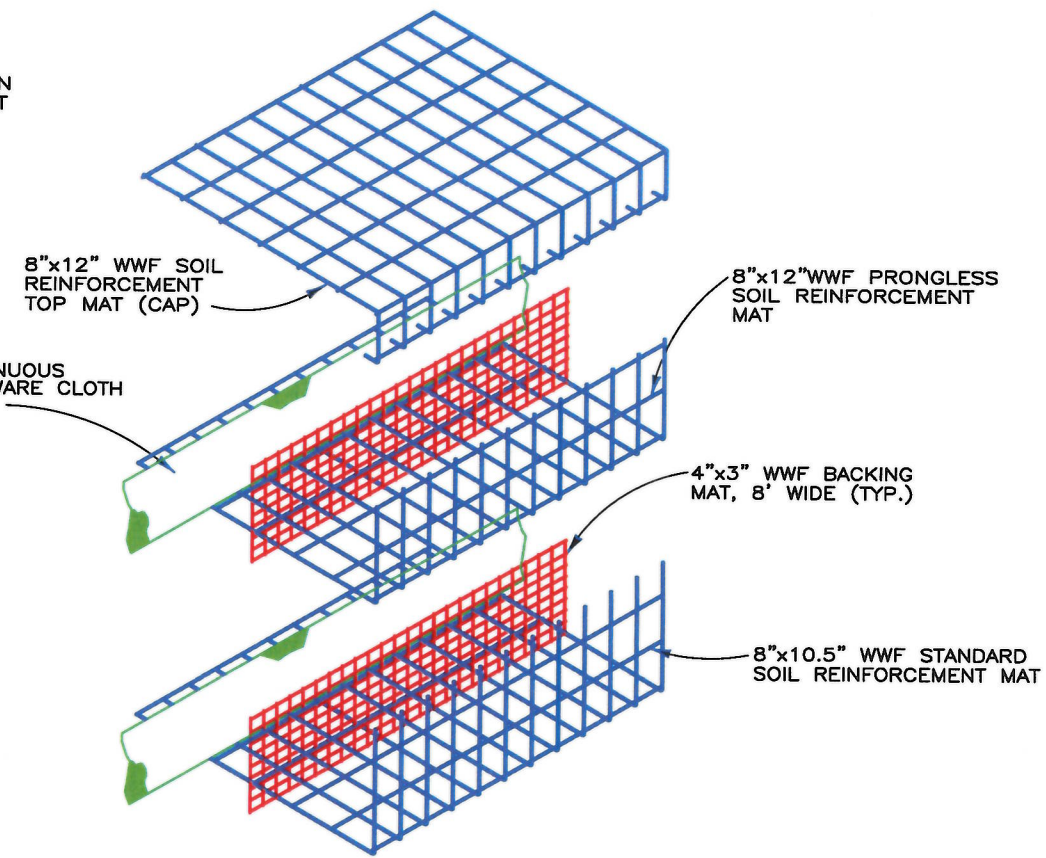
INSTALL THE CONTINUOUS HARDWARE CLOTH. PLACE AND COMPACT THE BACKFILL TO THE BASE ELEVATION OF THE NEXT MAT. REPEAT STEPS 3 THRU 5 TO THE TOP LIFT.

TEMPORARY CONSTRUCTION STAKE, OPTIONAL



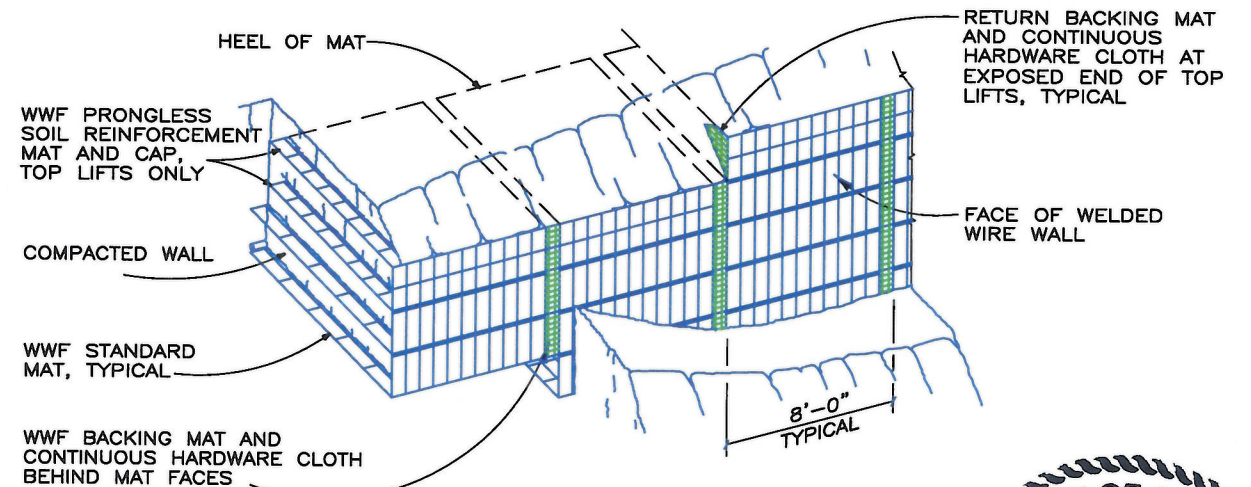
**STEP 6: TOP LIFT**

PLACE THE TOP LIFT PRONGLESS MAT, BACKING MAT AND CONTINUOUS FILTER FABRIC. PLACE AND COMPACT BACKFILL IN AREA "A" HOOK THE CAP OVER THE MIDDLE TRANSVERSE WIRE ON THE PRONGLESS MAT, AND ROTATE INTO PLACE BACKFILL "B" TO 1'-6" MINIMUM COVER OVER THE CAP.



**WELDED WIRE WALL COMPONENTS**  
NOT TO SCALE

**CONSTRUCTION SEQUENCE**  
NOT TO SCALE



**PICTORIAL ELEVATION**  
NOT TO SCALE

02055.1 Glacier Hwy MSE Walls Prepared 7-31-2017.dwg

7/31/2017 3:19 PM

THIS DRAWING IS FURNISHED SOLELY FOR THE USE OF OR IN CONNECTION WITH THIS PROJECT AND THE PROPRIETARY INFORMATION SHOWN HEREON IS NOT TO BE TRANSMITTED TO ANY OTHER ORGANIZATION WITHOUT SPECIFIC AUTHORIZATION BY THE HILFIKER COMPANY. HILFIKER RETAINING WALLS ARE PROTECTED BY ONE OR MORE OF THE FOLLOWING PATENTS: 243,613; 243,697; 286,616; 4,117,886; 4,329,089; 4,324,508; 4,391,557; 4,505,621; 4,343,318; 4,681,023; 4,856,039; 4,929,125; 5,078,735; 5,847,695; 5,722,799; 5,753,072; 6,357,970B1; 6,874,975B2; 7,033,118B2; AND OTHERS. OTHER PATENTS PENDING (2008)

REV.	DATE	BY	DESCRIPTION	CADD:
				HWR
				DESIGNED:
				HWR
				CHECKED:
				SGC

**HILFIKER RETAINING WALLS**

1902 Hilfiker Lane  
Eureka, CA 95503-5711  
TOLL-FREE 800.762.8962  
PH 707.443.5093 FAX 707.443.2891  
WEB SITE www.hilfiker.com E-MAIL info@hilfiker.com

**AMERICAN GEOTECHNICS**

5260 Chinden Blvd.  
Boise, ID 83714  
(208) 658-8700  
Fax: (208) 658-8703

CONSTRUCTION SEQUENCE	DWG DATE: 27 JUL 2017
WELDED WIRE WALL	HRW NO.: 161129BW
GLACIER HWY RECONSTRUCTION	SHEET 6 OF 7
FRITZ COVE RD TO SEAVIEW	
AK DOT	JUNEAU, AK

STATE OF ALASKA

8-16-17

49TH

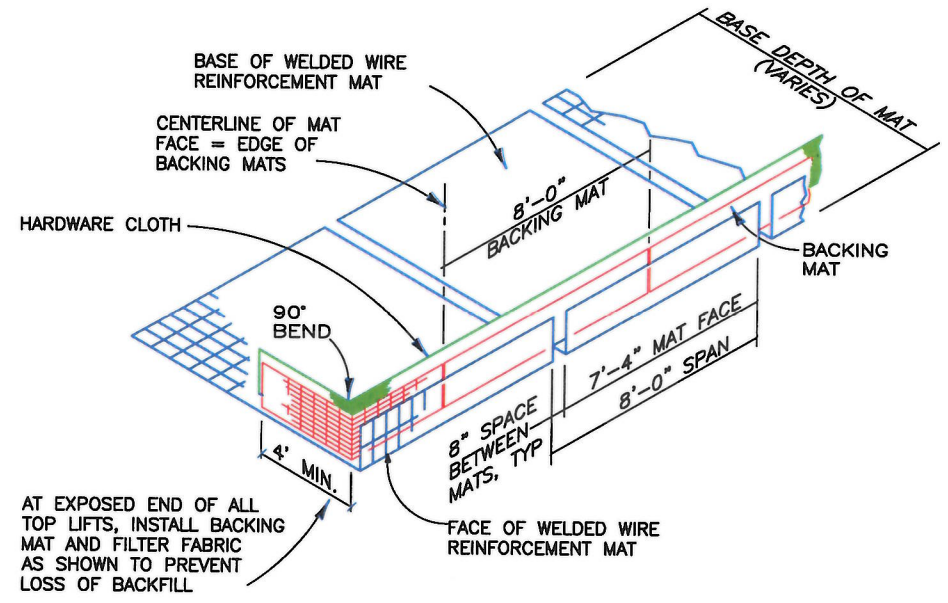
STANLEY G. CRAWFORTH

No. CE13063

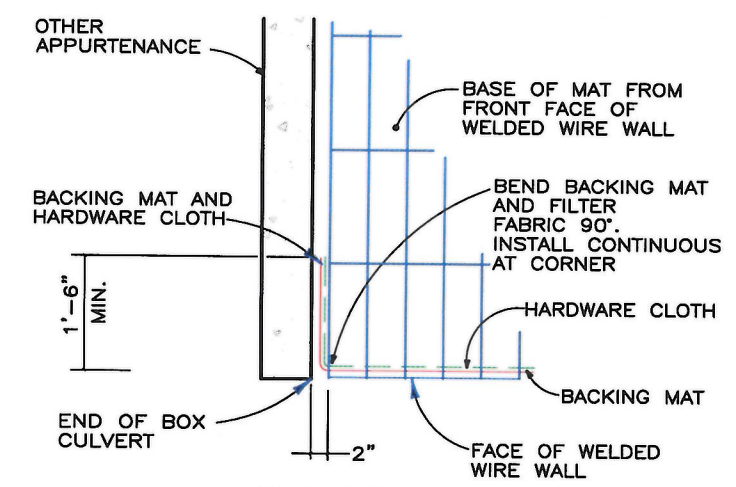
REGISTERED PROFESSIONAL ENGINEER

02055.1 Glacier Hwy MSE Walls Prepared 7-31-2017.dwg

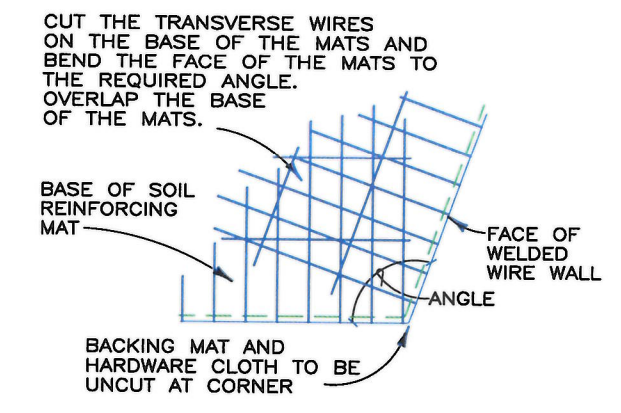
7/31/2017 3:19 PM



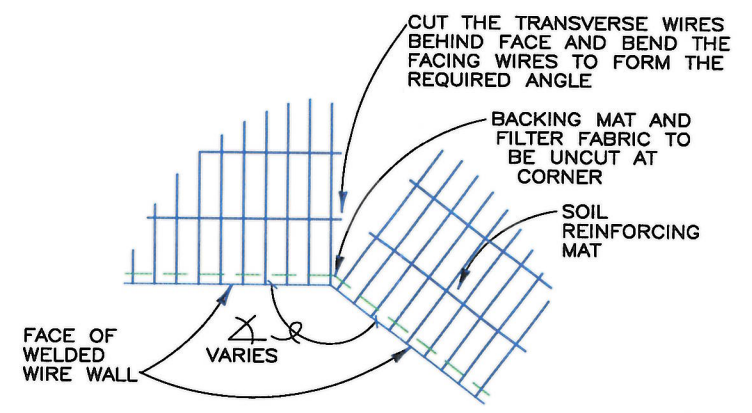
**ISOMETRIC VIEW**  
**WELDED WIRE WALL COMPONENTS WITH RETURN MAT**  
 NOT TO SCALE



**PLAN VIEW**  
**WELDED WIRE WALL END AT OTHER APPURTENANCE**  
 NOT TO SCALE



**PLAN VIEW**  
**OBTUSE CONVEX ANGLE**  
 NOT TO SCALE



**PLAN VIEW**  
**CONCAVE ANGLE DETAIL**  
 NOT TO SCALE

THIS DRAWING IS FURNISHED SOLELY FOR THE USE OF OR IN CONNECTION WITH THIS PROJECT AND THE PROPRIETARY INFORMATION SHOWN HEREON IS NOT TO BE TRANSMITTED TO ANY OTHER ORGANIZATION WITHOUT SPECIFIC AUTHORIZATION BY THE HILFIKER COMPANY. HILFIKER RETAINING WALLS ARE PROTECTED BY ONE OR MORE OF THE FOLLOWING PATENTS: 243,613; 243,697; 288,616; 4,117,686; 4,329,089; 4,324,508; 4,391,557; 4,505,821; 4,343,318; 4,681,023; 4,856,939; 4,929,125; 4,076,735; 5,647,895; 5,722,799; 5,733,072; 6,357,970B1; 6,874,978B2; 7,033,118B2 AND OTHERS. OTHER PATENTS PENDING (2006)

REV.	DATE	BY	DESCRIPTION

CADD: HWR  
 DESIGNED: HWR  
 CHECKED: SGC

**HILFIKER RETAINING WALLS**

1902 Hilfiker Lane  
 Eureka, CA 95503-5711  
 TOLL-FREE 800.762.8962  
 PH 707.443.5093 FAX 707.443.2891  
 WEB SITE www.hilfiker.com E-MAIL info@hilfiker.com

**AMERICAN GEOTECHNICS**

American Geotechnics  
 5260 Chinden Blvd.  
 Boise, ID 83714  
 (208) 658-8700  
 Fax: (208) 658-8703

MSE WALL DETAILS	DWG DATE: 27 JUL 2017
WELDED WIRE WALL	HRW NO.: 161129BW
GLACIER HWY RECONSTRUCTION FRITZ COVE RD TO SEAVIEW	SHEET 7 OF 7
AK DOT	JUNEAU, AK

