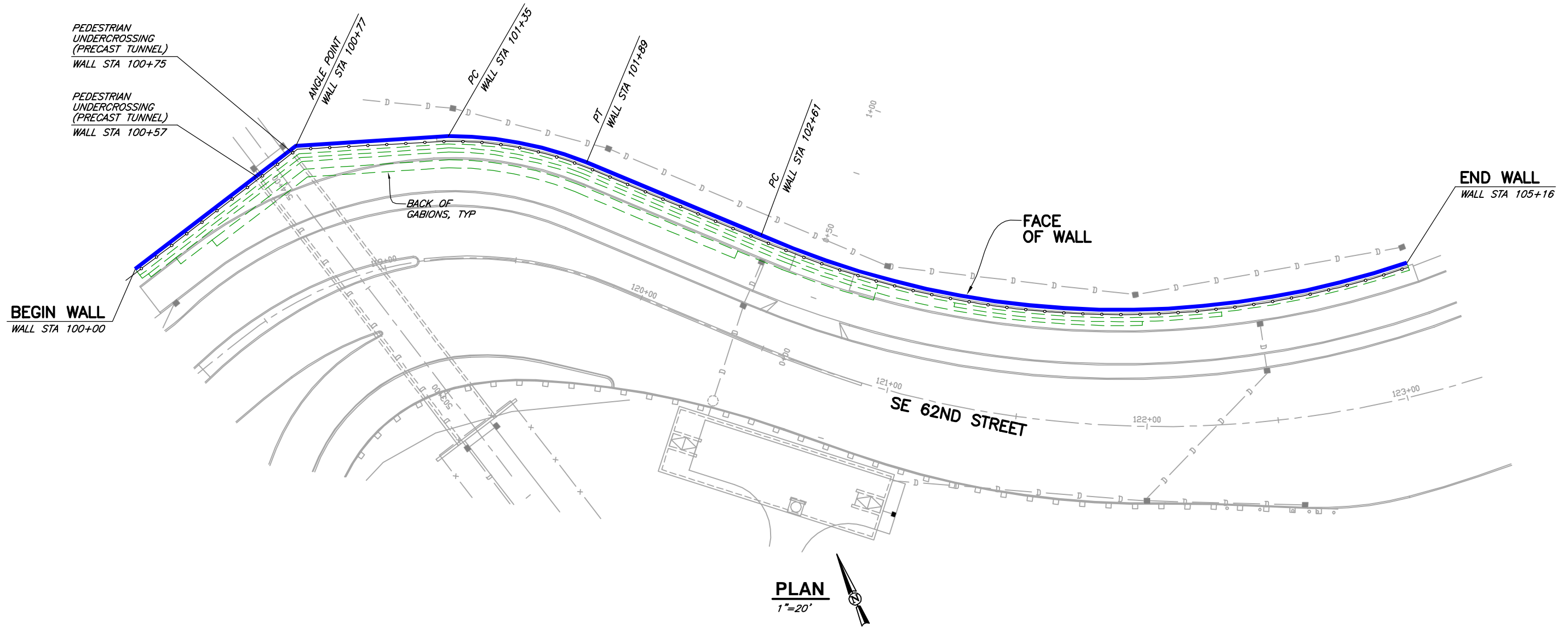


CAD: \\EUREKA\PROJECTS\2017\017155-SE-62ND-WALLS\DWGS\017155-62ND-STREET.DWG
(HRW 161214 AW)



PLAN
1"=20'

SUPPLIED QUANTITIES

SIZE	# REQ'D
6'Lx3'Hx3'D	84
6'Lx3'Hx4'-6"D	51
6'Lx3'Hx6'D	50
6'Lx3'Hx9'D	34
6'Lx3'Hx12'D	31
6'Lx1'-6"Hx3'D	30
6'Lx1'-6"Hx4'-6"D	5
6'Lx1'-6"Hx6'D	17
6'Lx1'-6"Hx9'D	10
3'Lx3'Hx3'D	2
3'Lx3'Hx4'-6"D	1
3'Lx3'Hx12'D	1
3'Lx1'-6"Hx3'D	1
2'Lx3'Hx3'D	1
2'Lx3'Hx4'-6"D	1
2'Lx3'Hx6'D	1
2'Lx3'Hx9'D	1
2'Lx3'Hx12'D	1
4'Lx3'Hx3'D	1
4'Lx3'Hx4'-6"D	1
4'Lx3'Hx6'D	1
4'Lx3'Hx9'D	1
4'Lx3'Hx12'D	1

DESIGN NOTES


- DESIGN IS BASED ON THE ASSUMPTION THAT BACKFILL WITHIN THE CONSTRUCTION MASS, METHODS OF CONSTRUCTION AND QUALITY OF MATERIALS CONFORM TO THE REQUIREMENTS OF HILFIKER RETAINING WALLS.
IF ACTUAL CHARACTERISTICS, GRADES OR DIMENSIONS OF SOIL MATERIALS DIFFER FROM THOSE LISTED ABOVE OR SHOWN ON THE PLANS HILFIKER RETAINING WALLS SHALL BE NOTIFIED TO EVALUATE THE NEED TO REDESIGN
- ASSUMED SOIL CHARACTERISTICS:
GABION BACKFILL:
UNIT WEIGHT: 112 PCF
RETAINED BACKFILL:
UNIT WEIGHT: 135 PCF
INTERNAL FRICTION ANGLE: 36°
FOUNDATION SOILS:
FRICTION ANGLE FOR SLIDING: 30°
MAXIMUM BEARING PRESSURE: 2.90 KSF (D.L.+L.L.)
- DRAINAGE CONTROL SHALL BE AS SPECIFIED IN THE PROJECT PLANS AND SPECIFICATIONS OR AS DIRECTED BY THE OWNER'S ENGINEER. PAYMENT FOR DRAINAGE SHALL BE AS SPECIFIED IN THE PROJECT SPECIFICATIONS.
- REFERENCE DOCUMENTS:
WALL PLANS IN PDF FORMAT BY GRAY & OSBORNE INC, DATED NOVEMBER 2016 AND IN .DWG FORMAT BY QUIGG BROTHERS ON 7/6/2017 AND 7/20/17.

THE DESIGN CONTAINED ON THESE DRAWINGS IS BASED ON INFORMATION PROVIDED BY THE OWNER. ON THE BASIS OF THIS INFORMATION, THE HILFIKER COMPANY HAS DESIGNED, AND IS RESPONSIBLE FOR THE INTERNAL STABILITY OF THE STRUCTURE ONLY. EXTERNAL STABILITY, INCLUDING FOUNDATION AND SLOPE STABILITY, IS THE RESPONSIBILITY OF THE OWNER.


 EXPIRES: 2/09/2018
ARTWELD GABIONS
HILFIKER RETAINING WALLS


1902 Hilfiker Lane
 Eureka, CA 95503-5711
 TOLL-FREE 800.762.8962
 PH 707.443.5093 FAX 707.443.2891
 WEBSITE www.hilfiker.com E-MAIL info@hilfiker.com

CONSULTING ENGINEERS & GEOLOGISTS, INC.
 WWW.SHN-ENGR.COM
 812 W. WABASH
 EUREKA, CA 95501
 707-441-8855



NO.	DATE	REVISION	BY

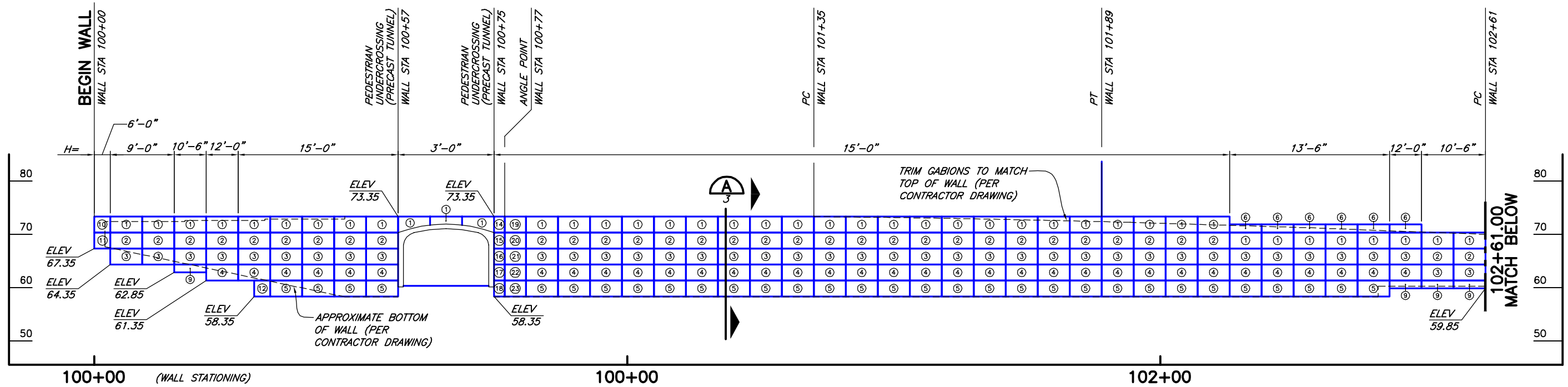
WALL PLAN, NOTES & QUANTITIES

CITY OF ISSAQUAH STREET EXTENSION IMPROVEMENTS
 ISSAQUAH, WASHINGTON

WALL PLAN, NOTES & QUANTITIES

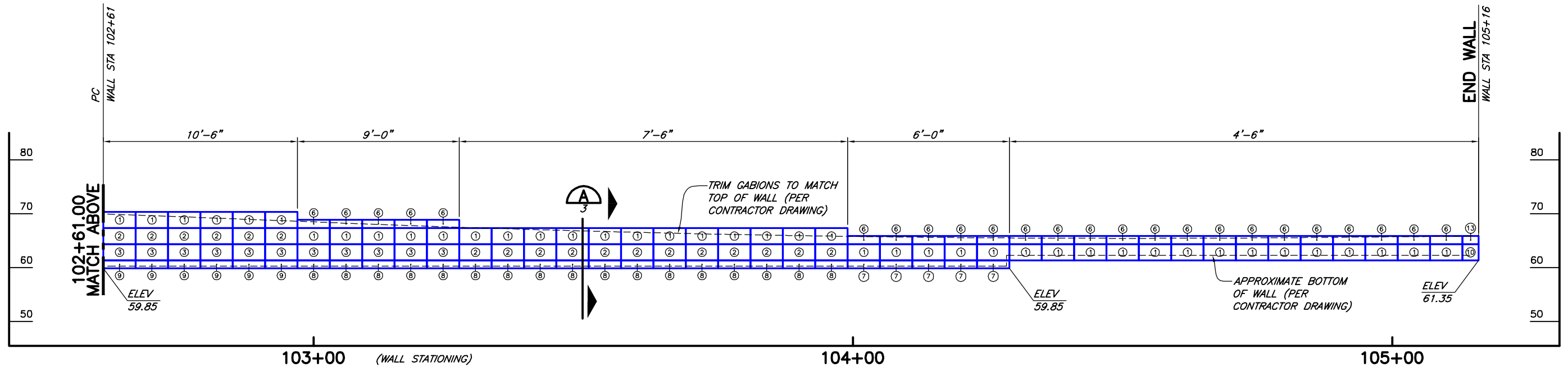
SHEET 1 OF 4
 DATE 7/28/17
 PROJ. NO. 017155

CAD: \\EUREKA\PROJECTS\2017\017155-SE-62ND-WALLS\DWGS\017155-62ND-STREET.DWG
(HRW 161214 AW)



DEVELOPED WALL ELEVATION (BACKFACE)

1"=10' HORIZ AND VERT
U.O.S.= UNLESS OTHERWISE STATED



DEVELOPED WALL ELEVATION (CONT) (BACKFACE)

1"=10' HORIZ AND VERT
U.O.S.= UNLESS OTHERWISE STATED

GABION SCHEDULE

① 6'Lx3'Hx3'D	⑨ 6'Lx1'-6"Hx9'D	⑰ 2'Lx3'Hx9'D
② 6'Lx3'Hx4'-6"D	⑩ 3'Lx3'Hx3'D	⑱ 2'Lx3'Hx12'D
③ 6'Lx3'Hx6'D	⑪ 3'Lx3'Hx4'-6"D	⑲ 4'Lx3'Hx3'D
④ 6'Lx3'Hx9'D	⑫ 3'Lx3'Hx12'D	⑳ 4'Lx3'Hx4'-6"D
⑤ 6'Lx3'Hx12'D	⑬ 3'Lx1'-6"Hx3'D	㉑ 4'Lx3'Hx6'D
⑥ 6'Lx1'-6"Hx3'D	⑭ 2'Lx3'Hx3'D	㉒ 4'Lx3'Hx9'D
⑦ 6'Lx1'-6"Hx4'-6"D	⑮ 2'Lx3'Hx4'-6"D	㉓ 4'Lx3'Hx12'D
⑧ 6'Lx1'-6"Hx6'D	⑯ 2'Lx3'Hx6'D	

THE DESIGN CONTAINED ON THESE DRAWINGS IS BASED ON INFORMATION PROVIDED BY THE OWNER. ON THE BASIS OF THIS INFORMATION, THE HILFIKER COMPANY HAS DESIGNED, AND IS RESPONSIBLE FOR THE INTERNAL STABILITY OF THE STRUCTURE ONLY. EXTERNAL STABILITY, INCLUDING FOUNDATION AND SLOPE STABILITY, IS THE RESPONSIBILITY OF THE OWNER.



EXPIRES: 2/09/2018



**ARTWELD GABIONS
HILFIKER RETAINING WALLS**

1902 Hilfiker Lane
Eureka, CA 95503-5711
TOLL-FREE 800.762.8962
PH 707.443.5093 FAX 707.443.2891
WEBSITE www.hilfiker.com E-MAIL info@hilfiker.com



VERIFY SCALES
BAR IS ONE INCH ON ORIGINAL DRAWING
IF NOT ONE INCH ON THIS SHEET, ADJUST SCALES ACCORDINGLY

CONSULTING ENGINEERS & GEOLOGISTS, INC.
WWW.SHN-ENGR.COM
812 W. WABASH EUREKA, CA 95501
707-441-8855

SHN

NO.	DATE	REVISION	BY

DSGN K/JN
DR MMD
CHK K/JN
APVD

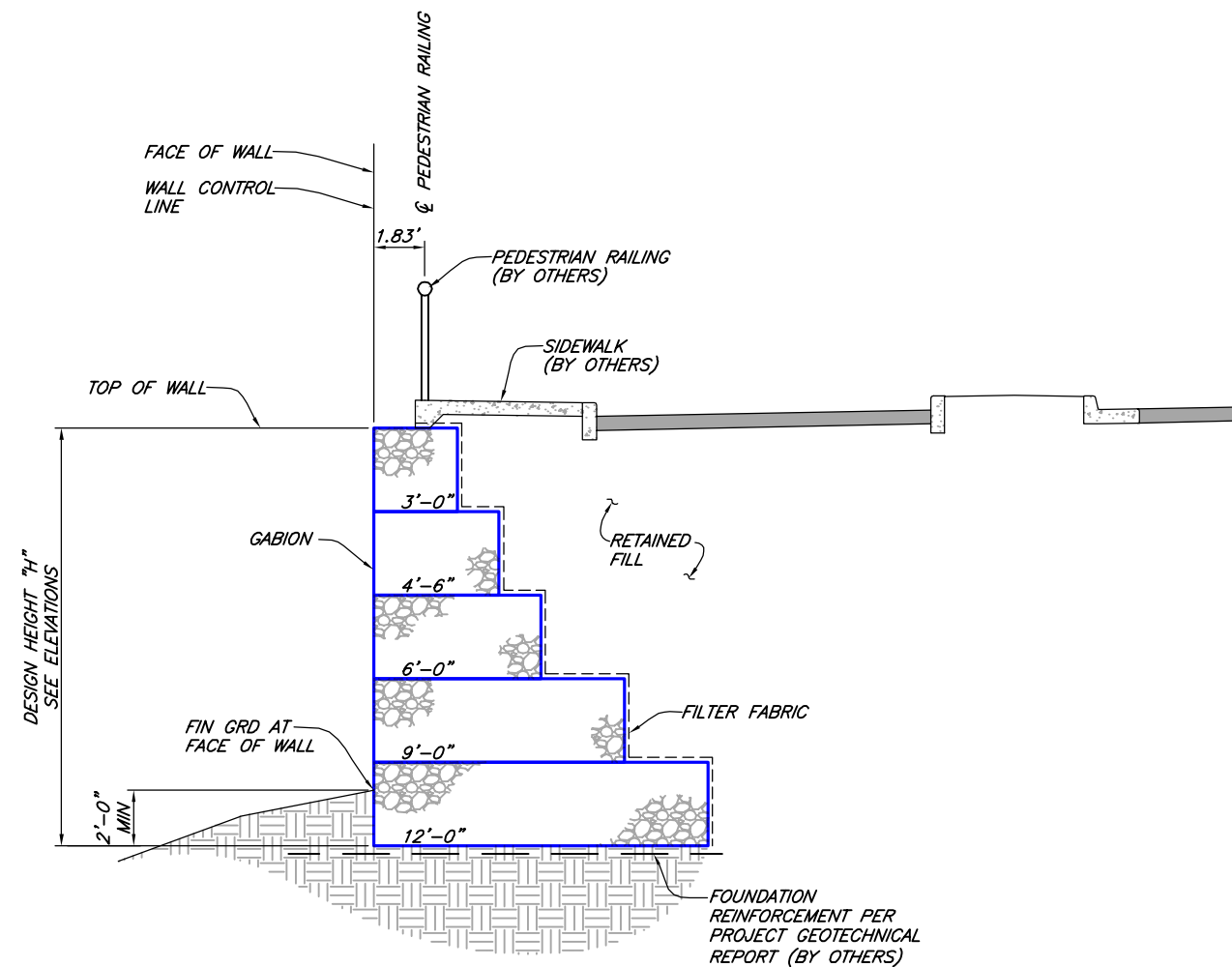
CITY OF ISSAQUAH
STREET EXTENSION IMPROVEMENTS
ISSAQUAH, WASHINGTON

WALL ELEVATION

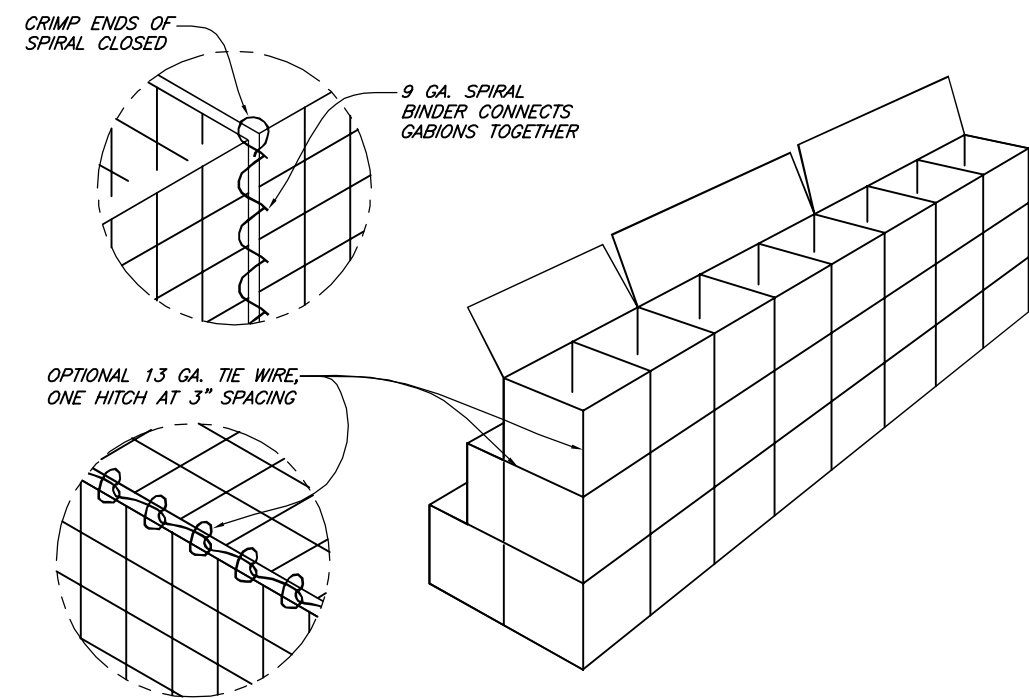
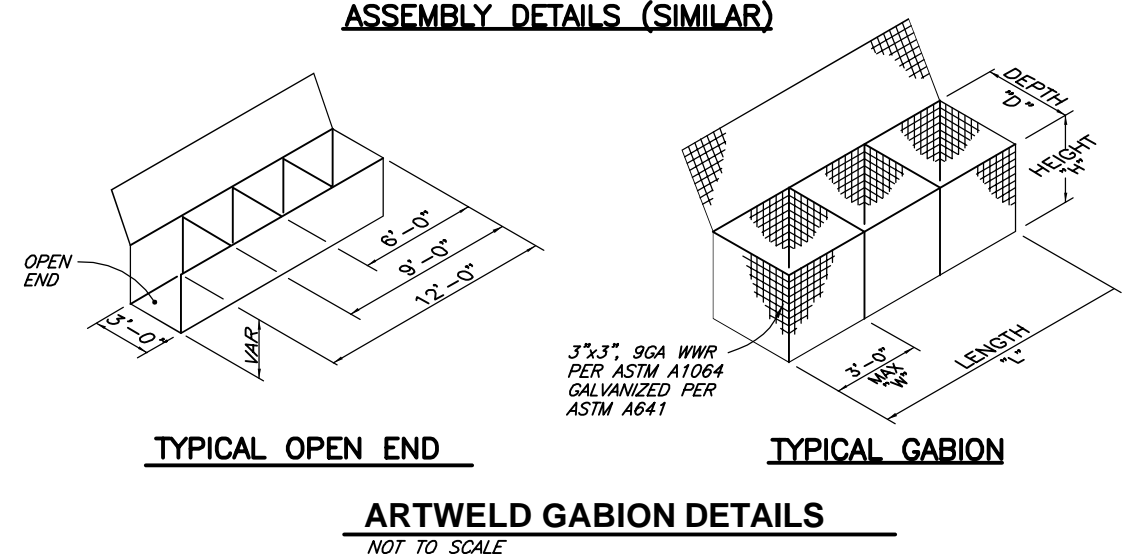
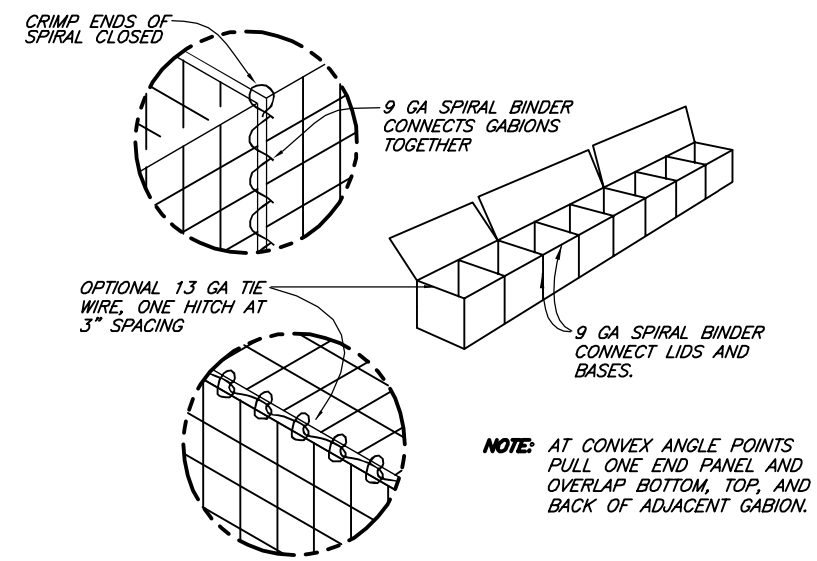
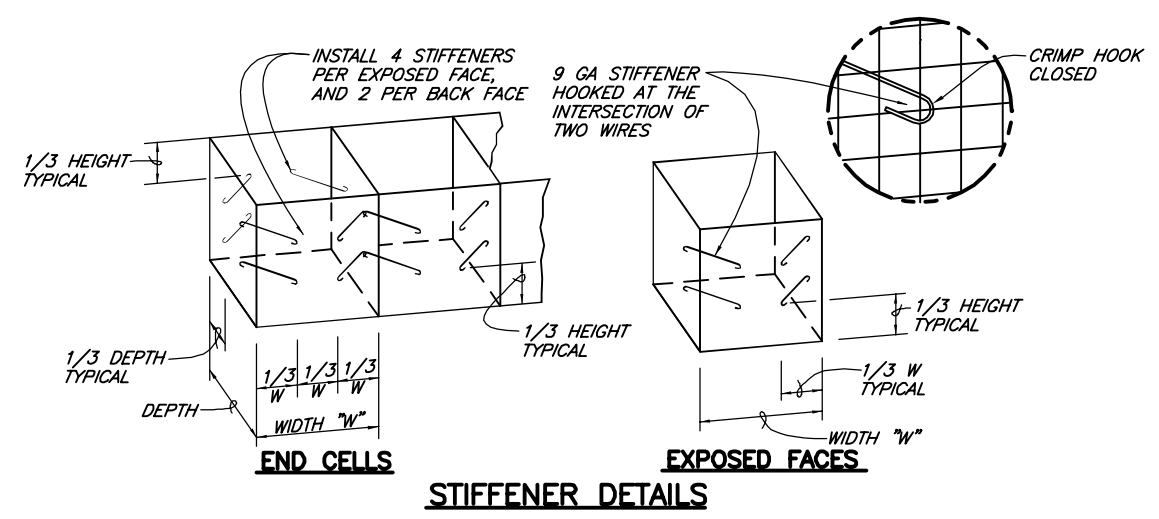
SE 62ND STREET EXTENSION IMPROVEMENTS
ISSAQUAH, WASHINGTON

SHEET 2 OF 4
DATE 7/28/17
PROJ. NO. 017155

CAD: \\EUREKA\PROJECTS\2017\017155-SE-62ND-WALLS\DWGS\017155-62ND-STREET.DWG
(HRW 161214 AW)



SECTION A
NOT TO SCALE 2



ASSEMBLY DETAILS- VERTICAL WALL
NOT TO SCALE

THE DESIGN CONTAINED ON THESE DRAWINGS IS BASED ON INFORMATION PROVIDED BY THE OWNER. ON THE BASIS OF THIS INFORMATION, THE HILFIKER COMPANY HAS DESIGNED, AND IS RESPONSIBLE FOR THE INTERNAL STABILITY OF THE STRUCTURE ONLY. EXTERNAL STABILITY, INCLUDING FOUNDATION AND SLOPE STABILITY, IS THE RESPONSIBILITY OF THE OWNER.



EXPIRES: 2/09/2018

ARTWELD GABIONS
HILFIKER RETAINING WALLS

1902 Hilfiker Lane
Eureka, CA 95503-5711
TOLL-FREE 800.762.8962
PH 707.443.5093 FAX 707.443.2891
WEBSITE www.hilfiker.com E-MAIL info@hilfiker.com

VERIFY SCALES
BAR IS ONE INCH ON ORIGINAL DRAWING
IF NOT ONE INCH ON THIS SHEET, ADJUST SCALES ACCORDINGLY

CONSULTING ENGINEERS & GEOLOGISTS, INC.
WWW.SHIN-ENGR.COM
812 W. WABASH EUREKA, CA 95501
707-441-8855

SH

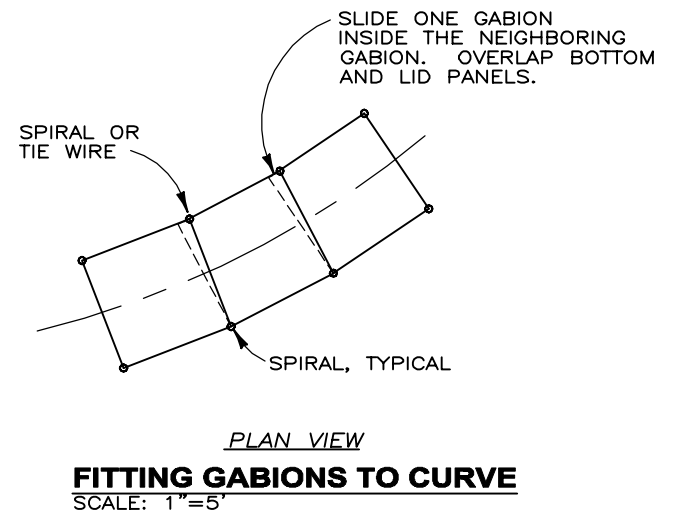
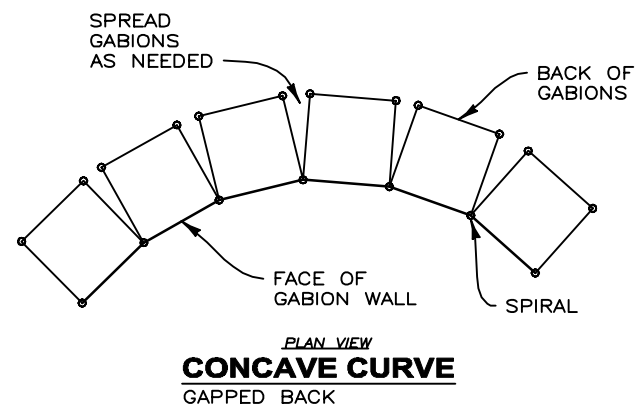
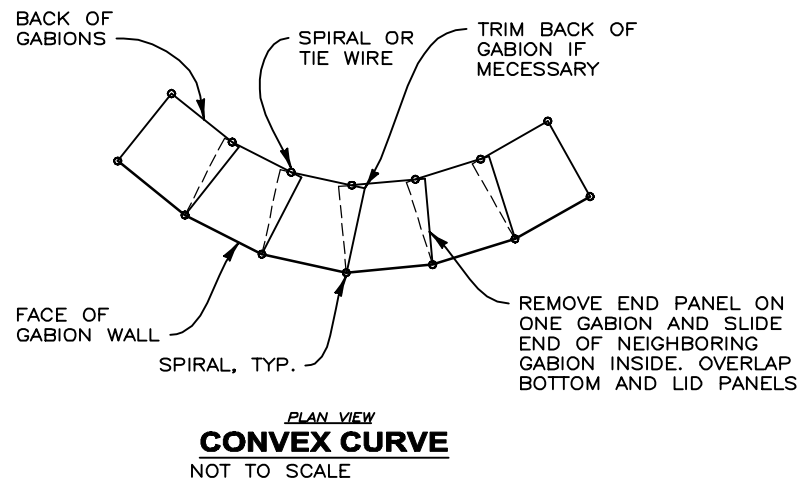
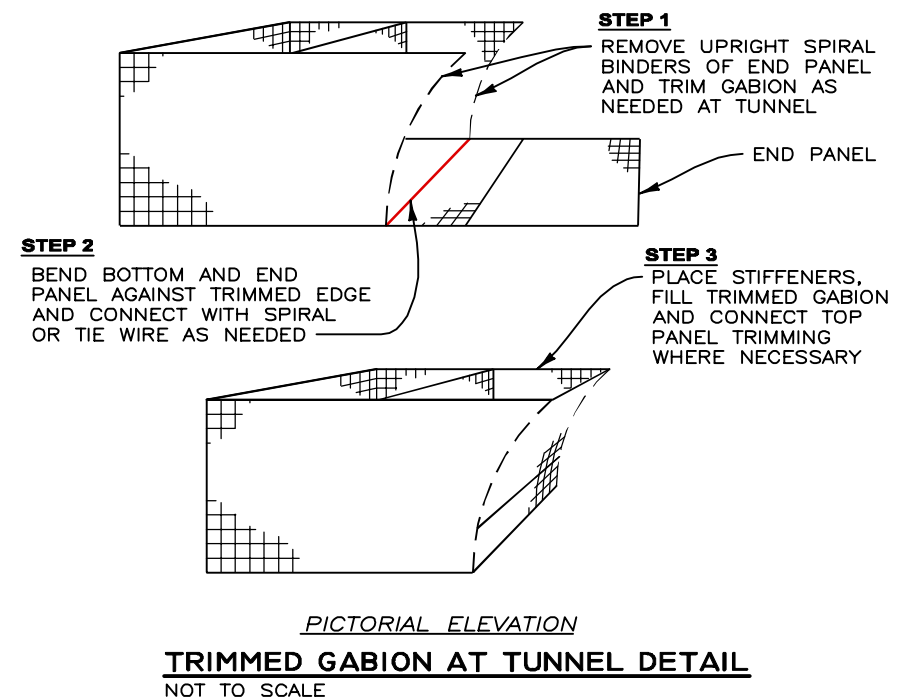
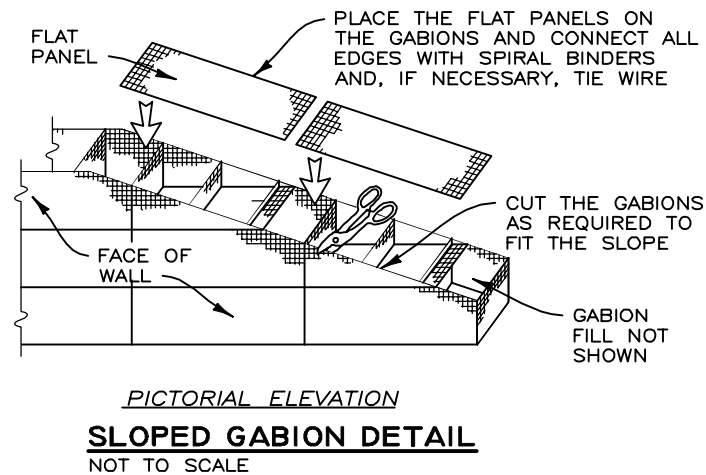
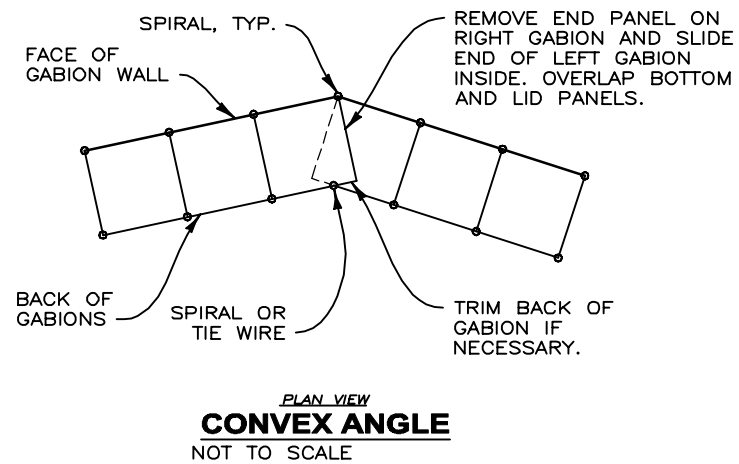
DSGN	K/JN	DR	MMD	CHK	K/JN	APVD		NO.	DATE	REVISION	BY

CITY OF ISSAQUAH
STREET EXTENSION IMPROVEMENTS
ISSAQUAH, WASHINGTON

SECTION & DETAILS

SHEET 3 OF 4
DATE 7/28/17
PROJ. NO. 017155

CAD: \\EUREKA\PROJECTS\2017\017155-SE-62ND-WALLS\DWGS\017155-62ND-STREET.DWG
(HRW 161214 AM)



THE DESIGN CONTAINED ON THESE DRAWINGS IS BASED ON INFORMATION PROVIDED BY THE OWNER. ON THE BASIS OF THIS INFORMATION, THE HILFIKER COMPANY HAS DESIGNED, AND IS RESPONSIBLE FOR THE INTERNAL STABILITY OF THE STRUCTURE ONLY. EXTERNAL STABILITY, INCLUDING FOUNDATION AND SLOPE STABILITY, IS THE RESPONSIBILITY OF THE OWNER.



EXPIRES: 2/09/2018

ARTWELD GABIONS
HILFIKER RETAINING WALLS

HW

1902 Hilfiker Lane
Eureka, CA 95503-5711
TOLL-FREE 800.762.8962
PH 707.443.5093 FAX 707.443.2891
WEBSITE www.hilfiker.com E-MAIL info@hilfiker.com

VERIFY SCALES
 BAR IS ONE INCH ON ORIGINAL DRAWING
 IF NOT ONE INCH ON THIS SHEET, ADJUST SCALES ACCORDINGLY

CONSULTING ENGINEERS & GEOLOGISTS, INC.
 WWW.SHIN-ENGR.COM
 812 W. WABASH EUREKA, CA 95501
 707-441-8855

SHIN

DESIGN	K/JN
DR	MMD
CHK	K/JN
APPROV	

CITY OF ISSAQUAH
STREET EXTENSION IMPROVEMENTS
ISSAQUAH, WASHINGTON

DETAILS

SE 62ND STREET EXTENSION IMPROVEMENTS
ISSAQUAH, WASHINGTON

SHEET
4 OF 4

DATE 7/28/17

PROJ. NO.
017155