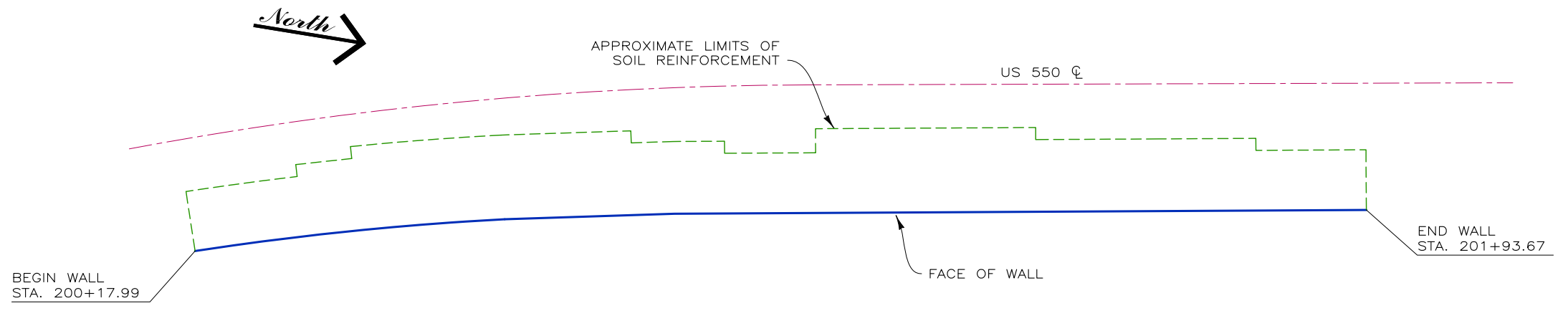
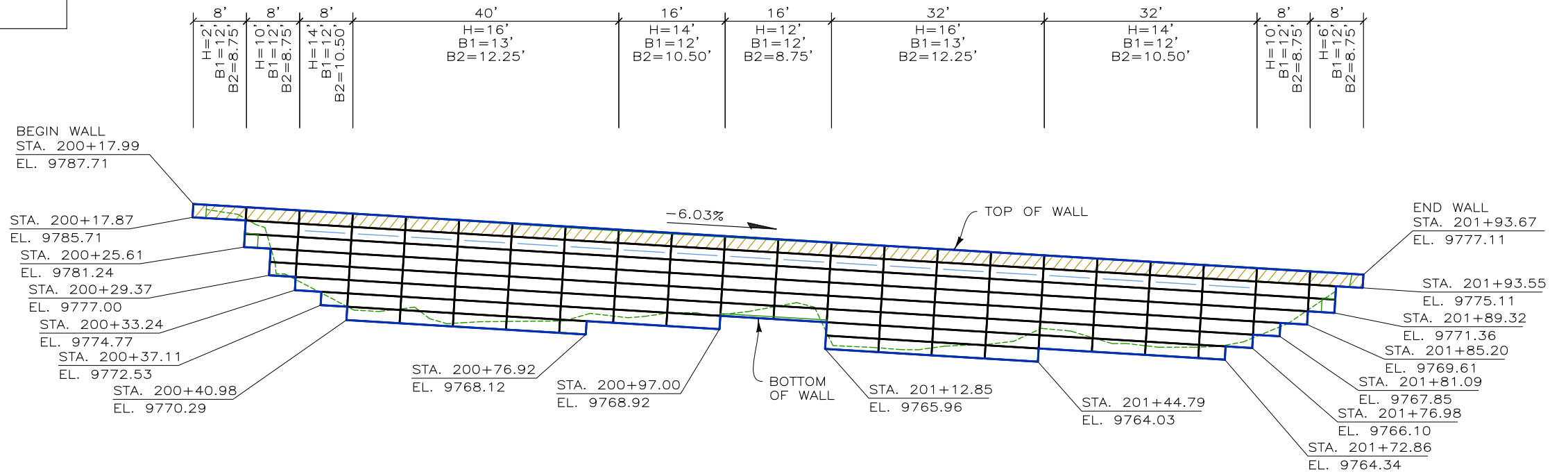


SUPPLIED MATERIAL

BASE DEPTH	CAP MAT W9.5xW6 (8"x12")	PRONGLESS MAT W9.5xW6 (8"x12")	STANDARD MAT W9.5xW6 (8"x10.5")	FLAT MAT W9.5xW6 (8"x10.5")
18'-0"	6	6	-	-
17'-6"	-	-	59	6
16'-0"	22	22	-	-
15'-9"	-	-	91	5
13'-0"	9	9	-	-
12'-3"	-	-	63	9
12'-0"	13	13	-	-
10'-6"	-	-	41	7
8'-9"	-	-	17	2
MAT TOTALS:				
CAP MATS	N= 50			
PRONGLESS MATS	N= 50			
STANDARD MATS	N=271			
FLAT MATS	N= 29			
APPROX. NEATLINE MSE BACKFILL (BY OTHERS)	2,696.15 CY			
BACKING MATS (2' HIGH)	320 EA			
BACKING MATS (3' HIGH)	10 EA			
NON-WOVEN FILTER FABRIC (7.5' WIDE)	2,700 LF			
HOG RINGS	10,000 EA			
PLIERS	5 EA			



PLAN VIEW - WALL M-06-E
SCALE: 1" = 20'



DEVELOPED ELEVATION - WALL M-06-E
SCALE: 1" = 20' (FRONT FACE)

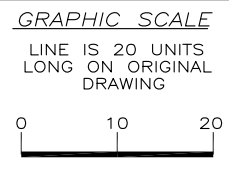
	*B1 8"x12" W9.5xW6.0 PRONGLESS AND CAP MATS
	*B2 8"x10.5" W9.5xW6.0 STANDARD MATS
	*B2 8"x10.5" W9.5xW6.0 INTERMEDIATE FLAT MATS

*ALL MATERIALS SHALL BE HOT DIP GALVANIZED, SEE SPECIAL PROVISIONS SECT. 504 [ASTM A123]

170210CW-JS 550 MOLAS PASS

THIS DRAWING IS FURNISHED SOLELY FOR THE USE OF OR IN CONNECTION WITH THIS PROJECT AND THE PROPRIETARY INFORMATION SHOWN HEREON IS NOT TO BE TRANSMITTED TO ANY OTHER ORGANIZATION WITHOUT SPECIFIC AUTHORIZATION BY THE HILFIKER COMPANY. HILFIKER RETAINING WALLS ARE PROTECTED BY ONE OR MORE OF THE FOLLOWING PATENTS: 243,613; 243,697; 288,616; 4,117,686; 4,329,089; 4,324,508; 4,391,557; 4,505,621; 4,343,318; 4,661,023; 4,856,939; 4,929,125; 5,076,735; 5,647,695; 5,722,799; 5,733,072; 6,357,970B1; 6,874,975B2; 7,033,118B2; AND OTHERS. OTHER PATENTS PENDING (2008)

REV. NO.	DATE	BY	DESCRIPTION
1	28 MAR 17	DH	ADD TYPICAL SECTIONS AND DETAILS
2	17 MAY 17	DH	EDITS AS PER YEH AND ASSOCIATES, INC.
			REVIEW COMMENTS RECEIVED 4 APR 17
			CONCERNING STA./EL. AND GALVANIZING.



PROJ. MGR. SCB
ENGINEER YEH
CADD BY DH

HILFIKER RETAINING WALLS

1902 Hilfiker Lane
Eureka, CA 95503-5711
TOLL-FREE 800.762.8962
PH 707.443.5093 FAX 707.443.2891
WEBSITE www.hilfiker.com E-MAIL info@hilfiker.com

DWG DATE	15 FEB 17
REVISION DATE	17 MAY 17
SCALE	NOTED

ERECTION DRAWINGS

WELDED WIRE WALL

US 550 MOLAS PASS

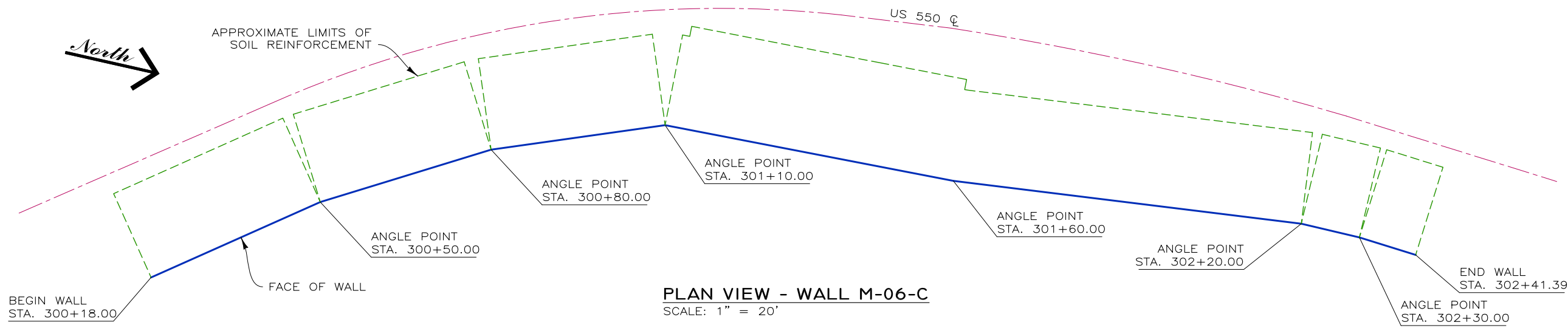
COLORADO DEPARTMENT OF TRANSPORTATION
SH 550 MOLAS PASS, COLORADO

DEVELOPED ELEVATION AND PLAN VIEW

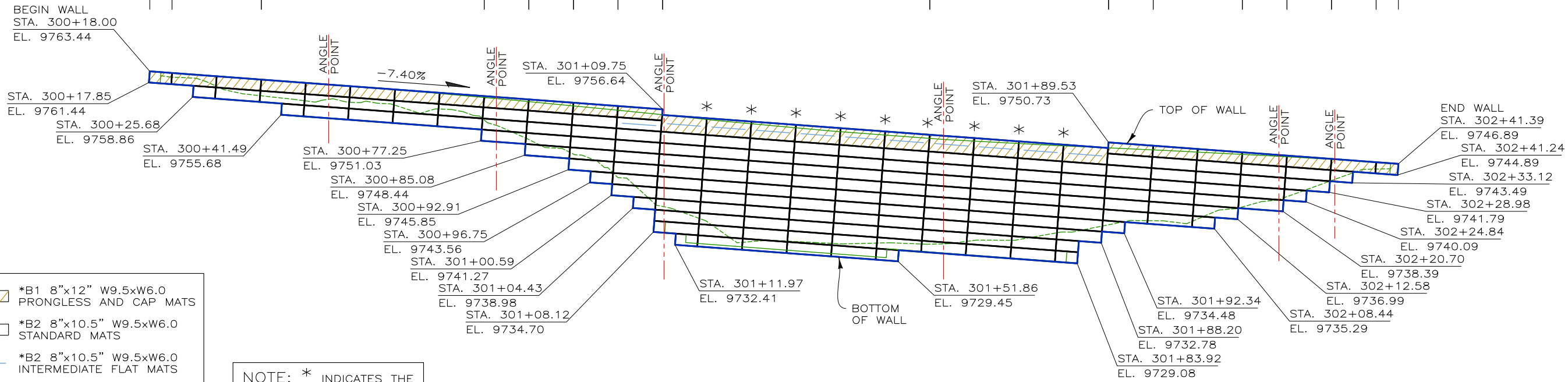
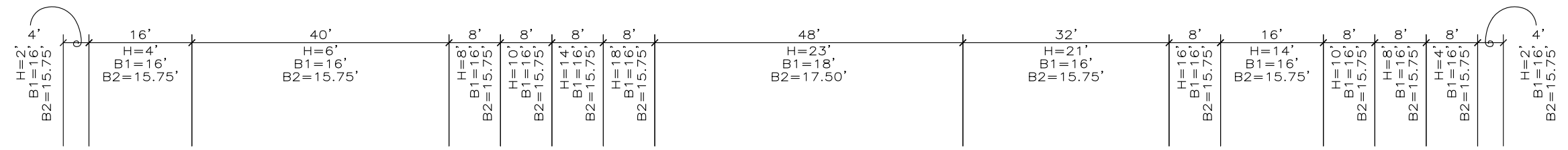
PROJECT NO. 170210CW
SHEET 1 OF 5

CONT ID: C20741, FAP# NHPP5502-087





PLAN VIEW - WALL M-06-C
SCALE: 1" = 20'



DEVELOPED ELEVATION - WALL M-06-C
SCALE: 1" = 20' (FRONT FACE)

- *B1 8"x12" W9.5xW6.0 PRONGLESS AND CAP MATS
- *B2 8"x10.5" W9.5xW6.0 STANDARD MATS
- *B2 8"x10.5" W9.5xW6.0 INTERMEDIATE FLAT MATS

NOTE: * INDICATES THE APPROXIMATE LOCATION OF THE MIDDLE OF EACH 3' BACKING MAT

*ALL MATERIALS SHALL BE HOT DIP GALVANIZED, SEE SPECIAL PROVISIONS SECT. 504 [ASTM A123]

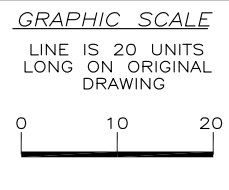
CONT ID: C20741, FAP# NHPP5502-087



170210CW-US 550 MOLAS PASS

THIS DRAWING IS FURNISHED SOLELY FOR THE USE OF OR IN CONNECTION WITH THIS PROJECT AND THE PROPRIETARY INFORMATION SHOWN HEREON IS NOT TO BE TRANSMITTED TO ANY OTHER ORGANIZATION WITHOUT SPECIFIC AUTHORIZATION BY THE HILFIKER COMPANY. HILFIKER RETAINING WALLS ARE PROTECTED BY ONE OR MORE OF THE FOLLOWING PATENTS: 243,613; 243,697; 288,616; 4,117,686; 4,329,089; 4,324,508; 4,391,557; 4,505,621; 4,343,318; 4,661,023; 4,856,939; 4,929,125; 5,076,735; 5,647,695; 5,722,799; 5,733,072; 6,357,970B1; 6,874,975B2; 7,033,118B2; AND OTHERS. OTHER PATENTS PENDING (2008)

REV. NO.	DATE	BY	DESCRIPTION
1	28 MAR 17	DH	ADD TYPICAL SECTIONS AND DETAILS
2	17 MAY 17	DH	EDITS AS PER YEH AND ASSOCIATES, INC.
			REVIEW COMMENTS RECEIVED 4 APR 17 CONCERNING STA./EL. AND GALVANIZING.



PROJ. MGR. SCB
ENGINEER. YEH
CADD BY. DH

HILFIKER RETAINING WALLS

1902 Hilfiker Lane
Eureka, CA 95503-5711
TOLL-FREE 800.762.8962
PH 707.443.5093 FAX 707.443.2891
WEB SITE www.hilfiker.com E-MAIL info@hilfiker.com

DWG DATE 15 FEB 17
REVISION DATE 17 MAY 17
SCALE NOTED

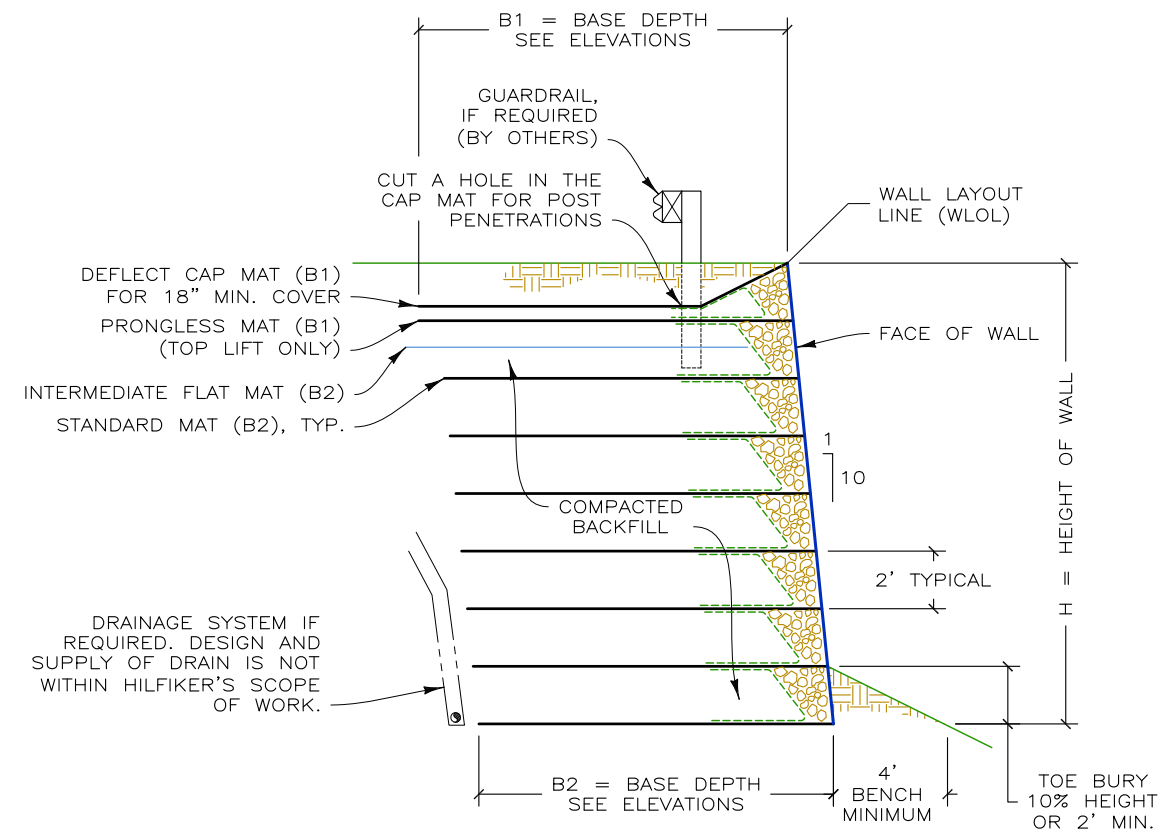
ERECTION DRAWINGS

WELDED WIRE WALL
US 550 MOLAS PASS
COLORADO DEPARTMENT OF TRANSPORTATION
SH 550 MOLAS PASS, COLORADO

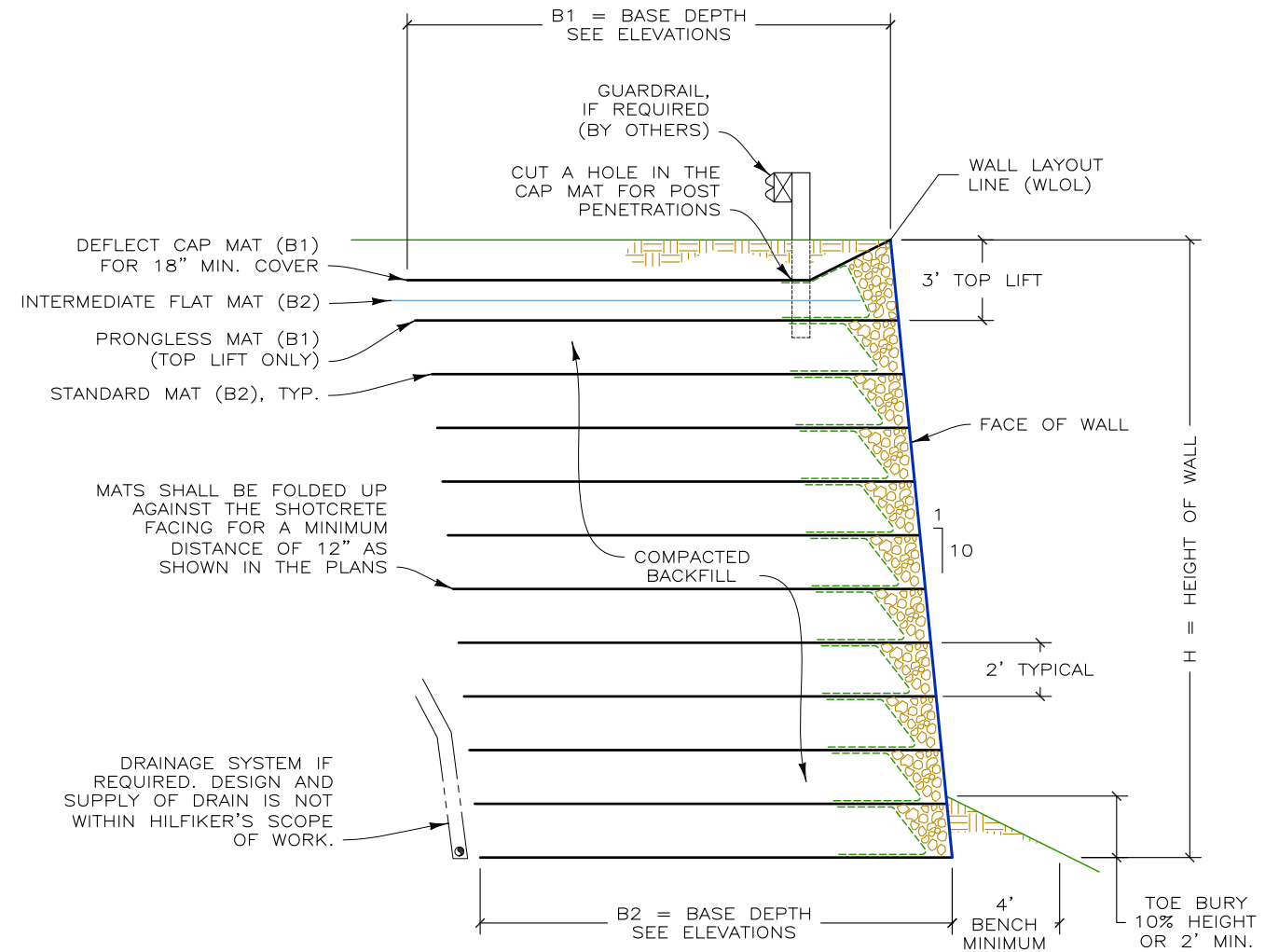
DEVELOPED ELEVATION AND PLAN VIEW

PROJECT NO. 170210CW
SHEET 2 OF 5

170210CW-US 550 MOLAS PASS



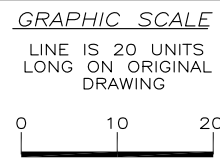
TYPICAL SECTION (WALL M-06-E)
SCALE: 3" = 20'



TYPICAL SECTION (WALL M-06-C)
SCALE: 3" = 20'

THIS DRAWING IS FURNISHED SOLELY FOR THE USE OF OR IN CONNECTION WITH THIS PROJECT AND THE PROPRIETARY INFORMATION SHOWN HEREON IS NOT TO BE TRANSMITTED TO ANY OTHER ORGANIZATION WITHOUT SPECIFIC AUTHORIZATION BY THE HILFIKER COMPANY. HILFIKER RETAINING WALLS ARE PROTECTED BY ONE OR MORE OF THE FOLLOWING PATENTS: 243,613; 243,697; 288,616; 4,117,686; 4,329,089; 4,324,508; 4,391,557; 4,505,621; 4,343,318; 4,661,023; 4,856,939; 4,929,125; 5,076,735; 5,647,695; 5,722,799; 5,733,072; 6,357,970B1; 6,874,975B2; 7,033,118B2; AND OTHERS. OTHER PATENTS PENDING (2008)

REV. NO.	DATE	BY	DESCRIPTION
1	28 MAR 17	DH	ADD TYPICAL SECTIONS AND DETAILS
2	17 MAY 17	DH	EDITS AS PER YEH AND ASSOCIATES, INC.
			REVIEW COMMENTS RECEIVED 4 APR 17
			CONCERNING STA./EL. AND GALVANIZING.



PROJ. MGR.	SCB
ENGINEER	YEH
CADD BY	DH

HILFIKER RETAINING WALLS

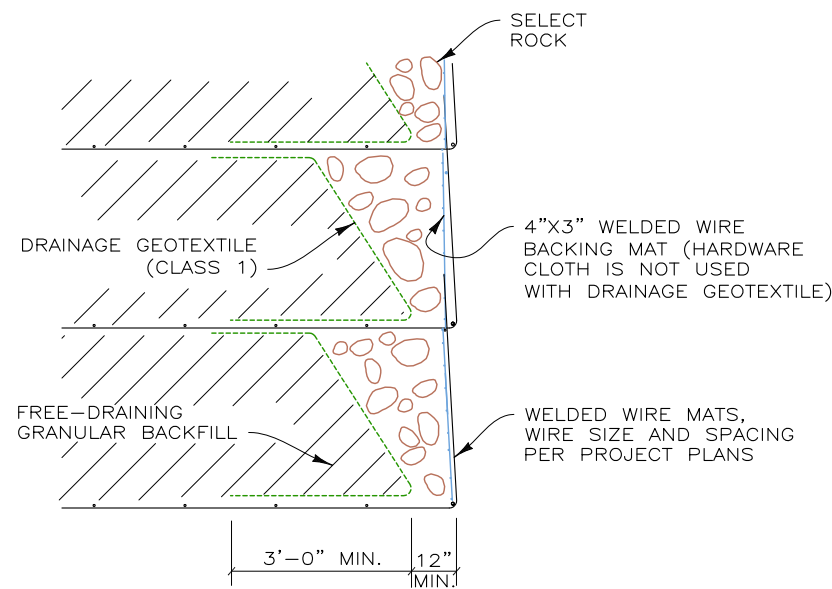
1902 Hilfiker Lane
Eureka, CA 95503-5711
TOLL-FREE 800.762.8962
PH 707.443.5093 FAX 707.443.2891
WEBSITE www.hilfiker.com E-MAIL Info@hilfiker.com

DWG DATE	15 FEB 17
REVISION DATE	17 MAY 17
SCALE	NOTED

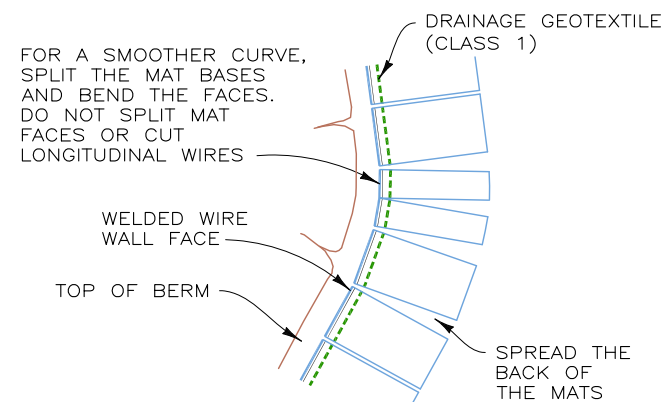
ERECTION DRAWINGS
WELDED WIRE WALL
US 550 MOLAS PASS
COLORADO DEPARTMENT OF TRANSPORTATION
SH 550 MOLAS PASS, COLORADO
TYPICAL SECTIONS

PROJECT NO.	170210CW
SHEET	3
OF	5

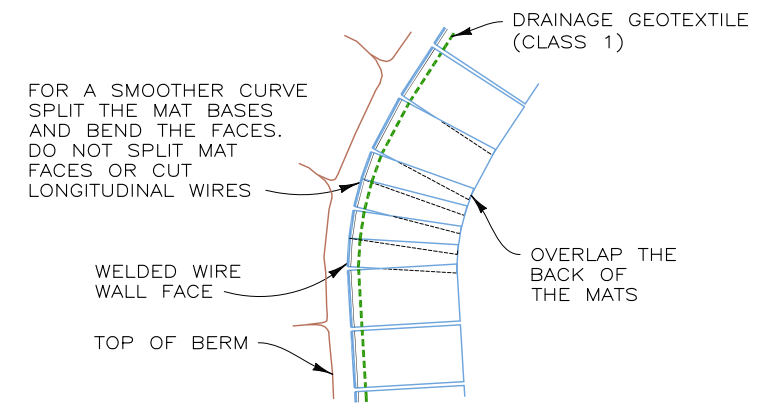
CONT ID: C20741, FAP# NHPP5502-087



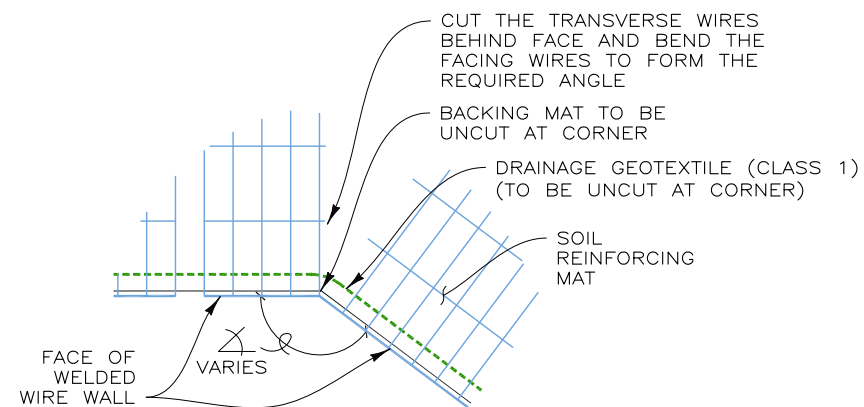
SECTION
ROCK FACING DETAIL
NOT TO SCALE



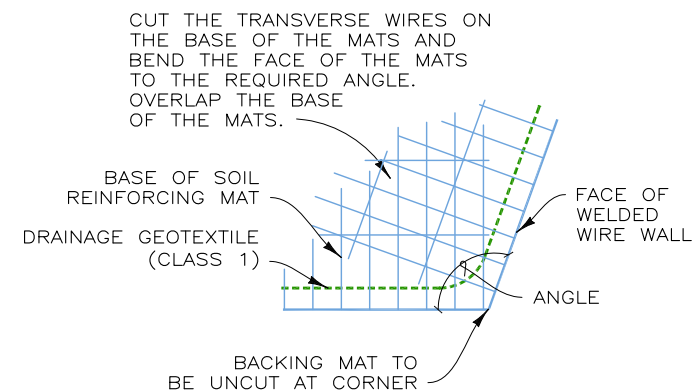
PLAN VIEW
CONCAVE CURVE
NOT TO SCALE



PLAN VIEW
CONVEX CURVE
NOT TO SCALE



PLAN VIEW
CONCAVE ANGLE DETAIL
NOT TO SCALE

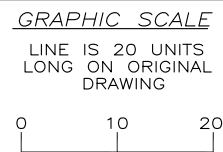


PLAN VIEW
OBTUSE CONVEX ANGLE
NOT TO SCALE

170210CW-US 550 MOLAS PASS

THIS DRAWING IS FURNISHED SOLELY FOR THE USE OF OR IN CONNECTION WITH THIS PROJECT AND THE PROPRIETARY INFORMATION SHOWN HEREON IS NOT TO BE TRANSMITTED TO ANY OTHER ORGANIZATION WITHOUT SPECIFIC AUTHORIZATION BY THE HILFIKER COMPANY. HILFIKER RETAINING WALLS ARE PROTECTED BY ONE OR MORE OF THE FOLLOWING PATENTS: 243,613; 243,697; 288,616; 4,117,686; 4,329,089; 4,324,508; 4,391,557; 4,505,621; 4,343,318; 4,661,023; 4,856,939; 4,929,125; 5,076,735; 5,647,695; 5,722,799; 5,733,072; 6,357,970B1; 6,874,975B2; 7,033,118B2; AND OTHERS. OTHER PATENTS PENDING (2008)

REV. NO.	DATE	BY	DESCRIPTION
1	28 MAR 17	DH	ADD TYPICAL SECTIONS AND DETAILS
2	17 MAY 17	DH	EDITS AS PER YEH AND ASSOCIATES, INC.
			REVIEW COMMENTS RECEIVED 4 APR 17
			CONCERNING STA./EL. AND GALVANIZING.



PROJ. MGR.
SCB
ENGINEER
YEH
CADD BY
DH

HILFIKER RETAINING WALLS

1902 Hilfiker Lane
Eureka, CA 95503-5711
TOLL-FREE 800.762.8962
PH 707.443.5093 FAX 707.443.2891
WEBSITE www.hilfiker.com E-MAIL Info@hilfiker.com

DWG DATE
15 FEB 17
REVISION DATE
17 MAY 17
SCALE
NOTED

ERECTION DRAWINGS
WELDED WIRE WALL
US 550 MOLAS PASS
COLORADO DEPARTMENT OF TRANSPORTATION
SH 550 MOLAS PASS, COLORADO
TYPICAL DETAILS

PROJECT NO.
170210CW
SHEET
4
OF 5

CONT ID: C20741, FAP# NHPP5502-087

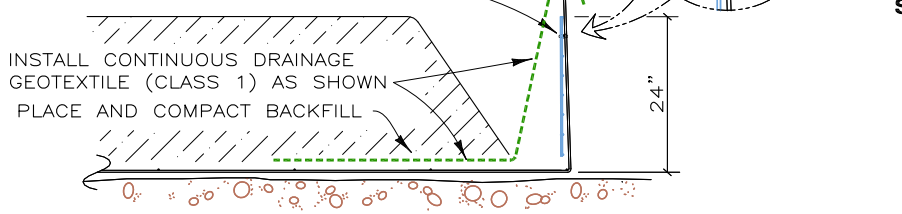
STEP 1

PLACE THE FIRST COURSE OF SOIL REINFORCEMENT MATS ON PREPARED FOUNDATION



STEP 2

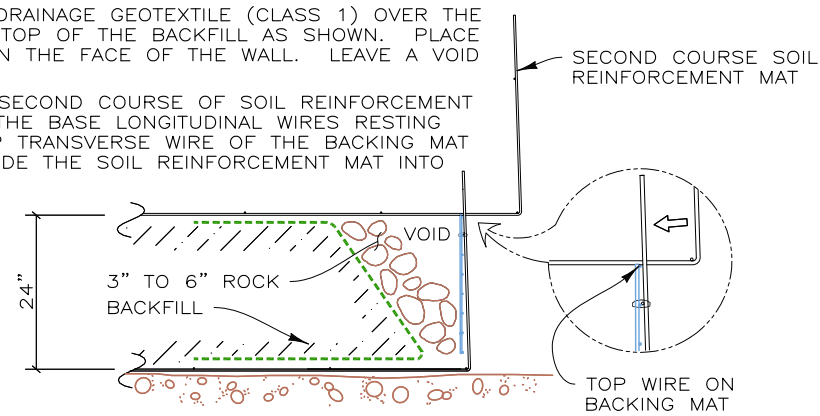
PLACE THE BACKING MAT AGAINST THE INSIDE FACE OF THE SOIL REINFORCEMENT MAT. CLIP THE SECOND-TO-TOP TRANSVERSE WIRE ON THE BACKING MAT TO THE TOP TRANSVERSE WIRE ON THE SOIL REINFORCEMENT MAT.



STEP 3

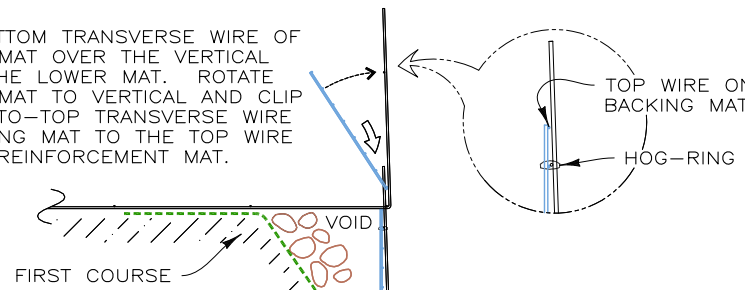
BRING THE DRAINAGE GEOTEXTILE (CLASS 1) OVER THE FRONT AND TOP OF THE BACKFILL AS SHOWN. PLACE THE ROCK IN THE FACE OF THE WALL. LEAVE A VOID AS SHOWN.

PLACE THE SECOND COURSE OF SOIL REINFORCEMENT MATS WITH THE BASE LONGITUDINAL WIRES RESTING ON THE TOP TRANSVERSE WIRE OF THE BACKING MAT BELOW. SLIDE THE SOIL REINFORCEMENT MAT INTO ALIGNMENT.



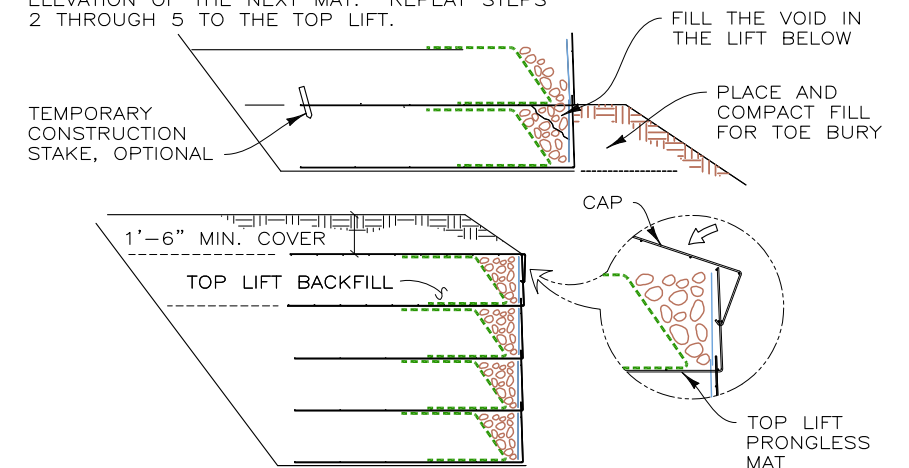
STEP 4

HOOK THE BOTTOM TRANSVERSE WIRE OF THE BACKING MAT OVER THE VERTICAL PRONGS ON THE LOWER MAT. ROTATE THE BACKING MAT TO VERTICAL AND CLIP THE SECOND-TO-TOP TRANSVERSE WIRE ON THE BACKING MAT TO THE TOP WIRE ON THE SOIL REINFORCEMENT MAT.



STEP 5

INSTALL THE DRAINAGE GEOTEXTILE (CLASS 1) AS IN STEPS 2 AND 3. PLACE AND COMPACT THE BACKFILL AND ROCK TO THE BASE ELEVATION OF THE NEXT MAT. REPEAT STEPS 2 THROUGH 5 TO THE TOP LIFT.



STEP 6: TOP LIFT

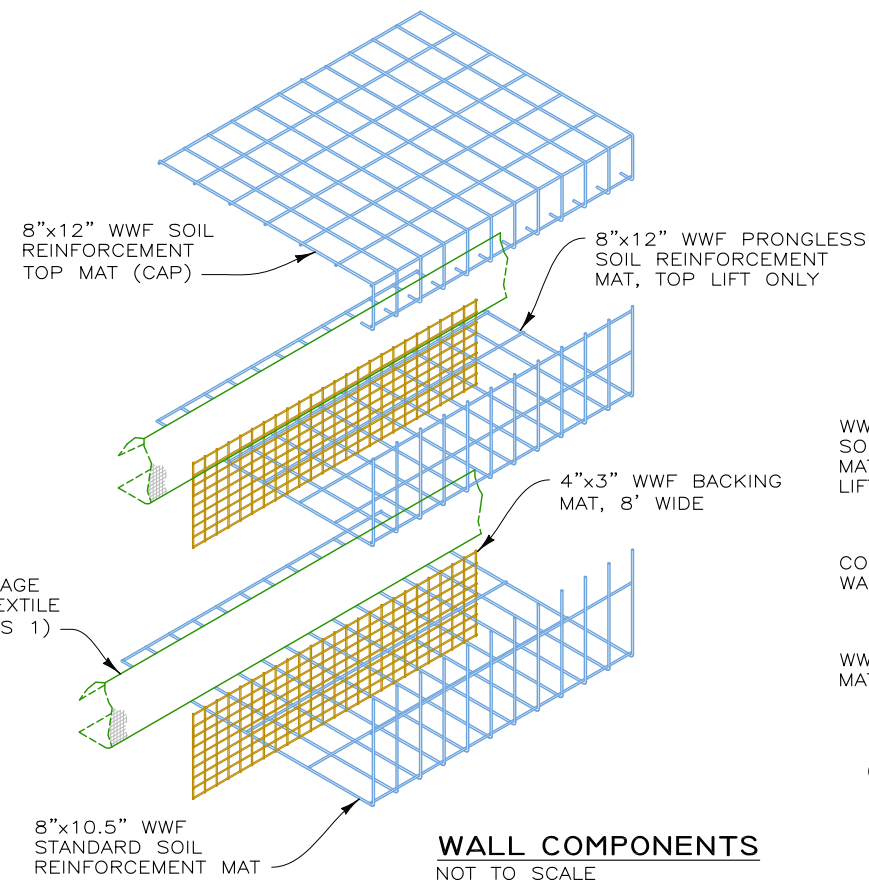
PLACE THE TOP LIFT PRONGLESS MAT, BACKING MAT AND FILTER FABRIC. PLACE AND COMPACT BACKFILL AND ROCK IN THE TOP LIFT. HOOK THE CAP OVER THE MIDDLE TRANSVERSE WIRE ON THE PRONGLESS MAT, AND ROTATE INTO PLACE. PLACE AND COMPACT COVER OVER TOP MAT TO 1'-6" MINIMUM DEPTH.

CONSTRUCTION SEQUENCE

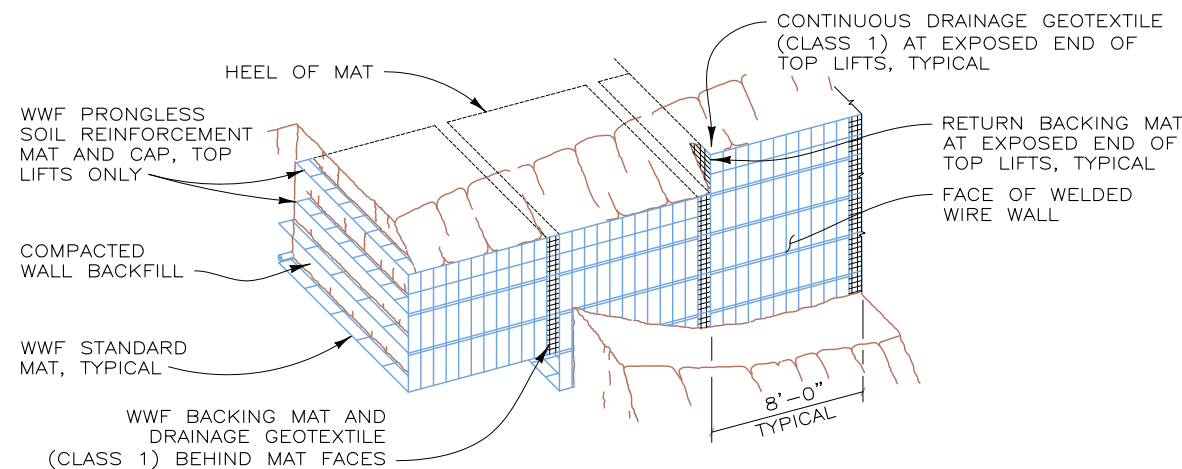
NOT TO SCALE

PROJECT-SPECIFIC NOTES:

1. REFERENCE DRAWINGS: BASED ON PROJECT PLANS FROM COLORADO DEPARTMENT OF TRANSPORTATION DATED JANUARY 13, 2017. SHEETS 28, 29, 30, 31, 32, 33 AND 34.
2. BLACK AND WHITE REPRODUCTION OF THIS COLOR ORIGINAL MAY REDUCE ITS EFFECTIVENESS AND LEAD TO INCORRECT INTERPRETATION.
3. IT IS ASSUMED THAT ALL MATERIALS, BACKFILL AND CONSTRUCTION METHODS FOR HILFIKER M.S.E. WALLS WILL CONFORM TO HILFIKER'S SPECIFICATIONS AND/OR THOSE OF THE HILFIKER ENGINEERING CONSULTANT.
4. THIS IS NOT AN ENGINEERED SUBMITTAL. ALL INFORMATION HEREON IS DERIVED FROM THE REFERENCE DRAWINGS, AND IS SUBJECT TO GEOMETRIC AND GEOTECHNICAL CONFIRMATION. THE APPLICABLE HILFIKER CONSTRUCTION GUIDE AND SPECIFICATIONS ARE AN INTEGRAL PART OF THIS SUBMITTAL.
5. UPON ENGINEERED DESIGN, HILFIKER RETAINING WALLS SHALL BE RESPONSIBLE ONLY FOR THE INTERNAL STABILITY OF THE RETAINING WALL, AND NOT FOR GLOBAL STABILITY OR FOUNDATION BEARING CAPACITY. THE OWNER/CONTRACTOR SHALL BE RESPONSIBLE FOR ALL JOB SITE DRAINAGE, SAFETY AND FALL PROTECTION PROVISIONS FOR WORKERS IN COMPLIANCE WITH OSHA AND ANY OTHER APPLICABLE REQUIREMENTS.
6. WALL DESIGN SHALL REQUIRE A NON-SATURATED BACKFILL. SURFACE AND SUBSURFACE DRAINAGE CONTROL MAY BE REQUIRED TO PREVENT SATURATION OF THE BACKFILL OR TO RELIEVE HYDROSTATIC PRESSURES. DRAINAGE CONTROL SHALL BE AS SPECIFIED IN THE OWNER'S PROJECT PLANS AND SPECIFICATIONS, OR AS DIRECTED BY THE OWNER'S ENGINEER.



WALL COMPONENTS
NOT TO SCALE

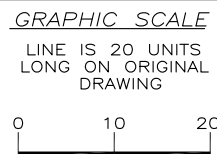


PICTORIAL ELEVATION
NOT TO SCALE

170210CW-US 550 MOLAS PASS

THIS DRAWING IS FURNISHED SOLELY FOR THE USE OF OR IN CONNECTION WITH THIS PROJECT AND THE PROPRIETARY INFORMATION SHOWN HEREON IS NOT TO BE TRANSMITTED TO ANY OTHER ORGANIZATION WITHOUT SPECIFIC AUTHORIZATION BY THE HILFIKER COMPANY. HILFIKER RETAINING WALLS ARE PROTECTED BY ONE OR MORE OF THE FOLLOWING PATENTS: 2,433,613; 2,433,697; 2,888,616; 4,117,686; 4,329,089; 4,324,508; 4,391,557; 4,505,621; 4,343,318; 4,661,023; 4,856,939; 4,929,125; 5,076,735; 5,647,695; 5,722,799; 5,733,072; 6,357,970B1; 6,874,975B2; 7,033,118B2; AND OTHERS. OTHER PATENTS PENDING (2008)

REV.NO.	DATE	BY	DESCRIPTION
1	28 MAR 17	DH	ADD TYPICAL SECTIONS AND DETAILS
2	17 MAY 17	DH	EDITS AS PER YEH AND ASSOCIATES, INC.
			REVIEW COMMENTS RECEIVED 4 APR 17 CONCERNING STA./EL. AND GALVANIZING.



PROJ. MGR.
SCB
ENGINEER
YEH
CADD BY
DH

HILFIKER RETAINING WALLS

1902 Hilfiker Lane
Eureka, CA 95503-5711
TOLL-FREE 800.762.8962
PH 707.443.5093 FAX 707.443.2891
WEBSITE www.hilfiker.com E-MAIL info@hilfiker.com

DWG DATE
15 FEB 17
REVISION DATE
17 MAY 17
SCALE
NOTED

ERECTION DRAWINGS
WELDED WIRE WALL
US 550 MOLAS PASS
COLORADO DEPARTMENT OF TRANSPORTATION
SH 550 MOLAS PASS, COLORADO

PROJECT NO.
170210CW
SHEET
5
OF 5

CONT ID: C20741, FAP# NHPP5502-087