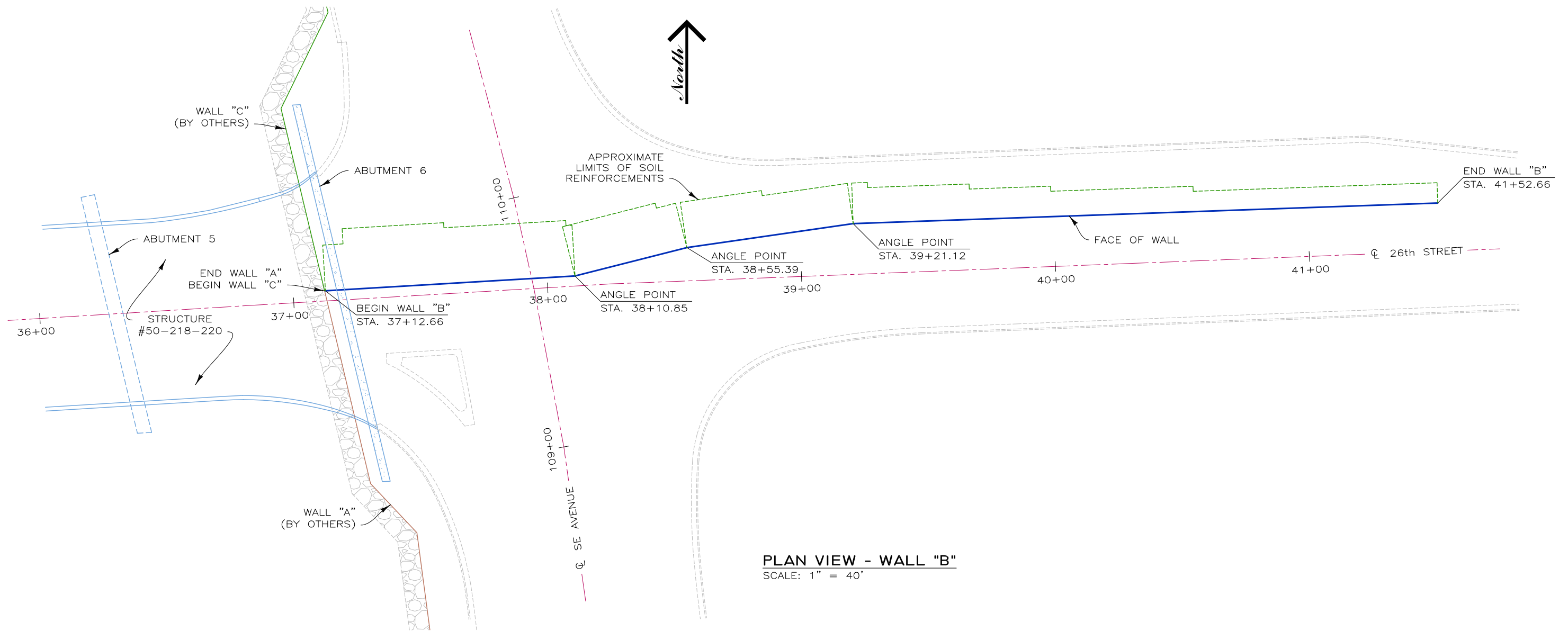


190104BW - 26TH STREET & SOUTHEASTERN AVE.



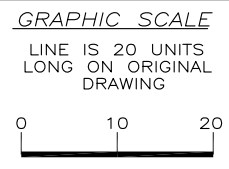
PLAN VIEW - WALL "B"
SCALE: 1" = 40'

ESTIMATED QUANTITIES	
WALL NO.	FACE AREA
WALL B	6,888 SQ. FT.
WALL I	2,304 SQ. FT.
TOTALS	9,192 SQ. FT.

BID DUE: 23 JAN 19

THIS DRAWING IS FURNISHED SOLELY FOR THE USE OF OR IN CONNECTION WITH THIS PROJECT AND THE PROPRIETARY INFORMATION SHOWN HEREON IS NOT TO BE TRANSMITTED TO ANY OTHER ORGANIZATION WITHOUT SPECIFIC AUTHORIZATION BY THE HILFIKER COMPANY. HILFIKER RETAINING WALLS ARE PROTECTED BY ONE OR MORE OF THE FOLLOWING PATENTS: 243,613; 243,697; 288,616; 4,117,686; 4,329,089; 4,324,508; 4,391,557; 4,505,621; 4,343,318; 4,661,023; 4,856,939; 4,929,125; 5,076,735; 5,647,695; 5,722,799; 5,733,072; 6,357,970B1; 6,874,975B2; 7,033,118B2; AND OTHERS. OTHER PATENTS PENDING (2008)

REV. NO.	DATE	BY	DESCRIPTION



PROJ. MGR.
LB
ENGINEER
CADD BY
DH

HILFIKER RETAINING WALLS

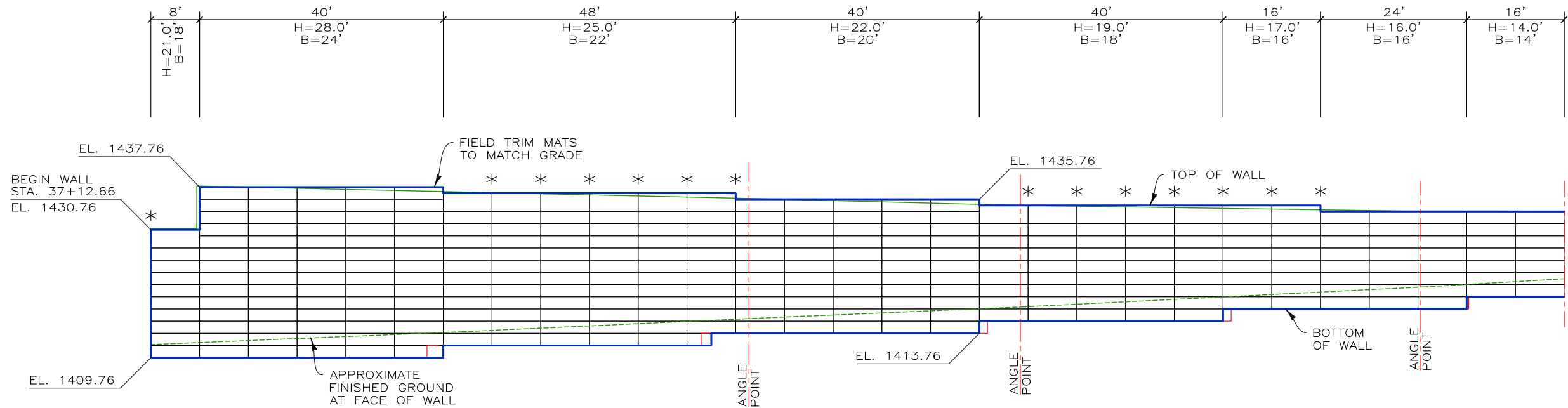
1902 Hilfiker Lane
Eureka, CA 95503-5711
TOLL-FREE 800.762.8962
PH 707.443.5093 FAX 707.443.2891
WEBSITE www.hilfiker.com E-MAIL Info@hilfiker.com

DWG DATE
21 JAN 19
REVISION DATE
SCALE
NOTED

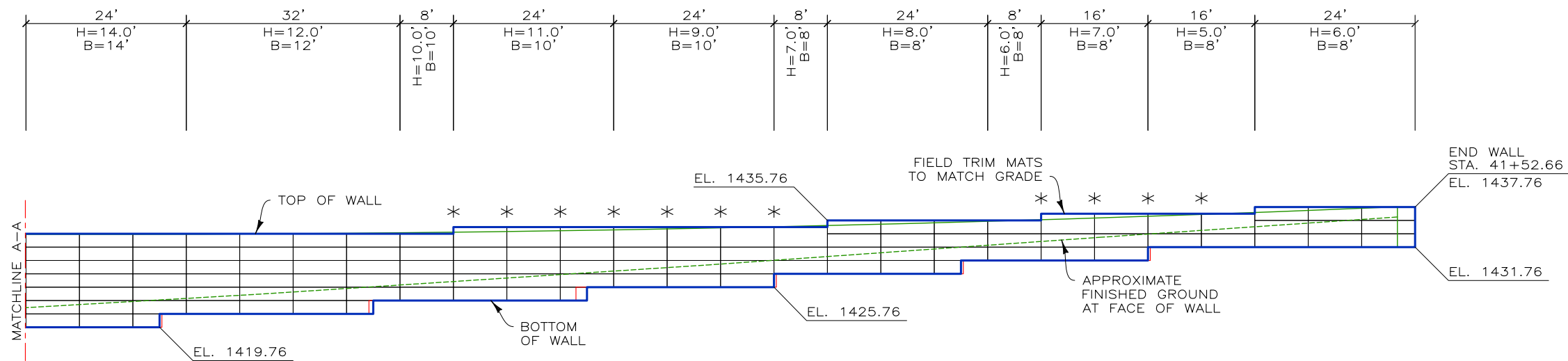
FOR BIDDING PURPOSES ONLY
WELDED WIRE WALL
26TH STREET & SOUTHEASTERN AVE.
SOUTH DAKOTA DEPARTMENT OF TRANSPORTATION
SIOUX FALLS, SOUTH DAKOTA
PLAN VIEW

PROJECT NO.
190104BW
SHEET
1
OF 5

190104BW-26TH STREET & SOUTHEASTERN AVE.



DEVELOPED ELEVATION - WALL "B"
SCALE: 1" = 20'



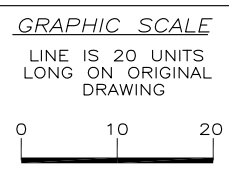
DEVELOPED ELEVATION - WALL "B" (CONT'D)
SCALE: 1" = 20'

NOTE: * INDICATES THE APPROXIMATE LOCATION OF THE MIDDLE OF EACH 3' BACKING MAT

BID DUE: 23 JAN 19

THIS DRAWING IS FURNISHED SOLELY FOR THE USE OF OR IN CONNECTION WITH THIS PROJECT AND THE PROPRIETARY INFORMATION SHOWN HEREON IS NOT TO BE TRANSMITTED TO ANY OTHER ORGANIZATION WITHOUT SPECIFIC AUTHORIZATION BY THE HILFIKER COMPANY. HILFIKER RETAINING WALLS ARE PROTECTED BY ONE OR MORE OF THE FOLLOWING PATENTS: 243,613; 243,697; 288,616; 4,117,686; 4,329,089; 4,324,508; 4,391,557; 4,505,621; 4,343,318; 4,661,023; 4,856,939; 4,929,125; 5,076,735; 5,647,695; 5,722,799; 5,733,072; 6,357,970B1; 6,874,975B2; 7,033,118B2; AND OTHERS. OTHER PATENTS PENDING (2008)

REV. NO.	DATE	BY	DESCRIPTION



PROJ. MGR.
LB
ENGINEER
CADD BY
DH

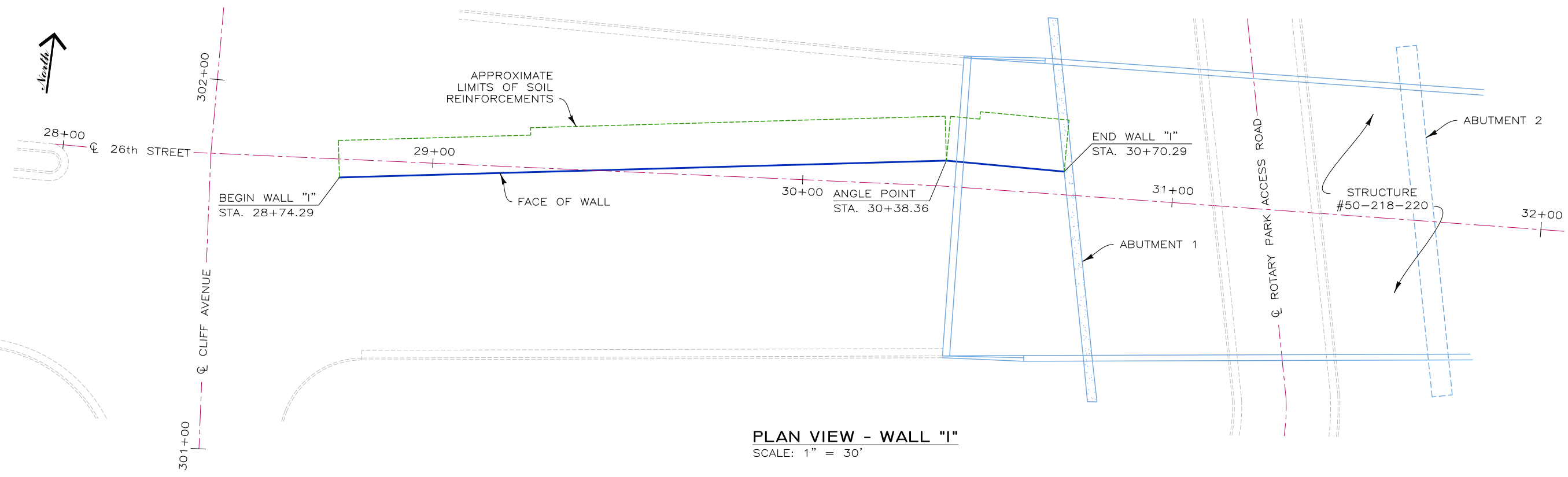
HILFIKER RETAINING WALLS

1902 Hilfiker Lane
Eureka, CA 95503-5711
TOLL-FREE 800.762.8962
PH 707.443.5093 FAX 707.443.2891
WEBSITE www.hilfiker.com E-MAIL info@hilfiker.com

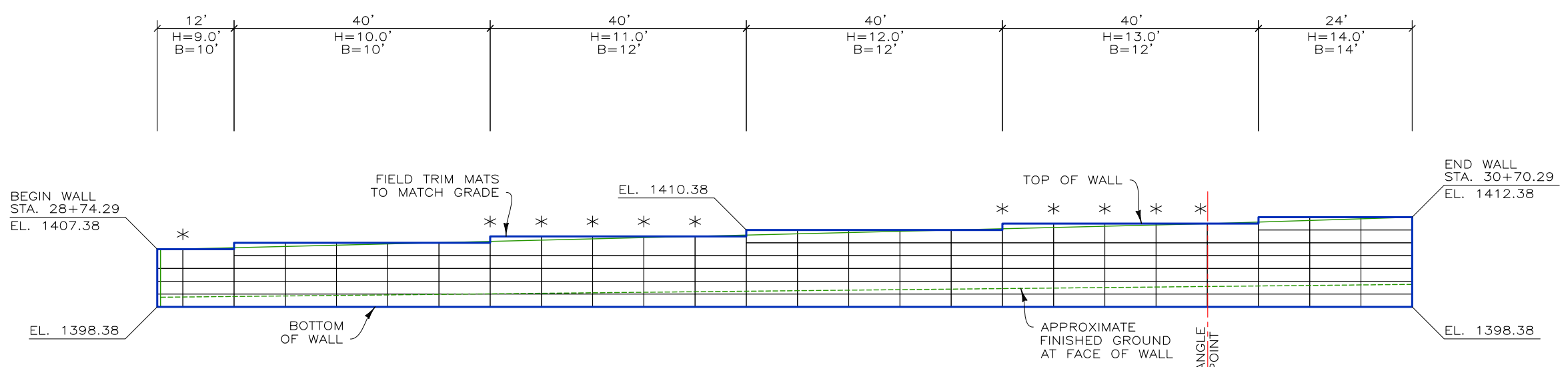
DWG DATE
21 JAN 19
REVISION DATE
SCALE
NOTED

FOR BIDDING PURPOSES ONLY
WELDED WIRE WALL
26TH STREET & SOUTHEASTERN AVE.
SOUTH DAKOTA DEPARTMENT OF TRANSPORTATION
SIOUX FALLS, SOUTH DAKOTA
DEVELOPED ELEVATION

PROJECT NO.
190104BW
SHEET
2
OF
5



PLAN VIEW - WALL "I"
SCALE: 1" = 30'



DEVELOPED ELEVATION - WALL "I"
SCALE: 1" = 20'

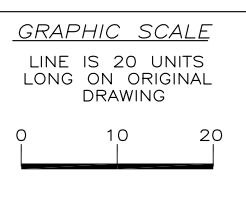
NOTE: * INDICATES THE APPROXIMATE LOCATION OF THE MIDDLE OF EACH 3' BACKING MAT

190104BW - 26TH STREET & SOUTHEASTERN AVE.

BID DUE: 23 JAN 19

THIS DRAWING IS FURNISHED SOLELY FOR THE USE OF OR IN CONNECTION WITH THIS PROJECT AND THE PROPRIETARY INFORMATION SHOWN HEREON IS NOT TO BE TRANSMITTED TO ANY OTHER ORGANIZATION WITHOUT SPECIFIC AUTHORIZATION BY THE HILFIKER COMPANY. HILFIKER RETAINING WALLS ARE PROTECTED BY ONE OR MORE OF THE FOLLOWING PATENTS: 243,613; 243,697; 288,616; 4,117,686; 4,329,089; 4,324,508; 4,391,557; 4,505,621; 4,343,318; 4,661,023; 4,856,939; 4,929,125; 5,076,735; 5,647,695; 5,722,799; 5,733,072; 6,357,970B1; 6,874,975B2; 7,033,118B2; AND OTHERS. OTHER PATENTS PENDING (2008)

REV. NO.	DATE	BY	DESCRIPTION



PROJ. MGR.
LB
ENGINEER
CADD BY
DH

HILFIKER RETAINING WALLS

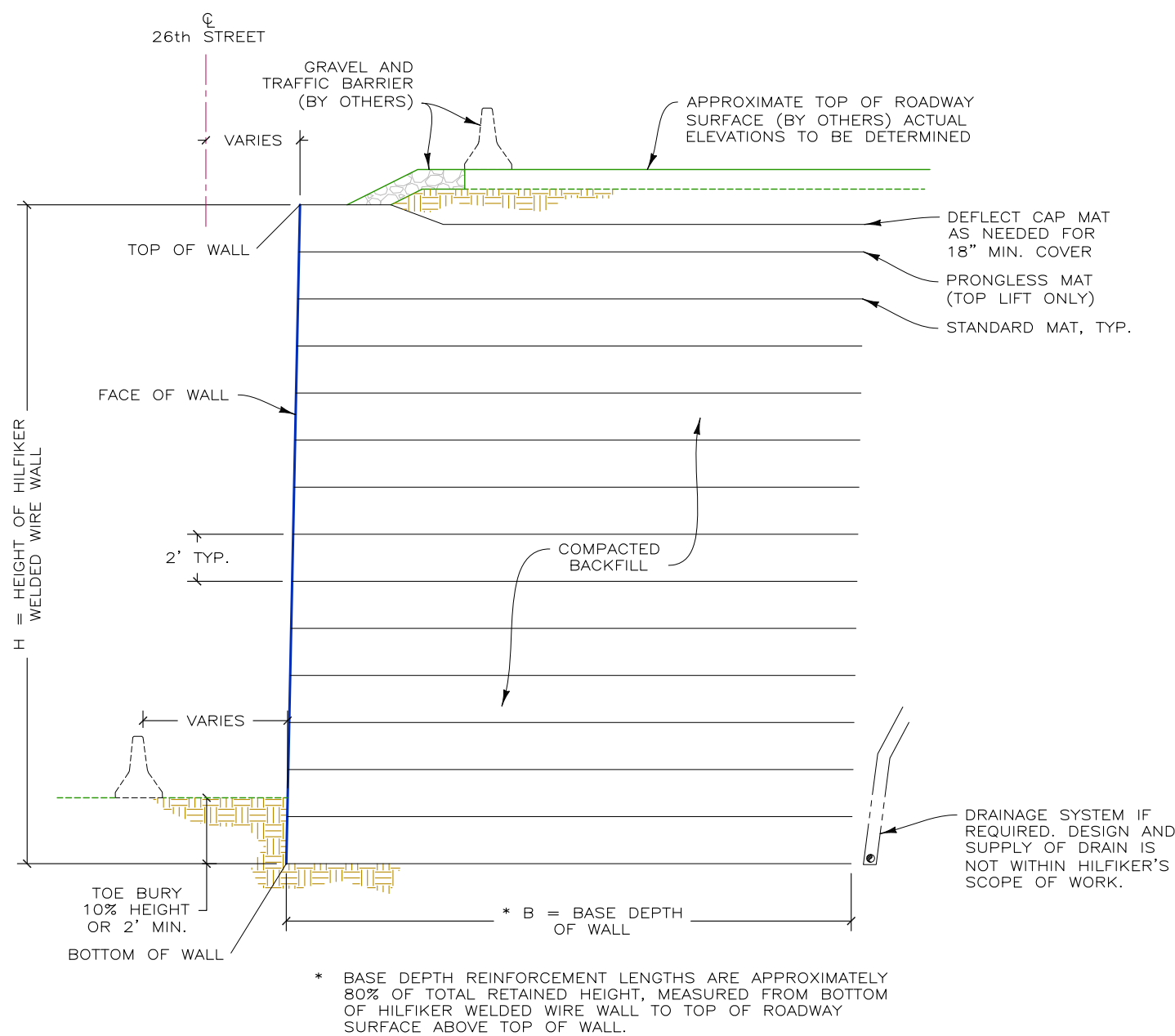
1902 Hilfiker Lane
Eureka, CA 95503-5711
TOLL-FREE 800.762.8962
PH 707.443.5093 FAX 707.443.2891
WEBSITE www.hilfiker.com E-MAIL info@hilfiker.com

DWG DATE
21 JAN 19
REVISION DATE
SCALE
NOTED

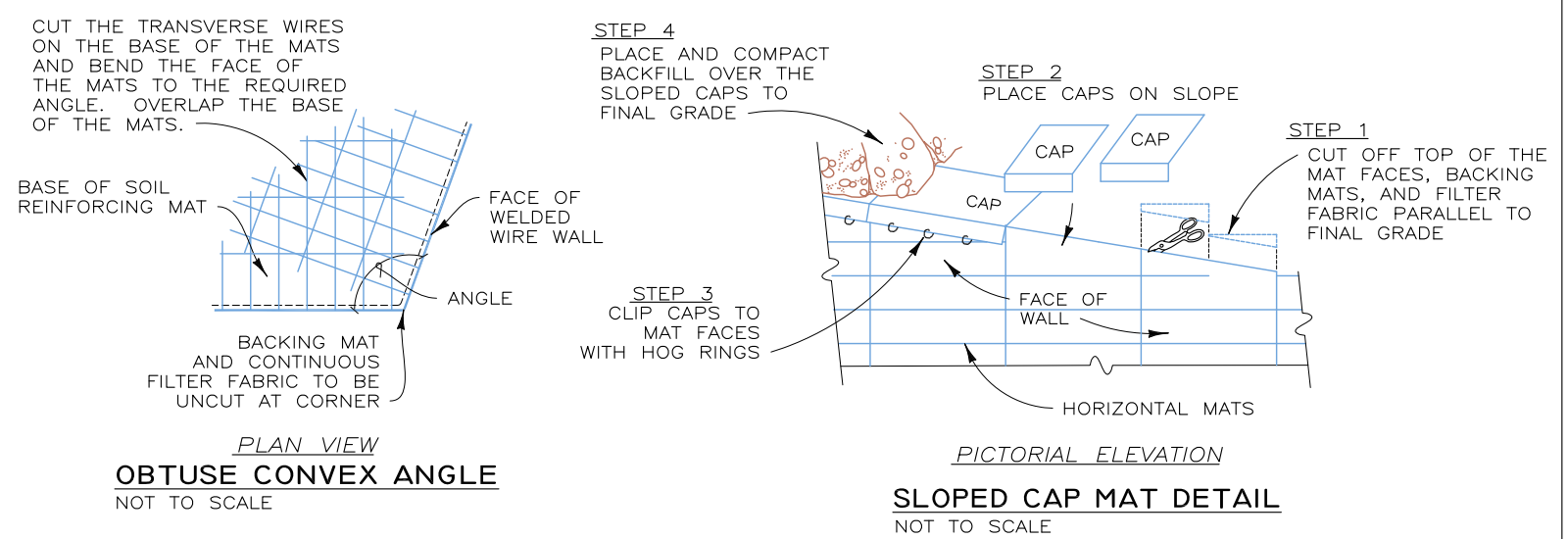
FOR BIDDING PURPOSES ONLY
WELDED WIRE WALL
26TH STREET & SOUTHEASTERN AVE.
SOUTH DAKOTA DEPARTMENT OF TRANSPORTATION
SIOUX FALLS, SOUTH DAKOTA
PLAN VIEW AND DEVELOPED ELEVATION

PROJECT NO.
190104BW
SHEET
3
OF 5

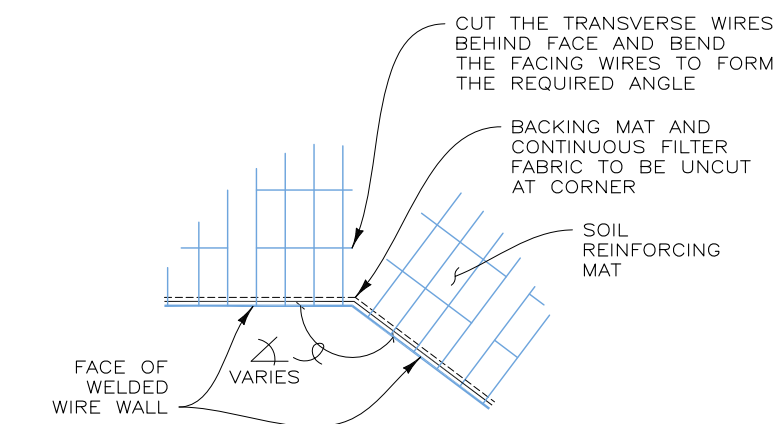
190104BW - 26TH STREET & SOUTHEASTERN AVE.



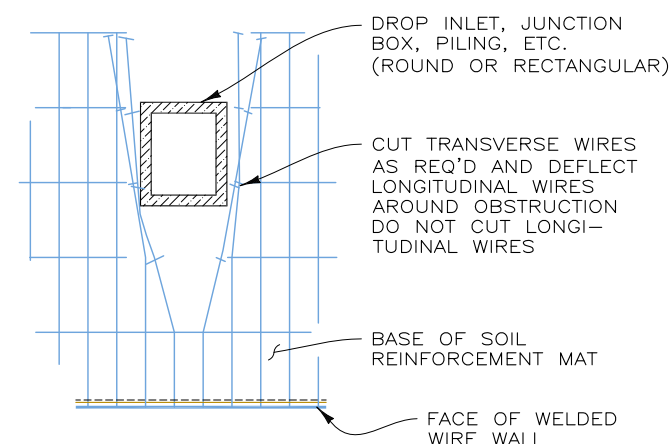
TYPICAL WELDED WIRE WALL SECTION
SCALE: 3" = 20'



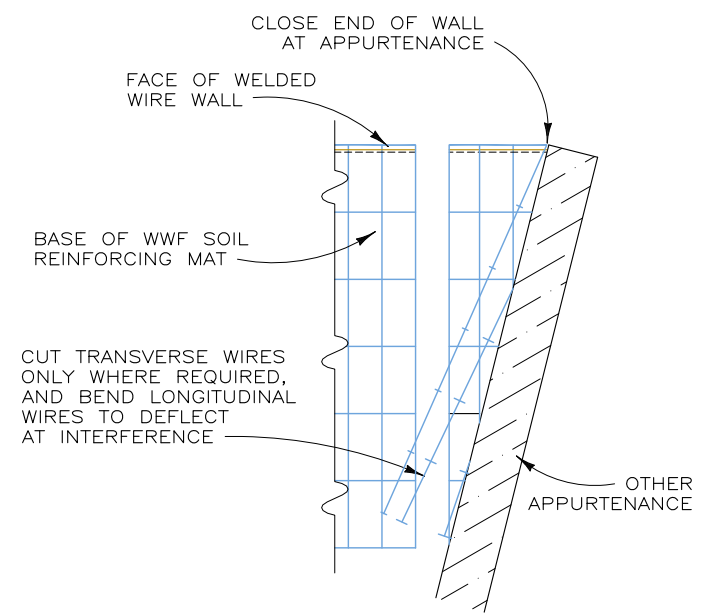
SLOPED CAP MAT DETAIL
NOT TO SCALE



CONCAVE ANGLE DETAIL
NOT TO SCALE



MAT PENETRATION DETAIL
NOT TO SCALE

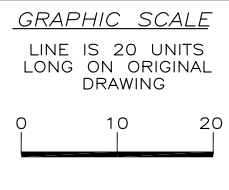


DEFLECTED LONGITUDINAL WIRES
NOT TO SCALE

BID DUE: 23 JAN 19

THIS DRAWING IS FURNISHED SOLELY FOR THE USE OF OR IN CONNECTION WITH THIS PROJECT AND THE PROPRIETARY INFORMATION SHOWN HEREON IS NOT TO BE TRANSMITTED TO ANY OTHER ORGANIZATION WITHOUT SPECIFIC AUTHORIZATION BY THE HILFIKER COMPANY. HILFIKER RETAINING WALLS ARE PROTECTED BY ONE OR MORE OF THE FOLLOWING PATENTS: 243,613; 243,697; 288,616; 4,117,686; 4,329,089; 4,324,508; 4,391,557; 4,505,621; 4,343,318; 4,661,023; 4,856,939; 4,929,125; 5,076,735; 5,647,695; 5,722,799; 5,733,072; 6,357,970B1; 6,874,975B2; 7,033,118B2; AND OTHERS. OTHER PATENTS PENDING (2008)

REV. NO.	DATE	BY	DESCRIPTION



PROJ. MGR.
LB
ENGINEER
CADD BY
DH

HILFIKER RETAINING WALLS

1902 Hilfiker Lane
Eureka, CA 95503-5711
TOLL-FREE 800.762.8962
PH 707.443.5093 FAX 707.443.2891
WEBSITE www.hilfiker.com E-MAIL info@hilfiker.com

1902
QUALITY PRODUCTS

DWG DATE
21 JAN 19
REVISION DATE
SCALE
NOTED

FOR BIDDING PURPOSES ONLY

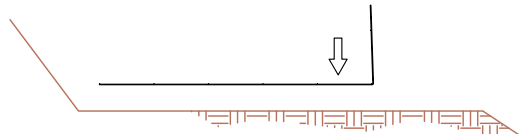
WELDED WIRE WALL

26TH STREET & SOUTHEASTERN AVE.
SOUTH DAKOTA DEPARTMENT OF TRANSPORTATION
SIOUX FALLS, SOUTH DAKOTA

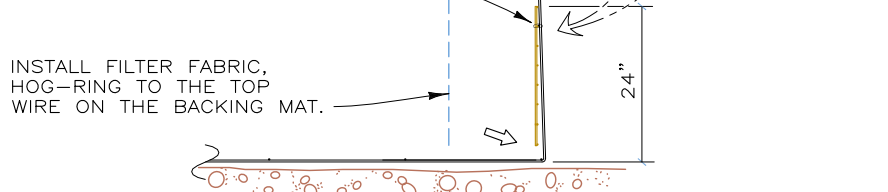
TYPICAL SECTION AND DETAILS

PROJECT NO.
190104BW
SHEET
4
OF 5

STEP 1
PLACE THE FIRST COURSE OF SOIL REINFORCEMENT MATS ON PREPARED FOUNDATION

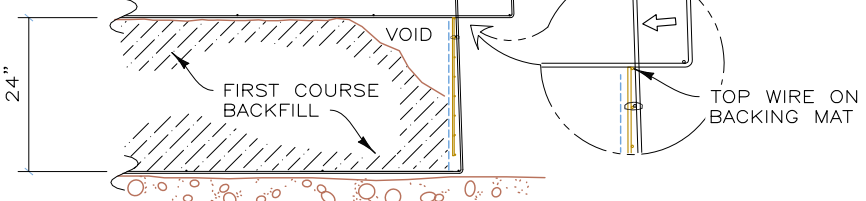


STEP 2
PLACE THE BACKING MAT AGAINST THE INSIDE FACE OF THE SOIL REINFORCEMENT MAT. CLIP THE SECOND-TO-TOP TRANSVERSE WIRE ON THE BACKING MAT TO THE TOP TRANSVERSE WIRE ON THE SOIL REINFORCEMENT MAT.

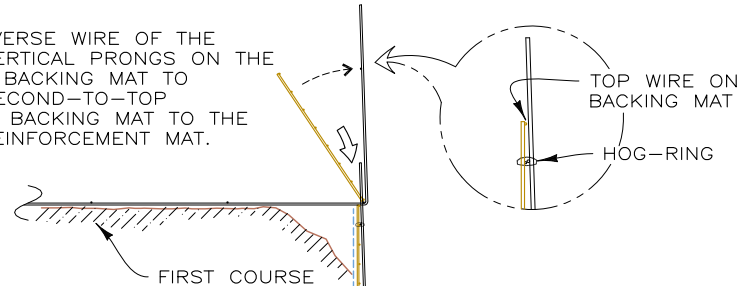


STEP 3
PLACE AND COMPACT THE BACKFILL IN LAYERS AND DENSITIES AS SPECIFIED IN THE PROJECT PLANS. LEAVE A VOID AT THE FACE AS SHOWN.

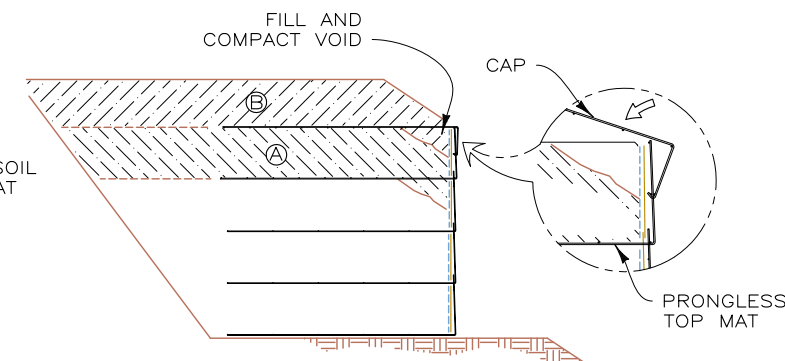
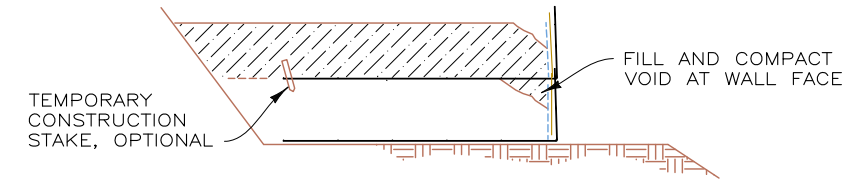
PLACE THE SECOND COURSE OF SOIL REINFORCEMENT MATS WITH THE BASE LONGITUDINAL WIRES RESTING ON THE TOP TRANSVERSE WIRE OF THE BACKING MAT BELOW. SLIDE THE SOIL REINFORCEMENT MAT INTO ALIGNMENT.



STEP 4
HOOK THE BOTTOM TRANSVERSE WIRE OF THE BACKING MAT OVER THE VERTICAL PRONGS ON THE LOWER MAT. ROTATE THE BACKING MAT TO VERTICAL AND CLIP THE SECOND-TO-TOP TRANSVERSE WIRE ON THE BACKING MAT TO THE TOP WIRE ON THE SOIL REINFORCEMENT MAT.

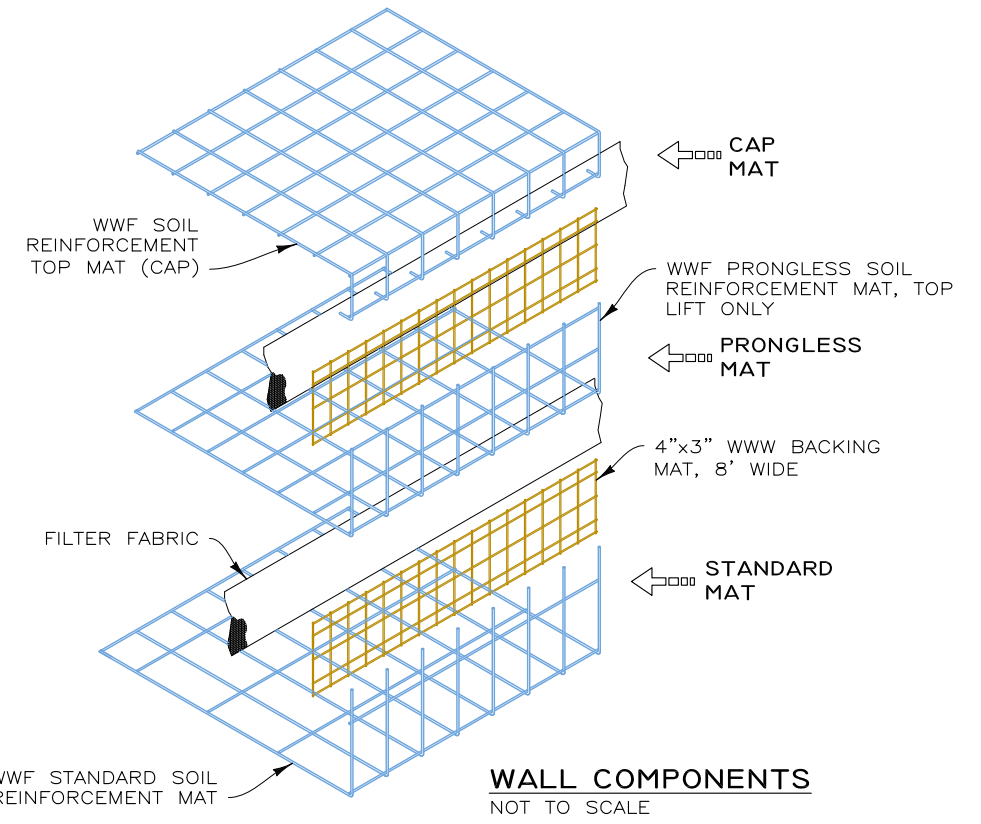


STEP 5
INSTALL THE FILTER FABRIC. PLACE AND COMPACT THE BACKFILL TO THE BASE ELEVATION OF THE NEXT MAT. REPEAT STEPS 3 THROUGH 5 TO THE TOP LIFT.



STEP 6: TOP LIFT
PLACE THE TOP LIFT PRONGLESS MAT, BACKING MAT AND FILTER FABRIC. PLACE AND COMPACT BACKFILL IN AREA "A". HOOK THE CAP OVER THE MIDDLE TRANSVERSE WIRE ON THE PRONGLESS MAT, AND ROTATE INTO PLACE. BACKFILL "B" TO 1'-6" MIN. COVER OVER THE CAP.

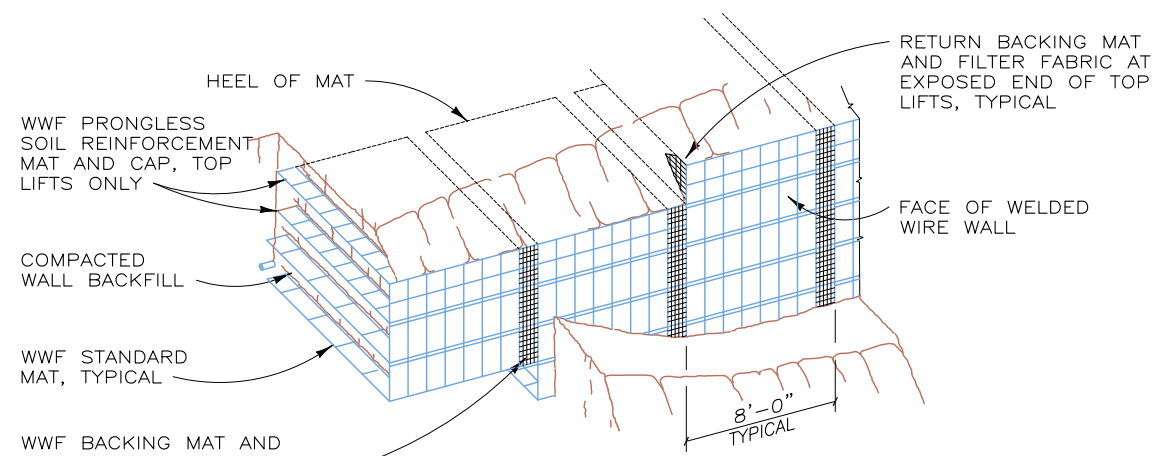
CONSTRUCTION SEQUENCE
NOT TO SCALE



WALL COMPONENTS
NOT TO SCALE

PROJECT-SPECIFIC NOTES:

1. REFERENCE DRAWINGS: BASED ON PROJECT PLANS FROM STATE OF SOUTH DAKOTA DEPARTMENT OF TRANSPORTATION SIGNED SEPTEMBER 7, 2018, SHEETS B51-B56 OF B127 AND E104-E116 OF E136.
2. BLACK AND WHITE REPRODUCTION OF THIS COLOR ORIGINAL MAY REDUCE ITS EFFECTIVENESS AND LEAD TO INCORRECT INTERPRETATION.
3. IT IS ASSUMED THAT ALL MATERIALS, BACKFILL AND CONSTRUCTION METHODS FOR HILFIKER M.S.E. WALLS WILL CONFORM TO HILFIKER'S SPECIFICATIONS AND/OR THOSE OF THE HILFIKER ENGINEERING CONSULTANT.
4. THIS IS NOT AN ENGINEERED SUBMITTAL. ALL INFORMATION HEREON IS DERIVED FROM THE REFERENCE DRAWINGS, AND IS SUBJECT TO GEOMETRIC AND GEOTECHNICAL CONFIRMATION. THE APPLICABLE HILFIKER CONSTRUCTION GUIDE AND SPECIFICATIONS ARE AN INTEGRAL PART OF THIS SUBMITTAL.
5. UPON ENGINEERED DESIGN, HILFIKER RETAINING WALLS SHALL BE RESPONSIBLE ONLY FOR THE INTERNAL STABILITY OF THE RETAINING WALL, AND NOT FOR GLOBAL STABILITY OR FOUNDATION BEARING CAPACITY. THE OWNER/CONTRACTOR SHALL BE RESPONSIBLE FOR ALL JOB SITE DRAINAGE, SAFETY AND FALL PROTECTION PROVISIONS FOR WORKERS IN COMPLIANCE WITH OSHA AND ANY OTHER APPLICABLE REQUIREMENTS.
6. WALL DESIGN SHALL REQUIRE A NON-SATURATED BACKFILL. SURFACE AND SUBSURFACE DRAINAGE CONTROL MAY BE REQUIRED TO PREVENT SATURATION OF THE BACKFILL OR TO RELIEVE HYDROSTATIC PRESSURES. DRAINAGE CONTROL SHALL BE AS SPECIFIED IN THE OWNER'S PROJECT PLANS AND SPECIFICATIONS, OR AS DIRECTED BY THE OWNER'S ENGINEER.
7. FOR BID DRAWINGS, IT IS ASSUMED THAT BASE DEPTHS AND WALL HEIGHTS ARE SUBJECT TO CHANGE BY THE FINAL PROJECT DESIGN.

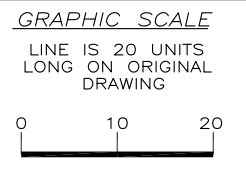


PICTORIAL ELEVATION
NOT TO SCALE

1901 04BW - 26TH STREET & SOUTHEASTERN AVE.

THIS DRAWING IS FURNISHED SOLELY FOR THE USE OF OR IN CONNECTION WITH THIS PROJECT AND THE PROPRIETARY INFORMATION SHOWN HEREON IS NOT TO BE TRANSMITTED TO ANY OTHER ORGANIZATION WITHOUT SPECIFIC AUTHORIZATION BY THE HILFIKER COMPANY. HILFIKER RETAINING WALLS ARE PROTECTED BY ONE OR MORE OF THE FOLLOWING PATENTS: 243,613; 243,697; 288,616; 4,117,686; 4,329,089; 4,324,508; 4,391,557; 4,505,621; 4,343,318; 4,661,023; 4,856,939; 4,929,125; 5,076,735; 5,647,695; 5,722,799; 5,733,072; 6,357,970B1; 6,874,975B2; 7,033,118B2; AND OTHERS. OTHER PATENTS PENDING (2008)

REV. NO.	DATE	BY	DESCRIPTION



PROJ. MGR.
LB
ENGINEER
CADD BY
DH

HILFIKER RETAINING WALLS

1902 Hilfiker Lane
Eureka, CA 95503-5711
TOLL-FREE 800.762.8962
PH 707.443.5093 FAX 707.443.2891
WEBSITE www.hilfiker.com E-MAIL info@hilfiker.com

DWG DATE
21 JAN 19
REVISION DATE
SCALE
NOTED

FOR BIDDING PURPOSES ONLY
WELDED WIRE WALL
26TH STREET & SOUTHEASTERN AVE.
SOUTH DAKOTA DEPARTMENT OF TRANSPORTATION
SIOUX FALLS, SOUTH DAKOTA
CONSTRUCTION SEQUENCE AND NOTES

PROJECT NO.
190104BW
SHEET
5
OF 5

BID DUE: 23 JAN 19