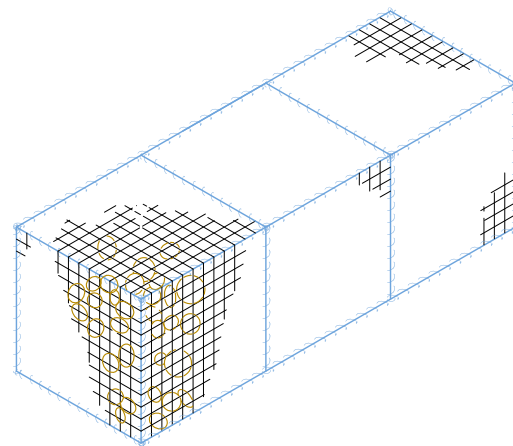
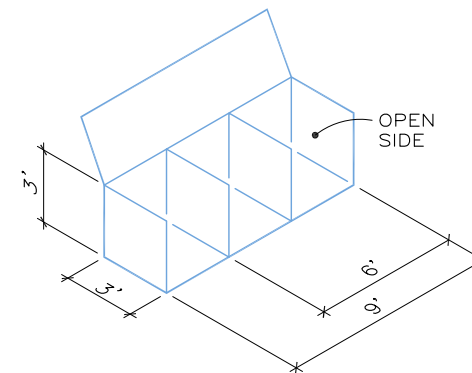


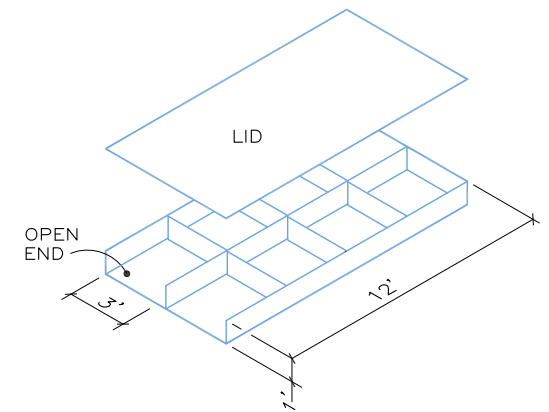
TYPICAL GABION
NOT TO SCALE



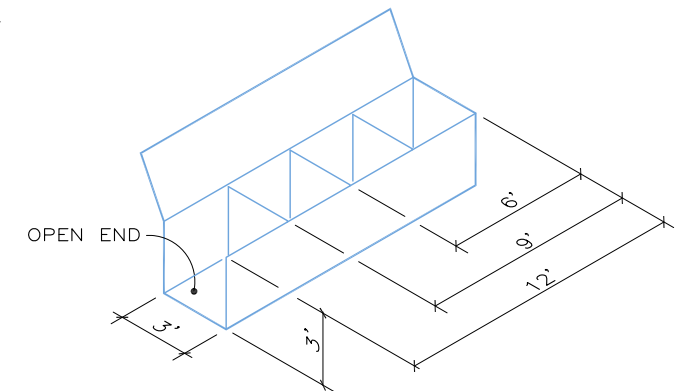
TYPICAL ASSEMBLED GABION
NOT TO SCALE



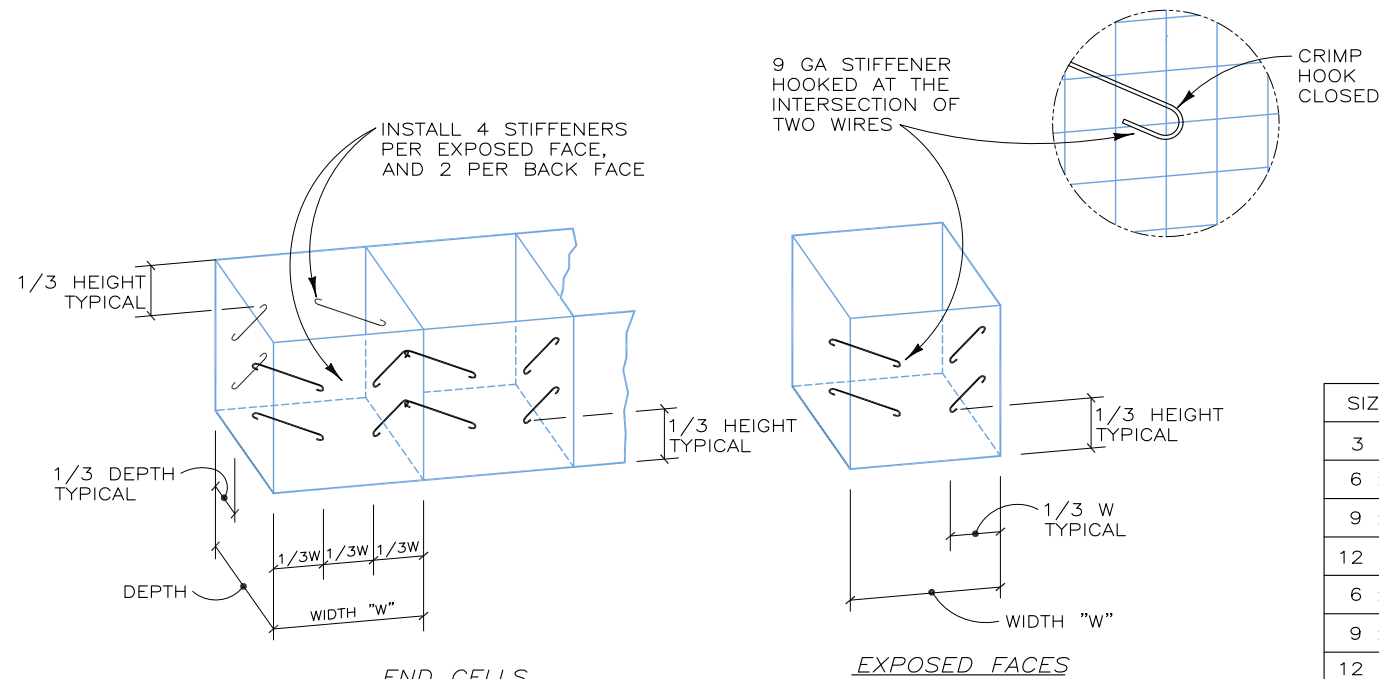
NOTE: SIZES CAN VARY
TYPICAL OPEN SIDE
NOT TO SCALE



NOTE: SIZES CAN VARY
TYPICAL MATTRESS
NOT TO SCALE



NOTE: SIZES CAN VARY
TYPICAL OPEN END
NOT TO SCALE



INSTALL 4 STIFFENERS PER EXPOSED FACE, AND 2 PER BACK FACE

9 GA STIFFENER HOOKED AT THE INTERSECTION OF TWO WIRES

CRIMP HOOK CLOSED

END CELLS

EXPOSED FACES

STIFFENER DETAILS
NOT TO SCALE

STANDARD GABION SIZES

SIZE LxWxH	CU.YD.	SIZE LxWxH	CU.YD.	SIZE LxWxH	CU.YD.
3 x 3 x 3	1	3 x 3 x 1.5	0.5	3 x 3 x 1	0.33
6 x 3 x 3	2	6 x 3 x 1.5	1	6 x 3 x 1	0.67
9 x 3 x 3	3	9 x 3 x 1.5	1.5	9 x 3 x 1	1
12 x 3 x 3	4	12 x 3 x 1.5	2	12 x 3 x 1	1.33
6 x 6 x 3	4	6 x 6 x 1.5	2	6 x 6 x 1	1.33
9 x 6 x 3	6	9 x 6 x 1.5	3	9 x 6 x 1	2
12 x 6 x 3	8	12 x 6 x 1.5	4	12 x 6 x 1	2.67
24 x 6 x 3	16	24 x 6 x 1.5	8	24 x 6 x 1	5.33

NOTES

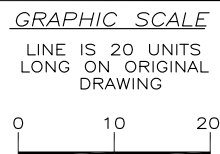
- GABION SIZES ARE EXPRESSED IN FEET.
- MATTRESSES AND CUSTOM SIZES PROVIDED ON REQUEST.
- GABIONS WHICH ARE TO BE CONNECTED TOGETHER SIDE-TO-SIDE OR END-TO-END, MAY BE PROVIDED OPEN-SIDED OR OPEN-ENDED AS SHOWN TO REDUCE WEIGHT, COST, AND ASSEMBLY TIME.
- GABIONS ARE MANUFACTURED OF 3"x3" WELDED WIRE MESH, 9 GA. WITH 0.9 OZ/SF ZINC COATING, OR 11 GA. WITH 0.85 OZ/SF ZINC COATING. OPTIONAL 2.0 OZ/SF ZINC COATING IS AVAILABLE ON REQUEST.

COLOR COMPILED GABION DETAILS

WHERE HEIGHT OF GABION IS 2' OR LESS, INSTALL 2 STIFFENERS PER FACE
WHERE HEIGHT IS 12", NO STIFFENERS REQUIRED

THIS DRAWING IS FURNISHED SOLELY FOR THE USE OF OR IN CONNECTION WITH THIS PROJECT AND THE PROPRIETARY INFORMATION SHOWN HEREON IS NOT TO BE TRANSMITTED TO ANY OTHER ORGANIZATION WITHOUT SPECIFIC AUTHORIZATION BY THE HILFIKER COMPANY. HILFIKER RETAINING WALLS ARE PROTECTED BY ONE OR MORE OF THE FOLLOWING PATENTS: 243,613; 243,697; 288,616; 4,117,686; 4,329,089; 4,324,508; 4,391,557; 4,505,621; 4,343,318; 4,661,023; 4,856,939; 4,929,125; 5,076,735; 5,647,695; 5,722,799; 5,733,072; 6,357,970B1; 6,874,975B2; 7,033,118B2; AND OTHERS. OTHER PATENTS PENDING (2008)

REV.NO.	DATE	BY	DESCRIPTION
1	6/16/98	DR	REVISED ZINC COATING THICKNESS
2	4/12/02	DR	UPDATED BORDER
3	12 SEP 07	AMJ	UPDATED BORDER, MINOR CHANGES
4	29 OCT 13	AMJ	ADDED COLOR TO DETAILS



PROJ.MGR.
ENGINEER
CADD BY
HRW

HILFIKER RETAINING WALLS

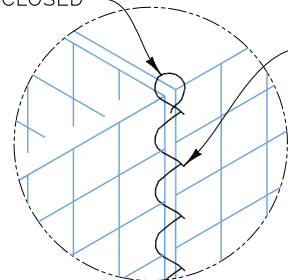
1902 Hilfiker Lane
Eureka, CA 95503-5711
TOLL-FREE 800.762.8962
PH 707.443.5093 FAX 707.443.2891
WEBSITE www.hilfiker.com E-MAIL info@hilfiker.com

DWG DATE
17 JUL 95
REVISION DATE
29 OCT 13
SCALE
NOTED

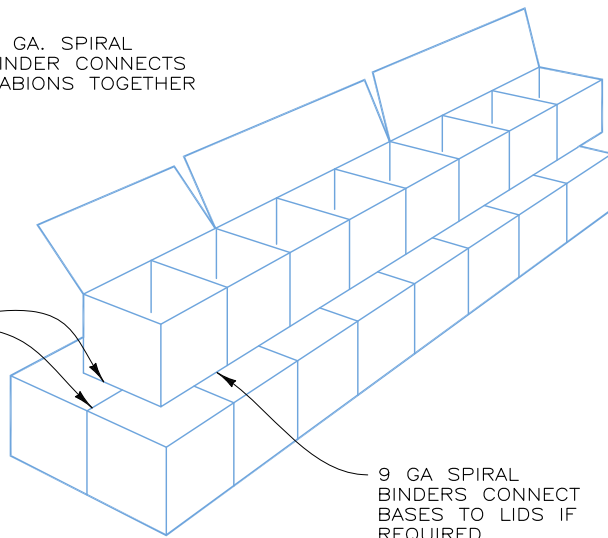
STANDARD DRAWING
ARTWELD GABIONS
DETAILS AND NOTES

PROJECT NO.
SHEET
1
OF 4

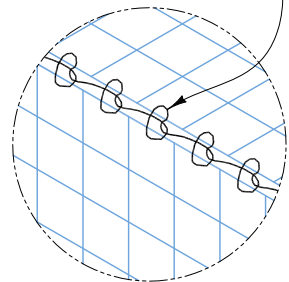
CRIMP ENDS OF SPIRAL CLOSED



9 GA. SPIRAL BINDER CONNECTS GABIONS TOGETHER



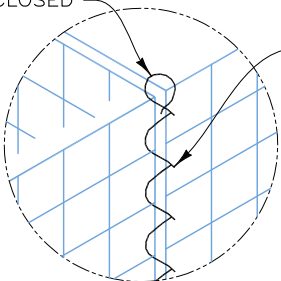
OPTIONAL 13 GA. TIE WIRE, ONE HITCH AT 3" SPACING



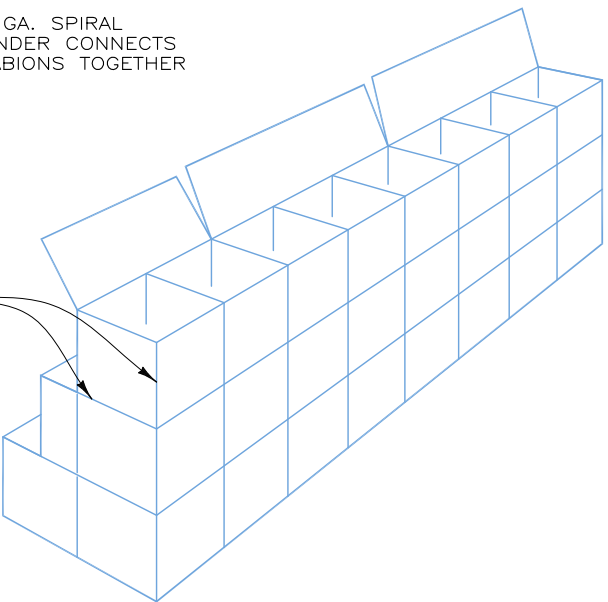
9 GA. SPIRAL BINDERS CONNECT BASES TO LIDS IF REQUIRED.

ASSEMBLY DETAILS - STEP FACE WALL
NOT TO SCALE

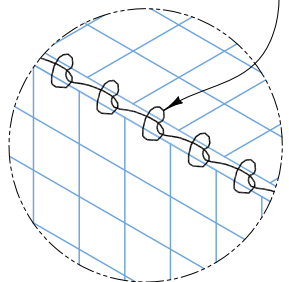
CRIMP ENDS OF SPIRAL CLOSED



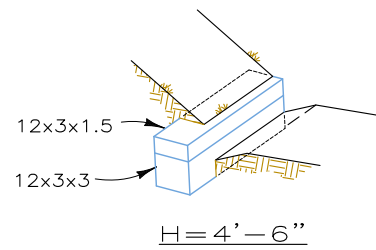
9 GA. SPIRAL BINDER CONNECTS GABIONS TOGETHER



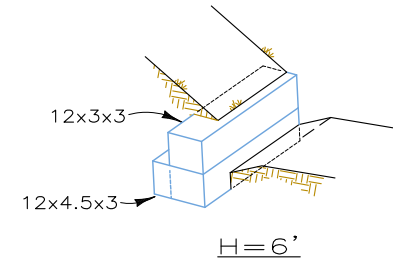
OPTIONAL 13 GA. TIE WIRE, ONE HITCH AT 3" SPACING



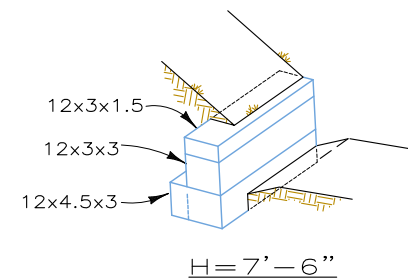
ASSEMBLY DETAILS - VERTICAL WALL
NOT TO SCALE



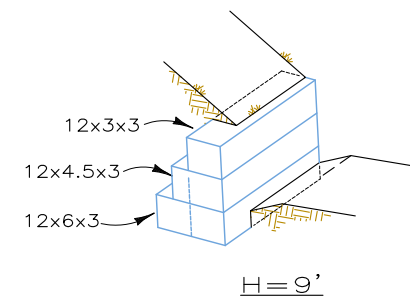
H=4'-6"



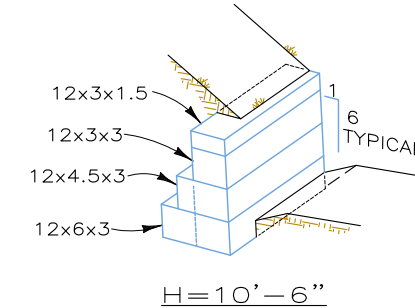
H=6'



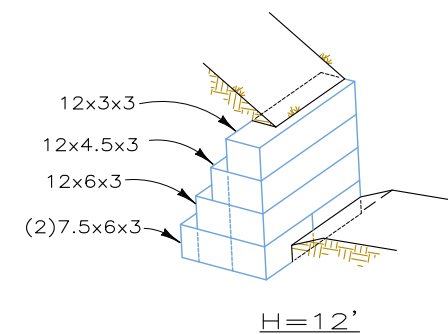
H=7'-6"



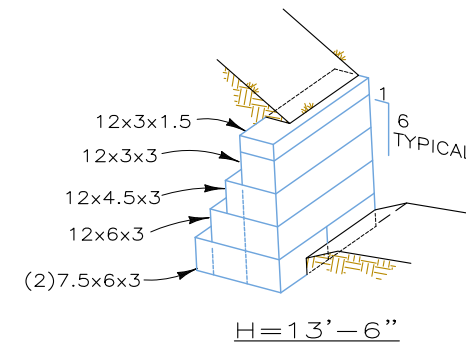
H=9'



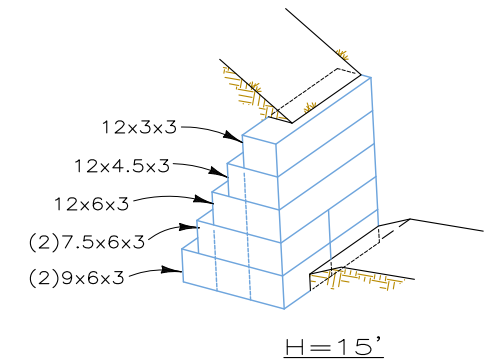
H=10'-6"



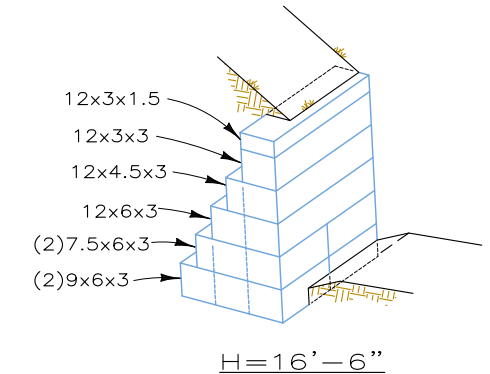
H=12'



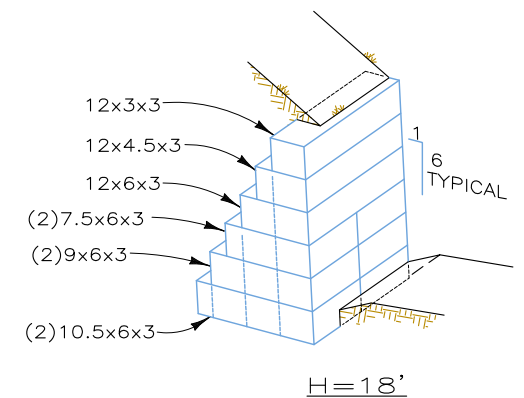
H=13'-6"



H=15'



H=16'-6"



H=18'

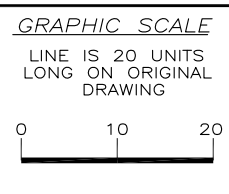
GABION CONFIGURATION NOTES

1. THESE DRAWINGS ARE CONCEPTUAL, AND FOR BIDDING PURPOSES ONLY.
2. LENGTH OF GABIONS MAY BE VARIED, AND GABIONS MAY BE STAGGERED IF DESIRED. STANDARD GABIONS ARE SHOWN IN THIS CONCEPTUAL DRAWING FOR SIMPLICITY.
3. ALL GABIONS TO BE 3"x3", 9 GA WWF.
4. FLAT 9 GA END PANELS WILL BE SUPPLIED TO CLOSE OFF OPEN ENDS OF LIFTS.

COLOR COMPILED GABION DETAILS

THIS DRAWING IS FURNISHED SOLELY FOR THE USE OF OR IN CONNECTION WITH THIS PROJECT AND THE PROPRIETARY INFORMATION SHOWN HEREON IS NOT TO BE TRANSMITTED TO ANY OTHER ORGANIZATION WITHOUT SPECIFIC AUTHORIZATION BY THE HILFIKER COMPANY. HILFIKER RETAINING WALLS ARE PROTECTED BY ONE OR MORE OF THE FOLLOWING PATENTS: 243,613; 243,697; 288,616; 4,117,686; 4,329,089; 4,324,508; 4,391,557; 4,505,621; 4,343,318; 4,661,023; 4,856,939; 4,929,125; 5,076,735; 5,647,695; 5,722,799; 5,733,072; 6,357,970B1; 6,874,975B2; 7,033,118B2; AND OTHERS. OTHER PATENTS PENDING (2008)

REV.NO.	DATE	BY	DESCRIPTION
1	6/16/98	DR	REVISED ZINC COATING THICKNESS
2	4/12/02	DR	UPDATED BORDER
3	12 SEP 07	AMJ	UPDATED BORDER, MINOR CHANGES
4	29 OCT 13	AMJ	ADDED COLOR TO DETAILS



PROJ.MGR.
ENGINEER
CADD BY
HRW

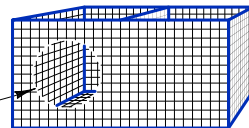
HILFIKER RETAINING WALLS

1902 Hilfiker Lane
Eureka, CA 95503-5711
TOLL-FREE 800.762.8962
PH 707.443.5093 FAX 707.443.2891
WEBSITE www.hilfiker.com E-MAIL info@hilfiker.com

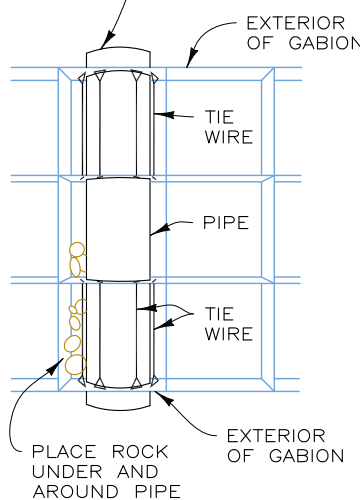
DWG DATE
17 JUL 95
REVISION DATE
29 OCT 13
SCALE
NOTED

STANDARD DRAWING	PROJECT NO.
ARTWELD GABIONS	SHEET 2
DETAILS AND NOTES	OF 4

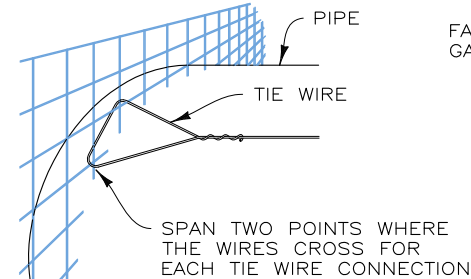
CUT A HOLE THRU THE WALLS OF THE GABION THE SAME SIZE AS THE OUTSIDE DIAMETER OF THE PIPE



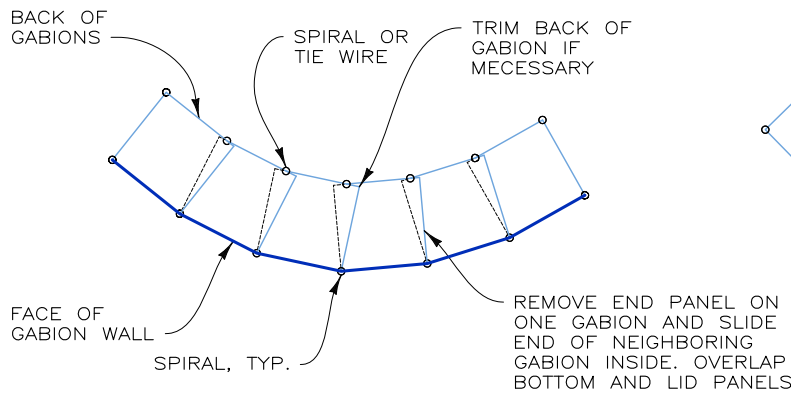
PUSH THE PIPE THRU THE HOLES AND INSTALL TIE WIRE ACROSS THE FACES OF THE EXTERIOR GABIONS AS SHOWN, APPROXIMATELY 9" APART



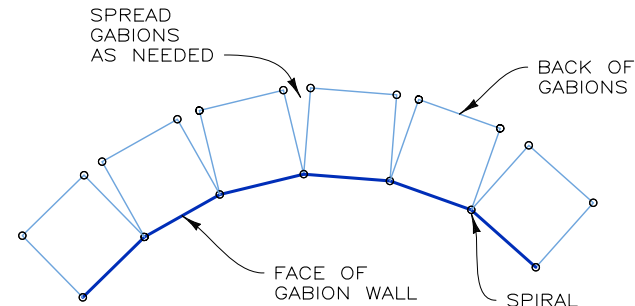
PIPE THRU GABION DETAIL
NOT TO SCALE



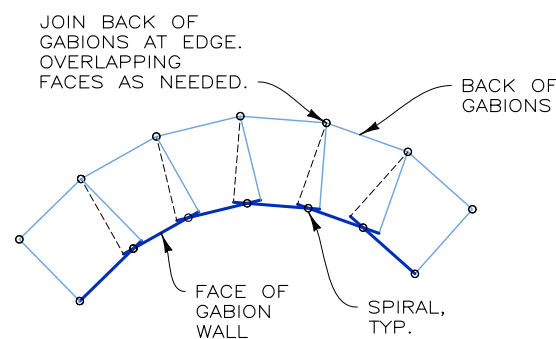
TIE WIRE DETAIL



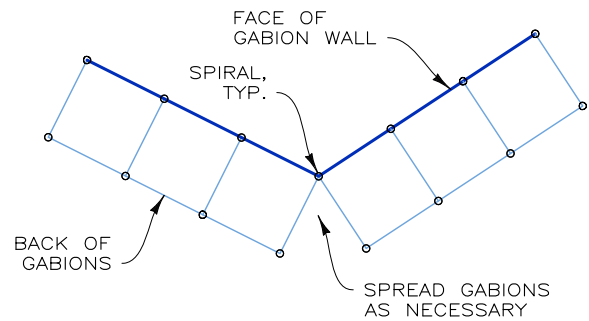
PLAN VIEW
CONVEX CURVE
NOT TO SCALE



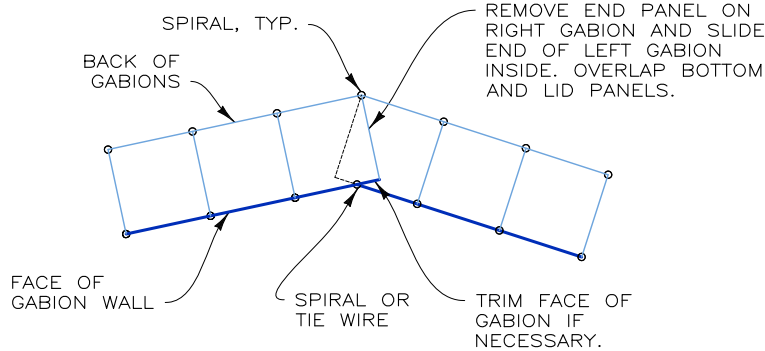
PLAN VIEW
CONCAVE CURVE
GAPPED BACK



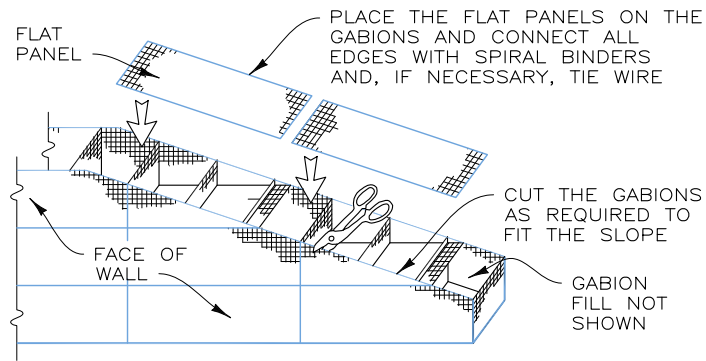
PLAN VIEW
CONCAVE CURVE
JOINED BACK



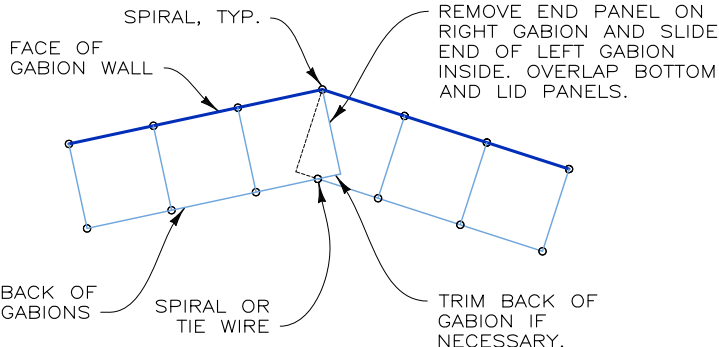
PLAN VIEW
CONCAVE ANGLE
GAPPED BACK



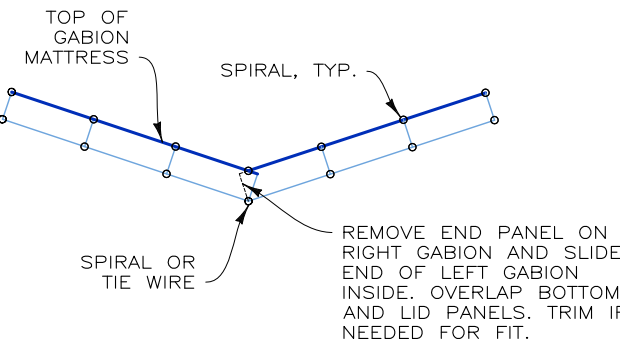
PLAN VIEW
CONCAVE ANGLE
NOT TO SCALE



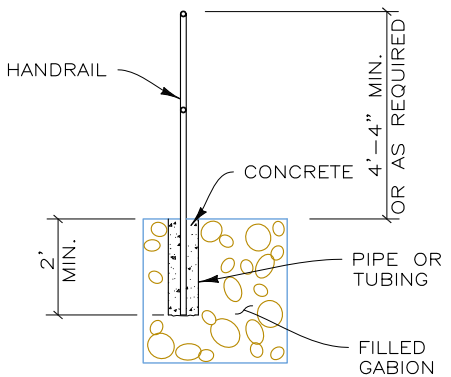
PICTORIAL ELEVATION
SLOPED GABION DETAIL
NOT TO SCALE



PLAN VIEW
CONVEX ANGLE
NOT TO SCALE



V-DITCH SECTION
NOT TO SCALE

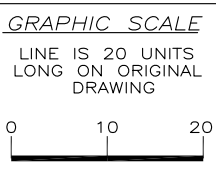


HANDRAIL ANCHORED IN GABION
NOT TO SCALE

COLOR COMPILED GABION DETAILS

THIS DRAWING IS FURNISHED SOLELY FOR THE USE OF OR IN CONNECTION WITH THIS PROJECT AND THE PROPRIETARY INFORMATION SHOWN HEREON IS NOT TO BE TRANSMITTED TO ANY OTHER ORGANIZATION WITHOUT SPECIFIC AUTHORIZATION BY THE HILFIKER COMPANY. HILFIKER RETAINING WALLS ARE PROTECTED BY ONE OR MORE OF THE FOLLOWING PATENTS: 243,613; 243,697; 288,616; 4,117,686; 4,329,089; 4,324,508; 4,391,557; 4,505,621; 4,343,318; 4,661,023; 4,856,939; 4,929,125; 5,076,735; 5,647,695; 5,722,799; 5,733,072; 6,357,970B1; 6,874,975B2; 7,033,118B2; AND OTHERS. OTHER PATENTS PENDING (2008)

REV. NO.	DATE	BY	DESCRIPTION
1	6/16/98	DR	REVISED ZINC COATING THICKNESS
2	4/12/02	DR	UPDATED BORDER
3	12 SEP 07	AMJ	UPDATED BORDER, MINOR CHANGES
4	29 OCT 13	AMJ	ADDED COLOR TO DETAILS



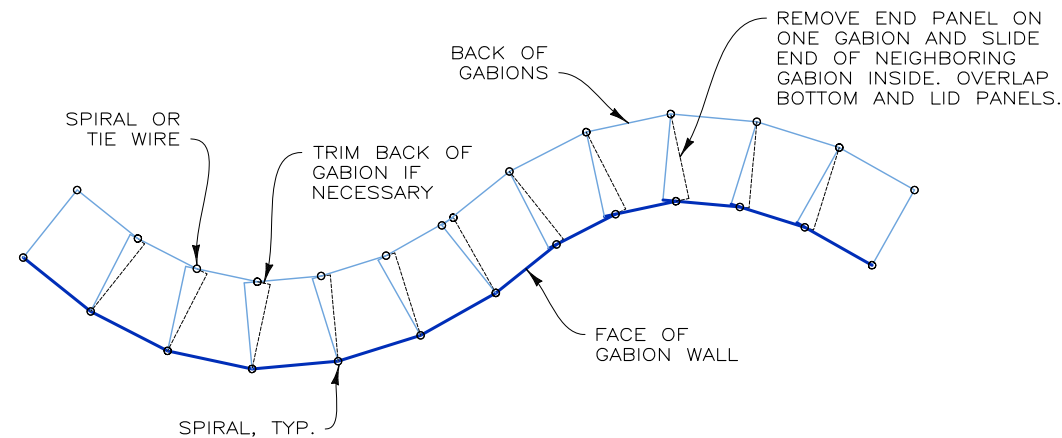
PROJ. MGR.
ENGINEER
CADD BY
HRW

HILFIKER RETAINING WALLS

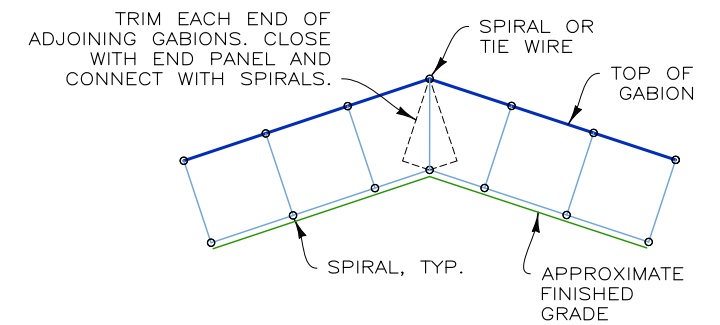
1902 Hilfiker Lane
Eureka, CA 95503-5711
TOLL-FREE 800.762.8962
PH 707.443.5093 FAX 707.443.2891
WEBSITE www.hilfiker.com E-MAIL info@hilfiker.com

DWG DATE
19 SEPT 08
REVISION DATE
29 OCT 13
SCALE
NOTED

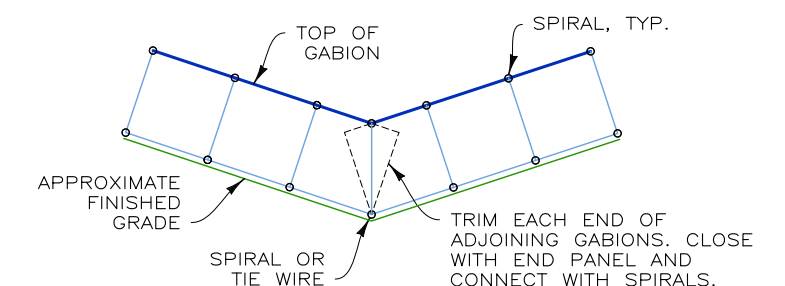
STANDARD DRAWING	PROJECT NO.
ARTWELD GABIONS	SHEET 3
MISCELLANEOUS DETAILS	OF 4



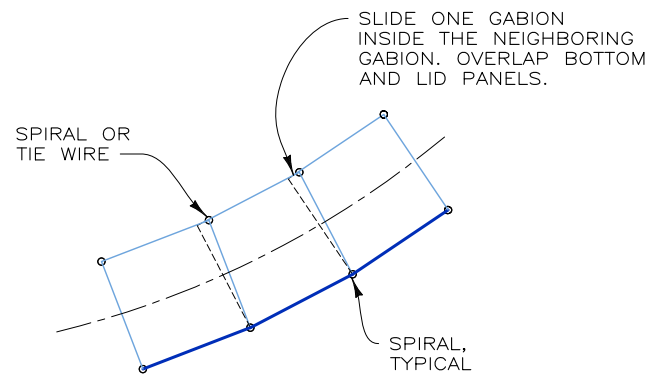
PLAN VIEW
CURVILINEAR DETAIL
 NOT TO SCALE



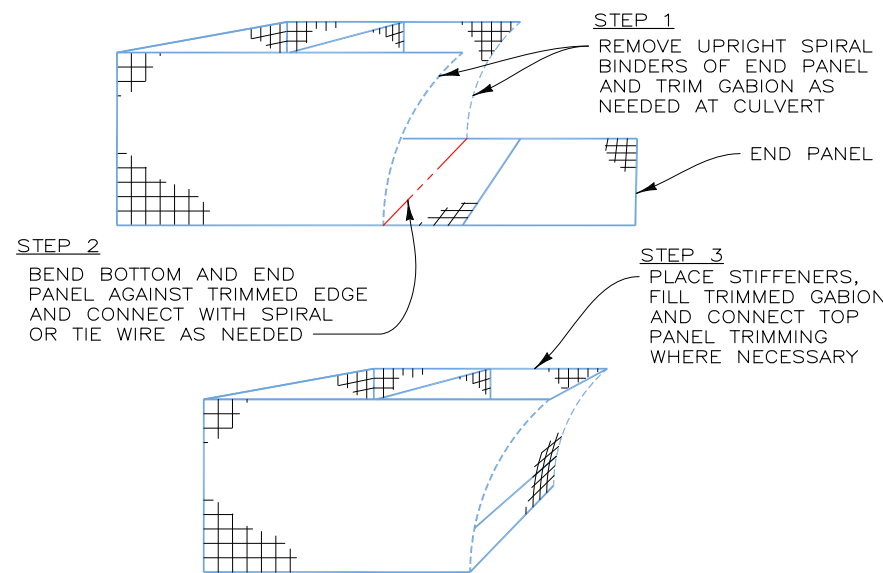
ELEVATION VIEW



ELEVATION VIEW
GABIONS ON GRADE
 NOT TO SCALE



PLAN VIEW
FITTING GABIONS TO CURVE
 SCALE: 1"=5'

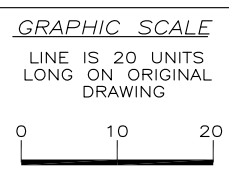


PICTORIAL ELEVATION
TRIMMED GABION DETAIL
 NOT TO SCALE

COLOR COMPILED GABION DETAILS

THIS DRAWING IS FURNISHED SOLELY FOR THE USE OF OR IN CONNECTION WITH THIS PROJECT AND THE PROPRIETARY INFORMATION SHOWN HEREON IS NOT TO BE TRANSMITTED TO ANY OTHER ORGANIZATION WITHOUT SPECIFIC AUTHORIZATION BY THE HILFIKER COMPANY. HILFIKER RETAINING WALLS ARE PROTECTED BY ONE OR MORE OF THE FOLLOWING PATENTS: 243,613; 243,697; 288,616; 4,117,686; 4,329,089; 4,324,508; 4,391,557; 4,505,821; 4,343,318; 4,661,023; 4,856,939; 4,929,125; 5,076,735; 5,647,695; 5,722,799; 5,733,072; 6,357,970B1; 6,874,975B2; 7,033,118B2; AND OTHERS. OTHER PATENTS PENDING (2008)

REV.NO.	DATE	BY	DESCRIPTION
1	6/16/98	DR	REVISED ZINC COATING THICKNESS
2	4/12/02	DR	UPDATED BORDER
3	12 SEP 07	AMJ	UPDATED BORDER, MINOR CHANGES
4	29 OCT 13	AMJ	ADDED COLOR TO DETAILS



PROJ.MGR.
 ENGINEER
 CADD BY
 HRW

HILFIKER RETAINING WALLS

1902 Hilfiker Lane
 Eureka, CA 95503-5711
 TOLL-FREE 800.762.8962
 PH 707.443.5093 FAX 707.443.2891
 WEB SITE www.hilfiker.com E-MAIL Info@hilfiker.com

DWG DATE
 19 SEPT 08
 REVISION DATE
 29 OCT 13
 SCALE
 NOTED

STANDARD DRAWING	PROJECT NO.
ARTWELD GABIONS	SHEET 4
MISCELLANEOUS DETAILS	OF 4