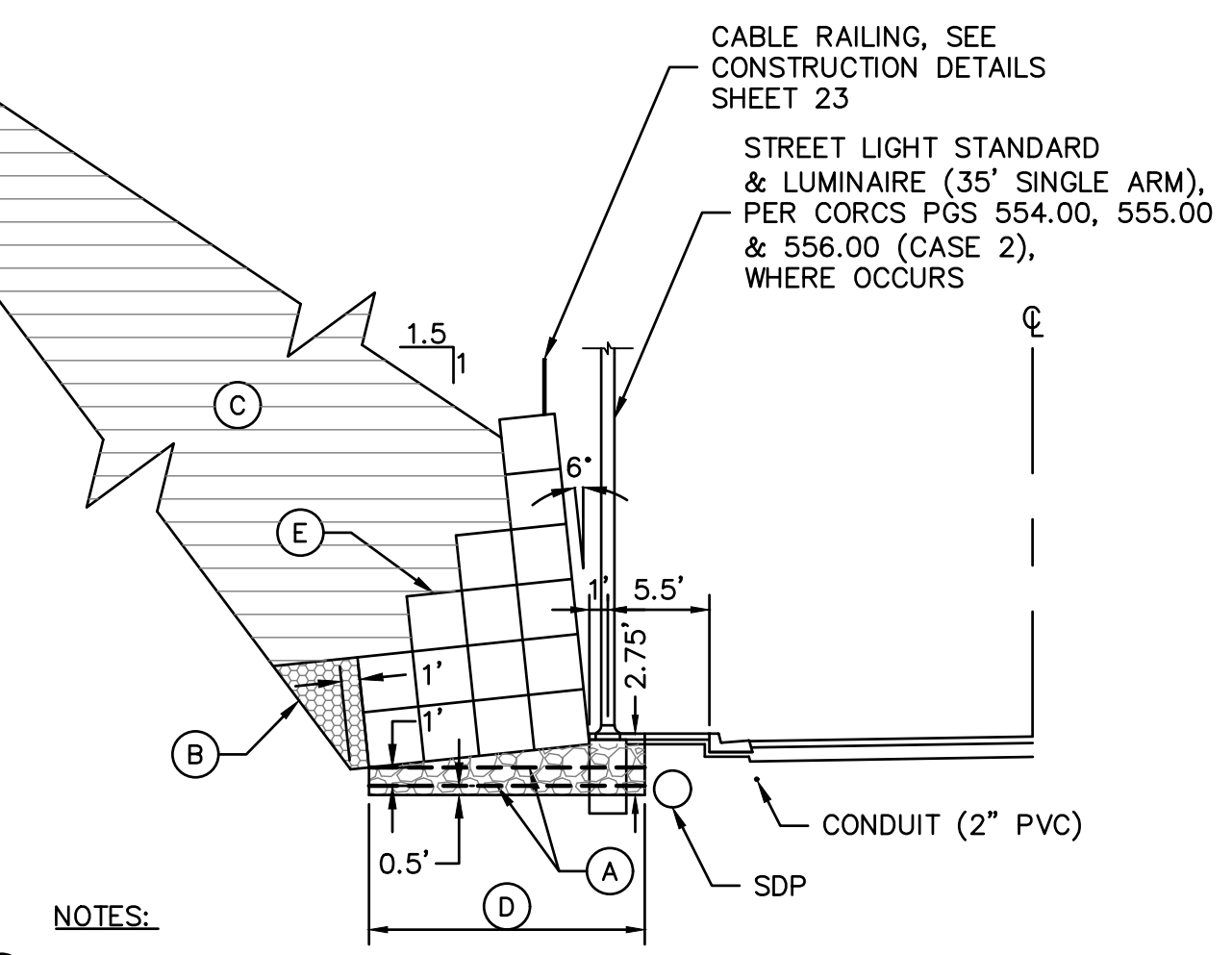
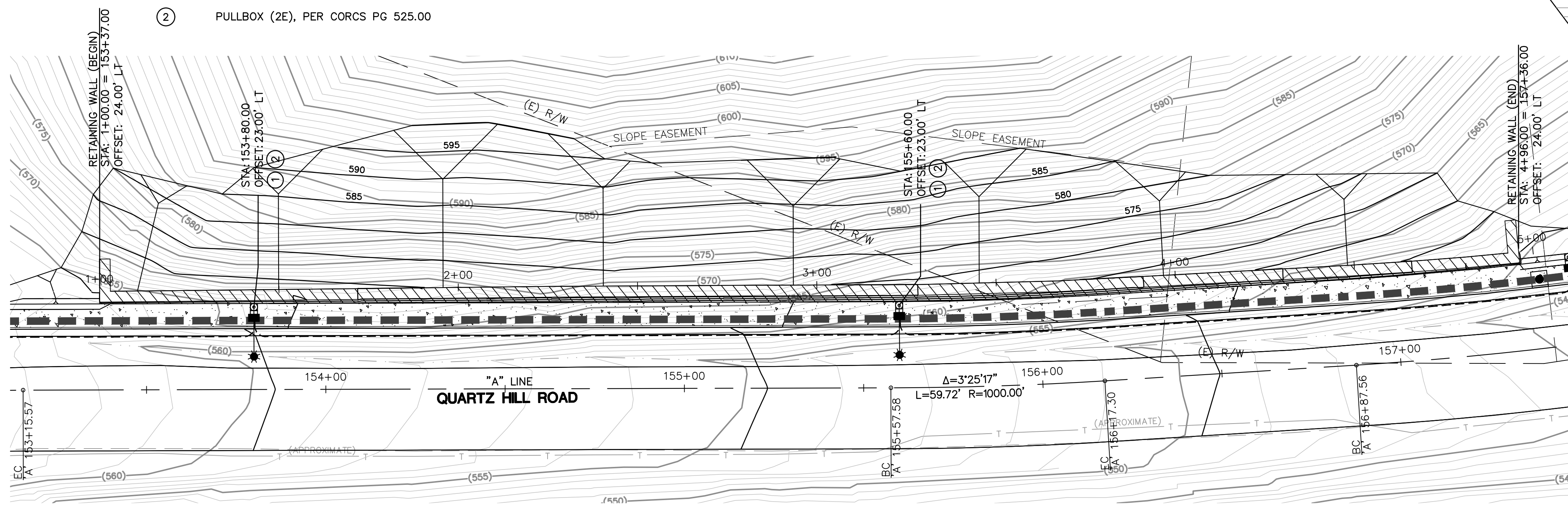


GABION SIZE TABLE			
LABEL	SIZE (FT.) LxHxW	CU. YD.	
1A	18 X 3 X 1.5	3	
1B	84 X 3 X 3	28	
1C	39 X 3 X 1.5	7	
2A	18 X 3 X 1.5	3	
2B	183 X 3 X 3	61	
2C	21 X 3 X 1.5	4	
3A	18 X 3 X 1.5	3	
3B	54 X 3 X 3	18	
3C	141 X 6 X 3	94	
3D	63 X 3 X 3	21	
3E	18 X 3 X 1.5	3	
4A	18 X 3 X 1.5	3	
4B	54 X 3 X 3	18	
4C	36 X 6 X 3	24	
4D	141 X 9 X 3	141	
4E	45 X 6 X 3	30	
4F	54 X 3 X 3	18	
4G	15 X 3 X 1.5	3	
5A	3 X 9 X 3	3	
5B	51 X 3 X 3	17	
5C	36 X 6 X 3	24	
5D	54 X 9 X 3	54	
5E	84 X 12 X 3	112	
5F	87 X 9 X 3	87	
5G	36 X 6 X 3	24	
5H	45 X 3 X 3	15	
5I	3 X 9 X 3	3	
6A	3 X 6 X 3	2	
6B	15 X 3 X 3	5	
6C	36 X 6 X 3	24	
6D	54 X 9 X 3	54	
6E	183 X 12 X 3	244	
6F	57 X 9 X 3	57	
6G	33 X 6 X 3	22	
6H	12 X 3 X 3	4	
6I	3 X 6 X 3	2	

LEGEND

- GABION RETAINING WALL
- STREET LIGHT STANDARD & LUMINAIRE (35' SINGLE ARM), PER CORCS PGS 554.00, 555.00 & 556.00 (CASE 2)
- PULLBOX (2E), PER CORCS PG 525.00

PROFILE
 VERT: 1" = 4'
 HORZ: 1" = 20'



- NOTES:**
- (A) GEOSYNTHETIC (UNIAXIAL GEOGRID) INSTALLED PER MANUFACTURER'S RECOMMENDATIONS EMBEDDED IN CLASS 2 AB, 90% COMPACTION.
 - (B) 3/4" DRAIN ROCK 12" MAX. LIFT, MIN. 2 PASSES W/RAMMER TAMPER EACH LIFT.
 - (C) REPLACE NATIVE MATERIAL, 90% COMPACTION.
 - (D) VARIES 9' MIN., 15' MAX. REINFORCED FOUNDATION WHERE H ≥ 9', STA 1+36 TO 4+66.
 - (E) SEE CONSTRUCTION DETAILS SHEET 23.

GABION RETAINING WALL DETAIL
 N.T.S.

DESIGNED BY: TUM
 DRAWN BY: TUM

CITY OF REDDING RECORD DRAWING

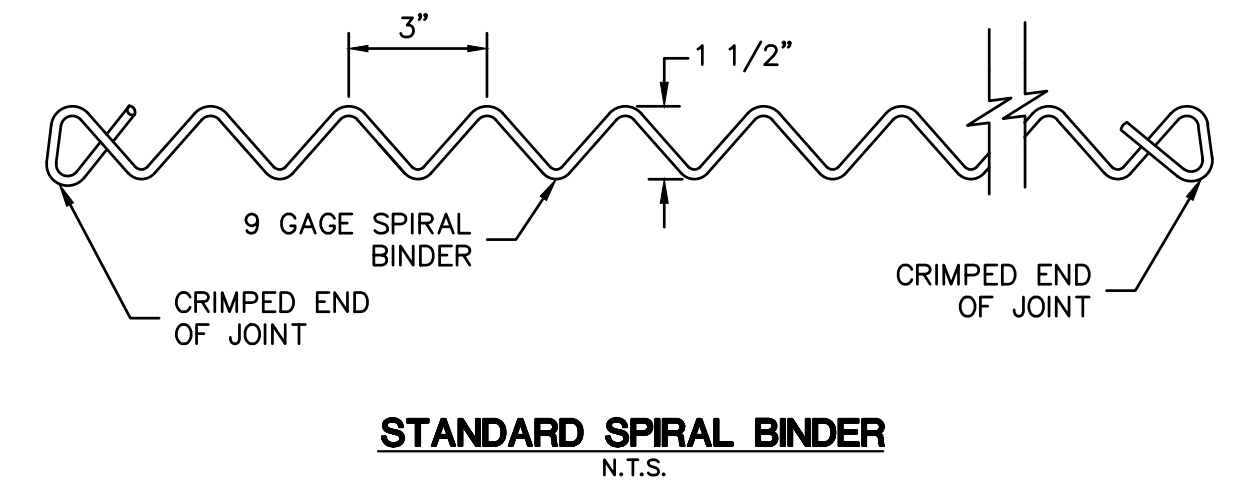
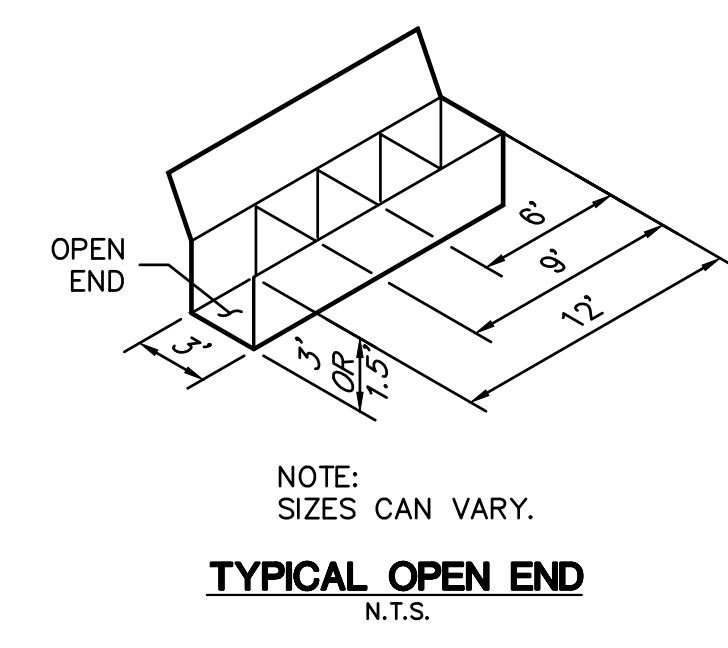
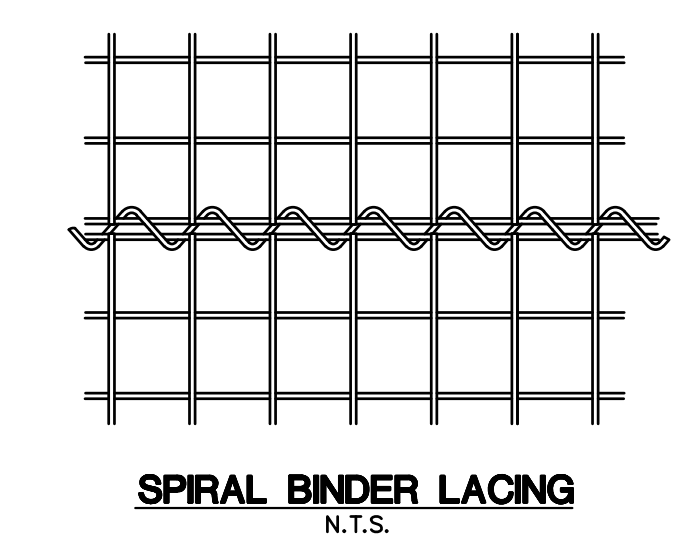
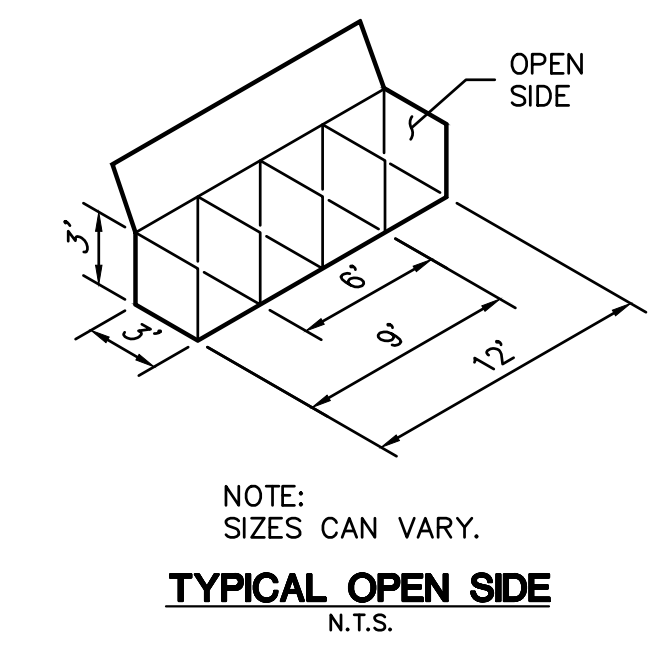
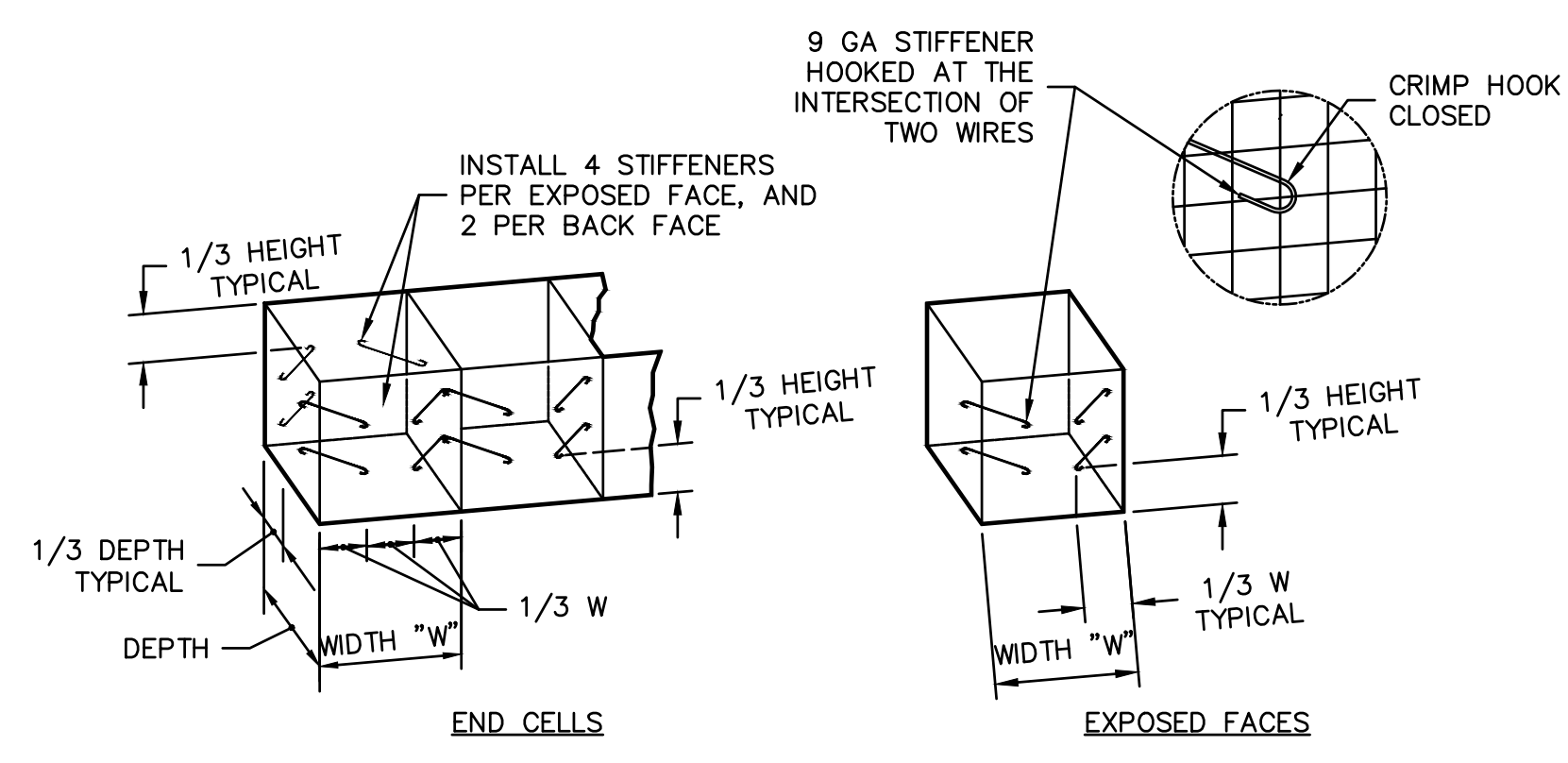
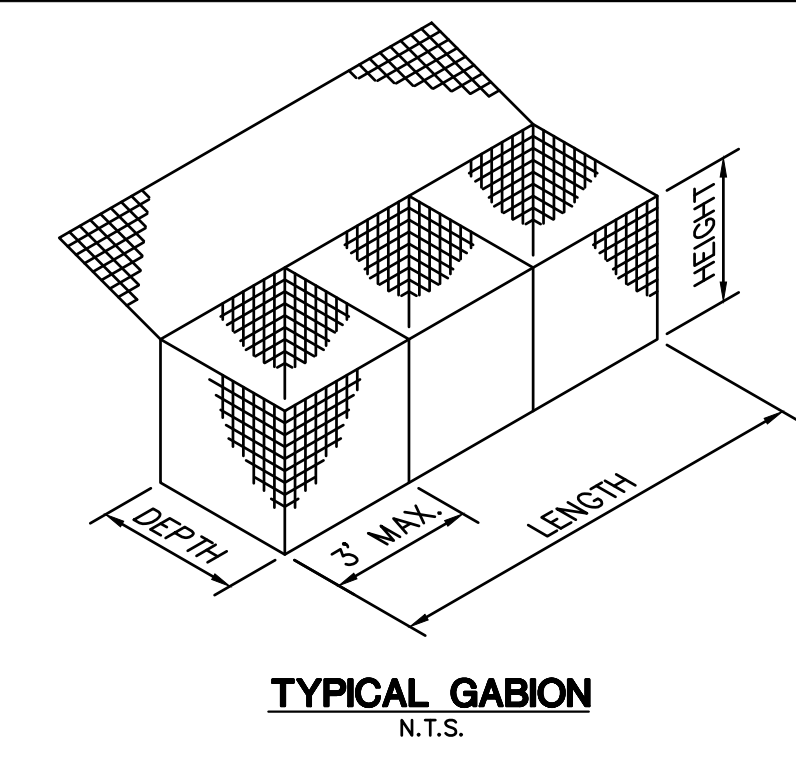
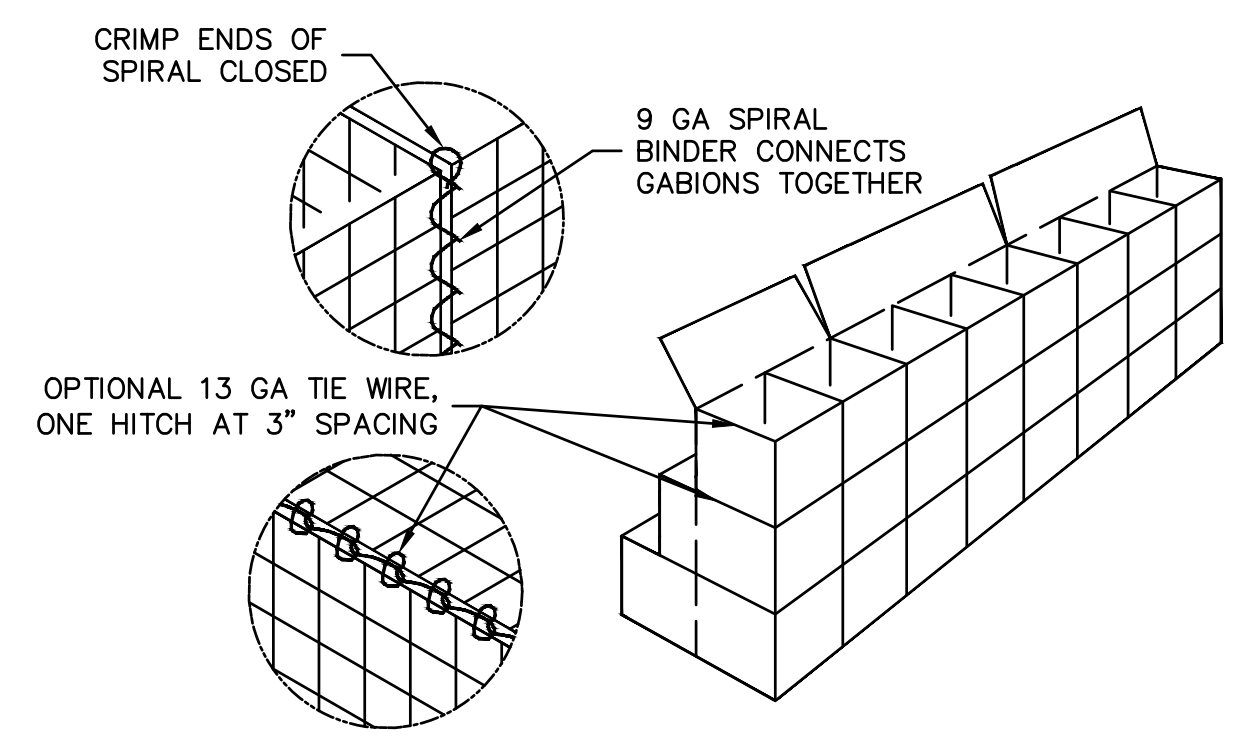
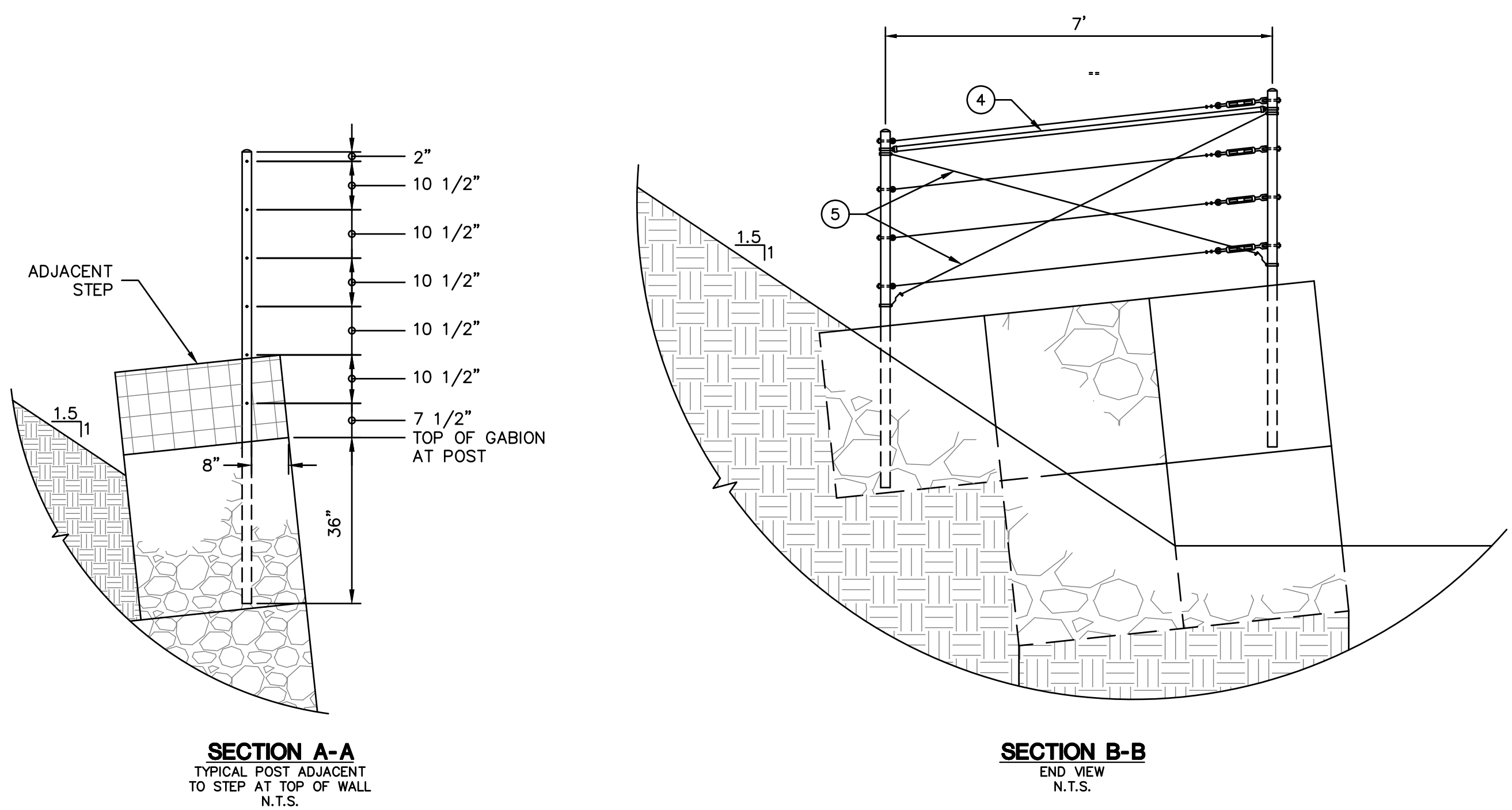
DATE: JANUARY 24, 2018
 PROJECT ENGINEER: [Signature]

CITY OF REDDING
 PUBLIC WORKS DEPARTMENT

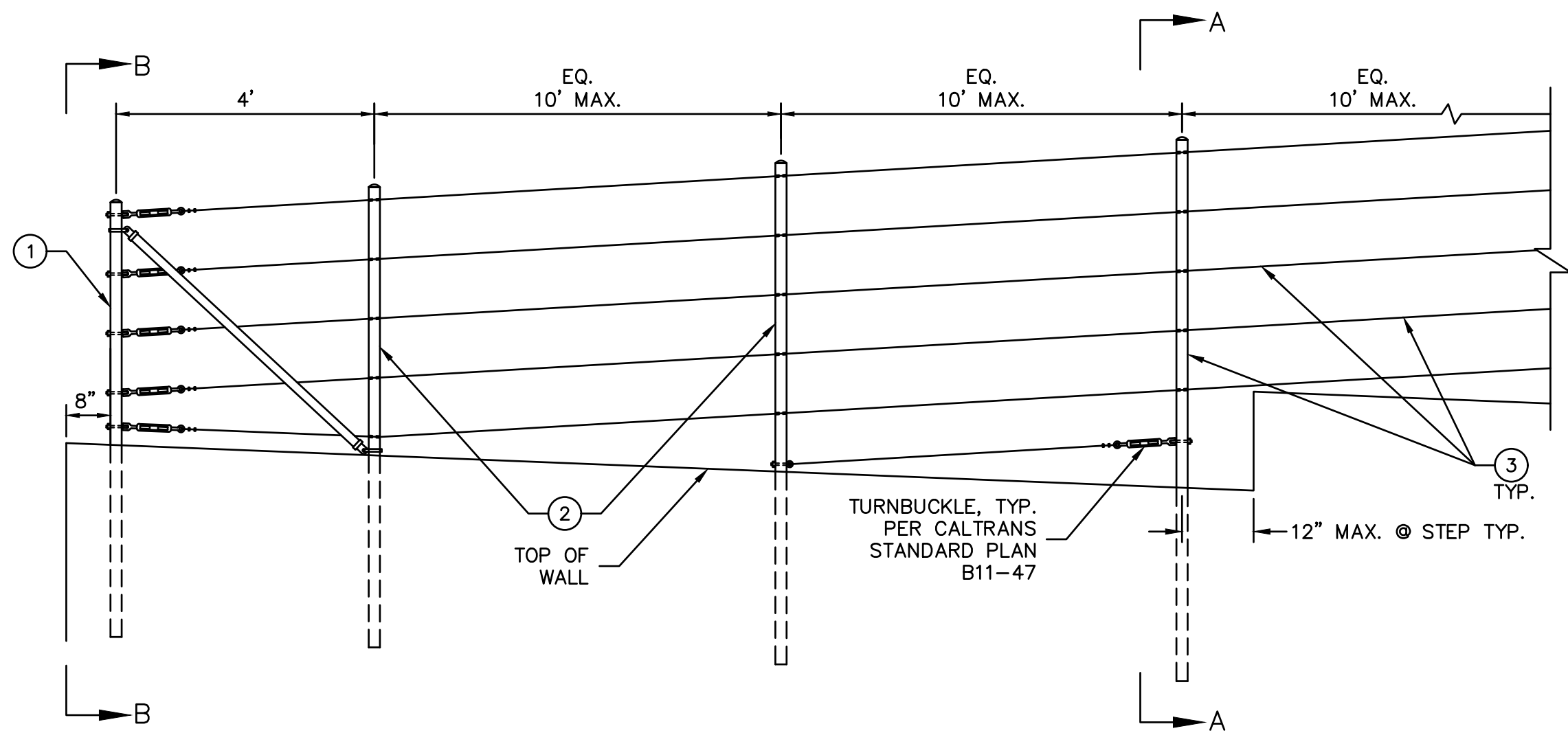
QUARTZ HILL ROAD IMPROVEMENTS
 BID. SCH. NO. 4950

CONSTRUCTION DETAILS

JOB NO. 2280
 ORIGINAL SCALE: 1" = 20'
 DATE: 01/24/18
 SHEET 22 OF 30



- GABION NOTES:**
- GABION SIZES ARE EXPRESSED IN FEET.
 - GABIONS WHICH ARE TO BE CONNECTED TOGETHER SIDE-TO-SIDE OR END-TO-END, MAY BE PROVIDED OPEN-SIDED OR OPEN-ENDED AS SHOWN.
 - GABIONS SHALL BE MANUFACTURED OF 3"x3" WELDED WIRE MESH, 9 GA. WITH 0.9 OZ/SF ZINC COATING.
 - A JOINT CONNECTION MUST BE MADE WHERE ANY PANEL EDGE MEETS ANOTHER PANEL. THIS INCLUDES ADJACENT GABION BASKETS, INDIVIDUAL PANELS WITHIN A BASKET, DIAPHRAGM, ETC.
 - PLACE ROCK IN END GABION CELL FIRST, AND CONTINUE BY FILLING INTERIOR GABION CELLS.



- NOTES:**
- END POST & BRACED END SPAN PER CALTRANS STANDARD PLAN B11-47.
 - INTERMEDIATE POST HEIGHT VARIABLE TO ACCOUNT FOR SLOPED CABLES OVER STEPPED WALL.
 - CONSTRUCT B11-47 (MODIFIED) CABLE RAILING SUCH THAT A 12" Ø SPHERE CANNOT PASS. DISTANCE FROM TOP OF CABLE TO TOP OF GABION VARIES FROM 42" MINIMUM TO 60" ± MAXIMUM. POSTS EMBEDDED 36" INTO GABION AT 8" CLEAR FROM TOP FACE OF WALL.
 - PIPE NPS 1 1/4 STANDARD.
 - 3/8" Ø TRUSS RODS.
 - MAXIMUM DISTANCE BETWEEN TURNBUCKLES SHALL BE 200' ±.
 - INTERMEDIATE TURNBUCKLES TO BE PLACED IN ADJACENT SPANS.
 - CABLE SHALL NOT BE SPLICED BETWEEN INTERMEDIATE TURNBUCKLES AND END POSTS.
 - POSTS TO BE VERTICAL.
 - ALIGNMENT OF HOLES IN POSTS MAY VARY TO CONFORM TO SLOPE OF TOP OF RETAINING WALL.
 - THE CONTRACTOR SHALL VERIFY ALL DEPENDENT DIMENSIONS IN THE FIELD BEFORE ORDERING OR FABRICATING ANY MATERIAL.
 - POST POCKETS TO BE 8" CLEAR FROM FACE OF WALL.

DESIGNED BY: TUM
DRAWN BY: TUM

CITY OF REDDING RECORD DRAWING _____ DATE _____

ORIGINAL SCALE IN INCHES: 0 1 2

PROJECT ENGINEER: [Signature]
DATE: JANUARY 24, 2018
EXP. 6/30/19

CITY OF REDDING
PUBLIC WORKS DEPARTMENT

QUARTZ HILL ROAD IMPROVEMENTS
CONSTRUCTION DETAILS

JOB NO. 2280
BID. SCH. NO. 4950

A-27979
ORIGINAL SCALE: N/A
DATE: 01/24/18
SHEET 23 OF 30