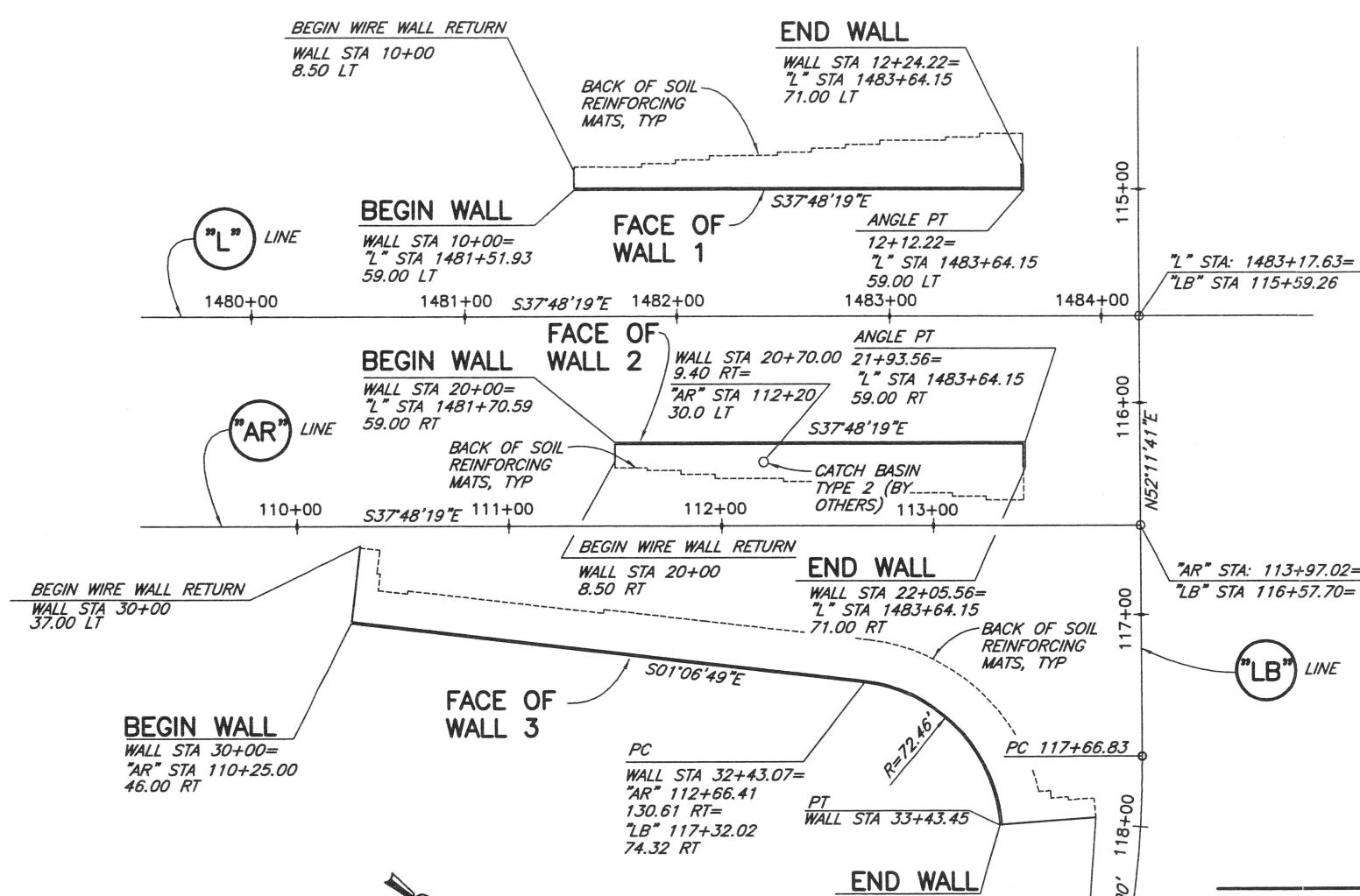


CAD: I:\2007\007002-HILFIKER\007002-080-RUSHROAD\SHN\007002-080-ALGN-1-2-3.DWG (HRW 070530 CE)



**MATERIAL LIST- WALL 1**

BASE DEPTH	CAP MAT W4.5xW3.5	PRONGLESS MAT W4.5xW3.5	STANDARD MAT W4.5xW4	CAP MAT W7xW3.5	PRONGLESS MAT W7xW3.5	STANDARD MAT W7xW4	STANDARD MAT W9.5xW4
26'-3"	-	-	-	-	-	12	13
26'-0"	3	3	-	-	-	-	-
24'-6"	-	-	-	-	-	10	4
24'-0"	2	2	-	-	-	-	-
23'-0"	4	4	-	-	-	-	-
22'-9"	-	-	-	-	-	20	7
21'-0"	2	2	-	-	-	12	-
19'-3"	-	-	-	-	-	15	6
19'-0"	2	2	-	1	1	-	-
17'-6"	-	-	-	-	-	10	-
17'-0"	2	2	-	-	-	-	-
16'-0"	4	4	-	-	-	-	-
15'-9"	-	-	-	-	-	17	-
14'-0"	2	2	-	-	-	7	-
12'-3"	-	-	-	-	-	6	-
12'-0"	2	2	-	-	-	-	-
11'-0"	4	4	-	-	-	-	-
10'-6"	-	-	-	-	-	9	-
9'-0"	-	-	-	-	-	-	-
5'-0"	1	1	2	-	-	-	-

WALL FACE SUPPLIED: 2,952 SQ FT

WALL BACKFILL\*: 2,080 CY

BACKING MATS (2'-0" HIGH): 176 EA

BACKING MATS (3'-0" HIGH): 11 EA

CONSTRUCTION GEOTEXTILE (2'-6" WIDE): 1,496 LF

HOG RINGS: 4,300 EA

PLIERS: 3 EA

**NOTES**

ALL STEEL TO BE GALVANIZED EXCEPT AS INDICATED

< > INDICATES BLACK STEEL (NON-GALVANIZED) AND ITEMS RELATED TO NON-GALVANIZED WALLS

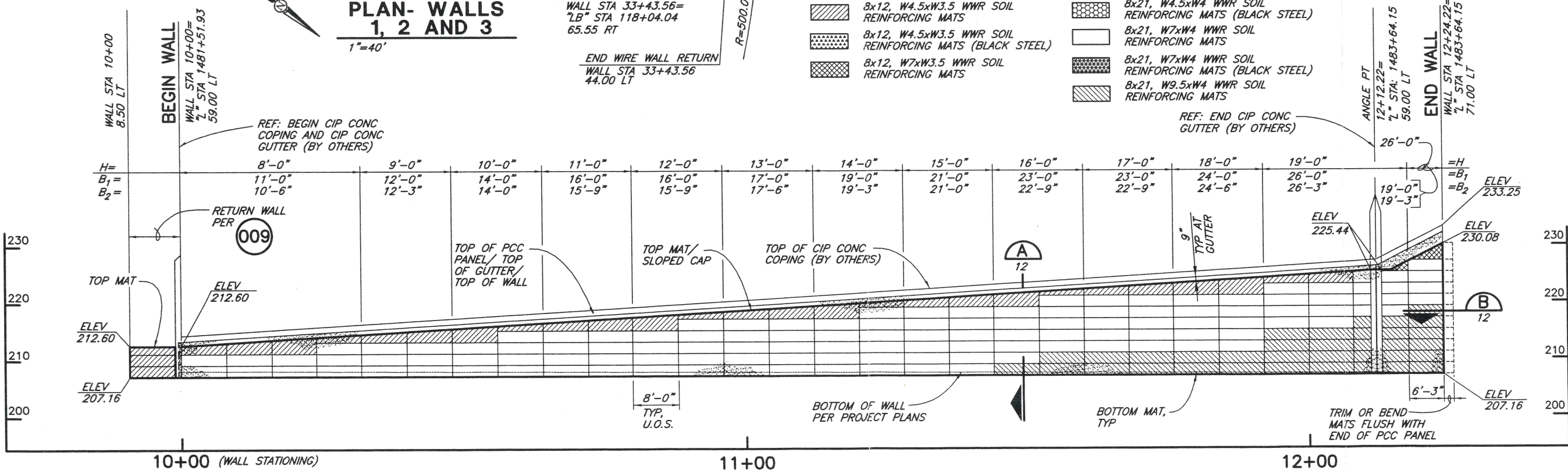
\* NEAT, TOP MAT TO BOTTOM MAT

**WWR MAT LEGEND**

	8x12, W4.5xW3.5 WWR SOIL REINFORCING MATS		8x21, W4.5xW4 WWR SOIL REINFORCING MATS (BLACK STEEL)
	8x12, W4.5xW3.5 WWR SOIL REINFORCING MATS (BLACK STEEL)		8x21, W7xW4 WWR SOIL REINFORCING MATS
	8x12, W7xW3.5 WWR SOIL REINFORCING MATS		8x21, W7xW4 WWR SOIL REINFORCING MATS (BLACK STEEL)
			8x21, W9.5xW4 WWR SOIL REINFORCING MATS

**DESIGN NOTES**

- DESIGN IS BASED ON THE ASSUMPTION THAT BACKFILL WITHIN THE REINFORCED SOIL MASS, METHODS OF CONSTRUCTION AND QUALITY OF MATERIALS CONFORM TO THE REQUIREMENTS OF HILFIKER RETAINING WALLS. IF ACTUAL CHARACTERISTICS, GRADES OR DIMENSIONS OF SOIL MATERIALS DIFFER FROM THOSE LISTED ABOVE OR SHOWN ON THE PLANS HILFIKER RETAINING WALLS SHALL BE NOTIFIED TO EVALUATE THE NEED TO REDESIGN.
- THE DESIGN REQUIRES A NON-SATURATED BACKFILL. SURFACE AND SUB-SURFACE DRAINAGE CONTROL MAY BE REQUIRED TO PREVENT SATURATION OF THE BACKFILL OR RELIEVE HYDROSTATIC PRESSURES. DRAINAGE CONTROL SHALL BE AS SPECIFIED IN THE PROJECT PLANS AND SPECIFICATIONS OR AS DIRECTED BY THE OWNER'S ENGINEER. PAYMENT FOR DRAINAGE SHALL BE AS SPECIFIED IN THE PROJECT SPECIFICATIONS.
- REFERENCE DOCUMENTS: 11x17 XEROX COPIES OF CONTRACT PLANS FOR RUSH ROAD TO 13TH STREET, I-5, MP 72.81 TO MP 76.55, F.A. PROJECT NO. HP-IND-0052(185), PREPARED BY WASHINGTON STATE DEPARTMENT OF TRANSPORTATION, VOLUME 1 OF 3, 2 OF 3 AND 3 OF 3. IN ADDITION, WASHINGTON STATE DEPARTMENT OF TRANSPORTATION STANDARD PLAN D-3 WAS USED.



VERIFY SCALES: BAR IS ONE INCH ON ORIGINAL DRAWING. IF ANY DIMENSIONS IN THIS DRAWING DO NOT CONFORM TO THE SCALES ACCORDINGLY.

CONSULTING ENGINEERS & GEOLOGISTS, INC. (707) 441-8855 812 W. Wabash Eureka, CA 95501 FAX (707) 441-8877

**SH**

DESIGN	K/JM	DATE	9/21/07
DR./SQ. ROOM		REVISION	
CHK		REVIEW COMMENT	
APVD		REVISIONS	

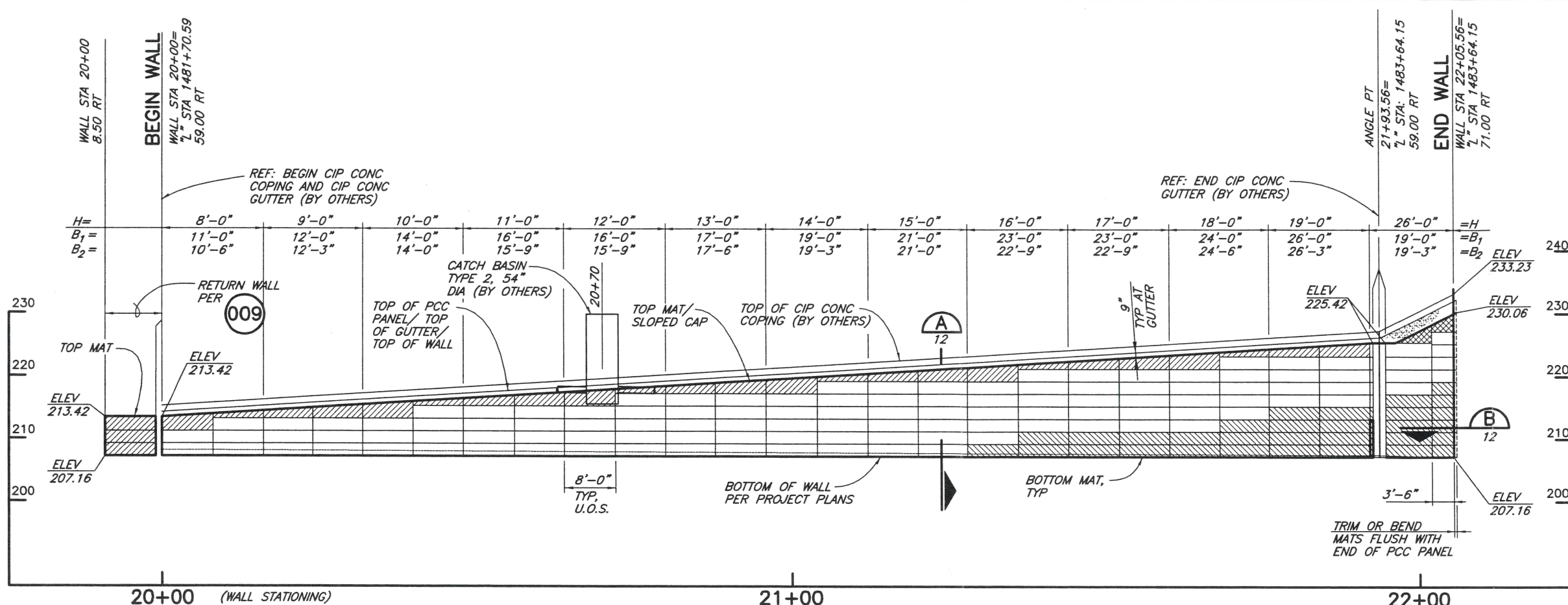
RUSH ROAD TO 13TH STREET SCARSELLA BROS. INC. LEWIS COUNTY, WASHINGTON

**PLAN, ELEVATION NOTES AND MATERIAL LIST**

SHEET 1 OF 16  
DATE 8/24/07  
PROJ. NO. 007002.080

THE DESIGN CONTAINED ON THESE DRAWINGS IS BASED ON INFORMATION PROVIDED BY THE OWNER. ON THE BASIS OF THIS INFORMATION, THE HILFIKER COMPANY HAS DESIGNED, AND IS RESPONSIBLE FOR THE INTERNAL STABILITY OF THE STRUCTURE ONLY. EXTERNAL STABILITY, INCLUDING FOUNDATION AND SLOPE STABILITY, IS THE RESPONSIBILITY OF THE OWNER.

CAD: I:\2007\007002-HILFIKER\007002.080-RUSHROAD\SHN\007002-080-ALGN-1-2-3.DWG  
(HRW 070530 CE)



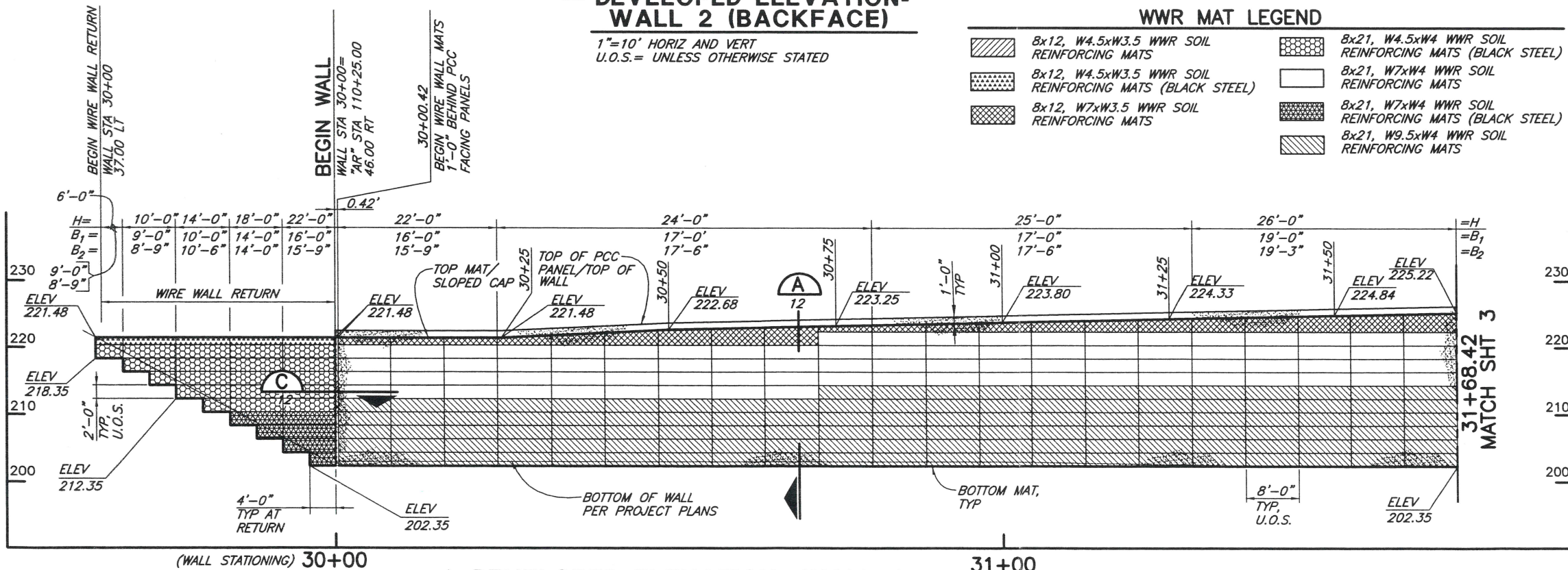
**DEVELOPED ELEVATION-WALL 2 (BACKFACE)**

1"=10' HORIZ AND VERT  
U.O.S.= UNLESS OTHERWISE STATED

**WWR MAT LEGEND**

	8x12, W4.5xW3.5 WWR SOIL REINFORCING MATS		8x21, W4.5xW4 WWR SOIL REINFORCING MATS (BLACK STEEL)
	8x12, W4.5xW3.5 WWR SOIL REINFORCING MATS (BLACK STEEL)		8x21, W7xW4 WWR SOIL REINFORCING MATS
	8x12, W7xW3.5 WWR SOIL REINFORCING MATS		8x21, W7xW4 WWR SOIL REINFORCING MATS (BLACK STEEL)
			8x21, W9.5xW4 WWR SOIL REINFORCING MATS

**NOTE**  
FOR WALL 2 MATERIAL LIST, SEE SHEET 3



**DEVELOPED ELEVATION-WALL 3**

1"=10' HORIZ AND VERT  
U.O.S.= UNLESS OTHERWISE STATED

NOTE: FOR WALL 3 MATERIAL LIST SEE SHT 3

THE DESIGN CONTAINED ON THESE DRAWINGS IS BASED ON INFORMATION PROVIDED BY THE OWNER. ON THE BASIS OF THIS INFORMATION, THE HILFIKER COMPANY HAS DESIGNED, AND IS RESPONSIBLE FOR THE INTERNAL STABILITY OF THE STRUCTURE ONLY. EXTERNAL STABILITY, INCLUDING FOUNDATION AND SLOPE STABILITY, IS THE RESPONSIBILITY OF THE OWNER.



**E.R.S.**  
**HILFIKER RETAINING WALLS**  
P.O. BOX 2012 EUREKA, CALIFORNIA 95502-2012  
PHONE: (707) 443-5093 FAX: (707) 443-2891

VERIFY SCALES  
BAR IS ONE INCH ON ORIGINAL DRAWING  
IF NOT ONE INCH ON THIS SHEET, ADJUST SCALES ACCORDINGLY

CONSULTING ENGINEERS & GEOLOGISTS, INC.  
812 W. Wabasha  
Eureka, CA 95501 FAX (707) 441-8877

**SAI**

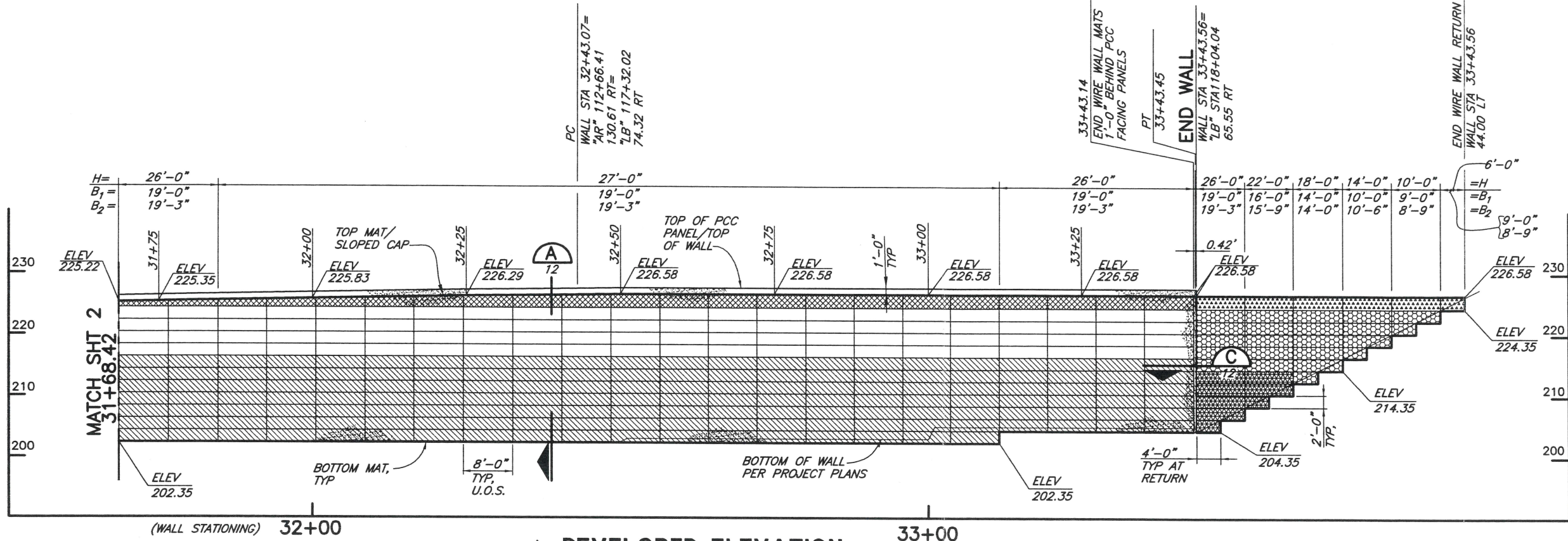
DESIGN	K/J/V	DATE	9/21/07
DR	JSD, RDW	NO.	
CHK		REVISION	
APP'D		REVIEW COMMENT	

RUSH ROAD TO 13TH STREET  
SCARSELLA BROS. INC.  
LEWIS COUNTY, WASHINGTON

**ELEVATIONS**

SHEET **2** OF 16  
DATE 8/24/07  
PROJ. NO. 007002.080

CAD: I:\2007\007002--HILFIKER\007002-080--RUSHROAD\SHW\007002-080--ALGN-1-2-3.DWG  
(HRW 070530 CE)



**△ DEVELOPED ELEVATION- WALL 3 (CONTINUED)**

1"=10' HORIZ AND VERT  
U.O.S.= UNLESS OTHERWISE STATED

**WWR MAT LEGEND**

- 8x12, W4.5xW3.5 WWR SOIL REINFORCING MATS
- 8x12, W4.5xW3.5 WWR SOIL REINFORCING MATS (BLACK STEEL)
- 8x12, W7xW3.5 WWR SOIL REINFORCING MATS
- 8x21, W4.5xW4 WWR SOIL REINFORCING MATS (BLACK STEEL)
- 8x21, W7xW4 WWR SOIL REINFORCING MATS
- 8x21, W7xW4 WWR SOIL REINFORCING MATS (BLACK STEEL)
- 8x21, W9.5xW4 WWR SOIL REINFORCING MATS

**△ MATERIAL LIST- WALL 2**

BASE DEPTH	CAP MAT W4.5xW3.5	PRONGLESS MAT W4.5xW3.5	STANDARD MAT W4.5xW4	CAP MAT W7xW3.5	PRONGLESS MAT W7xW3.5	STANDARD MAT W7xW4	STANDARD MAT W9.5xW4
26'-3"	-	-	-	-	-	8	8
26'-0"	2	2	-	-	-	-	-
24'-6"	-	-	-	-	-	10	5
24'-0"	2	2	-	-	-	-	-
23'-0"	4	4	-	-	-	-	-
22'-9"	-	-	-	-	-	20	7
21'-0"	2	2	-	-	-	12	-
19'-3"	-	-	-	-	-	17	8
19'-0"	2	2	-	2	2	-	-
17'-6"	-	-	-	-	-	10	-
17'-0"	2	2	-	-	-	-	-
16'-0"	4	4	-	-	-	-	-
15'-9"	-	-	-	-	-	17	-
14'-0"	2	2	-	-	-	-	-
12'-3"	-	-	-	-	-	6	-
12'-0"	2	2	-	-	-	-	-
11'-0"	2	2	-	-	-	-	-
10'-6"	-	-	-	-	-	5	-
9'-0"	-	-	-	-	-	-	-
5'-0"	1	1	2	-	-	-	-
WALL FACE SUPPLIED		2,792 SQ FT					
WALL BACKFILL*		1,962 CY					
BACKING MATS (2'-0" HIGH)		166 EA					
BACKING MATS (3'-0" HIGH)		11 EA					
CONSTRUCTION GEOTEXTILE (2'-6" WIDE)		1,416 LF					
HOG RINGS		4,100 EA					
PLIERS		3 EA					

**NOTES**

ALL STEEL TO BE GALVANIZED EXCEPT AS INDICATED  
< > INDICATES BLACK STEEL (NON-GALVANIZED)  
AND ITEMS RELATED TO NON-GALVANIZED WALLS  
\* NEAT, TOP MAT TO BOTTOM MAT

**△ MATERIAL LIST- WALL 3**

BASE DEPTH	CAP MAT W4.5xW3.5	PRONGLESS MAT W4.5xW3.5	CAP MAT W7xW3.5	PRONGLESS MAT W7xW3.5	STANDARD MAT W4.5xW4	STANDARD MAT W7xW4	STANDARD MAT W9.5xW4
19'-3"	-	-	-	-	<5>	108	<5> 180
19'-0"	<1>	<1>	27	27	-	40	84
17'-6"	-	-	-	-	-	-	-
17'-0"	-	-	13	13	-	-	-
16'-0"	<2>	<2>	3	3	-	-	-
15'-9"	-	-	-	-	<10>	24	<6> 3
14'-0"	<2>	<2>	-	-	<10>	-	<2> -
10'-6"	-	-	-	-	<8>	-	-
10'-0"	<2>	<2>	-	-	-	-	-
9'-0"	<3>	<3>	-	-	-	-	-
8'-9"	-	-	-	-	<4>	-	-
WALL FACE SUPPLIED		7,776 SQ FT <960> SQ FT					
WALL BACKFILL*		5,286 CY <508> CY					
BACKING MATS (2'-0" HIGH)		478 EA <63> EA					
BACKING MATS (3'-0" HIGH)		8 EA					
CONSTRUCTION GEOTEXTILE (2'-6" WIDE)		3,888 LF <504> LF					
HOG RINGS		11,624 EA <1,500> EA					
PLIERS		5 EA <2> EA					

**NOTES**

ALL STEEL TO BE GALVANIZED EXCEPT AS INDICATED  
< > INDICATES BLACK STEEL (NON-GALVANIZED)  
AND ITEMS RELATED TO NON-GALVANIZED WALLS  
\* NEAT, TOP MAT TO BOTTOM MAT

E.R.S.



**HILFIKER RETAINING WALLS**  
P.O. BOX 2012 EUREKA, CALIFORNIA 95502-2012  
PHONE: (707) 443-5093 FAX: (707) 443-2891

THE DESIGN CONTAINED ON THESE DRAWINGS IS BASED ON INFORMATION PROVIDED BY THE OWNER. ON THE BASIS OF THIS INFORMATION, THE HILFIKER COMPANY HAS DESIGNED, AND IS RESPONSIBLE FOR THE INTERNAL STABILITY OF THE STRUCTURE ONLY. EXTERNAL STABILITY, INCLUDING FOUNDATION AND SLOPE STABILITY, IS THE RESPONSIBILITY OF THE OWNER.

VERIFY SCALES  
BASE IS ONE INCH ON ORIGINAL DRAWING  
IF NOT ONE INCH ON THIS SHEET, ADJUST SCALES ACCORDINGLY

CONSULTING ENGINEERS & GEOLOGISTS, INC.  
812 W. Wabasha Eureka, CA 95501  
(707) 441-8855  
(707) 441-8877



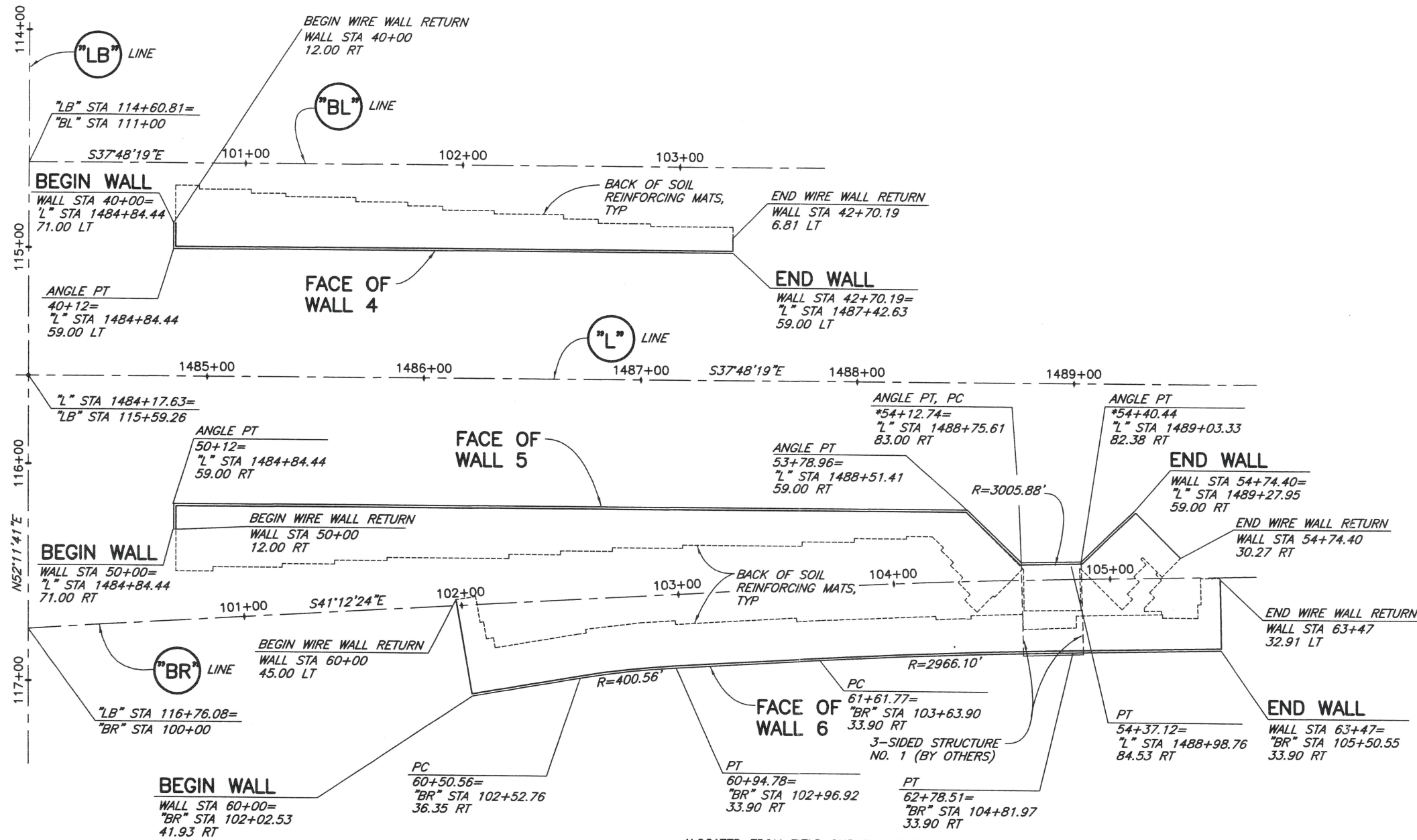
REVIEW COMMENT REVISIONS  
K/JN BY  
9/21/07 DATE  
NO. 1

DESIGN K/JN  
DRAWING JSD, RDW  
CHECK CHK  
APPROVED APD

RUSH ROAD TO 13TH STREET  
SCARSELLA BROS. INC.  
LEWIS COUNTY, WASHINGTON  
ELEVATION AND MATERIAL LISTS

SHEET 3 OF 16  
DATE 8/24/07  
PROJ. NO. 007002.080

CAD: I:\2007\007002-HILFIKER\007002.080-RUSHROAD\SHW\007002-080-WALLS4-6.DWG  
(HRW 070530 GE)



▲ \*LOCATED FROM FIELD SURVEY INFORMATION PROVIDED BY CONTRACTOR  
▲ PLAN- WALLS 4, 5 AND 6  
1"=30'

THE DESIGN CONTAINED ON THESE DRAWINGS IS BASED ON INFORMATION PROVIDED BY THE OWNER. ON THE BASIS OF THIS INFORMATION, THE HILFIKER COMPANY HAS DESIGNED, AND IS RESPONSIBLE FOR THE INTERNAL STABILITY OF THE STRUCTURE ONLY. EXTERNAL STABILITY, INCLUDING FOUNDATION AND SLOPE STABILITY, IS THE RESPONSIBILITY OF THE OWNER.



**E.R.S.**  
**HILFIKER RETAINING WALLS**  
P.O. BOX 2012 EUREKA, CALIFORNIA 95502-2012  
PHONE: (707) 443-5093 FAX: (707) 443-2891

VERIFY SCALES  
BASED ON ONE INCH ON ORIGINAL DRAWING  
IF NOT ONE INCH ON THIS SHEET, ADJUST SCALES ACCORDINGLY

**CONSULTING ENGINEERS & GEOLOGISTS, INC.**  
812 W. Wabasha  
Eureka, CA 95501  
FAX (707) 441-8855



NO.	REVISION	DATE	BY
1	REVIEW COMMENT REVISIONS	9/21/07	K/JN
2	BOTTOM OF WALL REVISIONS	2/04/08	K/JN
3	REVISE 3-SIDED STRUCTURE	J/11/08	K/JN

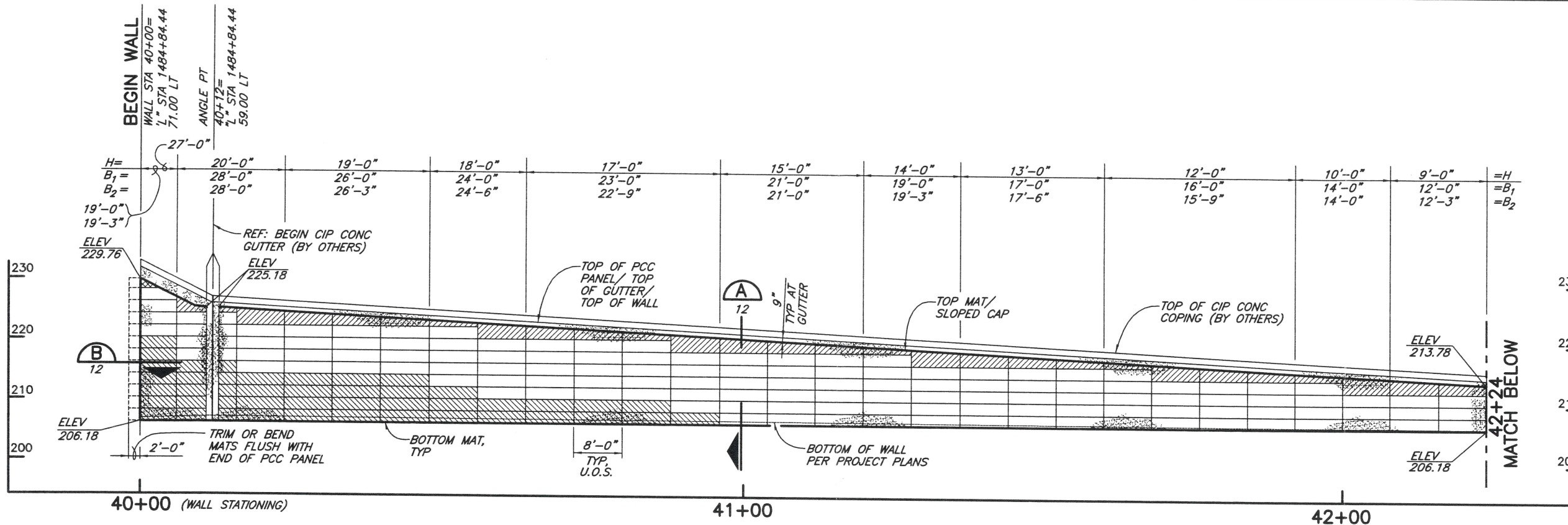
APVD	CHK	DR	DSGN
		JSD	K/JN

RUSH ROAD TO 13TH STREET  
SCARSELLA BROS. INC.  
LEWIS COUNTY, WASHINGTON

**PLANS**

SHEET	4 OF 16
DATE	8/24/07
PROJ. NO.	007002.080

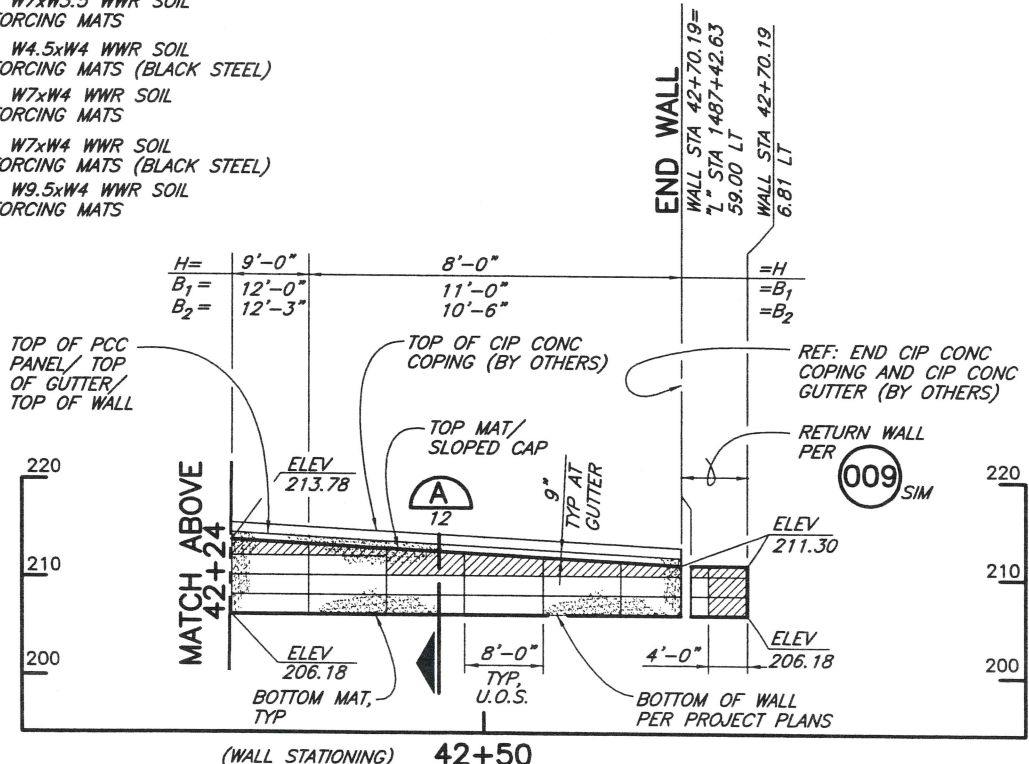
CAD: I:\2007\007002-HILFIKER\007002-080-RUSHROAD\SHW\007002-080-WALLS4-6.DWG (HRW 070530 CE)



**WWR MAT LEGEND**

- 8x12, W4.5xW3.5 WWR SOIL REINFORCING MATS
- 8x12, W4.5xW3.5 WWR SOIL REINFORCING MATS (BLACK STEEL)
- 8x12, W7xW3.5 WWR SOIL REINFORCING MATS
- 8x21, W4.5xW4 WWR SOIL REINFORCING MATS (BLACK STEEL)
- 8x21, W7xW4 WWR SOIL REINFORCING MATS
- 8x21, W7xW4 WWR SOIL REINFORCING MATS (BLACK STEEL)
- 8x21, W9.5xW4 WWR SOIL REINFORCING MATS

**DEVELOPED ELEVATION- WALL 4**  
 1"=10' HORIZ AND VERT  
 U.O.S.= UNLESS OTHERWISE STATED



**WWR MAT LEGEND**

- 8x12, W4.5xW3.5 WWR SOIL REINFORCING MATS
- 8x12, W4.5xW3.5 WWR SOIL REINFORCING MATS (BLACK STEEL)
- 8x12, W7xW3.5 WWR SOIL REINFORCING MATS
- 8x21, W4.5xW4 WWR SOIL REINFORCING MATS (BLACK STEEL)
- 8x21, W7xW4 WWR SOIL REINFORCING MATS
- 8x21, W7xW4 WWR SOIL REINFORCING MATS (BLACK STEEL)
- 8x21, W9.5xW4 WWR SOIL REINFORCING MATS

**MATERIAL LIST- WALL 4**

BASE DEPTH	CAP MAT W4.5xW3.5	PRONGLESS MAT W4.5xW3.5	STANDARD MAT W4.5xW4	CAP MAT W7xW3.5	PRONGLESS MAT W7xW3.5	STANDARD MAT W7xW4	STANDARD MAT W9.5xW4
28'-0"	2	2	-	-	-	8	9
26'-3"	-	-	-	-	-	12	12
26'-0"	3	3	-	-	-	-	-
24'-6"	-	-	-	-	-	10	5
24'-0"	2	2	-	-	-	-	-
23'-0"	4	4	-	-	-	-	-
22'-9"	-	-	-	-	-	20	7
21'-0"	3	3	-	-	-	18	-
19'-3"	-	-	-	-	-	15	7
19'-0"	2	2	-	1	1	-	-
17'-6"	-	-	-	-	-	15	-
17'-0"	3	3	-	-	-	-	-
16'-0"	4	4	-	-	-	-	-
15'-9"	-	-	-	-	-	17	-
14'-0"	2	2	-	-	-	7	-
12'-3"	-	-	-	-	-	9	-
12'-0"	3	3	-	-	-	-	-
11'-0"	5	5	-	-	-	-	-
10'-6"	-	-	-	-	-	11	-
9'-0"	-	-	-	-	-	-	-
5'-0"	1	1	1	-	-	-	-

**WALL FACE SUPPLIED** 3,592 SQ FT

**WALL BACKFILL\*** 2,601 CY

**BACKING MATS (2'-0" HIGH)** 213 EA

**BACKING MATS (3'-0" HIGH)** 13 EA

**CONSTRUCTION GEOTEXTILE (2'-6" WIDE)** 1,808 LF

**HOG RINGS** 5,300 EA

**PLIERS** 4 EA

**NOTES**

ALL STEEL TO BE GALVANIZED EXCEPT AS INDICATED

< > INDICATES BLACK STEEL (NON-GALVANIZED) AND ITEMS RELATED TO NON-GALVANIZED WALLS

\* NEAT, TOP MAT TO BOTTOM MAT

**DEVELOPED ELEVATION- WALL 4 (CONTINUED)**  
 1"=10' HORIZ AND VERT  
 U.O.S.= UNLESS OTHERWISE STATED

THE DESIGN CONTAINED ON THESE DRAWINGS IS BASED ON INFORMATION PROVIDED BY THE OWNER. ON THE BASIS OF THIS INFORMATION, THE HILFIKER COMPANY HAS DESIGNED, AND IS RESPONSIBLE FOR THE INTERNAL STABILITY OF THE STRUCTURE ONLY. EXTERNAL STABILITY, INCLUDING FOUNDATION AND SLOPE STABILITY, IS THE RESPONSIBILITY OF THE OWNER.

**E.R.S.**  
**HILFIKER RETAINING WALLS**  
 P.O. BOX 2012 EUREKA, CALIFORNIA 95502-2012  
 PHONE: (707) 443-5093 FAX: (707) 443-2891

VERIFY SCALES  
 BASE ON THE DRAWING OR ORIGINAL DRAWING  
 IF NOT ONE INCH ON THIS SHEET, ADJUST SCALES ACCORDINGLY

**CONSULTING ENGINEERS & GEOLOGISTS, INC.**  
 812 W. Wabasha  
 Eureka, CA 95501  
 (707) 441-8855  
 (707) 441-8877

**SAW**

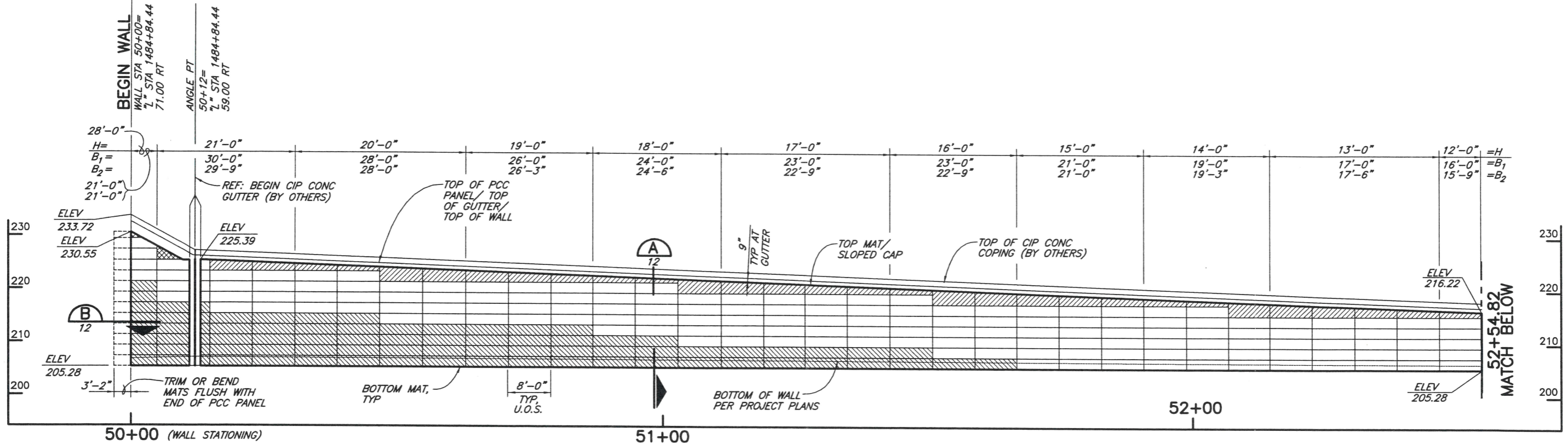
NO.	DATE	REVISION
1	9/21/07	REVIEW COMMENT

RUSH ROAD TO 13TH STREET  
 SCARSELLA BROS. INC.  
 LEWIS COUNTY, WASHINGTON

**ELEVATIONS AND MATERIAL LIST**

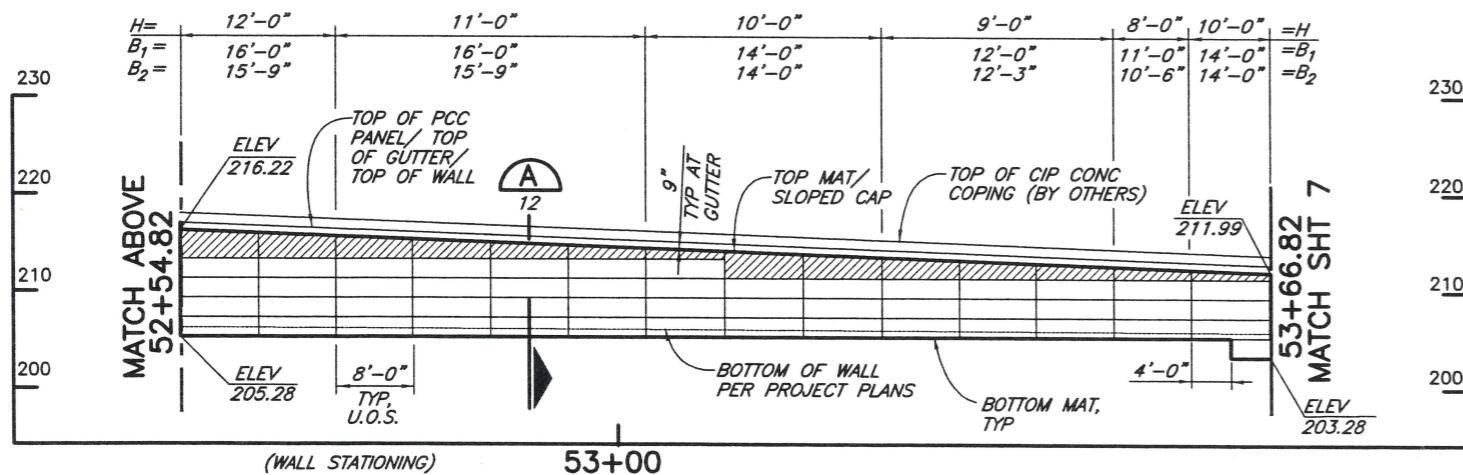
SHEET 5 OF 16  
 DATE 8/24/07  
 PROJ. NO. 007002.080

CAD: I:\2007\007002-HILFIKER\007002-080-RUSHROAD\SHW\007002-080-WALLS4-6.DWG (HRW 070530 CE)



**DEVELOPED ELEVATION- WALL 5 (BACKFACE)**

1"=10' HORIZ AND VERT  
U.O.S.= UNLESS OTHERWISE STATED



**DEVELOPED ELEVATION- WALL 5 (BACKFACE) (CONTINUED)**

1"=10' HORIZ AND VERT  
U.O.S.= UNLESS OTHERWISE STATED

**WWR MAT LEGEND**

- 8x12, W4.5xW3.5 WWR SOIL REINFORCING MATS
- 8x12, W4.5xW3.5 WWR SOIL REINFORCING MATS (BLACK STEEL)
- 8x12, W7xW3.5 WWR SOIL REINFORCING MATS
- 8x21, W4.5xW4 WWR SOIL REINFORCING MATS (BLACK STEEL)
- 8x21, W7xW4 WWR SOIL REINFORCING MATS
- 8x21, W7xW4 WWR SOIL REINFORCING MATS (BLACK STEEL)
- 8x21, W9.5xW4 WWR SOIL REINFORCING MATS

**MATERIAL LIST- WALL 5**

BASE DEPTH	CAP MAT W4.5xW3.5	PRONGLESS MAT W4.5xW3.5	STANDARD MAT W4.5xW4	CAP MAT W7xW3.5	PRONGLESS MAT W7xW3.5	STANDARD MAT W7xW4	STANDARD MAT W9.5xW4
30'-0"	3	3	-	-	-	-	-
29'-9"	-	-	-	1	-	16	21
28'-0"	5	5	-	-	-	20	22
26'-3"	-	-	-	-	-	16	16
26'-0"	4	4	-	-	-	-	-
24'-6"	-	-	-	-	-	20	10
24'-0"	4	4	-	-	-	-	-
23'-0"	8	8	-	-	-	-	-
22'-9"	-	-	-	-	-	41	14
21'-0"	5	5	-	-	-	34	8
19'-3"	-	-	-	1	1	42	2
19'-0"	8	8	-	-	-	-	-
17'-6"	-	-	-	-	-	25	-
17'-0"	5	5	-	-	-	-	-
16'-0"	8	8	-	-	-	-	-
15'-9"	-	-	-	-	-	33	-
14'-0"	4	4	-	-	-	13	-
12'-3"	-	-	-	<11>	-	9	-
12'-0"	3	<3>	3	<3>	-	-	-
11'-0"	1	1	-	-	-	-	-
10'-6"	-	-	-	-	-	3	-
WALL FACE SUPPLIED		7,496 SQ FT <224> SQ FT					
WALL BACKFILL*		5,541 CY <101> CY					
BACKING MATS (2'-0" HIGH)		412 EA <15> EA					
BACKING MATS (3'-0" HIGH)		27 EA					
CONSTRUCTION GEOTEXTILE (2'-6" WIDE)		3,992 LF <120> LF					
HOG RINGS		10,200 EA <400> EA					
PLIERS		5 EA <1> EA					

**NOTES**  
ALL STEEL TO BE GALVANIZED EXCEPT AS INDICATED  
< > INDICATES BLACK STEEL (NON-GALVANIZED) AND ITEMS RELATED TO NON-GALVANIZED WALLS  
\* NEAT, TOP MAT TO BOTTOM MAT

THE DESIGN CONTAINED ON THESE DRAWINGS IS BASED ON INFORMATION PROVIDED BY THE OWNER. ON THE BASIS OF THIS INFORMATION, THE HILFIKER COMPANY HAS DESIGNED, AND IS RESPONSIBLE FOR THE INTERNAL STABILITY OF THE STRUCTURE ONLY. EXTERNAL STABILITY, INCLUDING FOUNDATION AND SLOPE STABILITY, IS THE RESPONSIBILITY OF THE OWNER.



**E.R.S. HILFIKER RETAINING WALLS**  
P.O. BOX 2012 EUREKA, CALIFORNIA 95502-2012  
PHONE: (707) 443-5093 FAX: (707) 443-2891

VERIFY SCALES  
BAR IS ONE INCH ON ORIGINAL DRAWING  
IF NOT ONE INCH ON THIS SHEET, ADJUST SCALES ACCORDINGLY

**CONSULTING ENGINEERS & GEOLOGISTS, INC.**  
812 W. Wabasha  
Eureka, CA 95501 FAX (707)441-8877



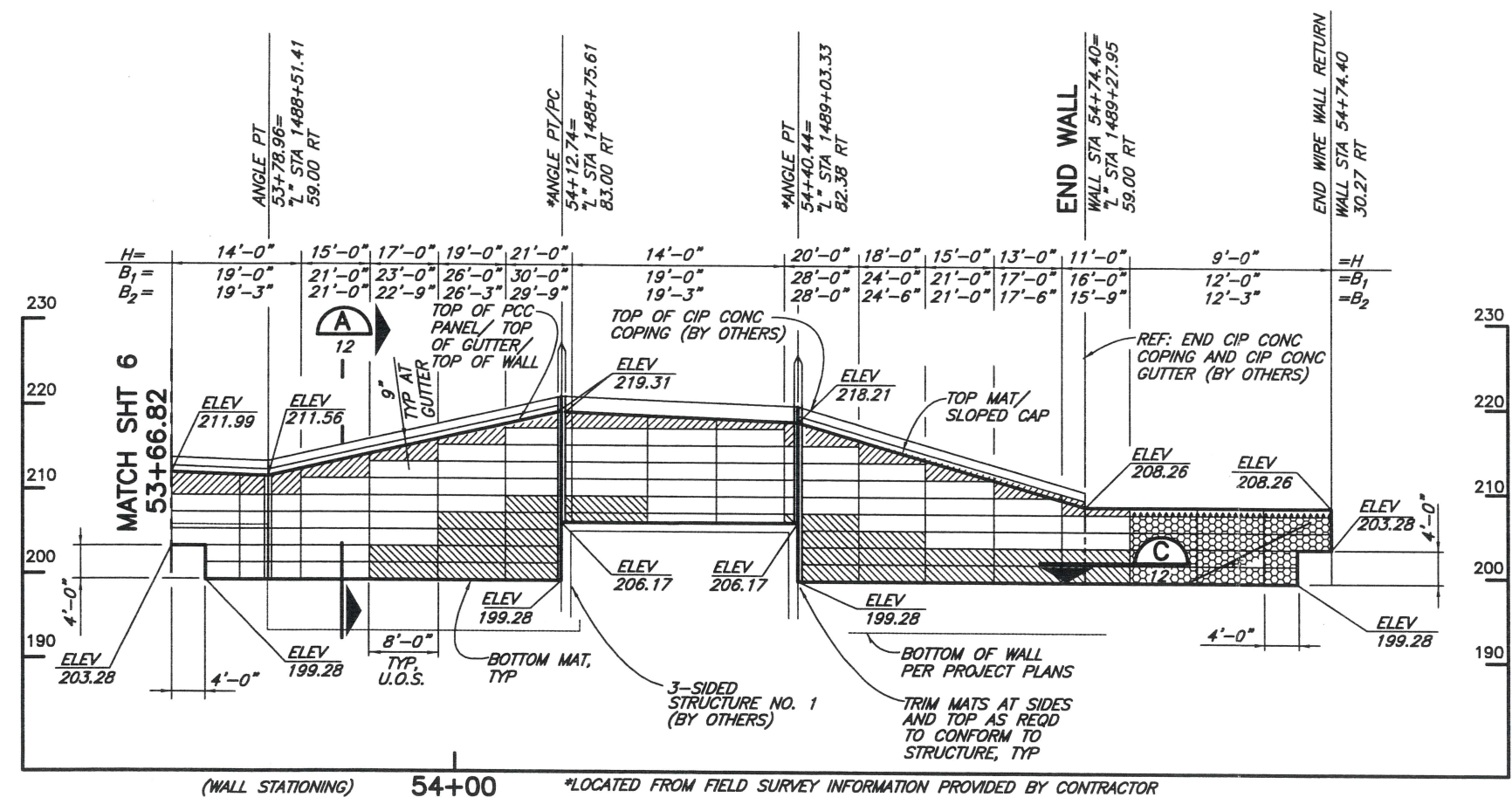
NO.	DATE	REVISION
2/04/08	9/21/07	BOTTOM OF WALL REVISIONS
		REVIEW COMMENT REVISIONS

NO.	DATE	REVISION

RUSH ROAD TO 13TH STREET  
SCARSELLA BROS. INC.  
LEWIS COUNTY, WASHINGTON

**ELEVATIONS AND MATERIAL LIST**

CAD: I:\2007\007002-HILFIKER\007002.080-RUSHROAD\SHW\007002-080-WALLS4-6.DWG  
(HW 070530 CE)



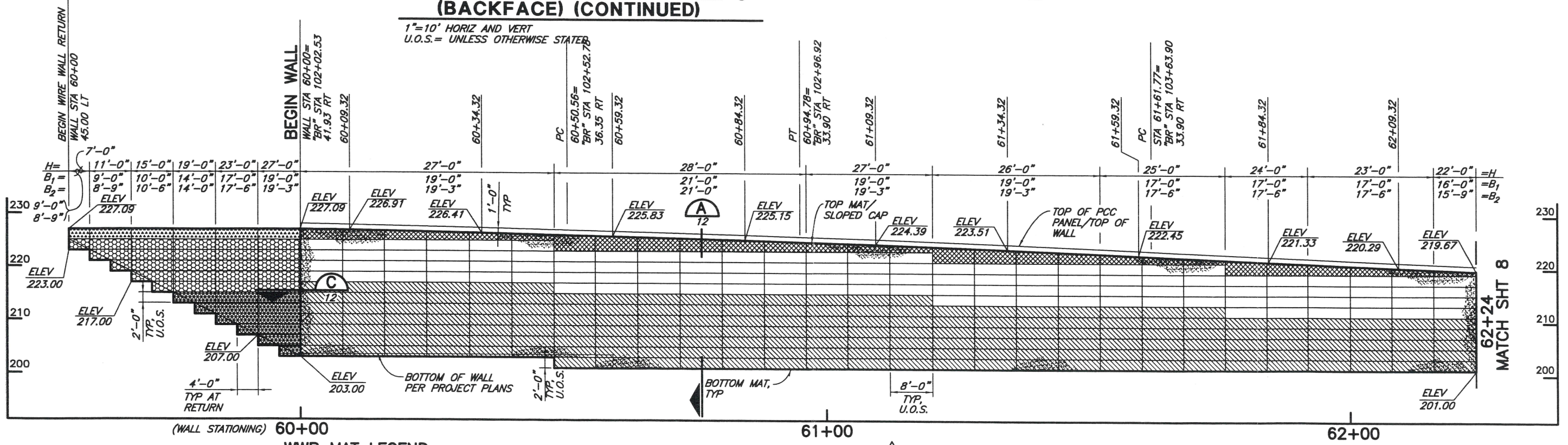
**WWR MAT LEGEND**

	8x12, W4.5xW3.5 WWR SOIL REINFORCING MATS
	8x12, W4.5xW3.5 WWR SOIL REINFORCING MATS (BLACK STEEL)
	8x12, W7xW3.5 WWR SOIL REINFORCING MATS
	8x21, W4.5xW4 WWR SOIL REINFORCING MATS (BLACK STEEL)
	8x21, W7xW4 WWR SOIL REINFORCING MATS
	8x21, W9.5xW4 WWR SOIL REINFORCING MATS (BLACK STEEL)

**NOTE**  
FOR WALL 6 MATERIAL LIST SEE SHEET 8

**DEVELOPED ELEVATION- WALL 5 (BACKFACE) (CONTINUED)**

1"=10' HORIZ AND VERT  
U.O.S.= UNLESS OTHERWISE STATED



**WWR MAT LEGEND**

	8x12, W4.5xW3.5 WWR SOIL REINFORCING MATS		8x21, W4.5xW4 WWR SOIL REINFORCING MATS		8x21, W9.5xW4 WWR SOIL REINFORCING MATS
	8x12, W4.5xW3.5 WWR SOIL REINFORCING MATS (BLACK STEEL)		8x21, W7xW4 WWR SOIL REINFORCING MATS		
	8x12, W7xW3.5 WWR SOIL REINFORCING MATS		8x21, W7xW4 WWR SOIL REINFORCING MATS (BLACK STEEL)		

**DEVELOPED ELEVATION- WALL 6**

1"=10' HORIZ AND VERT  
U.O.S.= UNLESS OTHERWISE STATED



**E.R.S.**  
**HILFIKER RETAINING WALLS**  
P.O. BOX 2012 EUREKA, CALIFORNIA 95502-2012  
PHONE: (707) 443-5093 FAX: (707) 443-2891

VERIFY SCALES  
BAR IS ONE INCH ON ORIGINAL DRAWING  
IF NOT ONE INCH ON THIS SHEET, ADJUST SCALES ACCORDINGLY

**CONSULTING ENGINEERS & GEOLOGISTS, INC.**  
912 W. Wabasha Eureka, CA 95501 FAX (707) 441-8855 (707) 441-8877

**SCW**

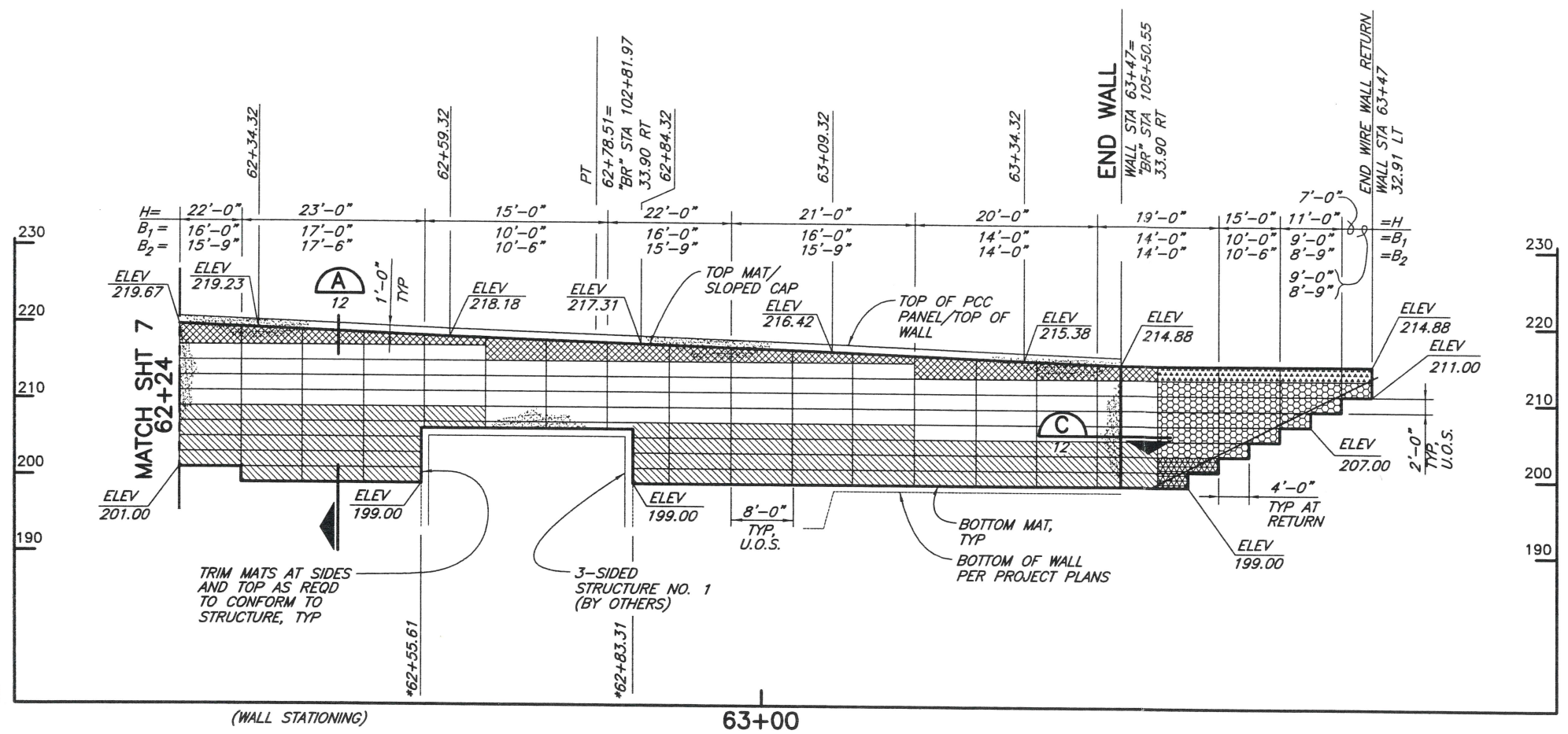
NO.	DATE	REVISION
1	3/11/08	REVISE 3-SIDED STRUCTURE
2	2/04/08	BOTTOM OF WALL REVISIONS
3	9/21/07	REVIEW COMMENT REVISIONS

RUSH ROAD TO 15TH STREET  
SCARSELLA BROS. INC.  
LEWIS COUNTY, WASHINGTON

**ELEVATIONS**

SHEET 7 OF 16  
DATE 8/24/07  
PROJ. NO. 007002.080

CAD: I:\2007\007002-HILFIKER\007002-080-RUSHROAD\SHW\007002-080-WALLS4-6.DWG (HRW 070530 CE)



\*LOCATED FROM FIELD SURVEY INFORMATION PROVIDED BY CONTRACTOR

**DEVELOPED ELEVATION- WALL 6**  
 1"=10' HORIZ AND VERT  
 U.O.S.= UNLESS OTHERWISE STATED

- WWR MAT LEGEND**
- 8x12, W4.5xW3.5 WWR SOIL REINFORCING MATS
  - 8x12, W4.5xW3.5 WWR SOIL REINFORCING MATS (BLACK STEEL)
  - 8x12, W7xW3.5 WWR SOIL REINFORCING MATS
  - 8x21, W4.5xW4 WWR SOIL REINFORCING MATS (BLACK STEEL)
  - 8x21, W7xW4 WWR SOIL REINFORCING MATS
  - 8x21, W7xW4 WWR SOIL REINFORCING MATS (BLACK STEEL)
  - 8x21, W9.5xW4 WWR SOIL REINFORCING MATS
  - 8x21, W7xW4 WWR SOIL REINFORCING MATS WITH INTERMEDIATE MATS

**MATERIAL LIST- WALL 6**

BASE DEPTH	CAP MAT W4.5xW3.5	PRONGLESS MAT W4.5xW3.5	STANDARD MAT W4.5xW4	CAP MAT W7xW3.5	PRONGLESS MAT W7xW3.5	STANDARD MAT W7xW4	STANDARD MAT W9.5xW4
21'-0"	-	-	-	6	6	-	42
19'-3"	-	-	<5>	-	-	24 <6>	87
19'-0"	-	<1>	-	13	13	-	-
17'-6"	-	-	<5>	-	-	44 <3>	58
17'-0"	-	<1>	-	11	11	-	-
16'-0"	-	-	-	7	7	-	-
15'-9"	-	-	-	-	-	28	29
14'-0"	-	<2>	<10>	4	4	16 <3>	12
11'-0"	-	-	-	3	3	-	-
10'-6"	-	-	<9>	-	-	14	2
10'-0"	-	<2>	-	-	-	-	-
9'-0"	-	<3>	-	-	-	-	-
8'-9"	-	-	<6>	-	-	-	-

WALL FACE SUPPLIED	7,728 SQ FT <896> SQ FT
WALL BACKFILL*	4,780 CY <469> CY
BACKING MATS (2'-0" HIGH)	441 EA <58> EA
BACKING MATS (3'-0" HIGH)	18 EA
CONSTRUCTION GEOTEXTILE (2'-6" WIDE)	4,024 LF <464> LF
HOG RINGS	10,900 EA <1,400> EA
PLIERS	5 EA <2> EA

**NOTES**  
 ALL STEEL TO BE GALVANIZED EXCEPT AS INDICATED  
 < > INDICATES BLACK STEEL (NON-GALVANIZED) AND ITEMS RELATED TO NON-GALVANIZED WALLS  
 \* NEAT, TOP MAT TO BOTTOM MAT

THE DESIGN CONTAINED ON THESE DRAWINGS IS BASED ON INFORMATION PROVIDED BY THE OWNER. ON THE BASIS OF THIS INFORMATION, THE HILFIKER COMPANY HAS DESIGNED, AND IS RESPONSIBLE FOR THE INTERNAL STABILITY OF THE STRUCTURE ONLY. EXTERNAL STABILITY, INCLUDING FOUNDATION AND SLOPE STABILITY, IS THE RESPONSIBILITY OF THE OWNER.

**E.R.S.**  
**HILFIKER RETAINING WALLS**  
 P.O. BOX 2012 EUREKA, CALIFORNIA 95502-2012  
 PHONE: (707) 443-5093 FAX: (707) 443-2891

812 W. Wabasha Eureka, CA 95501 FAX (707) 441-8557

DSGN	K/JM	DR	JSD	CHK	APVD	NO.	DATE	REVISION	BY
							3/11/08	REVISE 3-SIDED STRUCTURE	K/JM
							2/04/08	BOTTOM OF WALL REVISIONS	K/JM
							9/21/07	REVIEW COMMENT REVISIONS	K/JM

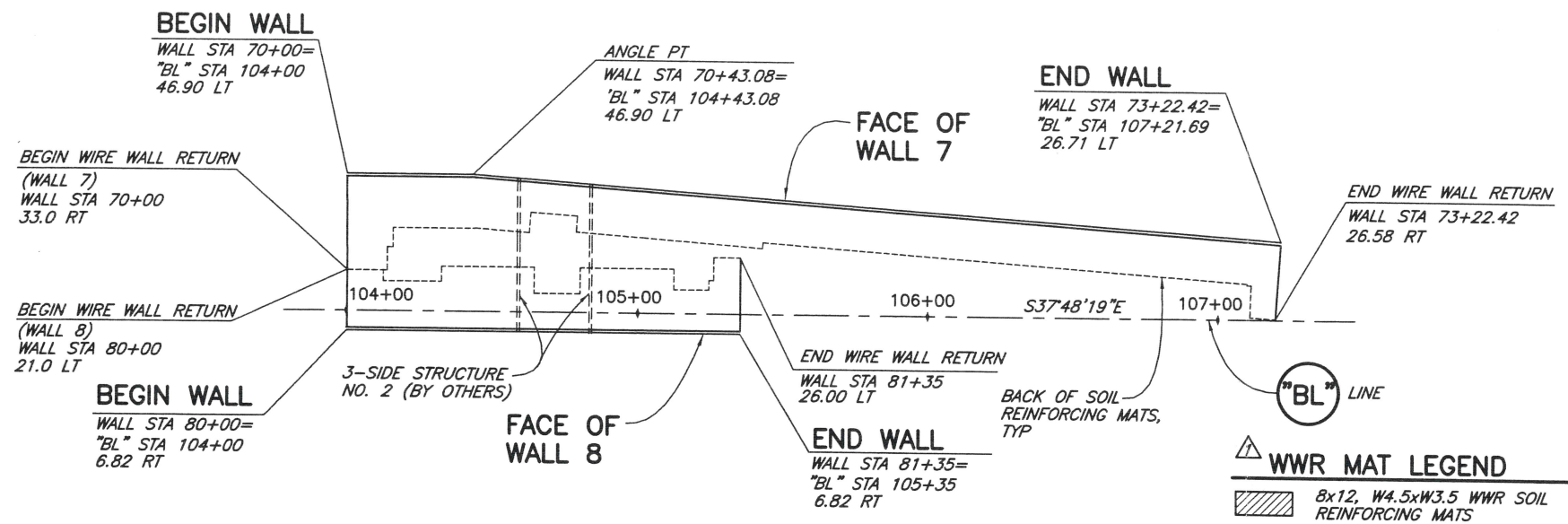
RUSH ROAD TO 13TH STREET SCARSELLA BROS. INC. LEWIS COUNTY, WASHINGTON

**ELEVATION AND MATERIAL LIST**

SHEET **8** OF 16  
 DATE 8/24/07  
 PROJ. NO. 007002.080



CAD: I:\2007\007002-HILFIKER\007002-080-RUSHROAD\SHH\007002-080-WALLS7-8.DWG  
(HW 070530 CE)

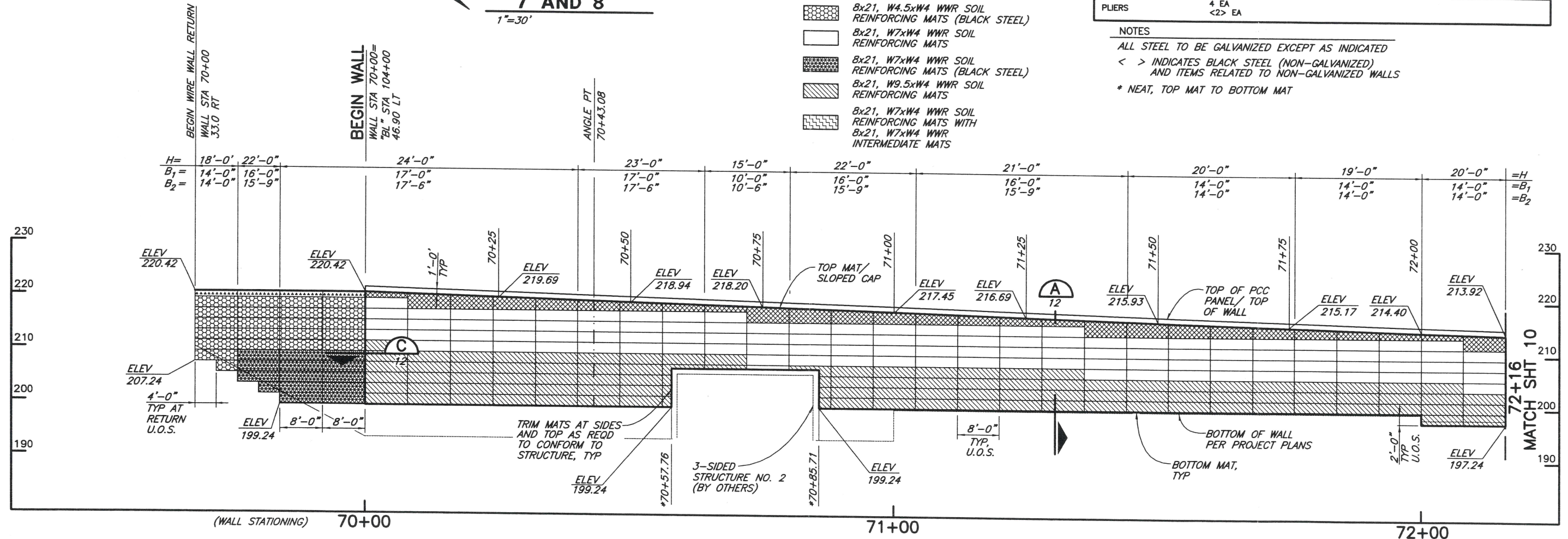


**MATERIAL LIST- WALL 7**

BASE DEPTH	CAP MAT W4.5xW3.5	PRONGLESS MAT W4.5xW3.5	STANDARD MAT W4.5xW4	CAP MAT W7xW3.5	PRONGLESS MAT W7xW3.5	STANDARD MAT W7xW4	STANDARD MAT W9.5xW4
17'-6"	-	-	-	-	-	-	-
17'-0"	<2>	<2>	<10>	8	8	32	<10> 40
16'-0"	<1>	<1>	-	8	8	-	-
15'-9"	-	-	<5>	-	-	32	<4> 29
14'-0"	<1>	<1>	<6>	22	22	86	34
12'-3"	-	-	-	-	-	-	4
12'-0"	-	-	-	1	1	-	2
10'-6"	-	-	<5>	-	-	-	8
10'-0"	<1>	<1>	-	2	2	-	-
9'-0"	<2>	<2>	-	-	-	-	-
8'-9"	-	-	<3>	-	-	-	-
WALL FACE SUPPLIED		5,488 SQ FT <800> SQ FT					
WALL BACKFILL*		2,793 CY <442> CY					
BACKING MATS (2'-0" HIGH)		297 EA <54> EA					
BACKING MATS (3'-0" HIGH)		21 EA					
CONSTRUCTION GEOTEXTILE (2'-6" WIDE)		2,872 LF <432> LF					
HOG RINGS		7,500 EA <1,200> EA					
PLIERS		4 EA <2> EA					

- WWR MAT LEGEND**
- 8x12, W4.5xW3.5 WWR SOIL REINFORCING MATS
  - 8x12, W4.5xW3.5 WWR SOIL REINFORCING MATS (BLACK STEEL)
  - 8x12, W7xW3.5 WWR SOIL REINFORCING MATS
  - 8x21, W4.5xW4 WWR SOIL REINFORCING MATS (BLACK STEEL)
  - 8x21, W7xW4 WWR SOIL REINFORCING MATS
  - 8x21, W7xW4 WWR SOIL REINFORCING MATS (BLACK STEEL)
  - 8x21, W9.5xW4 WWR SOIL REINFORCING MATS
  - 8x21, W7xW4 WWR SOIL REINFORCING MATS WITH INTERMEDIATE MATS

**NOTES**  
 ALL STEEL TO BE GALVANIZED EXCEPT AS INDICATED  
 < > INDICATES BLACK STEEL (NON-GALVANIZED) AND ITEMS RELATED TO NON-GALVANIZED WALLS  
 \* NEAT, TOP MAT TO BOTTOM MAT



**DEVELOPED ELEVATION- WALL 7 (BACKFACE)**

1"=10' HORIZ AND VERT  
 U.O.S.= UNLESS OTHERWISE STATED

\*LOCATED FROM FIELD SURVEY INFORMATION PROVIDED BY CONTRACTOR

THE DESIGN CONTAINED ON THESE DRAWINGS IS BASED ON INFORMATION PROVIDED BY THE OWNER. ON THE BASIS OF THIS INFORMATION, THE HILFIKER COMPANY HAS DESIGNED, AND IS RESPONSIBLE FOR THE INTERNAL STABILITY OF THE STRUCTURE ONLY. EXTERNAL STABILITY, INCLUDING FOUNDATION AND SLOPE STABILITY, IS THE RESPONSIBILITY OF THE OWNER.

**HILFIKER RETAINING WALLS**  
 P.O. BOX 2012 EUREKA, CALIFORNIA 95502-2012  
 PHONE: (707) 443-5093 FAX: (707) 443-2891

E.R.S.

VERIFY SCALES  
 BAR IS ONE INCH ON ORIGINAL DRAWING  
 THIS SHEET SHALL BE IN ACCORDANCE WITH THE SCALES INDICATED ON THIS SHEET. IN ALL OTHER CASES, SCALES SHALL BE AS SHOWN ON THIS SHEET. IN ALL OTHER CASES, SCALES SHALL BE AS SHOWN ON THIS SHEET.

**CONSULTING ENGINEERS & GEOLOGISTS, INC.**  
 812 W. Wabash Eureka, CA 95501 FAX (707) 441-8855 (707) 441-8855

**SHH**

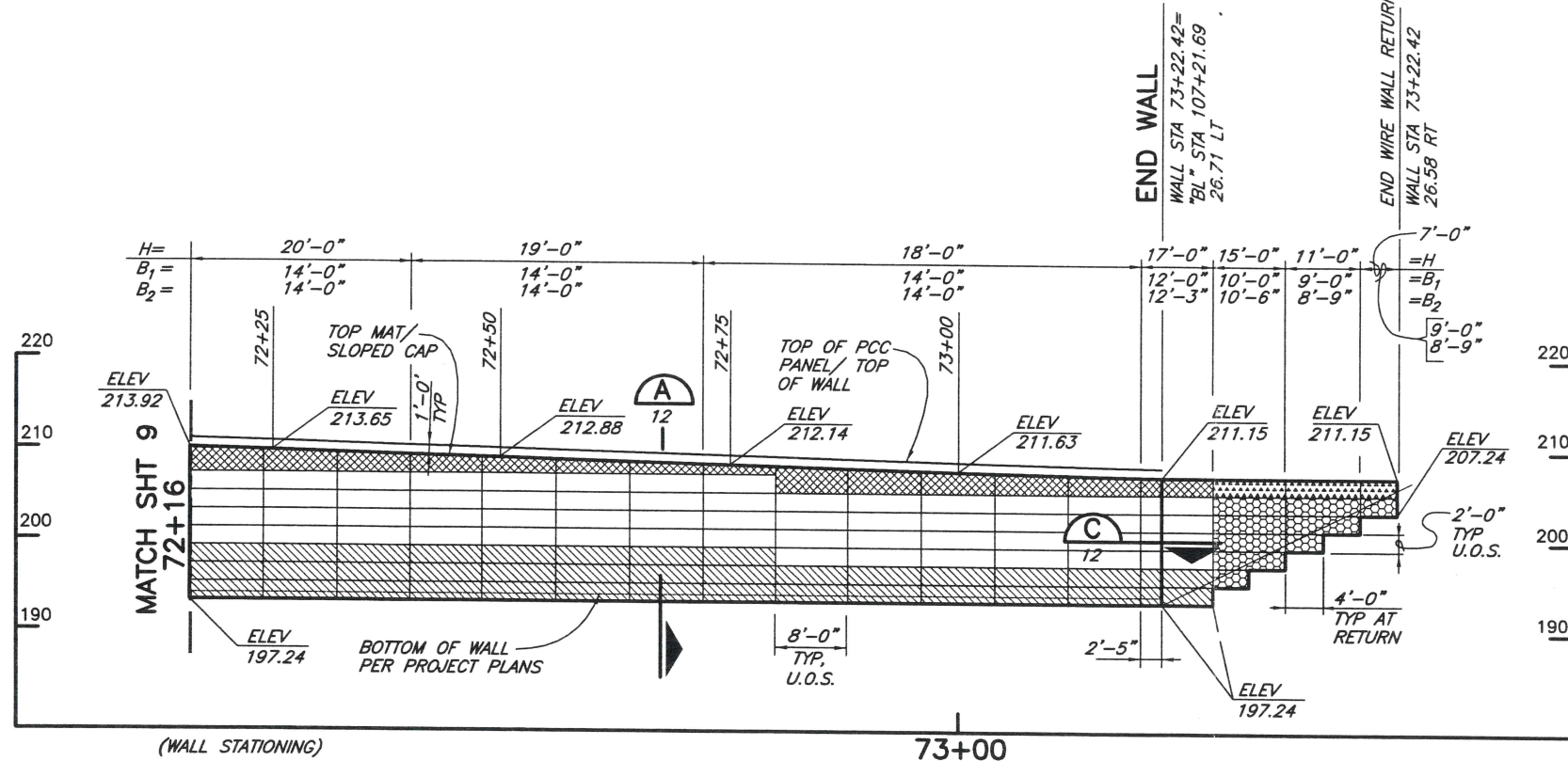
DATE	REVISION	BY
3/11/08	REVISE 3-SIDED STRUCTURE	K/JN
2/04/08	BOTTOM OF WALL REVISIONS	K/JN
9/21/07	REVIEW COMMENT REVISIONS	K/JN

DSGN: K/JN  
 DR: JSO  
 CHK: JSO  
 APVD: JSO

RUSH ROAD TO 13TH STREET  
 SCARSELLA BROS. INC.  
 LEWIS COUNTY, WASHINGTON

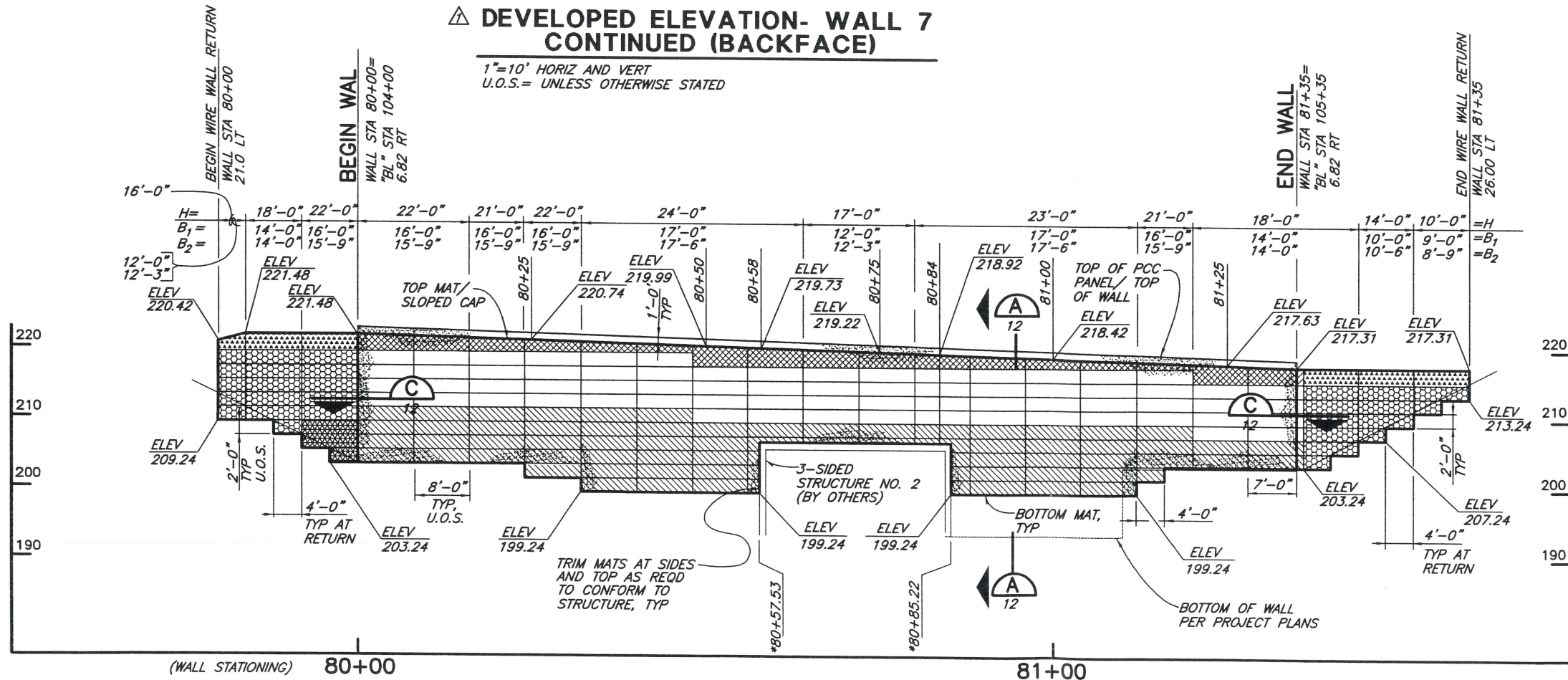
**PLANS, ELEVATION AND MATERIAL LIST**

SHEET 9 OF 16  
 DATE 8/24/07  
 PROJ. NO. 007002.080



**△ DEVELOPED ELEVATION- WALL 7 CONTINUED (BACKFACE)**

1"=10' HORIZ AND VERT  
U.O.S.= UNLESS OTHERWISE STATED



**△ △ △ DEVELOPED ELEVATION- WALL 8**

1"=10' HORIZ AND VERT  
U.O.S.= UNLESS OTHERWISE STATED

**△ △ MATERIAL LIST- WALL 8**

BASE DEPTH	CAP MAT W4.5xW3.5	PRONGLESS MAT W4.5xW3.5	STANDARD MAT W4.5xW4	CAP MAT W7xW3.5	PRONGLESS MAT W7xW3.5	STANDARD MAT W7xW4	STANDARD MAT W9.5xW4
17'-6"	-	-	-	-	-	32	39
17'-0"	-	-	-	8	8	-	-
16'-0"	<1>	<1>	-	5	5	-	-
15'-9"	-	-	<5>	-	-	20	<3>
14'-0"	<2>	<2>	<11>	2	2	8	21
12'-3"	-	-	<2>	-	-	8	-
12'-0"	<1>	<1>	<4>	2	2	-	-
10'-6"	-	-	<4>	-	-	-	-
10'-0"	<1>	<1>	-	-	-	-	-
9'-0"	<1>	<1>	-	-	-	-	-
8'-9"	-	-	<1>	-	-	-	-

WALL FACE SUPPLIED	2,648 SQ FT <512> SQ FT
WALL BACKFILL*	1,464 CY <255> CY
BACKING MATS (2'-0" HIGH)	151 EA <36> EA
BACKING MATS (3'-0" HIGH)	8 EA
CONSTRUCTION GEOTEXTILE (2'-6" WIDE)	1,408 LF <288> LF
HOG RINGS	3,700 EA <800> EA
PLIERS	3 EA <1> EA

NOTES  
ALL STEEL TO BE GALVANIZED EXCEPT AS INDICATED  
< > INDICATES BLACK STEEL (NON-GALVANIZED) AND ITEMS RELATED TO NON-GALVANIZED WALLS  
\* NEAT, TOP MAT TO BOTTOM MAT

**△ WWR MAT LEGEND**

- 8x12, W4.5xW3.5 WWR SOIL REINFORCING MATS
- 8x12, W4.5xW3.5 WWR SOIL REINFORCING MATS (BLACK STEEL)
- 8x12, W7xW3.5 WWR SOIL REINFORCING MATS
- 8x21, W4.5xW4 WWR SOIL REINFORCING MATS (BLACK STEEL)
- 8x21, W7xW4 WWR SOIL REINFORCING MATS
- 8x21, W7xW4 WWR SOIL REINFORCING MATS (BLACK STEEL)
- 8x21, W9.5xW4 WWR SOIL REINFORCING MATS
- 8x21, W7xW4 WWR SOIL REINFORCING MATS WITH 8x21, W7xW4 WWR INTERMEDIATE MATS

CAD: I:\2007\007002-HILFIKER\007002-080-RUSHROAD\SHN\007002-080-WALLS7-B.DWG (HRW 070530 CE)

THE DESIGN CONTAINED ON THESE DRAWINGS IS BASED ON INFORMATION PROVIDED BY THE OWNER. ON THE BASIS OF THIS INFORMATION, THE HILFIKER COMPANY HAS DESIGNED, AND IS RESPONSIBLE FOR THE INTERNAL STABILITY OF THE STRUCTURE ONLY. EXTERNAL STABILITY, INCLUDING FOUNDATION AND SLOPE STABILITY, IS THE RESPONSIBILITY OF THE OWNER.

**E.R.S.**  
**HILFIKER RETAINING WALLS**  
P.O. BOX 2012 EUREKA, CALIFORNIA 95502-2012  
PHONE: (707) 443-5093 FAX: (707) 443-2891

VERIFY SCALES  
BAR IS ONE INCH ON ORIGINAL DRAWING  
THIS SET INCLUDES ALL SHEETS AND ACCESSORIES  
SCALE ACCORDINGLY

**CONSULTING ENGINEERS & GEOLOGISTS, INC.**  
812 W. Wabash  
Eureka, CA 95501  
TEL: (707) 441-8855  
FAX: (707) 441-8877

**SM**

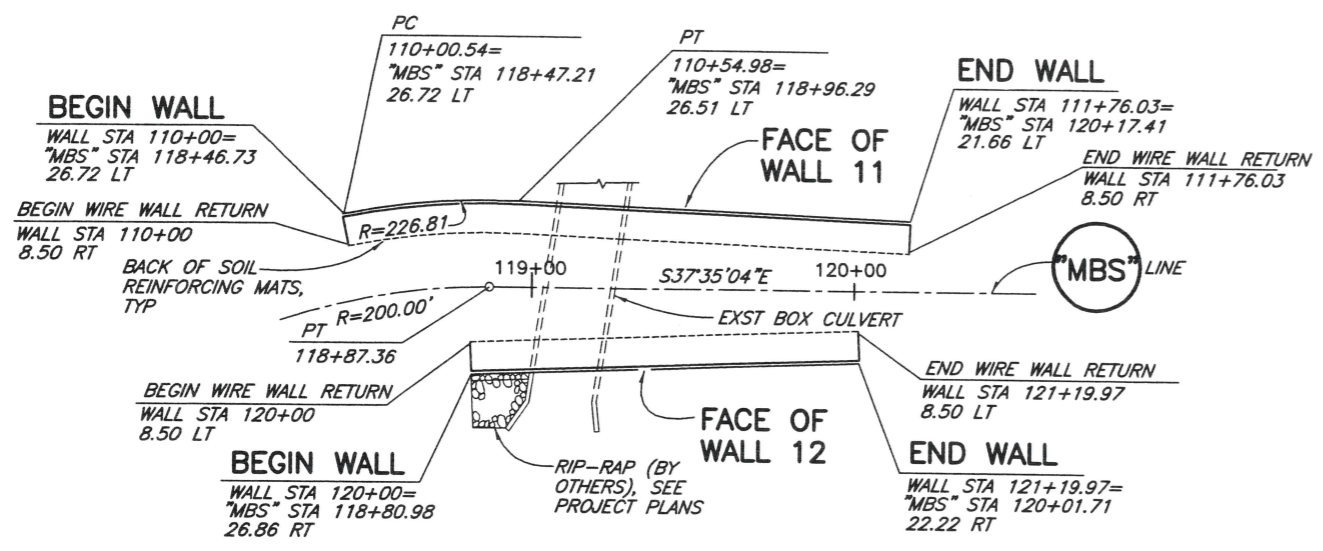
NO.	DATE	REVISION	BY
3	3/11/08	REVISE 3-SIDED STRUCTURE BOTTOM OF WALL	K/JM
2	2/04/08	REVISIONS	K/JM
1	9/21/07	REVIEW COMMENT	K/JM

RUSH ROAD TO 13TH STREET  
SCARSELLA BROS. INC.  
LEWIS COUNTY, WASHINGTON

**ELEVATIONS AND MATERIAL LIST**

SHEET **10** OF 16  
DATE **8/24/07**  
PROJ. NO. **007002.080**

CAD: I:\2007\1007002-HILFIKER\007002-080-RUSHROAD\SHW\007002-080-WALLS-11-12.DWG (HRW 070530 CE)



**PLAN- WALLS 11 AND 12**  
1"=30'

**MATERIAL LIST- WALL 11**

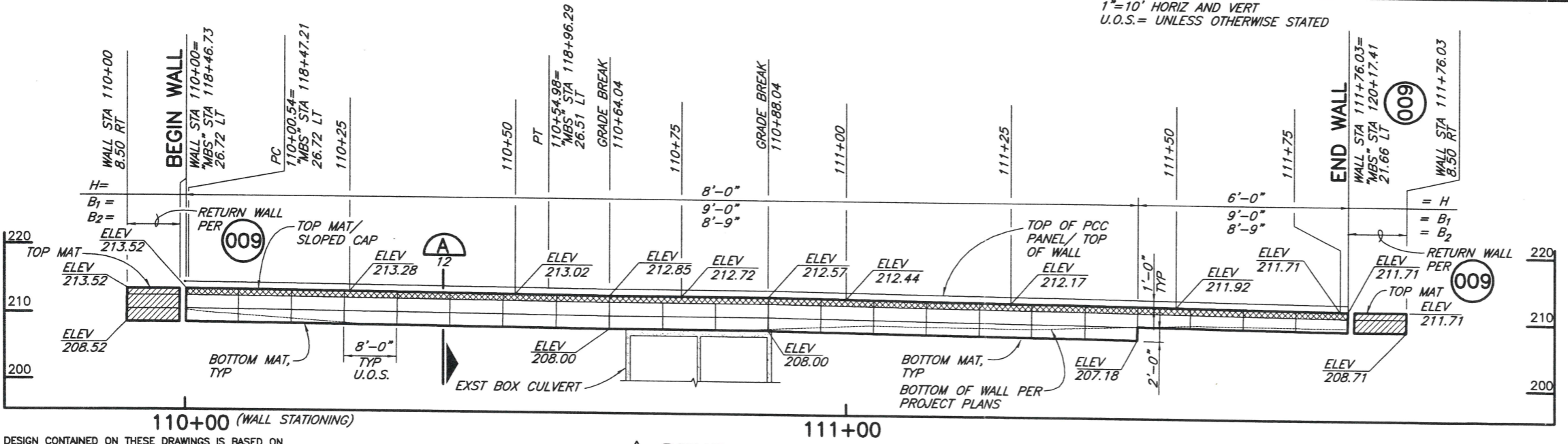
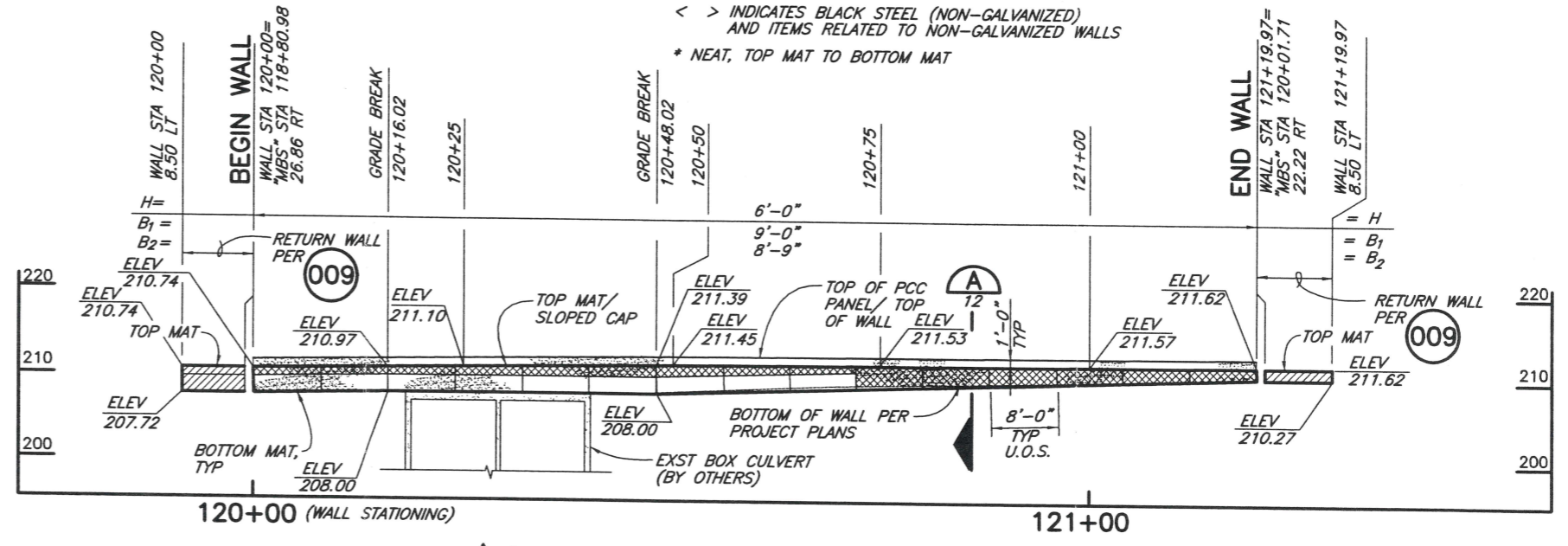
BASE DEPTH	CAP MAT W4.5xW3.5	PRONGLESS MAT W4.5xW3.5	STANDARD MAT W4.5xW4	CAP MAT W7xW3.5	PRONGLESS MAT W7xW3.5	STANDARD MAT W7xW4
9'-0"	2	2	-	22	22	-
8'-9"	-	-	-	-	-	-
5'-0"	-	-	3	-	-	40
WALL FACE SUPPLIED		1,072 SQ FT				
WALL BACKFILL*		507 CY				
BACKING MATS (2'-0" HIGH)		70 EA				
CONSTRUCTION GEOTEXTILE (2'-6" WIDE)		560 LF				
HOG RINGS		1,700 EA				
PLIERS		2 EA				

**MATERIAL LIST- WALL 12**

BASE DEPTH	CAP MAT W4.5xW3.5	PRONGLESS MAT W4.5xW3.5	STANDARD MAT W4.5xW4	CAP MAT W7xW3.5	PRONGLESS MAT W7xW3.5	STANDARD MAT W7xW4
9'-0"	2	2	-	15	15	-
8'-9"	-	-	-	-	-	-
5'-0"	-	-	1	-	-	9
WALL FACE SUPPLIED		456 SQ FT				
WALL BACKFILL*		192 CY				
BACKING MATS (2'-0" HIGH)		25 EA				
BACKING MATS (3'-0" HIGH)		3 EA				
CONSTRUCTION GEOTEXTILE (2'-6" WIDE)		232 LF <440> LF				
HOG RINGS		700 EA				
PLIERS		1 EA				

**NOTES**  
ALL STEEL TO BE GALVANIZED EXCEPT AS INDICATED  
< > INDICATES BLACK STEEL (NON-GALVANIZED) AND ITEMS RELATED TO NON-GALVANIZED WALLS  
\* NEAT, TOP MAT TO BOTTOM MAT

- WWR MAT LEGEND**
- 8x12, W4.5xW3.5 WWR SOIL REINFORCING MATS
  - 8x12, W4.5xW3.5 WWR SOIL REINFORCING MATS (BLACK STEEL)
  - 8x12, W7xW3.5 WWR SOIL REINFORCING MATS
  - 8x21, W4.5xW4 WWR SOIL REINFORCING MATS (BLACK STEEL)
  - 8x21, W7xW4 WWR SOIL REINFORCING MATS
  - 8x21, W7xW4 WWR SOIL REINFORCING MATS (BLACK STEEL)
  - 8x21, W9.5xW4 WWR SOIL REINFORCING MATS



THE DESIGN CONTAINED ON THESE DRAWINGS IS BASED ON INFORMATION PROVIDED BY THE OWNER. ON THE BASIS OF THIS INFORMATION, THE HILFIKER COMPANY HAS DESIGNED, AND IS RESPONSIBLE FOR THE INTERNAL STABILITY OF THE STRUCTURE ONLY. EXTERNAL STABILITY, INCLUDING FOUNDATION AND SLOPE STABILITY, IS THE RESPONSIBILITY OF THE OWNER.

**E.R.S. HILFIKER RETAINING WALLS**  
P.O. BOX 2012 EUREKA, CALIFORNIA 95502-2012  
PHONE: (707) 443-5093 FAX: (707) 443-2891

VERIFY SCALES  
BAR IS ONE INCH ON ORIGINAL DRAWING  
0 = ONE INCH ON THIS DRAWING  
SCALES ACCORDINGLY

**CONSULTING ENGINEERS & GEOLOGISTS, INC.**  
812 W. Wabash Eureka, CA 95501 FAX (707) 441-8877

**SHW**

NO.	DATE	REVISION	COMMENT	BY	K/J/V

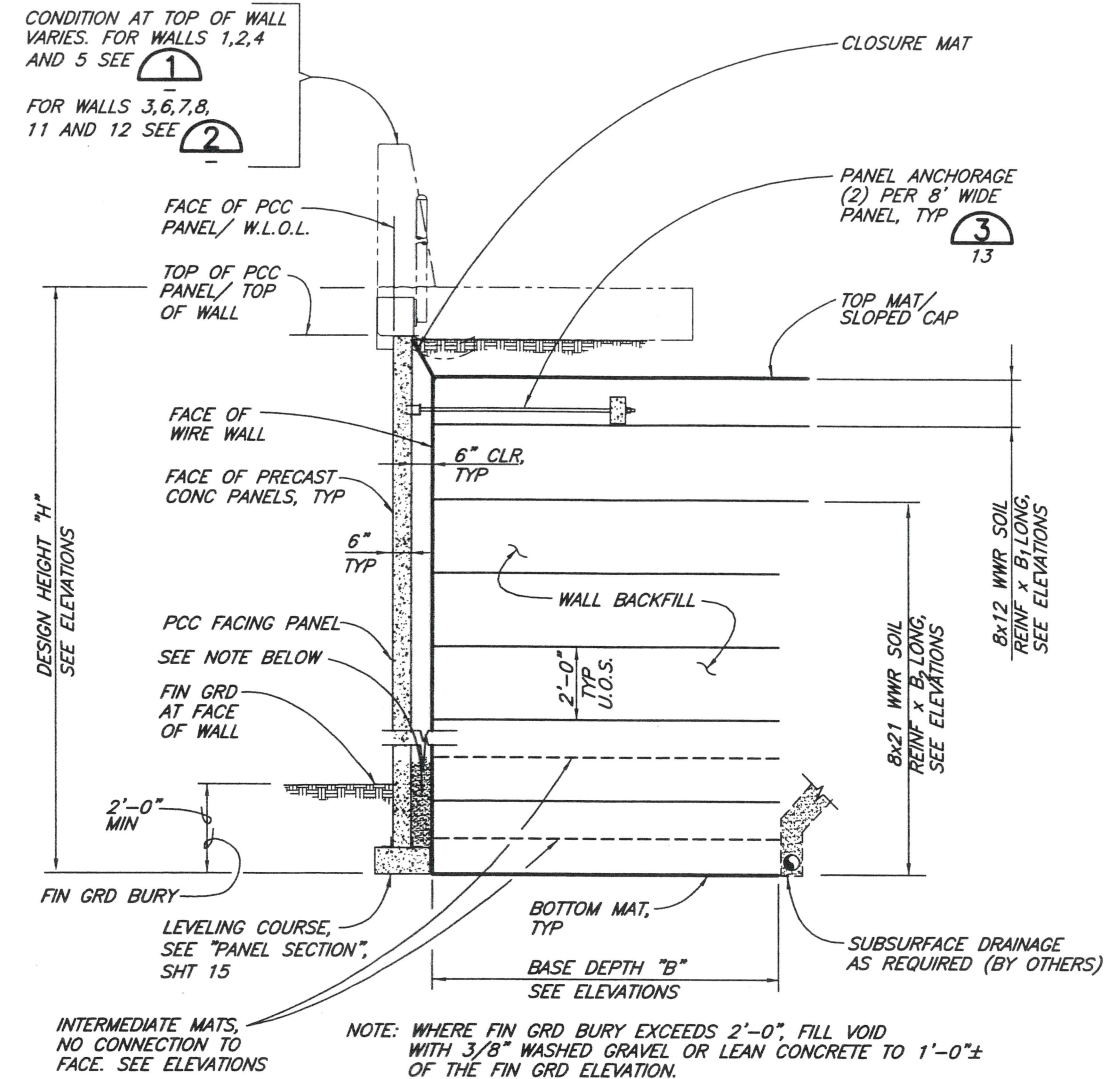
DR JSD  
CHK  
APVD

RUSH ROAD TO 13TH STREET  
SCARSELLA BROS. INC.  
LEWIS COUNTY, WASHINGTON

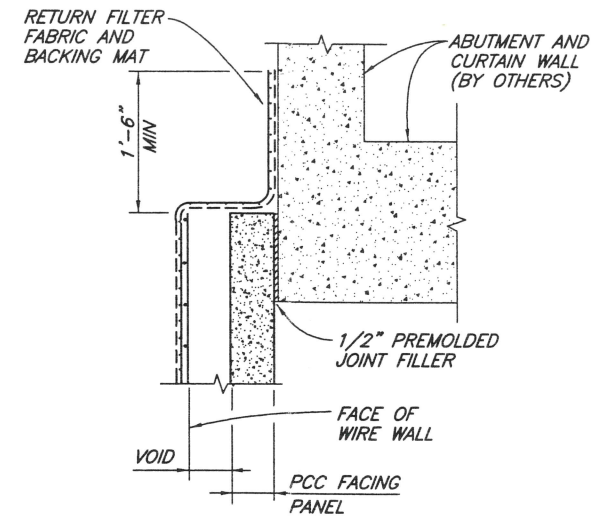
**PLANS, ELEVATIONS AND MATERIAL LISTS**

SHEET 11 OF 16  
DATE 8/24/07  
PROJ. NO. 007002.080

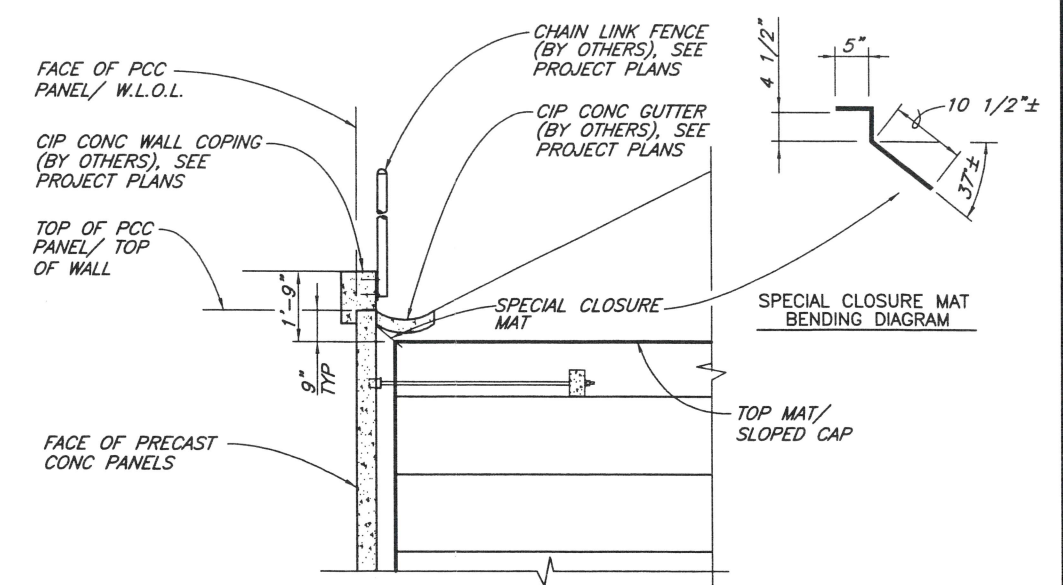
CAD: I:\2007\007002-HILFIKER\007002-080-RUSHROAD\SHW\007002-080-DETS-SECTS.DWG (HW 070530 CE)



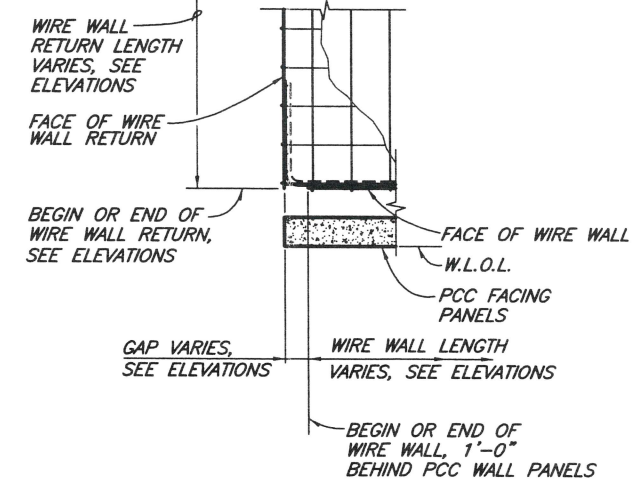
**SECTION A**  
NO SCALE 1,2,3,5,6,7,8,9,10,11&15



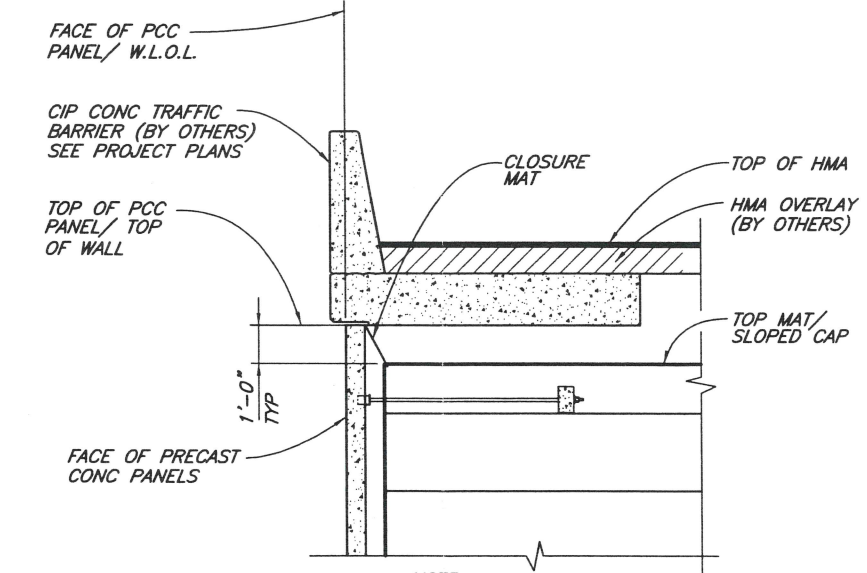
**SECTION B**  
NO SCALE 1,2,5&6



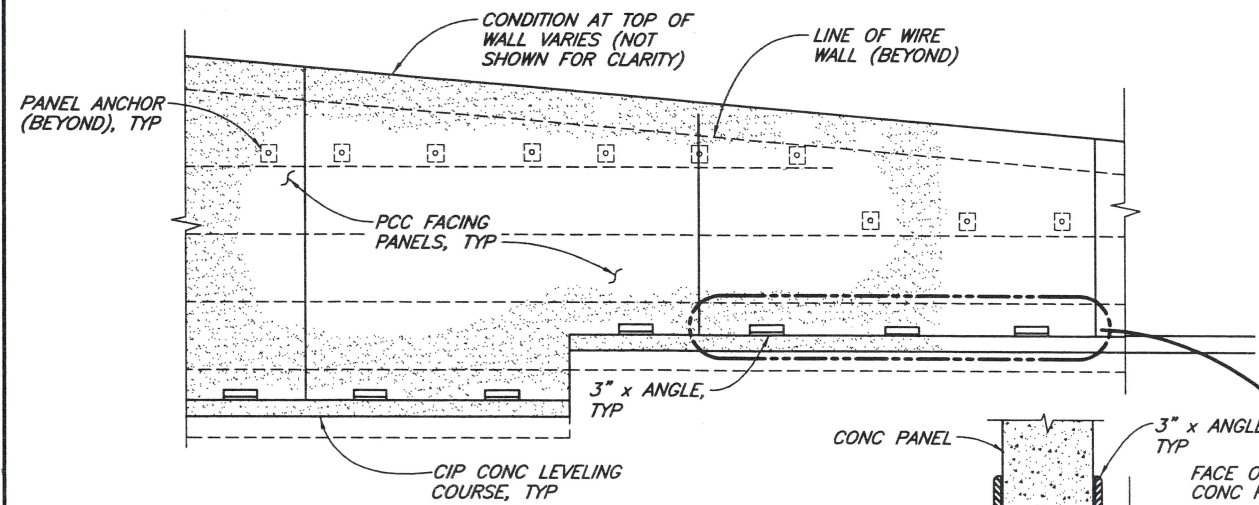
NOTE: FOR REMAINDER NOT SHOWN OR NOTED SEE **DETAIL 1**  
NO SCALE



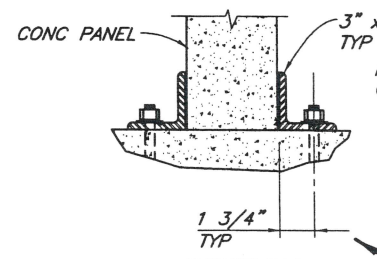
**SECTION C**  
NO SCALE 2,3,7,8,9&10



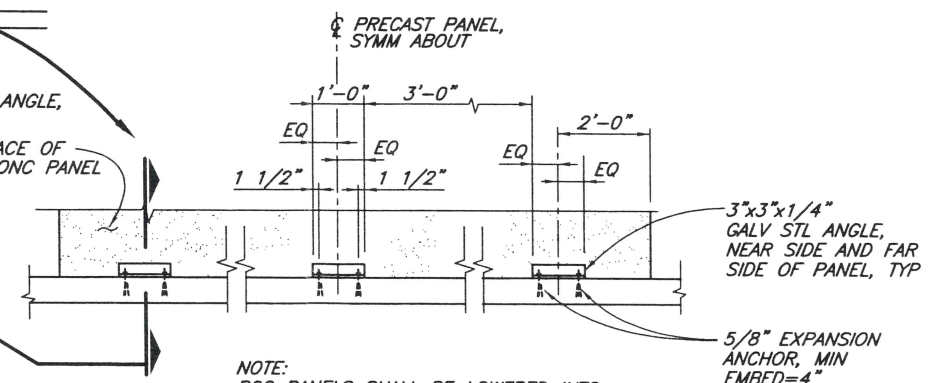
NOTE: FOR REMAINDER NOT SHOWN OR NOTED SEE **DETAIL 2**  
NO SCALE



**ELEVATION**



**SECTION**



NOTE: PCC PANELS SHALL BE LOWERED INTO POSITION. DO NOT SWING PANELS INTO ANGLES.

**PCC PANEL CONNECTION DETAIL**  
NO SCALE

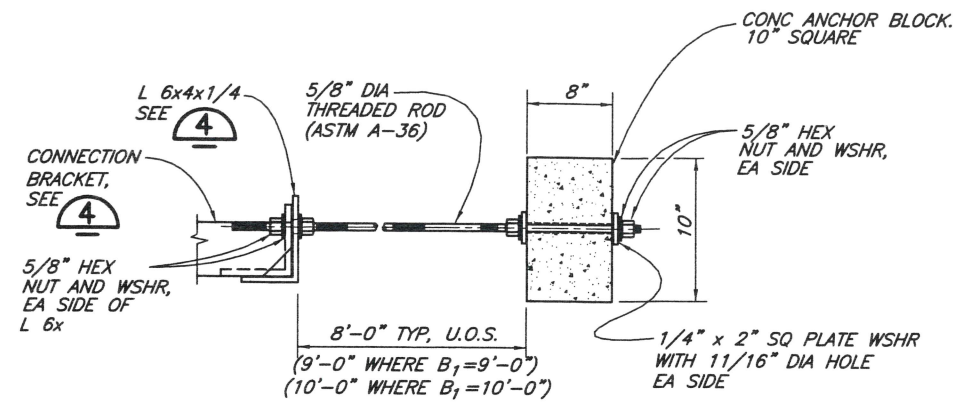
THE DESIGN CONTAINED ON THESE DRAWINGS IS BASED ON INFORMATION PROVIDED BY THE OWNER. ON THE BASIS OF THIS INFORMATION, THE HILFIKER COMPANY HAS DESIGNED, AND IS RESPONSIBLE FOR THE INTERNAL STABILITY OF THE STRUCTURE ONLY. EXTERNAL STABILITY, INCLUDING FOUNDATION AND SLOPE STABILITY, IS THE RESPONSIBILITY OF THE OWNER.



**E.R.S. HILFIKER RETAINING WALLS**  
P.O. BOX 2012 EUREKA, CALIFORNIA 95502-2012  
PHONE: (707) 443-5083 FAX: (707) 443-2891

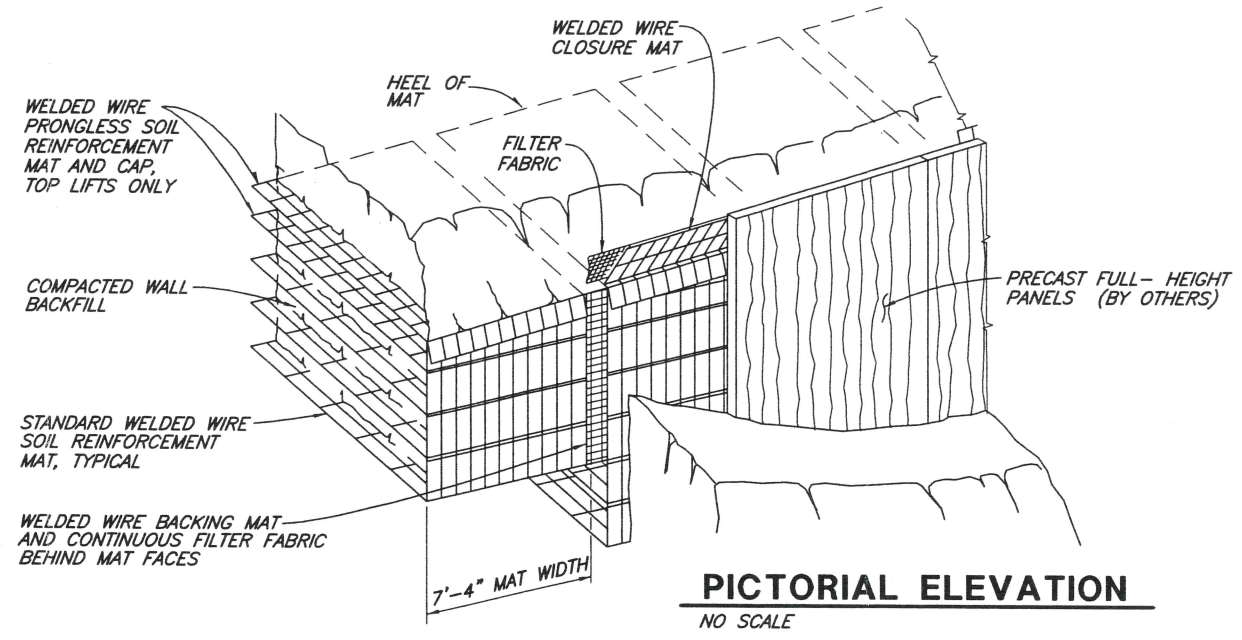
VERIFY SCALES		BAR IS ONE INCH ON ORIGINAL DRAWING		IF NOT ONE INCH ON THIS SHEET ADJUST SCALES ACCORDINGLY	
CONSULTING ENGINEERS & GEOLOGISTS, INC.		912 W. Webster Eureka, CA 95501		FAX (707) 441-8855 (707) 441-8877	
<b>SECTION AND DETAILS</b>		RUSH ROAD TO 13TH STREET SCARBELLA BROS. INC. LEWIS COUNTY, WASHINGTON		SHEET 12 OF 16	
DATE	NO.	REVISION	TOP OF COPING DIMENSION	REVIEW COMMENT	REVISIONS
3/11/08	1				
2/04/08	2				
9/21/07	3				
DESIGN	K/JN	BY			
DR	J50				
CHK					
APVD					
DATE 8/24/07		PROJ. NO. 007002.080			

CAD: I:\2007\007002-HILFIKER\007002.080-RUSHROAD\SHW\007002-080-DETS-SECTS.DWG  
(HRW 070530 CE)

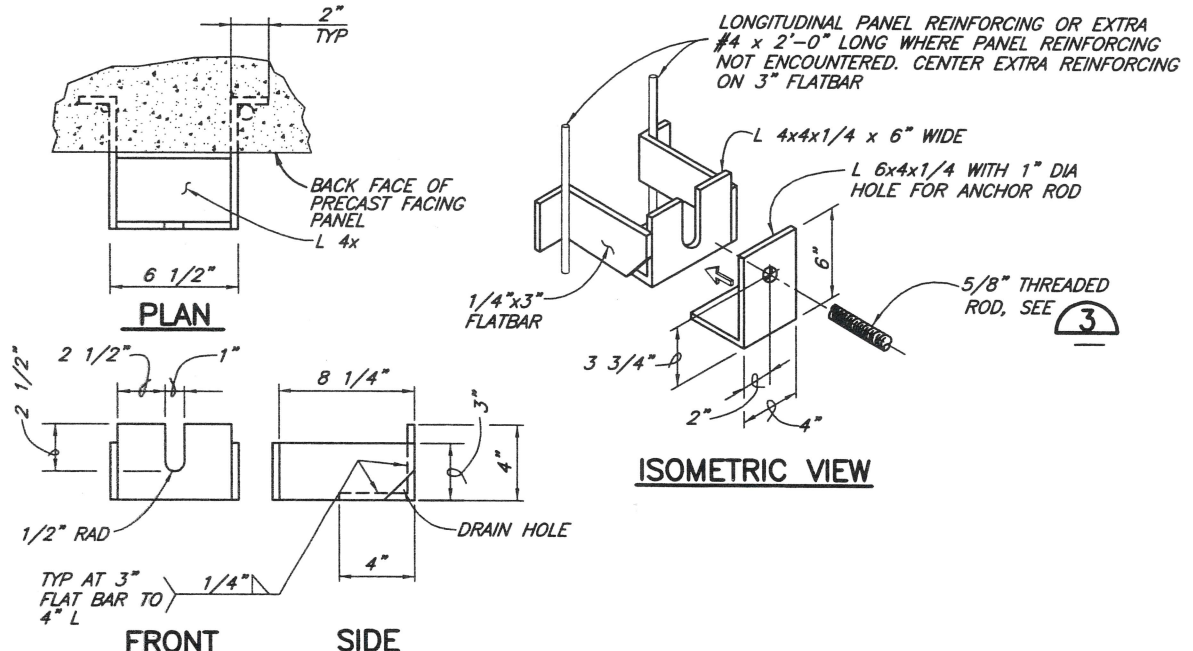


THREADED RODS, NUTS AND WASHERS SHALL BE HOT-DIP GALVANIZED AFTER FABRICATION (2 OZ/SQ FT MIN)

**DETAIL 3**  
NO SCALE 12,13&15

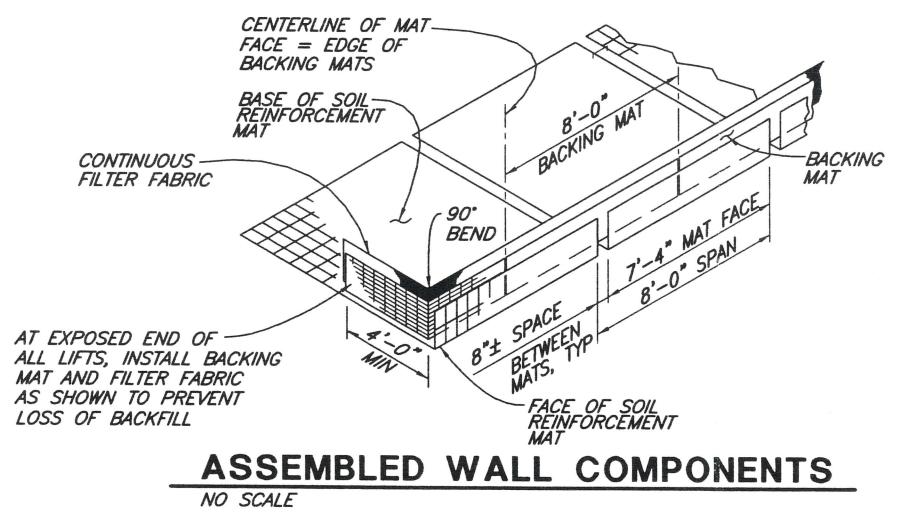


**PICTORIAL ELEVATION**  
NO SCALE

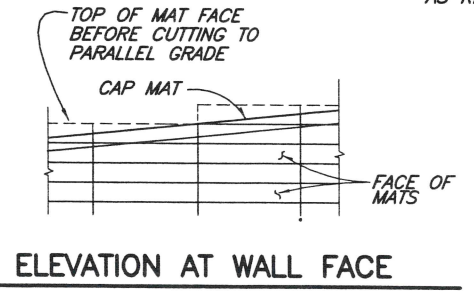


CONNECTION BRACKET ASSEMBLIES SHALL BE HOT-DIP GALVANIZED AFTER FABRICATION (2 OZ/SQ FT MIN)

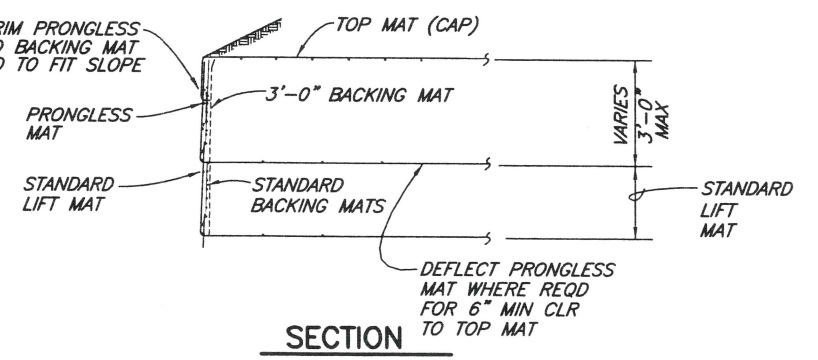
**DETAIL 4**  
NO SCALE 13&15



**ASSEMBLED WALL COMPONENTS**  
NO SCALE



**ELEVATION AT WALL FACE**



**SECTION**

**INSTALLATION SEQUENCE**

1. PLACE THE PRONGLESS MATS AND BACKING MATS FOR THE TOP LIFTS.
2. CUT THE PRONGLESS AND BACKING MAT FACES OFF PARALLEL TO THE SLOPE OF THE FINAL GRADE.
3. PLACE AND COMPACT THE BACKFILL IN THE TOP LIFTS TO PARALLEL THE FINAL GRADE SLOPE.
4. PLACE THE CAPS ON THE BACKFILL AND CLIP THEM TO THE PRONGLESS MAT FACES WITH HOG RINGS.
5. PLACE AND COMPACT THE FINAL COVER OVER THE CAP MATS.

**SLOPED CAP DETAILS**  
NO SCALE

VERIFY SCALES  
BASE IS ONE INCH ON ORIGINAL DRAWING  
IF NOT ONE INCH ON THIS SHEET, ADJUST SCALES ACCORDINGLY

CONSULTING ENGINEERS & GEOLOGISTS, INC.  
812 W. Wabasha Eureka, CA 95501  
(707)441-8855  
(707)441-8877

**SHW**

NO.	DATE	REVISION	BY	K/JM
1	9/21/07	REVIEW COMMENT		

DSR: K/JM  
DR: JSD  
CHK: JSD  
APPD: JSD

RUSH ROAD TO 13TH STREET  
SCARSELLA BROS. INC.  
LEWIS COUNTY, WASHINGTON

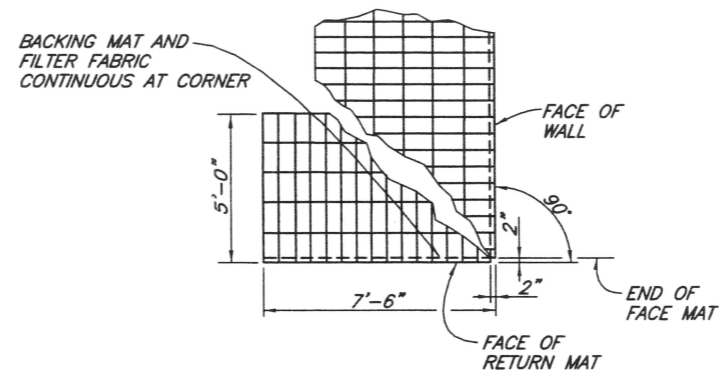
**DETAILS**

E.R.S.  
**HILFIKER RETAINING WALLS**  
P.O. BOX 2012 EUREKA, CALIFORNIA 95502-2012  
PHONE: (707) 443-5093 FAX: (707) 443-2891

SHEET 13 OF 16  
DATE 8/24/07  
PROJ. NO. 007002.080

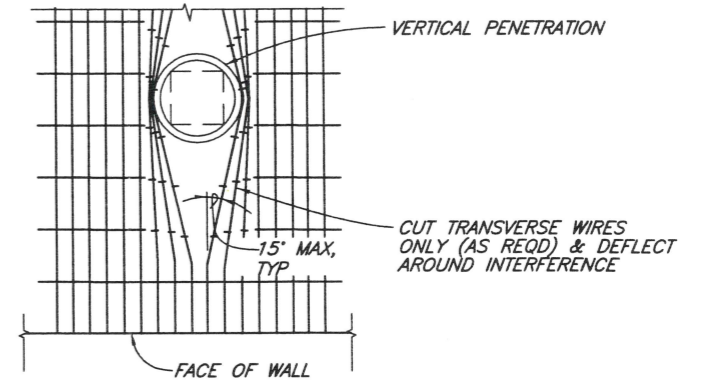
THE DESIGN CONTAINED ON THESE DRAWINGS IS BASED ON INFORMATION PROVIDED BY THE OWNER. ON THE BASIS OF THIS INFORMATION, THE HILFIKER COMPANY HAS DESIGNED, AND IS RESPONSIBLE FOR THE INTERNAL STABILITY OF THE STRUCTURE ONLY. EXTERNAL STABILITY, INCLUDING FOUNDATION AND SLOPE STABILITY, IS THE RESPONSIBILITY OF THE OWNER.

CAD: I:\2007\007002-HILFIKER\007002.080-RUSHROAD\SHH\007002-080-DETS-SECTS.DWG  
(HRW 070530 CE)

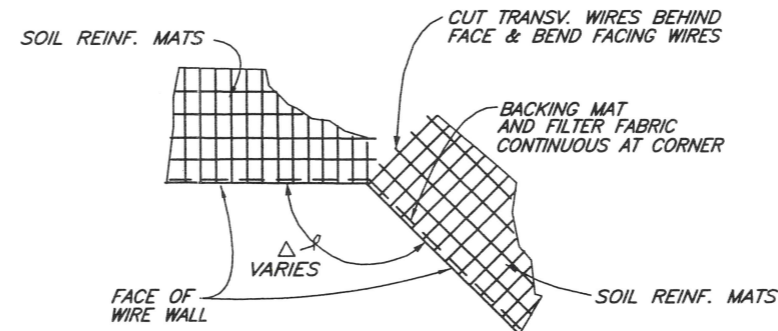


NOTE: ALL RETURN MATS TO BE 6X12, W4.5XW3.5

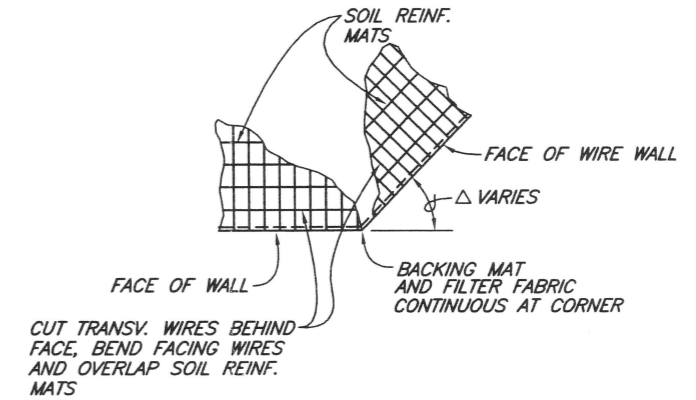
**END OF WALL RETURN** 009  
NO SCALE



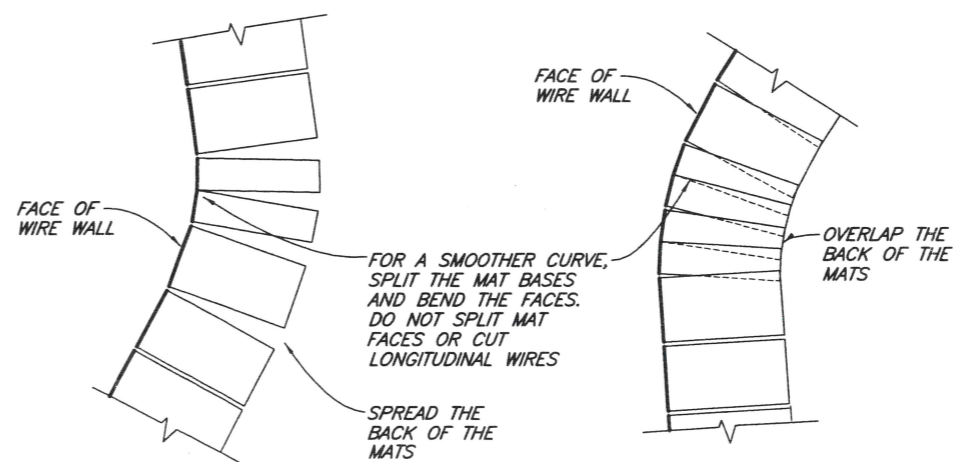
**SOIL REINF. PENETRATION** 033  
NO SCALE



**CONCAVE ANGLE POINT** 045  
NO SCALE



**CONVEX ANGLE POINT** 046  
NO SCALE



**PLAN AT CONCAVE CONDITION**

**PLAN AT CONVEX CONDITION**

**MAT INSTALLATION ON CURVES**

THE DESIGN CONTAINED ON THESE DRAWINGS IS BASED ON INFORMATION PROVIDED BY THE OWNER. ON THE BASIS OF THIS INFORMATION, THE HILFIKER COMPANY HAS DESIGNED, AND IS RESPONSIBLE FOR THE INTERNAL STABILITY OF THE STRUCTURE ONLY. EXTERNAL STABILITY, INCLUDING FOUNDATION AND SLOPE STABILITY, IS THE RESPONSIBILITY OF THE OWNER.



E.R.S.  
**HILFIKER RETAINING WALLS**  
P.O. BOX 2012 EUREKA, CALIFORNIA 95502-2012  
PHONE: (707) 443-5093 FAX: (707) 443-2891

VERIFY SCALES  
BAR IS ONE INCH ON ORIGINAL DRAWING  
IF NOT ONE INCH ON THIS SHEET, ADJUST SCALES ACCORDINGLY

CONSULTING ENGINEERS & GEOLOGISTS, INC.  
812 W. Wabasha  
Eureka, CA 95501 FAX (707)441-8677

**SN**

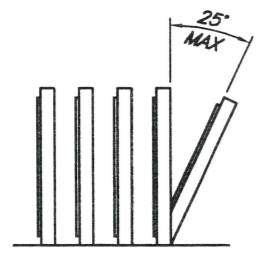
DESIGN	KJM	BY	
DR	JSD	REVISION	
CHK		NO.	
APVD		DATE	

MISCELLANEOUS DETAILS

RUSH ROAD TO 13TH STREET  
SCARSELLA BROS. INC.  
LEWIS COUNTY, WASHINGTON

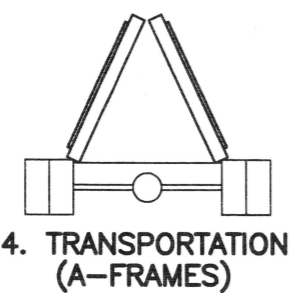
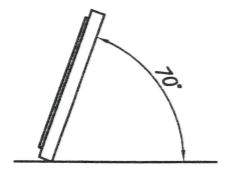
SHEET 14 OF 16  
DATE 8/24/07  
PROJ. NO. 007002.080

**1. CASTING FLAT**



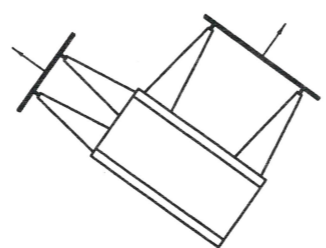
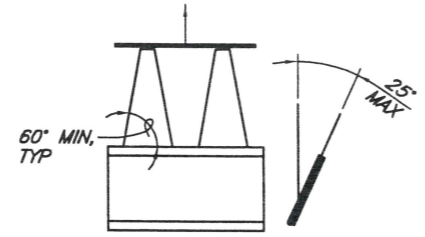
**3. STORAGE**

**2. STRIPPING (TILT BEDS)**  
PANEL MUST BE TILTED ON LONGITUDINAL EDGE ONLY



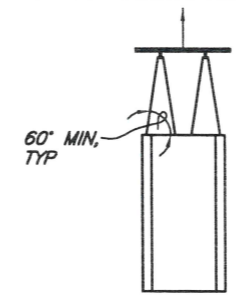
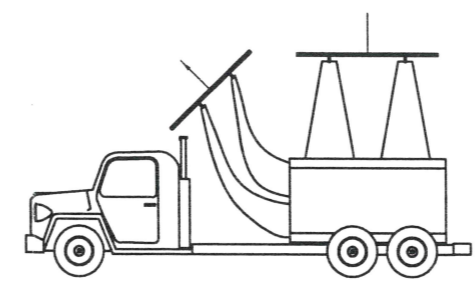
**4. TRANSPORTATION (A-FRAMES)**

**1. TEMPORARY STORAGE**



**3. ROTATE TO VERTICAL IN AIR**

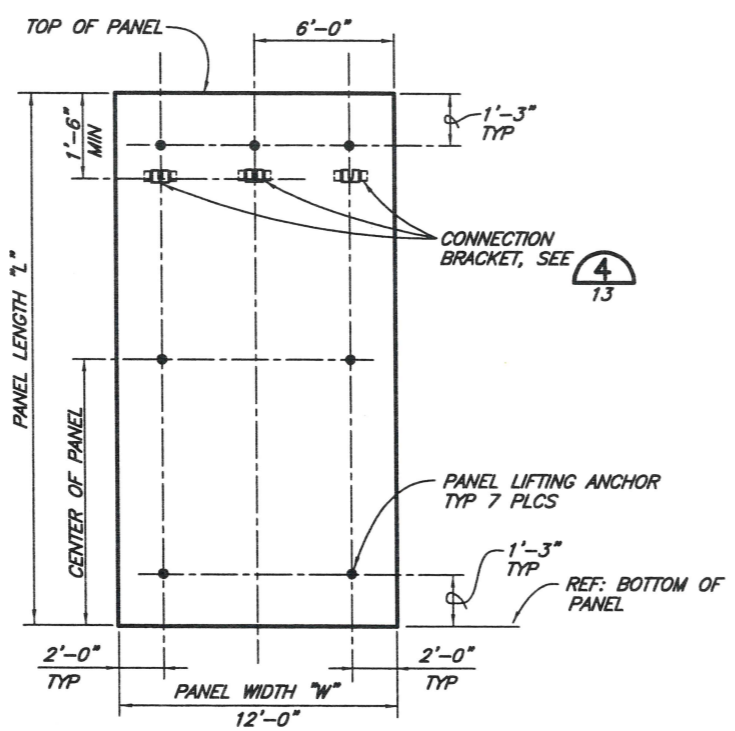
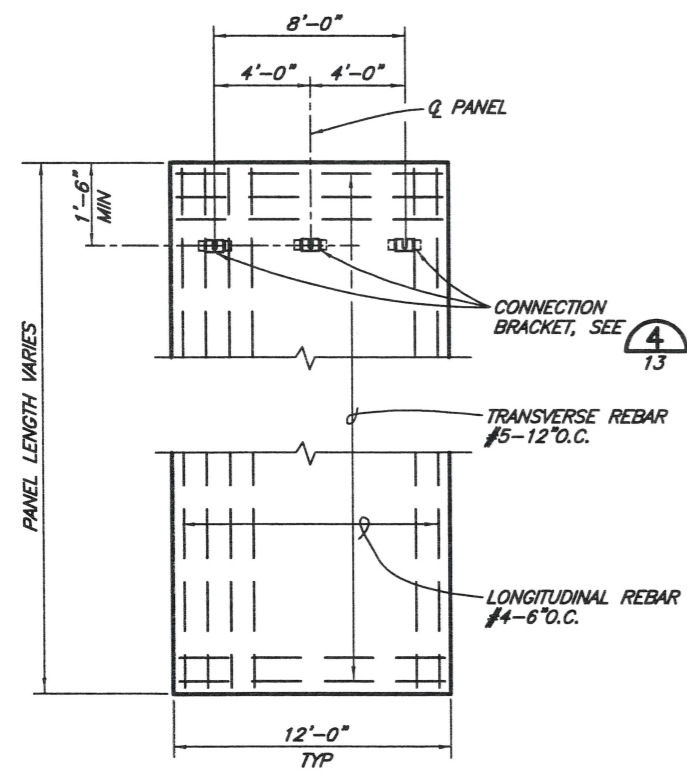
**2. RIGGING TO REMOVE FROM TRUCK**



**4. ERECT POSITION**

**PANEL HANDLING AND INSTALLATION**

NO SCALE

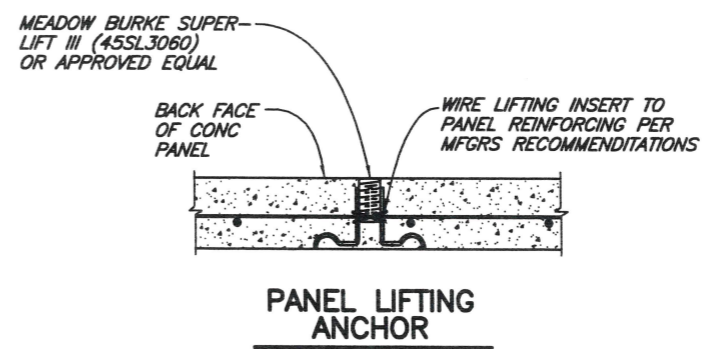


**NOTES:**

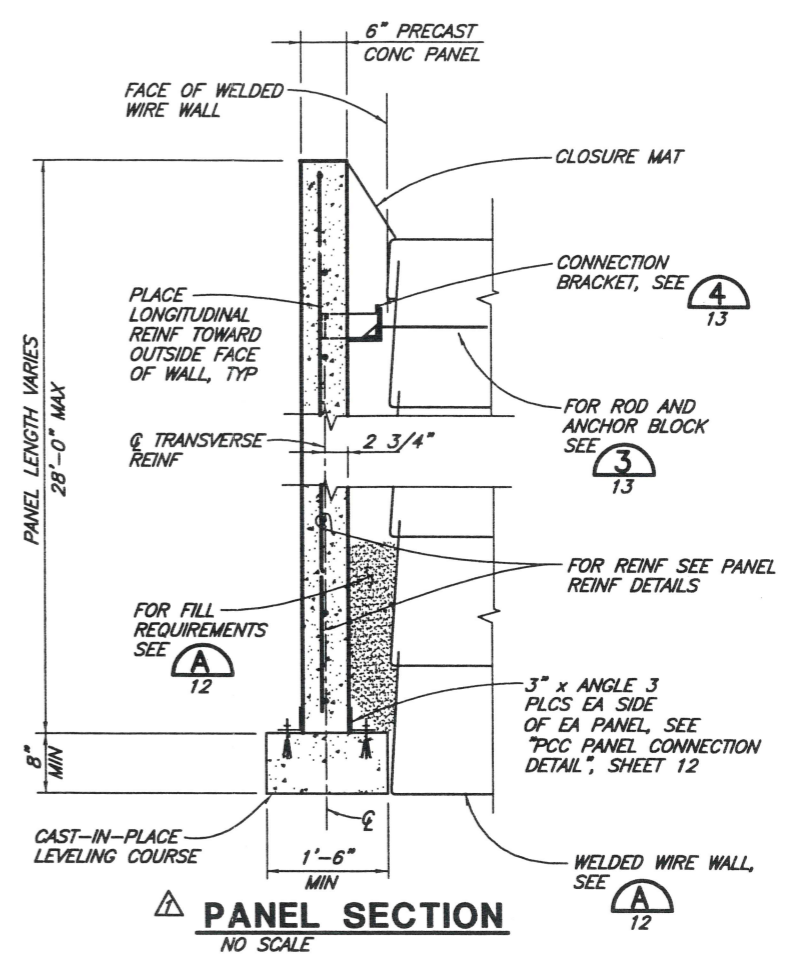
1. BACK FACE OF PANELS SHOWN
2. PANELS SHALL BE CONSTRUCTED OF 4,000 PSI CONC MIX. REINFORCING STEEL SHALL BE GRADE 60.
3. PANELS MAY BE REMOVED FROM FORMS USING A 6 POINT LIFT AFTER CONCRETE HAS REACHED A MIN COMPRESSIVE STRENGTH OF 3,000 PSI

**PRECAST CONC WALL PANEL REINFORCING DETAILS**

NO SCALE



**PANEL LIFTING ANCHOR**



**PANEL SECTION**

NO SCALE

CAD: I:\2007\007002-HILFIKER\007002-080-RUSHROAD\SHW\007002-080-DETS-SECTS.DWG (HRW 070530 CE)

THE DESIGN CONTAINED ON THESE DRAWINGS IS BASED ON INFORMATION PROVIDED BY THE OWNER. ON THE BASIS OF THIS INFORMATION, THE HILFIKER COMPANY HAS DESIGNED, AND IS RESPONSIBLE FOR THE INTERNAL STABILITY OF THE STRUCTURE ONLY. EXTERNAL STABILITY, INCLUDING FOUNDATION AND SLOPE STABILITY, IS THE RESPONSIBILITY OF THE OWNER.



**E.R.S. HILFIKER RETAINING WALLS**  
P.O. BOX 2012 EUREKA, CALIFORNIA 95502-2012  
PHONE: (707) 443-5093 FAX: (707) 443-2891

VERIFY SCALES  
 BAR IS ONE INCH ON ORIGINAL DRAWING  
 IF NOT ONE INCH ON THIS SHEET, ADJUST SCALES ACCORDINGLY

CONSULTING ENGINEERS & GEOLOGISTS, INC.  
 812 W. Webster Eureka, CA 95501 FAX (707) 441-8877

**SCW**

NO.	DATE	REVISION	BY
1	9/21/07	REVIEW COMMENT	KJM

DSRN KJM  
 DR JSO  
 CHK  
 APVD

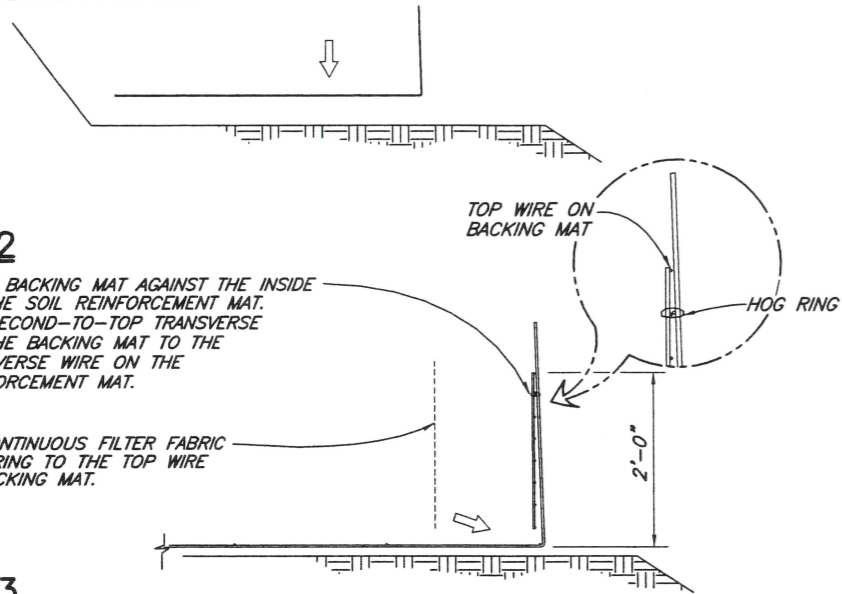
RUSH ROAD TO 13TH STREET  
 SCARSELLA BROS. INC.  
 LEWIS COUNTY, WASHINGTON

**PRECAST PANEL DETAILS**

SHEET 15 OF 16  
 DATE 8/24/07  
 PROJ. NO. 007002.080

**STEP 1**

PLACE THE FIRST COURSE OF SOIL REINFORCEMENT MATS ON PREPARED FOUNDATION.



**STEP 2**

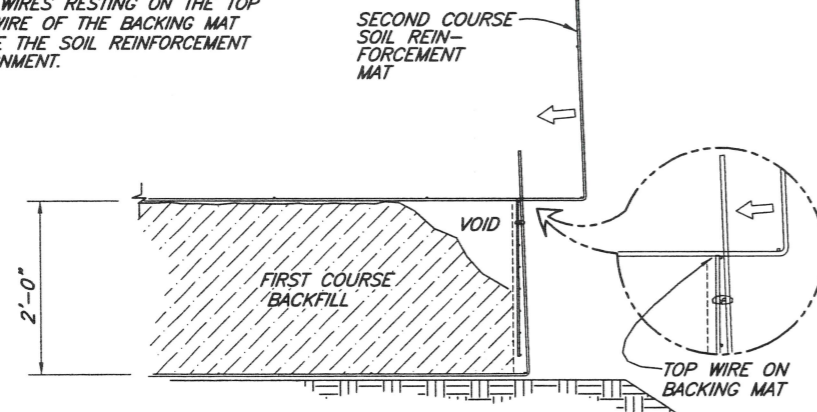
PLACE THE BACKING MAT AGAINST THE INSIDE FACE OF THE SOIL REINFORCEMENT MAT. CLIP THE SECOND-TO-TOP TRANSVERSE WIRE ON THE BACKING MAT TO THE TOP TRANSVERSE WIRE ON THE SOIL REINFORCEMENT MAT.

INSTALL CONTINUOUS FILTER FABRIC AND HOG-RING TO THE TOP WIRE ON THE BACKING MAT.

**STEP 3**

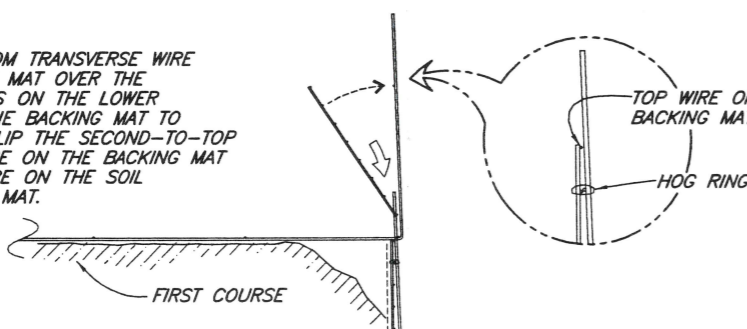
PLACE AND COMPACT THE BACKFILL IN LAYERS AND DENSITIES AS SPECIFIED IN THE PROJECT PLANS. LEAVE A VOID AT THE FACE AS SHOWN.

PLACE THE SECOND COURSE OF SOIL REINFORCEMENT MATS WITH THE BASE LONGITUDINAL WIRES RESTING ON THE TOP TRANSVERSE WIRE OF THE BACKING MAT BELOW. SLIDE THE SOIL REINFORCEMENT MAT INTO ALIGNMENT.



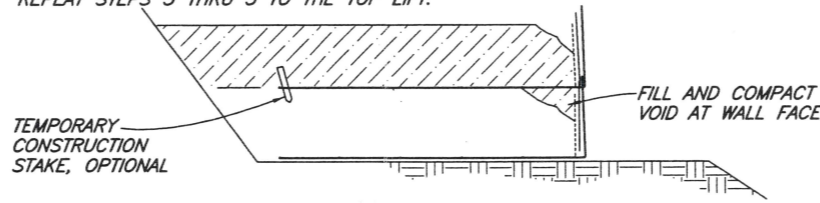
**STEP 4**

HOOK THE BOTTOM TRANSVERSE WIRE OF THE BACKING MAT OVER THE VERTICAL PRONGS ON THE LOWER MAT. ROTATE THE BACKING MAT TO VERTICAL AND CLIP THE SECOND-TO-TOP TRANSVERSE WIRE ON THE BACKING MAT TO THE TOP WIRE ON THE SOIL REINFORCEMENT MAT.



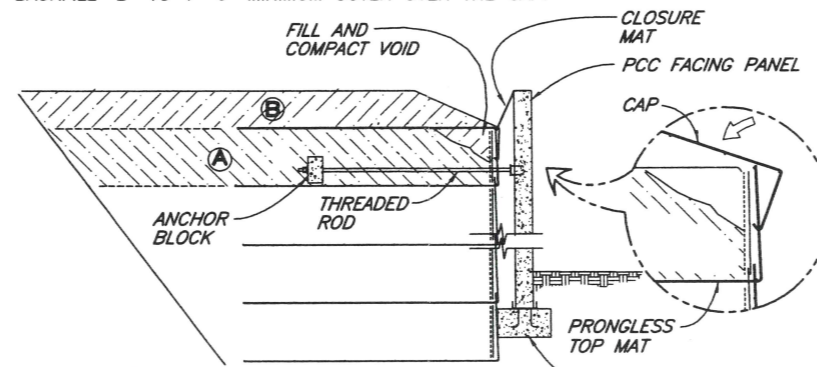
**STEP 5**

INSTALL THE FILTER FABRIC. PLACE AND COMPACT THE BACKFILL TO THE BASE ELEVATION OF THE NEXT MAT. REPEAT STEPS 3 THRU 5 TO THE TOP LIFT.



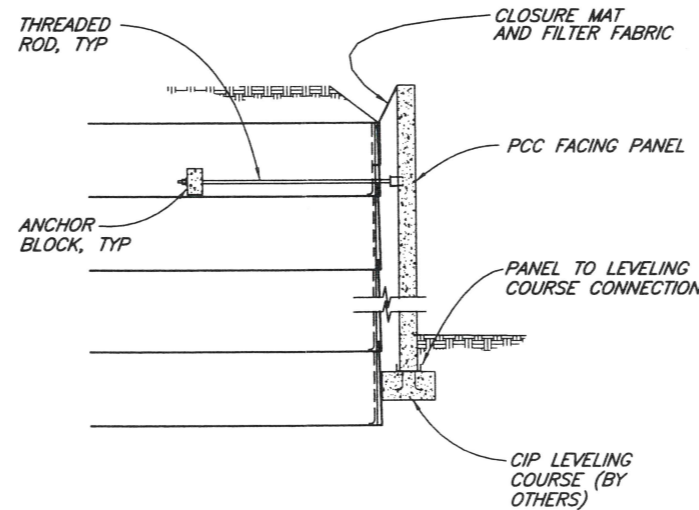
**STEP 6: TOP LIFT**

PLACE THE TOP LIFT PRONGLESS MAT, BACKING MAT AND FILTER FABRIC. INSTALL ANCHOR BLOCKS AND THREADED RODS. PLACE AND COMPACT BACKFILL IN AREA "A" HOOK THE CAP OVER THE MIDDLE TRANSVERSE WIRE ON THE PRONGLESS MAT, AND ROTATE INTO PLACE. PLACE CLOSURE MAT W/BACKING MAT AND FILTER FABRIC BACKFILL "B" TO 1'-6" MINIMUM COVER OVER THE CAP.



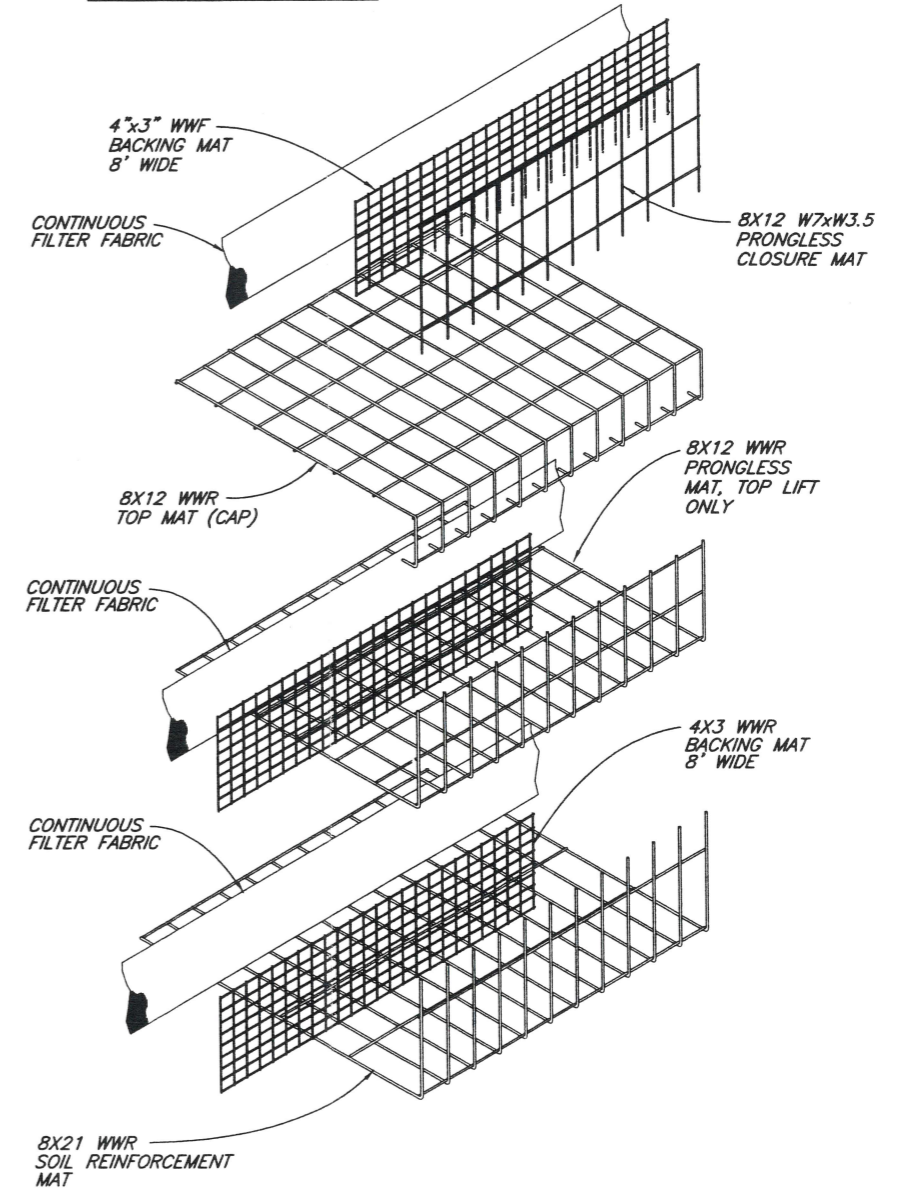
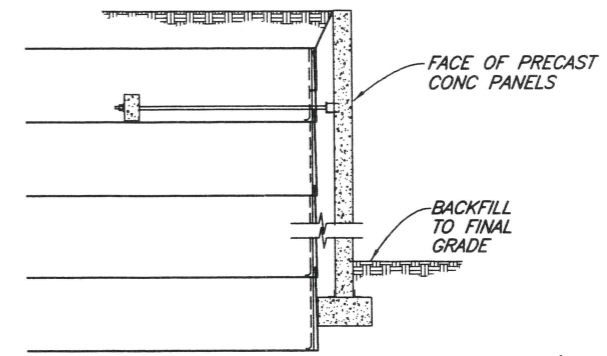
**STEP 7**

POUR LEVELING COURSE TO ELEVATION SHOWN. INSTALL PCC FACING PANELS AND CONNECT TO LEVELING COURSE AND THREADED RODS FROM ANCHOR BLOCKS



**STEP 8**

BACKFILL AT TOE TO FINAL GRADE. PLACE AND COMPACT BACKFILL AT CLOSURE MAT FINISH TOP OF WALL PER PROJECT PLANS.



**CONSTRUCTION SEQUENCE**

NO SCALE

**WALL COMPONENTS**

NO SCALE

CAD: I:\2007\007002-HILFIKER\007002.080-RUSHROAD\SHW\007002-080-DETS-SECTS.DWG (HRW 070530 CE)

THE DESIGN CONTAINED ON THESE DRAWINGS IS BASED ON INFORMATION PROVIDED BY THE OWNER. ON THE BASIS OF THIS INFORMATION, THE HILFIKER COMPANY HAS DESIGNED, AND IS RESPONSIBLE FOR THE INTERNAL STABILITY OF THE STRUCTURE ONLY. EXTERNAL STABILITY, INCLUDING FOUNDATION AND SLOPE STABILITY, IS THE RESPONSIBILITY OF THE OWNER.

**E.R.S. HILFIKER RETAINING WALLS**  
 P.O. BOX 2012 EUREKA, CALIFORNIA 95502-2012  
 PHONE: (707) 443-5093 FAX: (707) 443-2891

VERIFY SCALES  
 BAR IS ONE INCH ON ORIGINAL DRAWING  
 IF NOT ONE INCH ON THIS SHEET, ADJUST SCALES ACCORDINGLY

CONSULTING ENGINEERS & GEOLOGISTS, INC.  
 912 W. Webster Eureka, CA 95501 FAX (707)441-8855 (707)441-8877

**SW**

DSGN	KJM	DR	JSD	CHK	DKK	APVD	NO.	DATE	BY	REVISION
------	-----	----	-----	-----	-----	------	-----	------	----	----------

RUSH ROAD TO 13TH STREET  
 SCARSELLA BROS. INC.  
 LEWIS COUNTY, WASHINGTON

**WALL COMPONENTS AND CONSTRUCTION SEQUENCE**

SHEET 16 OF 16  
 DATE 8/24/07  
 PROJ. NO. 007002.080