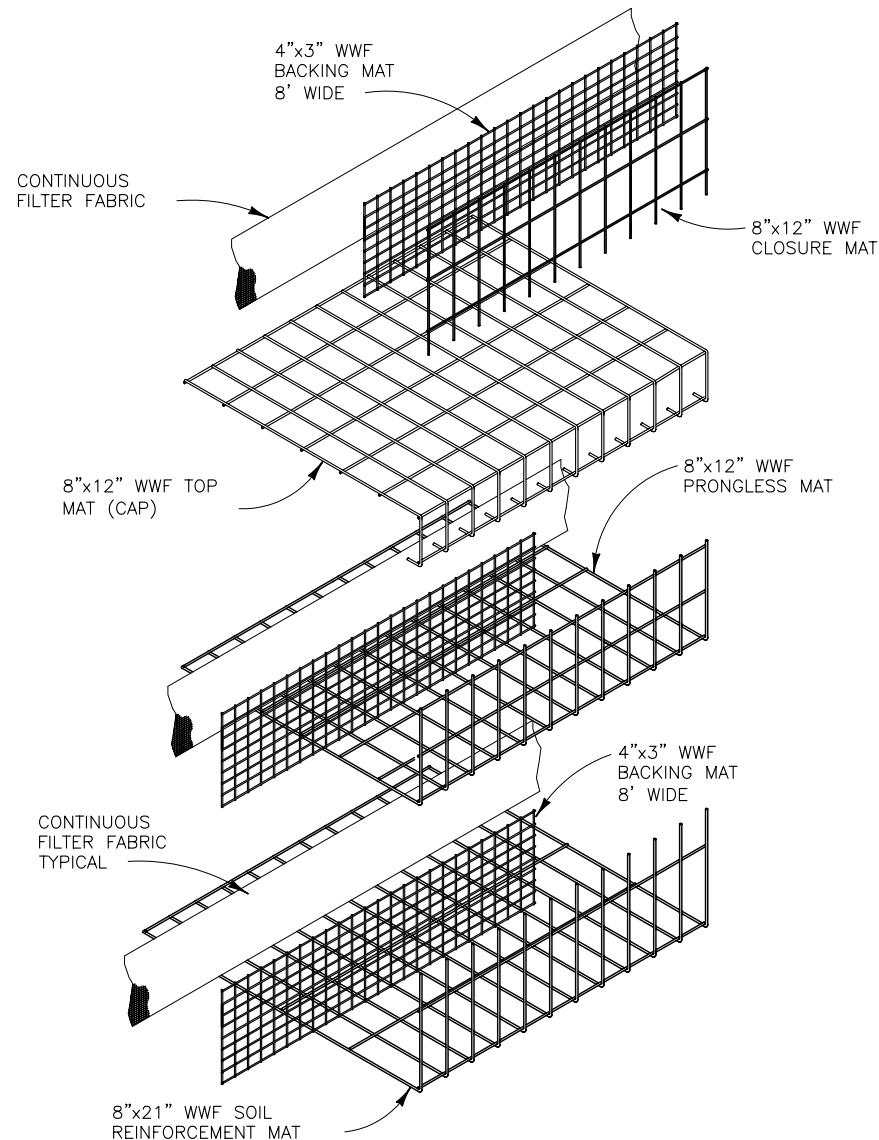
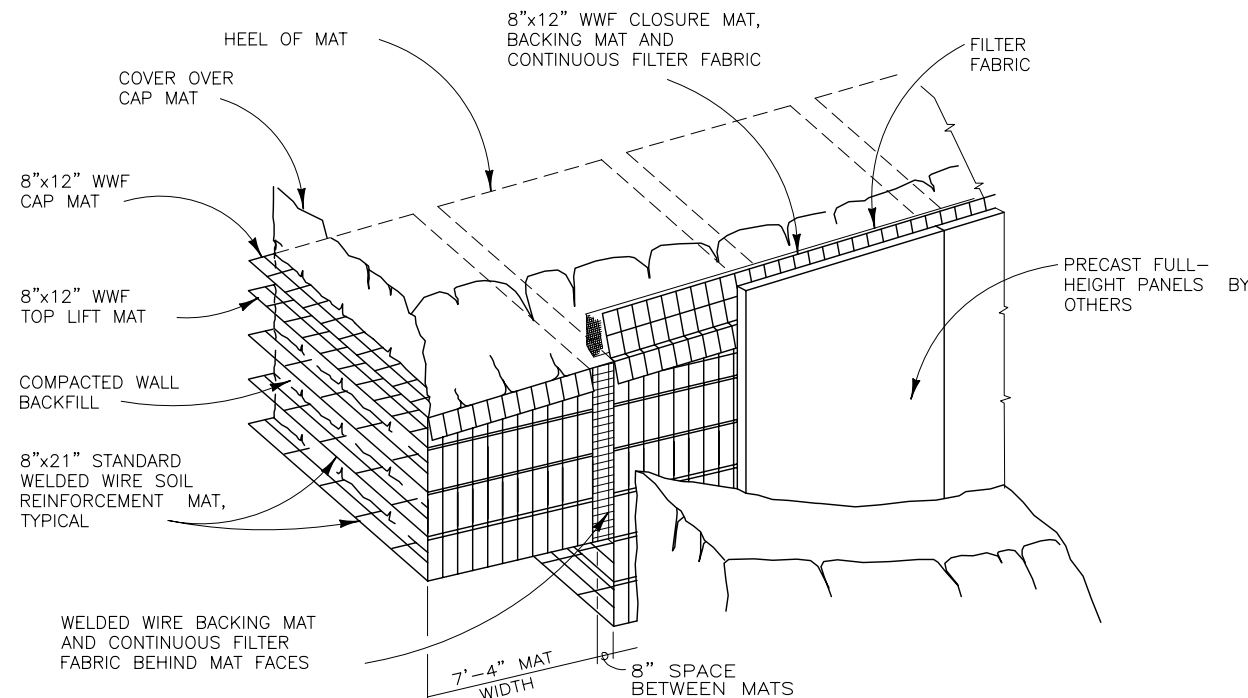


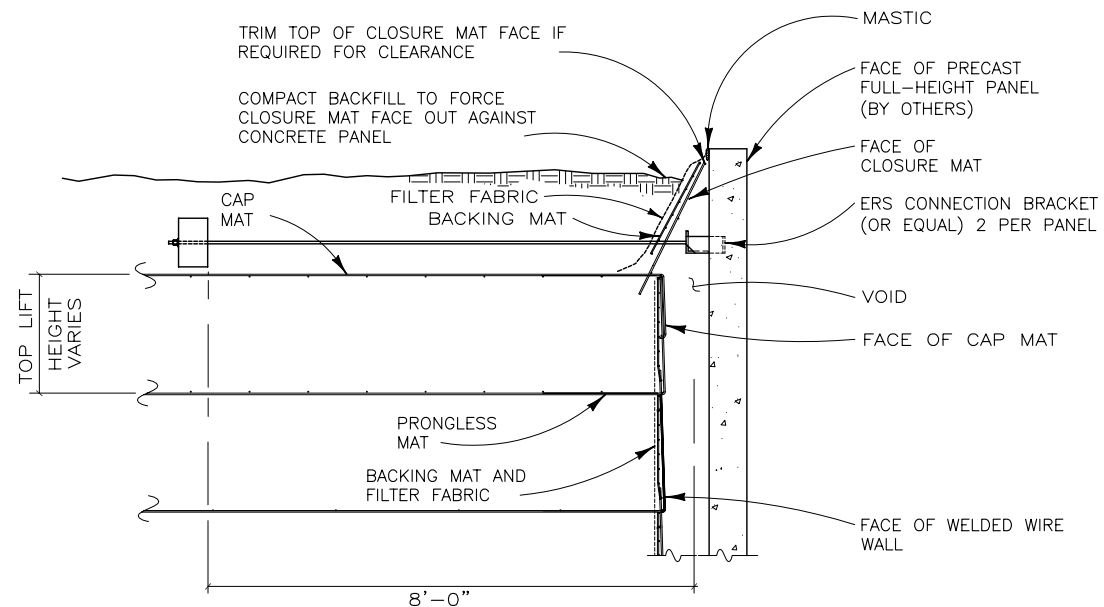
BOTTOM OF WALL DETAIL
NOT TO SCALE



WALL COMPONENTS
NOT TO SCALE



PICTORIAL ELEVATION
NOT TO SCALE



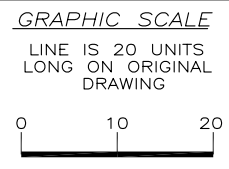
TOP OF WALL AND PANEL CONNECTION DETAILS
NOT TO SCALE

NOTE: METHOD OF ATTACHING PANELS MAY VARY FROM THIS DETAIL. SEE PROJECT PLANS FOR FURTHER DETAILS.

ERS - FULL HEIGHT - 8x21

THIS DRAWING IS FURNISHED SOLELY FOR THE USE OF OR IN CONNECTION WITH THIS PROJECT AND THE PROPRIETARY INFORMATION SHOWN HEREON IS NOT TO BE TRANSMITTED TO ANY OTHER ORGANIZATION WITHOUT SPECIFIC AUTHORIZATION BY THE HILFIKER COMPANY. HILFIKER RETAINING WALLS ARE PROTECTED BY ONE OR MORE OF THE FOLLOWING PATENTS: 243,613; 243,697; 288,616; 4,117,686; 4,329,089; 4,324,508; 4,391,557; 4,505,621; 4,343,318; 4,661,023; 4,856,939; 4,929,125; 5,076,735; 5,647,695; 5,722,799; 5,733,072; 6,357,970B1; 6,874,975B2; 7,033,118B2; AND OTHERS. OTHER PATENTS PENDING (2008)

REV. NO.	DATE	BY	DESCRIPTION
6	5/15/04	DR	REVISED CLOSURE MAT, ADDED BACKING MAT
7	15 NOV 06	AMJ	UPDATED BORDER
8	3 JUL 08	AMJ	REVISED PANEL ANCHOR & LEVELING PAD



PROJ. MGR.
ENGINEER
CADD BY
HRW

HILFIKER RETAINING WALLS

1902 Hilfiker Lane
Eureka, CA 95503-5711
TOLL FREE 800 762 8962
PH 707 443 5093 FAX 707 443 2891
WEB SITE www.hilfiker.com E MAIL info@hilfiker.com

SINCE 1902 QUALITY PRODUCTS

DWG DATE
31 AUG 00

REVISION DATE
8 JUL 08

SCALE
NOTED

STANDARD DRAWING

EUREKA REINFORCED SOIL EMBANKMENT

WITH PRECAST FULL-HEIGHT PANELS

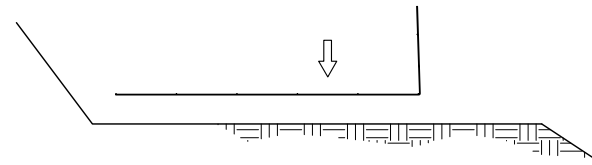
DETAILS

PROJECT NO.

SHEET
1
OF 2

STEP 1

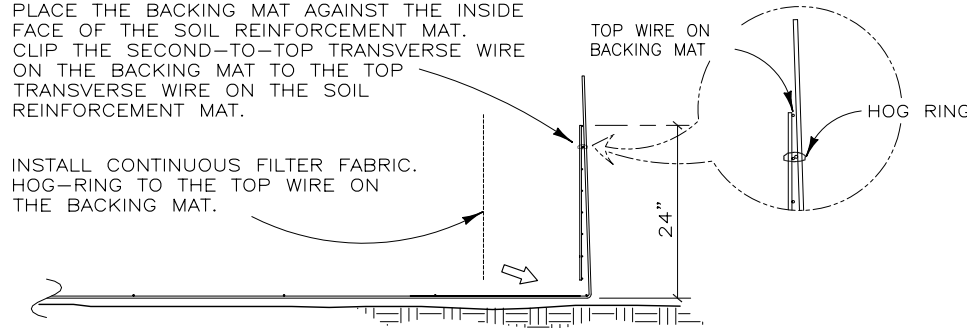
PLACE THE FIRST COURSE OF SOIL REINFORCEMENT MATS ON PREPARED FOUNDATION



STEP 2

PLACE THE BACKING MAT AGAINST THE INSIDE FACE OF THE SOIL REINFORCEMENT MAT. CLIP THE SECOND-TO-TOP TRANSVERSE WIRE ON THE BACKING MAT TO THE TOP TRANSVERSE WIRE ON THE SOIL REINFORCEMENT MAT.

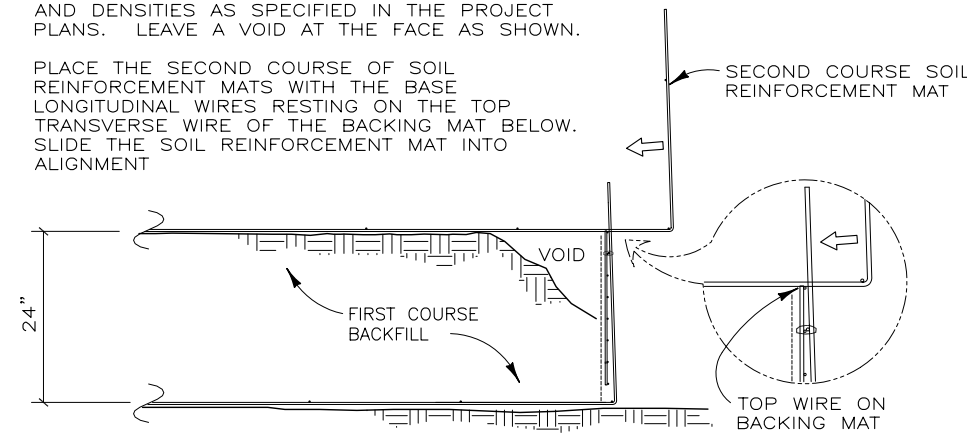
INSTALL CONTINUOUS FILTER FABRIC. HOG-RING TO THE TOP WIRE ON THE BACKING MAT.



STEP 3

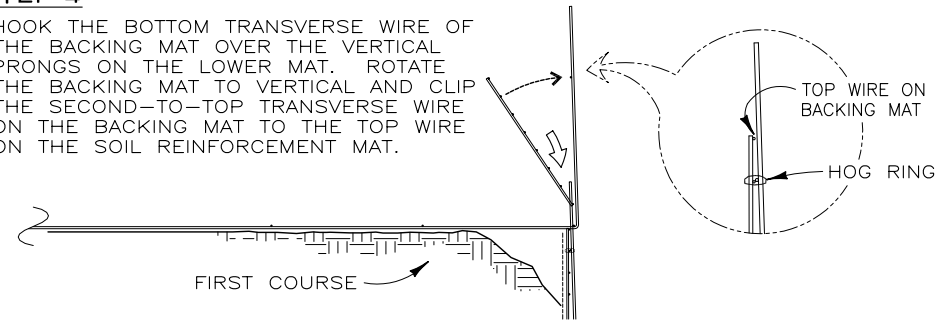
PLACE AND COMPACT THE BACKFILL IN LAYERS AND DENSITIES AS SPECIFIED IN THE PROJECT PLANS. LEAVE A VOID AT THE FACE AS SHOWN.

PLACE THE SECOND COURSE OF SOIL REINFORCEMENT MATS WITH THE BASE LONGITUDINAL WIRES RESTING ON THE TOP TRANSVERSE WIRE OF THE BACKING MAT BELOW. SLIDE THE SOIL REINFORCEMENT MAT INTO ALIGNMENT



STEP 4

HOOK THE BOTTOM TRANSVERSE WIRE OF THE BACKING MAT OVER THE VERTICAL PRONGS ON THE LOWER MAT. ROTATE THE BACKING MAT TO VERTICAL AND CLIP THE SECOND-TO-TOP TRANSVERSE WIRE ON THE BACKING MAT TO THE TOP WIRE ON THE SOIL REINFORCEMENT MAT.

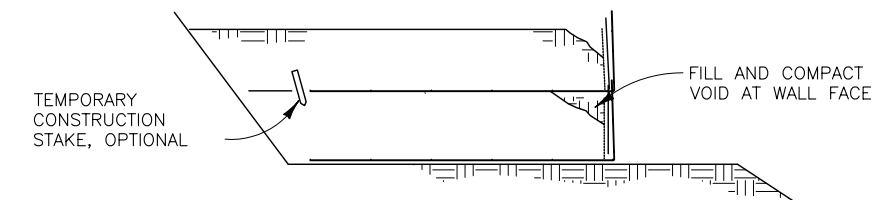


STEP 5

INSTALL FILTER FABRIC BEHIND THE BACKING MATS.

PLACE AND COMPACT THE BACKFILL TO THE BASE ELEVATION OF THE NEXT MAT.

REPEAT STEPS 3 THRU 5 TO THE TOP LIFT.

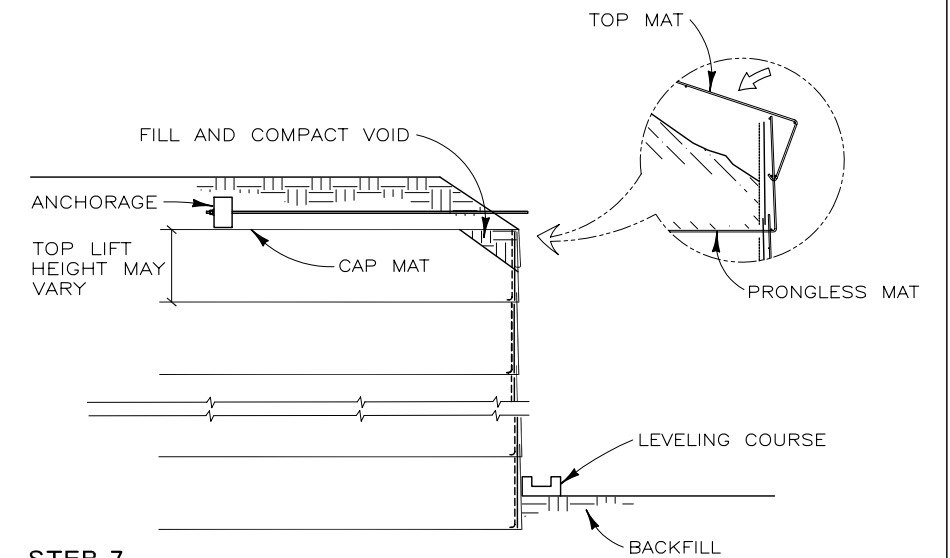
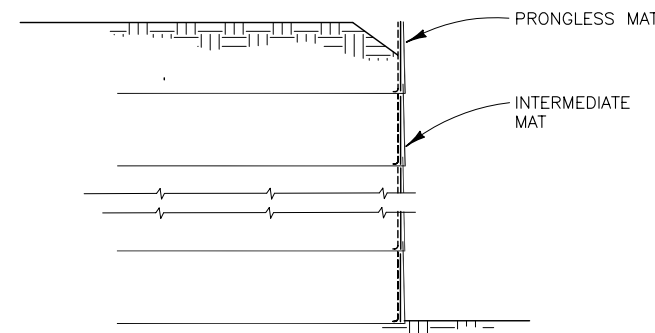


STEP 6

PLACE THE TOP LIFT PRONGLESS MAT, BACKING MAT AND FILTER FABRIC.

CUT OFF HEIGHT OF PRONGLESS MAT FACE AND FILTER FABRIC, IF REQUIRED, TO PARALLEL FINISHED GRADE.

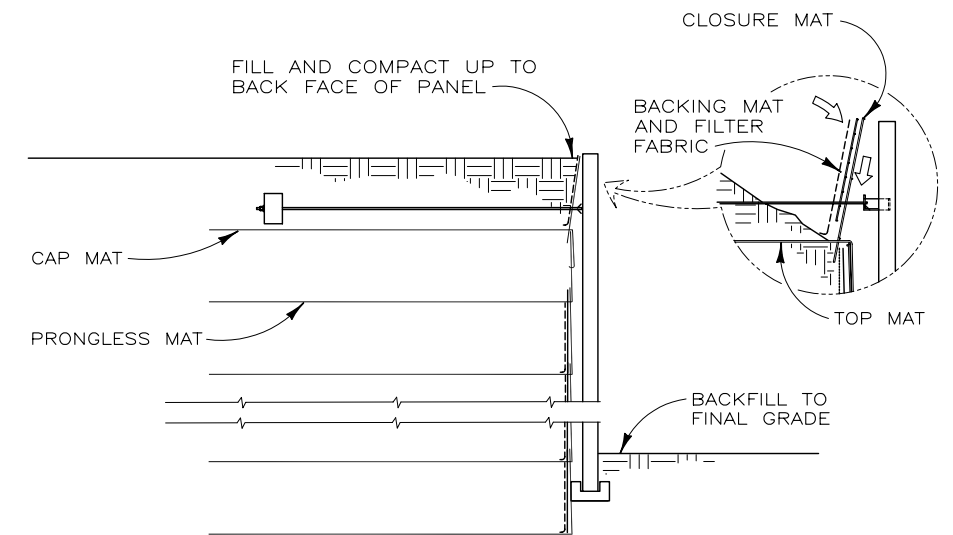
PLACE AND COMPACT THE BACKFILL IN THE PRONGLESS MAT LIFT.



STEP 7

INSTALL THE CAP MAT OVER THE COMPACTED BACKFILL. INSTALL THE PANEL ANCHORAGES TO THE SPACING SHOWN IN THE PROJECT PLANS. BACKFILL TO 1'-6" MINIMUM COVER OVER THE TOP MAT.

BACKFILL AT THE TOE TO THE ELEVATION OF THE BOTTOM OF THE LEVELING COURSE. FORM THE LEVELING COURSE WITH KEYWAY, AS SHOWN IN THE PROJECT PLANS.



STEP 8

PLACE THE BOTTOM OF THE PRECAST FULL-HEIGHT PANEL INTO THE KEYWAY ON THE LEVELING COURSE. RAISE THE PANEL TO VERTICAL AND ATTACH TO THE PANEL ANCHORAGE.

PUSH PRONGS OF THE CLOSURE MAT INTO SOIL BEHIND THE BEND IN THE TOP MAT AND ROTATE TOP OF THE CLOSURE MAT FORWARD UNTIL IT CONTACTS THE BACK OF THE PANEL. PLACE BACKING MATS AND FILTER FABRIC BEHIND CLOSURE MATS AND BACKFILL.

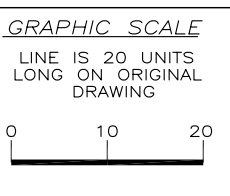
BACKFILL AT TOE TO FINAL GRADE. FINISH THE TOP OF THE WALL PER PROJECT PLANS.

ERS RETAINING WALL CONSTRUCTION SEQUENCE
NOT TO SCALE

ERS - FULL HEIGHT - 8x21

THIS DRAWING IS FURNISHED SOLELY FOR THE USE OF OR IN CONNECTION WITH THIS PROJECT AND THE PROPRIETARY INFORMATION SHOWN HEREON IS NOT TO BE TRANSMITTED TO ANY OTHER ORGANIZATION WITHOUT SPECIFIC AUTHORIZATION BY THE HILFIKER COMPANY. HILFIKER RETAINING WALLS ARE PROTECTED BY ONE OR MORE OF THE FOLLOWING PATENTS: 243,613; 243,697; 288,616; 4,117,686; 4,329,089; 4,324,508; 4,391,557; 4,505,821; 4,343,318; 4,661,023; 4,856,939; 4,929,125; 5,076,735; 5,647,695; 5,722,799; 5,733,072; 6,357,970B1; 6,874,975B2; 7,033,118B2; AND OTHERS. OTHER PATENTS PENDING (2008)

REV.NO.	DATE	BY	DESCRIPTION
6	5/15/04	DR	REVISED CLOSURE MAT, ADDED BACKING MAT
7	15 NOV 06	AMJ	UPDATED BORDER
8	3 JUL 08	AMJ	REVISED PANEL ANCHOR & LEVELING PAD



PROJ.MGR.
ENGINEER
CADD BY
HRW

HILFIKER RETAINING WALLS

1902 Hilfiker Lane
Eureka, CA 95503-5711
TOLL FREE 800 762 8962
PH 707 443 5093 FAX 707 443 2891
WEB SITE www.hilfiker.com E MAIL info@hilfiker.com

DWG DATE
31 AUG 00
REVISION DATE
8 JUL 08
SCALE
NOTED

STANDARD DRAWING
EUREKA REINFORCED SOIL EMBANKMENT
WITH PRECAST FULL-HEIGHT PANELS
CONSTRUCTION SEQUENCE

PROJECT NO.
SHEET
2
OF 2